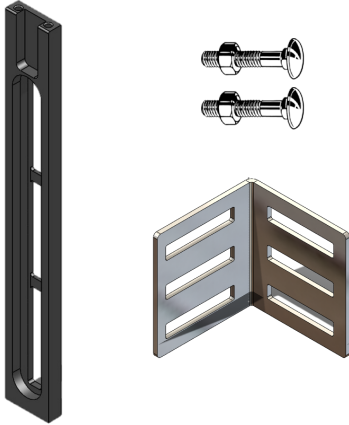


STP Extra Long Mount Bracket (Kit 56735)

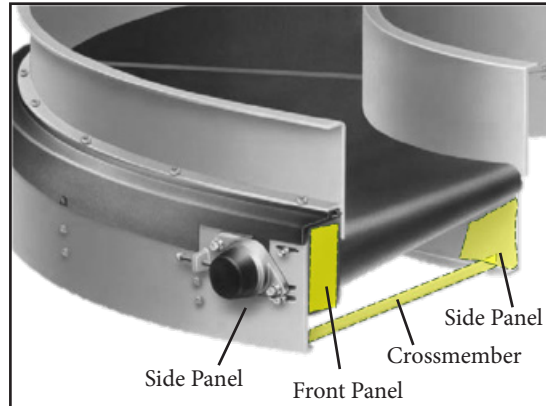
Instructions for Installation

Reference Segmented Transfer Plate IOM (X4064 & X6041) for full installation details. This sheet is only to guide the installation of the optional mounting bracket. Kit 56735 contains two extra long mounting brackets and installation hardware.

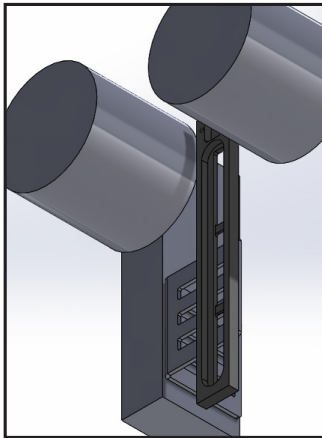
NOTE: Kit 56735 is intended for STP installation that require an extra long back plate and a 90° support “triple slot” angle bracket. Typical applications include power curves and spiral elevator conveyors where there is not sufficient conveyor structure to support the universal mount backplate. This kit does not include Item code GR538 stainless steel front plate. This item is included in your STP kit.



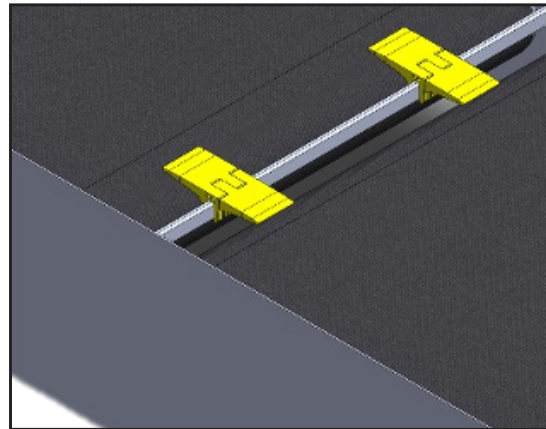
1. Assemble the back plate to the triple slot angle bracket using two carriage bolts.



2. In the particular case of spiral elevator conveyors and power curves, you can weld (per IOM X4064) or bolt the triple slot angle bracket to the lower side panel of the conveyor or the cross member under the conveyor structure. In some cases the front panel of the structure can be used.



3. In this example we have selected the lower side panel as the anchor point for the triple slot bracket. When you install the bracket assembly, verify the back plate clears both rollers and there is at least 1/4” (6mm) of clearance between the back plate and moving parts.



4. Install the transfer plate and follow steps 1 to 14 of IOM X4064. Once STP has been adjusted to proper height, tighten the remaining carriage fasteners until the washers are compressed, plus ¼ to ½ a turn.



2525 Wisconsin Avenue • Downers Grove, IL 60515-4200 • USA
Tel: (630) 971-0150 • Fax: (630) 971-1180 • E-mail: info@flexco.com

Visit www.flexco.com for other Flexco locations and products.

©2021 Flexible Steel Lacing Company. 01/11/21. For Reorder: X6446

