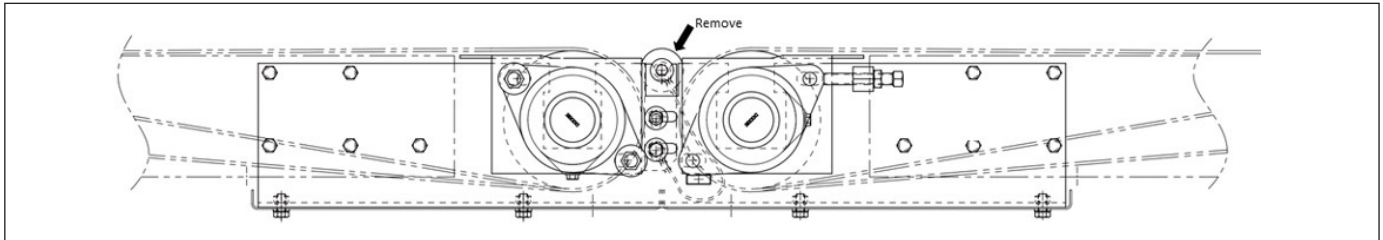


STP Dual Slot Mount Bracket (Kit 56734)

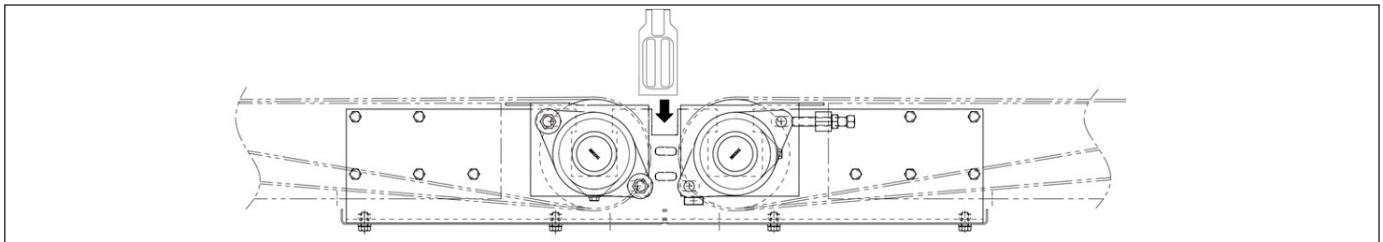
Instructions for Installation

1. Reference Segmented Transfer Plate IOM (X4064 & 6041) for full installation details. This sheet is only to guide the installation of the optional mounting bracket. Kit 56734 contains two dual slot mount brackets and installation hardware.

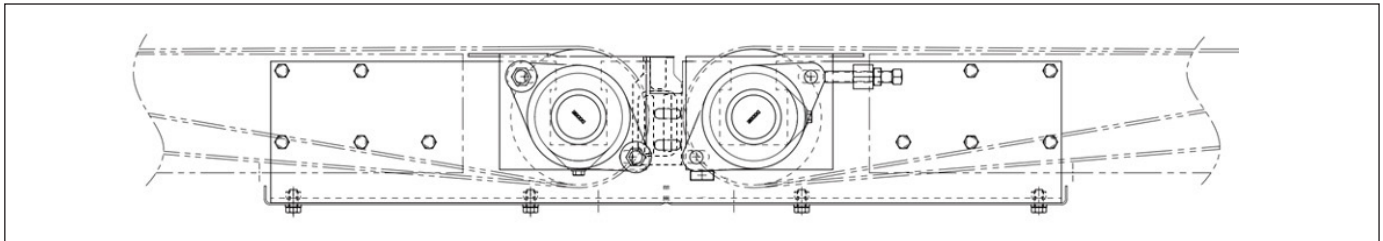
NOTE: Kit 56734 is intended for STP installation that require a dual slot backplate. This kit is for Double end Pulley applications where a pop up roler is being replaced with a FLEXCO Segmented Transfer Plate.



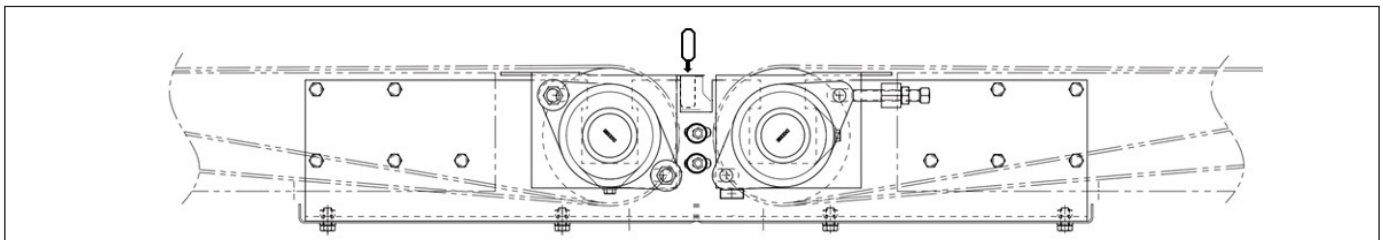
2. Remove the pop up roller and all its supporting structure including the safety cable.



3. Insert the backplate between the pulleys and align the vertical slots with the horizontal conveyor slots. Make sure you have complete overlap between slots. You will need enough overlap to install a minimum of two fasteners. The plate must be aligned towards the feeding conveyor.



4. Secure the backplate using the provided hardware.



5. Install the transfer plate and follow steps 1 to 14 of IOM X4064. Once STP has been adjusted to proper height; tighten the fasteners until the washers are compressed and plus $\frac{1}{4}$ to $\frac{1}{2}$ a turn.



2525 Wisconsin Avenue • Downers Grove, IL 60515-4200 • USA
Tel: (630) 971-0150 • Fax: (630) 971-1180 • E-mail: info@flexco.com

Visit www.flexco.com for other Flexco locations and products.

©2020 Flexible Steel Lacing Company. 09-25-20. For Reorder: X6306

