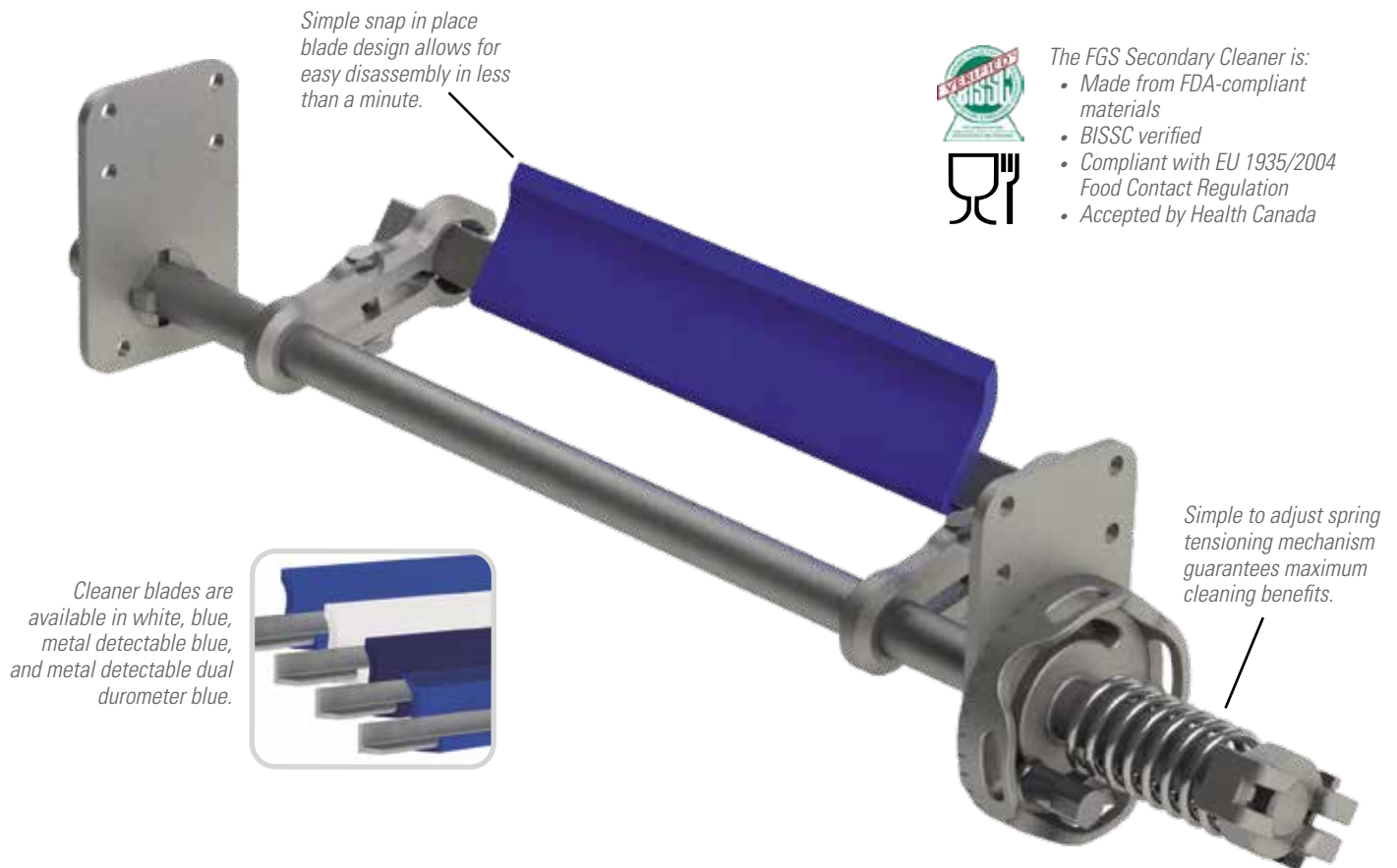


# FGS Food Grade Secondary Cleaner

## BISSC Verified Secondary Cleaner Meets Highest Standards for Food Processing Applications

The easy-to-install FGS Food Grade Secondary Cleaner from Flexco features solid, stainless steel components that makes it easy to maintain. Regular cleaning and sanitation is also a snap with quick and easy disassembly, meaning operations can be up and running in no time. The FGS Cleaner works on any belt from 12" to 72" (305 mm to 1828 mm) with a blade made from FDA-compliant food grade material, and is available in white, blue, metal detectable blue, and metal detectable dual durometer blue.



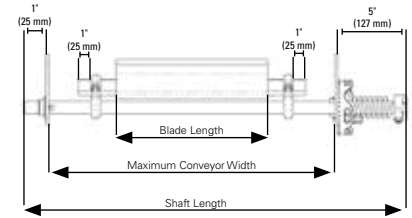
### Features and Benefits:

- **Comes with complete hardware set**, including side plates and standoffs, so installation, tensioning, and service is easy.
- **Simple design with small footprint**, featuring solid, stainless steel components and food-grade materials that can be installed in any area and easily cleaned.
- **Easy to operate, adjust, and tension** to minimize blade wear, eliminate belt damage, and maximize blade cleaning efficiency.
- A **secondary cleaner with built in flexibility** to operate with the blade trailing or leading at a variety of blade-to-belt contact angles.
- **Choice of UHMW blades** in white, blue, metal detectable blue, and for uneven or soft cover belts, blue metal detectable dual durometer<sup>3</sup>.
- **Available in standard blade widths** for belts from 12" to 72" (305 mm to 1828 mm), but special orders are available. Blades, bar, and shaft can also be cut down to appropriate length.
- **Compatible** with endless and mechanical splices. Suitable for use on modular and monolithic belting when using a belt hold down device<sup>2</sup>.

# FGS Food Grade Secondary Cleaner

## Specifications:

- **Temperature Range**  
UHMW:  
-20°F to 140°F  
(-29°C to 60°C)  
Dual Durometer:  
+32°F to 140°F  
(0°C to 60°C)
- **Blade Height**  
UHMW:  
2.0" (50 mm)  
Dual Durometer:  
3.0" (76 mm)
- **Blade Length Range**  
12" to 72"  
(305 mm to 1828 mm)
- **Cleaner Construction Material**  
Solid 304 Stainless Steel
- **Blade Hardness**  
UHMW:  
63D Shore Hardness  
Urethane:  
85A Shore Hardness
- **Blade Material**  
Food-grade UHMW, UHMW  
with Stainless Steel, or  
Urethane with PVC



## How to choose the correct size FGS cleaner for your conveyor.

1. Measure your belt width.
2. Choose the Blade Length that corresponds to your belt width.
3. Measure your conveyor outside to outside width.
4. Verify the Maximum Conveyor Width shown in the selection chart is larger than your outside to outside conveyor width. If your conveyor width is larger than the maximum width shown, choose the next larger Blade Length that accommodates your conveyor width.
5. Blade, support bar, and shaft can be cut to users required length. Shaft must be 6" (150 mm) longer than the outside width of conveyor structure at the mounting location. For cleaners that are 54" (1372 mm), shaft must be 12" (305 mm) longer than the outside width of the conveyor structure at the mounting location.

Blade Lengths					
Blade Length		Support Bar Length		Maximum Conveyor Width	
in.	mm	in.	mm	in.	mm
12	305	15	381	20	508
18	457	21	533	26	660
24	610	27	686	32	813
30	762	33	838	38	965
36	914	39	991	44	1118
42	1067	45	1143	50	1270
48	1219	51	1295	56	1422
54	1372	57	1448	64	1626
60	1524	63	1600	70	1778
66 <sup>1,4</sup>	1676	69	1753	76	1930
72 <sup>1,4</sup>	1828	75	1905	82	2083

FGS Food Grade Secondary Cleaner											
Blade Length		Maximum Conveyor Width		White Blade		Blue Blade		Blue Metal Detectable Blade		Blue Dual Durometer Blade <sup>2</sup>	
in.	mm	in.	mm	Ordering Number	Item Code	Ordering Number	Item Code	Ordering Number	Item Code	Ordering Number	Item Code
12	305	20	508	FGS-W2-12	57020	FGS-BL2-12	57000	FGS-MD2-12	57040	FGS-MDDD3-12	57060
18	457	26	660	FGS-W2-18	57021	FGS-BL2-18	57001	FGS-MD2-18	57041	FGS-MDDD3-18	57061
24	610	32	813	FGS-W2-24	57022	FGS-BL2-24	57002	FGS-MD2-24	57042	FGS-MDDD3-24	57062
30	762	38	965	FGS-W2-30	57023	FGS-BL2-30	57003	FGS-MD2-30	57043	FGS-MDDD3-30	57063
36	914	44	1118	FGS-W2-36	57024	FGS-BL2-36	57004	FGS-MD2-36	57044	FGS-MDDD3-36	57064
42	1067	50	1270	FGS-W2-42	57025	FGS-BL2-42	57005	FGS-MD2-42	57045	FGS-MDDD3-42	57065
48	1219	56	1422	FGS-W2-48	57026	FGS-BL2-48	57006	FGS-MD2-48	57046	FGS-MDDD3-48	57066
54	1372	64	1626	FGS-W2-54	57027	FGS-BL2-54	57007	FGS-MD2-54	57047	FGS-MDDD3-54	57067
60	1524	70	1778	FGS-W2-60	57028	FGS-BL2-60	57008	FGS-MD2-60	57048	FGS-MDDD3-60	57068
66 <sup>1,4</sup>	1676	76	1930	FGS-W2-66	57029	FGS-BL2-66	57009	FGS-MD2-66	57049	FGS-MDDD3-66	57069
72 <sup>1,4</sup>	1828	82	2083	FGS-W2-72	57030	FGS-BL2-72	57010	FGS-MD2-72	57050	FGS-MDDD3-72	57070

<sup>1</sup>Requires FLEXCO application support and coordination. Please contact Flexco Customer Service or your local Territory Manager. Applications over 54" require dual tensioners and additional blade support. Every application is different; please seek application approval.

<sup>2</sup>Provide backup rollers on monolithic belts, using a belt hold down device.

<sup>3</sup>PVC is not metal detectable; blue poly urethane tip is metal detectable.

<sup>4</sup>Shaft must be 12" (305 mm) longer than the outside width of conveyor structure.

Authorized Distributor:



2525 Wisconsin Avenue • Downers Grove, IL 60515-4200 • USA  
Tel: (800) 541-8028 • Fax: (630) 971-1180 • E-mail: info@flexco.com

Visit [www.flexco.com](http://www.flexco.com) for other Flexco locations and products.

