

## Maximising Belt Conveyor Productivity

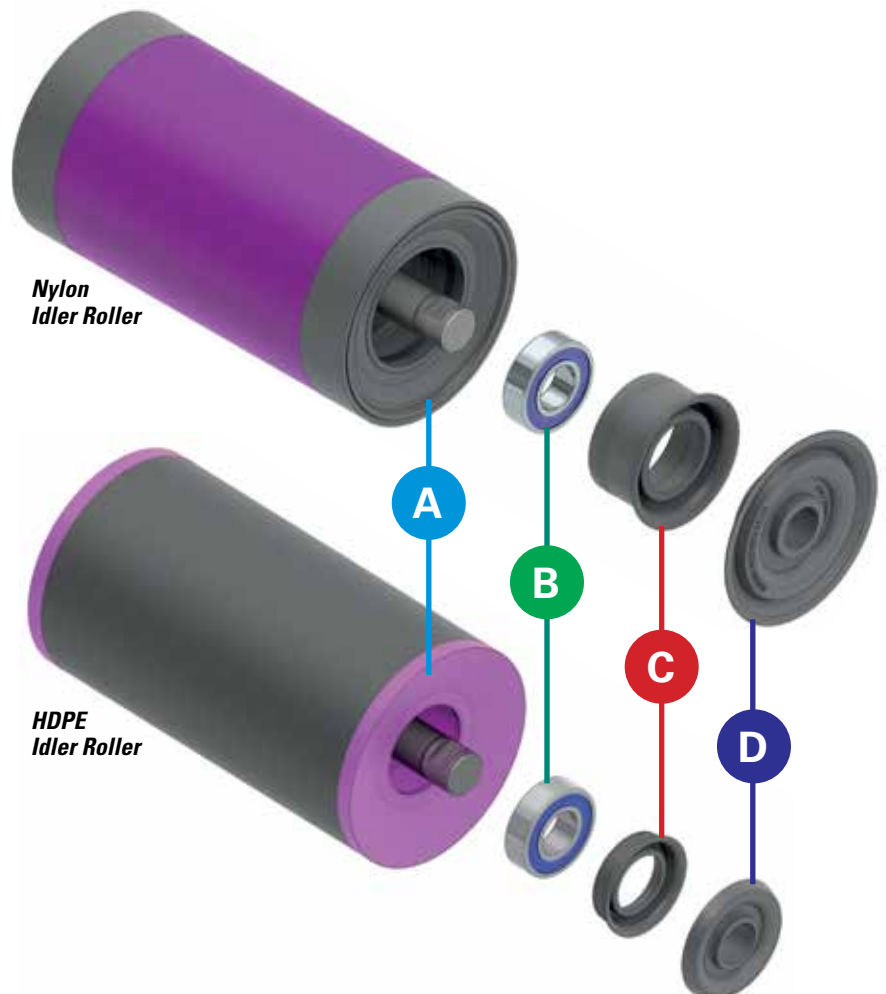
Flexco CCT Idler Rollers are lightweight, high strength, corrosion and abrasion resistant. They are highly effective workhorses for the dirtiest, most abrasive environments and are suitable for the majority of corrosive applications.

### Features and Benefits:

- Light construction ensures low idler rotating mass values and allows for safe and easy handling.
- Advanced polymer material blend allows renegade material to be shed from the roll making it virtually self-cleaning.
- Load support rating is similar to the equivalent of steel rollers.
- Polymer shell construction offers improved impact resistance compared to steel rollers, leading to prolonged roller service life.
- Impact resistance properties of the roller improve belt life.
- Inherent strength of the engineered polymer shell construction does not require steel tube reinforcement.
- CCT idler rolls are 100% recyclable.

### Field-Proven Seal Design

- A Bearing Housing**  
The bearing housing is welded to the roll so that no moisture or dust enters the roll at the joint.
- B Deep Groove Ball Bearing**  
Bearings installed in the CCT rolls are sealed for life. They exceed industry standards and the roller design protects the bearings from premature failure.
- C Flinger Seal**  
The flinger rotates along with the roller creating a vortex to expel moisture and dirt that may have passed the rock shield away from the roll.
- D Rock Shield**  
The rock shield is pressed onto the shaft and is stationary during operation. It protects the flinger underneath and limits the number of rotating components making it safer for maintenance personnel.



## Nylon & HDPE Idler Rollers

### The Flexco Advantage

The next generation of troughing and return rolls are made of lightweight, high strength, corrosion and abrasion resistant polymer material.

Polymer Shell construction means that even advanced wear on the shell won't damage the belt.

### The CCT Roller Range

The table below represents available belt widths for CCT rollers.

In addition to the standard sizes listed in the table, Flexco also supplies a range of custom roll sizes, impact idlers and anti-rollback idlers. Please contact your local Flexco distributor to discuss the solution we are able to provide for your unique application.

### Performance

#### Reduced Idler Rotating Mass

Lightweight shell construction considerably reduces the rotating idler mass on a conveyor installation.

#### Breakaway Mass

The bearing sealing arrangement and housing construction results in reduced breakaway mass values.

#### Noise Reduction

50% reduction compared to steel rollers.

### Construction

#### Lightweight

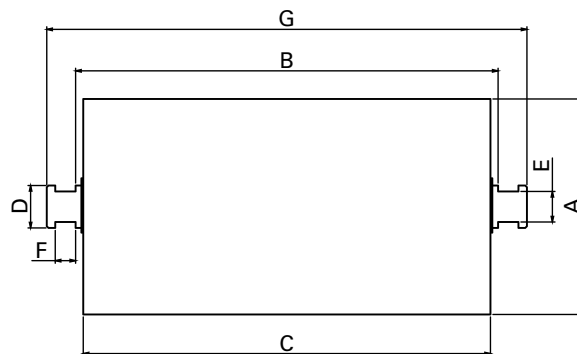
Ultra lightweight construction makes CCT rolls far lighter compared to steel rolls reducing the risk of injuries during handling and installation.

#### SANS 1313

CCT rollers are manufactured generally to envelope sizes noted in the South African National Standard.

#### Belt Friendly

CCT rolls are gentle enough to avoid damage to the belt in the unlikely event of seizure or failure.



#### Key Dimensions

- A Shell Diameter
- B Gauge Length
- C Face Length
- D Shaft Diameter
- E Across Flats
- F Flats Length
- G Shaft Length

#### Standard Gauge Lengths

Shell Ø	Shaft Ø	Type	Belt Width (mm)								
			600	750	900	1050	1200	1350	1500	1650	1800
127	25	3 Roll	250	300	350	400	460	510	570	620	670
		5 Roll	—	—	—	250	280	310	350	380	410
		V Return	310	410	485	570	645	730	810	895	975
		Flat Return	698	850	1004	1156	—	—	—	—	—
152	25	3 Roll	250	300	350	400	460	510	570	620	670
		5 Roll	—	—	—	250	280	310	350	380	410
		V Return	310	410	485	570	645	730	810	895	975
		Flat Return	698	850	1004	1156	—	—	—	—	—
152	30	3 Roll	250	300	350	400	460	510	570	620	670
		5 Roll	—	—	—	250	280	310	350	380	410
		V Return	310	410	485	570	645	730	810	895	975
		Flat Return	698	850	1004	1156	—	—	—	—	—

#### Envelope Sizes

Shell Ø	Shaft Ø	Gauge	Across Flats	Flats Length	Shaft Length	Face
127	25	250-1156	18	12	Gauge +34	Gauge -10
127	30	250-1156	22	14	Gauge +38	Gauge -10
152	30	250-1156	22	14	Gauge +38	Gauge -10

236 Albert Amon Rd • Meadowdale Ext. 7 • Germiston 1614 • South Africa  
Tel: +27-11-608-4180 • Fax: +27-11-454-5821 • E-mail: flexco\_sa@flexco.com

Visit [www.flexco.com](http://www.flexco.com) for other Flexco locations and products.

©2019 Flexible Steel Lacing Company. 11-12-19. For Reorder: X6072

