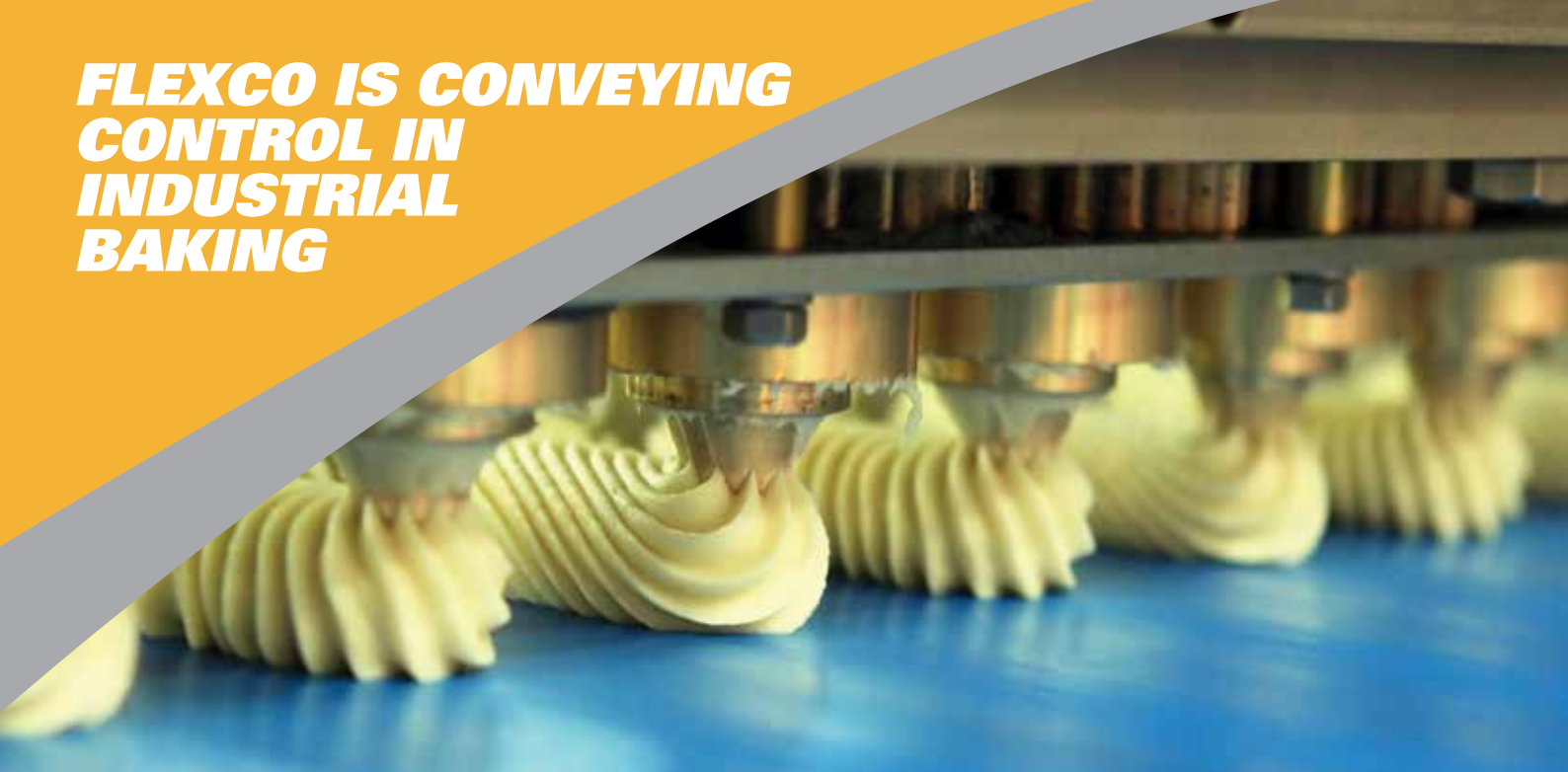




Your partner in  
**INDUSTRIAL  
BAKING**

**FLEXCO**

# FLEXCO IS CONVEYING CONTROL IN INDUSTRIAL BAKING



## MEET FLEXCO

For over 110 years, Flexco has focused on creating belt conveyor solutions that meet ever-changing customer needs. Flexco is committed to applying superior knowledge and equipment to make belt conveyor operations in the baking industry as productive as possible. With products that keep belt conveyors running smoothly while requiring less maintenance, Flexco helps industrial bakers do more with fewer people to meet production and food safety goals. As a global company, Flexco has representation in over 150 countries, with local inventory and personnel dedicated to assisting baking facilities around the world.

## A PARTNER IN THE BAKING INDUSTRY

Over the years, we've worked closely with our clients to cultivate deep relationships and gain industry expertise, earning a reputation as a trusted partner in belt conveyor efficiency. We're committed to understanding the nuances of everyday bakery challenges and to providing a comprehensive line of belt conveyor products to reduce downtime costs. We understand increased interest in organic goods, demands for allergen-free products, and government sanitation standards affect production — we are here to be your partner in productivity to help maximize efficiency.

## CHALLENGES IN THE BAKING PRODUCTION PROCESS

Unscheduled downtime can cost more than \$50,000 per hour, and facilities need to comply with stringent sanitary and safety regulations. Flexco has solutions to help you with these challenges that include:



Reduced Downtime



Sanitary Splicing



Carryback Elimination



Worker and Food Safety

## TRENDS IN THE BAKING INDUSTRY



**4.5%**  
ANNUALLY

### GLOBAL BAKING

Bread and bakery products are forecasted to grow 4.5% globally from 2016-2021.



### DOWNTIME IS COSTLY

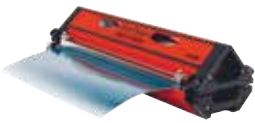
Downtime cost per hour can be as high as \$50,000.



### EU EXPANSION

Retail sales of bakery products in the EU is expected to grow from \$127 billion in 2017 to \$151 billion in 2021.

# BELT CONVEYOR SOLUTIONS YOU CAN COUNT ON



## NOVITool® AERO® SPLICE PRESS

The Novitool® Aero® Splice Press is the best and fastest endless splicing press available, capable of completing a splice from preheat to cooldown in as few as 10 minutes. With a unique platen design creating flat splices and a consistent heating profile, the splice is free from pinholes at the fingertips, creating a sanitary splice.



## NOVITool® PUN M™ MOBILE FINGER PUNCH

The Novitool® Pun M™ Mobile Finger Punch can be used at the conveyor site and does not require electrical power, accelerating splice preparation to save downtime. Its precision finger cutting boards ensure fingers are cut perfectly each time. No hammers or punches are required, adding an extra element of safety.



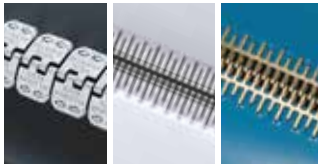
## NOVITool® AMIGO™ SPLICE PRESS

Use the Novitool® Amigo™ Splice Press on monolithic belts for a consistent butt splice with no air bubbles or imperfections. It completes most splices in less than 15 minutes. Plus, it's touch-free and has a fully enclosed heating element to make it a safer option than the hot wand method of monolithic belt splicing.



## FGP FOOD GRADE PRECLEANER

The FGP removes carryback from the conveyor belt to reduce tracking issues and extend splice life, as well as to reduce wear on conveyor components and increase the life of the belt. Blade options include UHMW food-grade blue or white, metal detectable blue, and dual durometer metal detectable blue. The stainless steel FGP is made from FDA approved materials and is USDA certified, providing a sanitary belt cleaning solution.



## MECHANICAL BELT FASTENING SYSTEMS

Alligator® Staple, Anker® Wire Hooks, and Anker® G-Series™ all offer fast installation that is useful when having to splice conveyor belting during a critical breakdown. Offered in 316 Stainless Steel, these mechanical fasteners are not affected by the fats and oils present in industrial baking, making them ideal as both emergency repair and permanent splicing solutions.



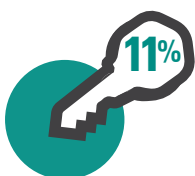
## LASER BELT SQUARE

The Flexco Laser Belt Square can be used to quickly produce an accurate line for marking and cutting. Splicing a belt that is not properly squared can lead to belt tracking issues and potential downtime.

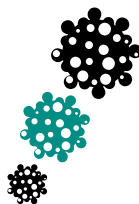


## 845LD BELT CUTTER

The 845LD Belt Cutter provides a fast and accurate cut in a single pass, utilizing a fully enclosed blade during cutting operations for a safe cut. A straight cut helps ensure the belt will track straight. Its bi-directional blade design and dual-drive shafts allow the operator to cut the belt while working from either end of the belt cutter.



**KEY INGREDIENTS**  
Bread and bakery products accounted for **11% of worldwide food revenue in 2016.**



**INCREASED ALLERGEN FOCUS**  
Global growth of products listed as low-, no-, or reduced-allergens **grew by 5.4% from 2010-2015.**



**GROWTH IN CHINA**  
Bread and bakery products are expected to **grow 11.1% annually.**



**FLEXCO**

**CONVEYING  
EDUCATION**



## **FLEXCO UNIVERSITY**

To help our clients achieve optimal belt conveyor productivity, we go beyond simply supplying the right products. We provide extensive support and training on how to use them. Through Flexco University, your team will have access to online, on-site, and in-class learning opportunities.

### **FLEXCO UNIVERSITY ONLINE**

Flexco University Online provides professional training on mechanical belt fastening, belt conveyor products, belt maintenance, and transfer point solutions. Courses are available at [www.flexcouniversity.com](http://www.flexcouniversity.com) and can be accessed any time at your convenience, day or night. Three levels of courses are available, with each course lasting 30 to 60 minutes.



### **FLEXCO UNIVERSITY ON-SITE AND IN-CLASS TRAINING PROGRAMS**

Flexco representatives are available to come to your location for on-site training and education. Training programs can be customized based on schedules and employee knowledge.

For a focused learning experience, Flexco offers in-class education at training facilities around the globe. Flexco provides comprehensive, multi-day sessions that include technical training, application insights, and problem-solving techniques led by experienced Flexco personnel.

**Contact your local Flexco representative or distributor.**

**To find a representative or distributor in your area, visit [Flexco.com](http://Flexco.com).**

**FLEXCO**

*Partners in Productivity*

New Door No. 51 • Anna Salai, Nagalkeni • Pammal Village • Chennai - 600 044 • Tamil Nadu • India

Tel: +91-44-4856-6762 • E-mail: [info.india@flexco.com](mailto:info.india@flexco.com)

©2019 Flexible Steel Lacing Company. 04/03/19. For Reorder: X5848