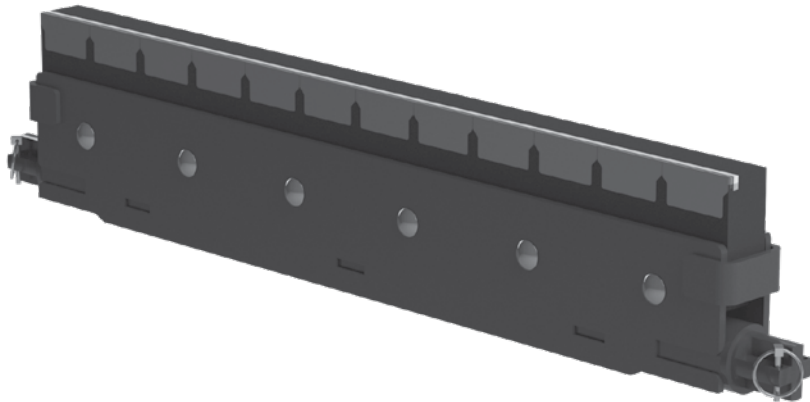


# Flexco Retrofit Replacement Blades for Richwood® 1C-ITC Cleaner

---

## Installation Instructions

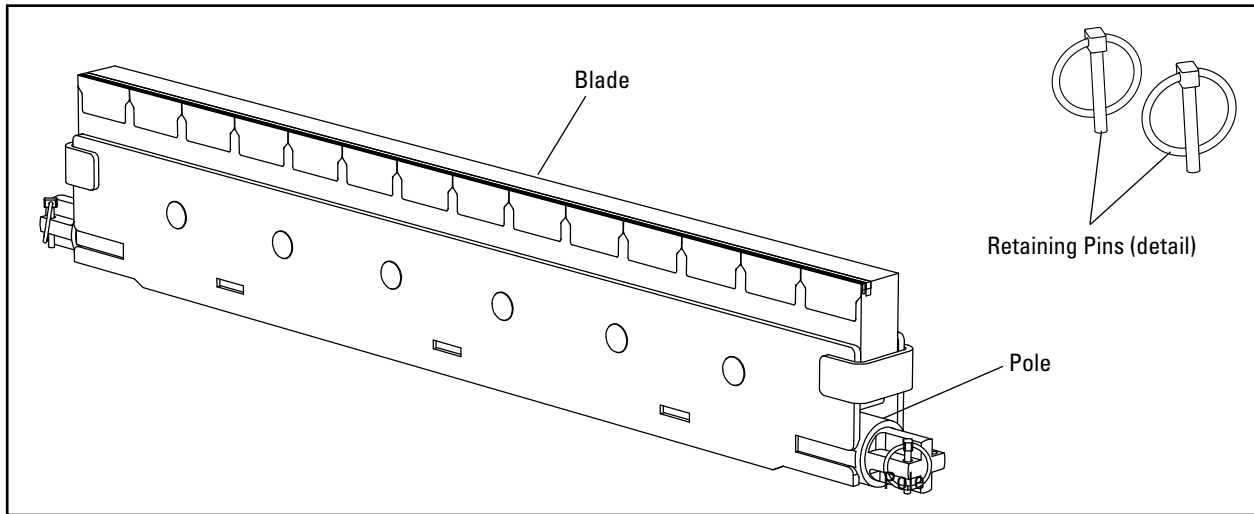
---



Richwood® is a registered trademark of Richwood Industries, Inc.  
The replacement parts described herein are designed and made by Flexco.  
Flexco is not affiliated with or authorized by Richwood.

# Installation Instructions

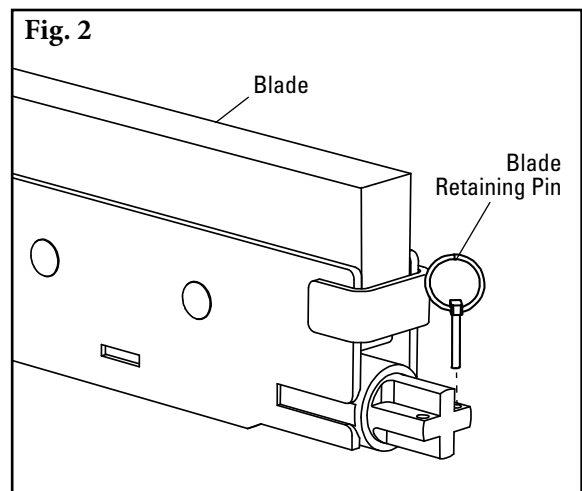
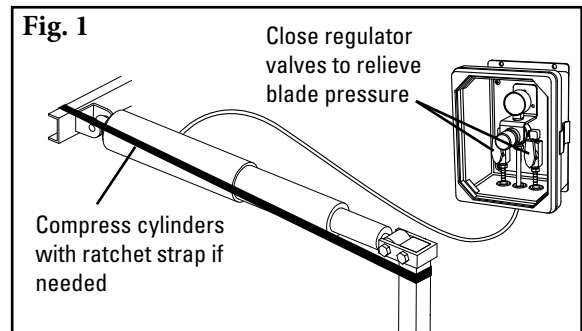
## Flexco Retrofit Blades for 1C-ITC



**Physically lock out and tag the conveyor at the power source before you begin cleaner installation.**

**Tools Needed:**  
Wire Brush Pliers

1. After locking out and tagging out the conveyor, **record the current pressure/PSI setting—this will be needed after new blade is installed.** Then close regulator valves to relieve blade pressure and drop cleaner away from belt. A ratchet strap may be needed to compress the cylinders to fully remove the air pressure, which should back the cleaner down from the belt.
2. **NOTE: These blades can be extremely heavy, so use caution when removing.** Remove blade by first removing the blade retaining pin, crossholder retaining pin, and crossholder from each side (DO NOT DISCARD) (Fig. 2). At this point, there may be enough slack to slide out the blade. If not, continue by removing one crossholder arm, noting that in some cases you may have to knock the crossholder off the knuckles (DO NOT DISCARD). Once the blade and both crossholders are out of the knuckles on both sides, clean off the crossholders and entire knuckle.



# Installation Instructions

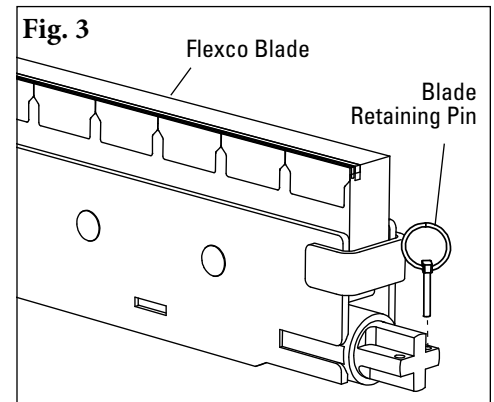
## Flexco Retrofit Blades for 1C-ITC

3. Slide crossholder arms and crossholders onto ends of Flexco blade holder, ensuring crossholders are between the knuckles, and lock in place with blade retaining pins (Fig. 3). Replace crossholder retaining pins and locking rings.
4. Remove the ratchet strap and slowly scale up air pressure to move the blade close enough to the belt to set attack angle. Loosen set screws and rotate blade until it is perpendicular to the belt. Lock in one set screw.
5. Re-tension blade to belt. Use the PSI recorded in step 1 to calculate the new recommended air pressure using the formula below:

$$\text{New PSI} = \text{Recorded PSI} \times \text{New Blade Width} \div \text{Old Blade Width}$$

New PSI: \_\_\_\_\_

Open the regulator valves back up and set blade to new PSI.



### Pre-Op Checklist:

- Recheck that all fasteners are tightened properly.
- Check the blade location on the belt.
- Be sure that all installation materials and tools have been removed from the belt and the conveyor area.

### Test Run the Conveyor:

- Run the conveyor for at least 15 minutes and inspect the cleaning performance.
- Make adjustments as necessary.

**NOTE:** Observing the cleaner when it is running and performing properly will help detect problems or needed adjustments later.

Richwood® is a registered trademark of Richwood Industries, Inc.  
The replacement parts described herein are designed and made by Flexco.  
Flexco is not affiliated with or authorized by Richwood.



2525 Wisconsin Avenue • Downers Grove, IL 60515-4200 • USA  
Tel: (630) 971-0150 • Fax: (630) 971-1180 • E-mail: [info@flexco.com](mailto:info@flexco.com)

Visit [www.flexco.com](http://www.flexco.com) for other Flexco locations and products.

©2021 Flexible Steel Lacing Company. 04/05/21. For reorder: X5770

