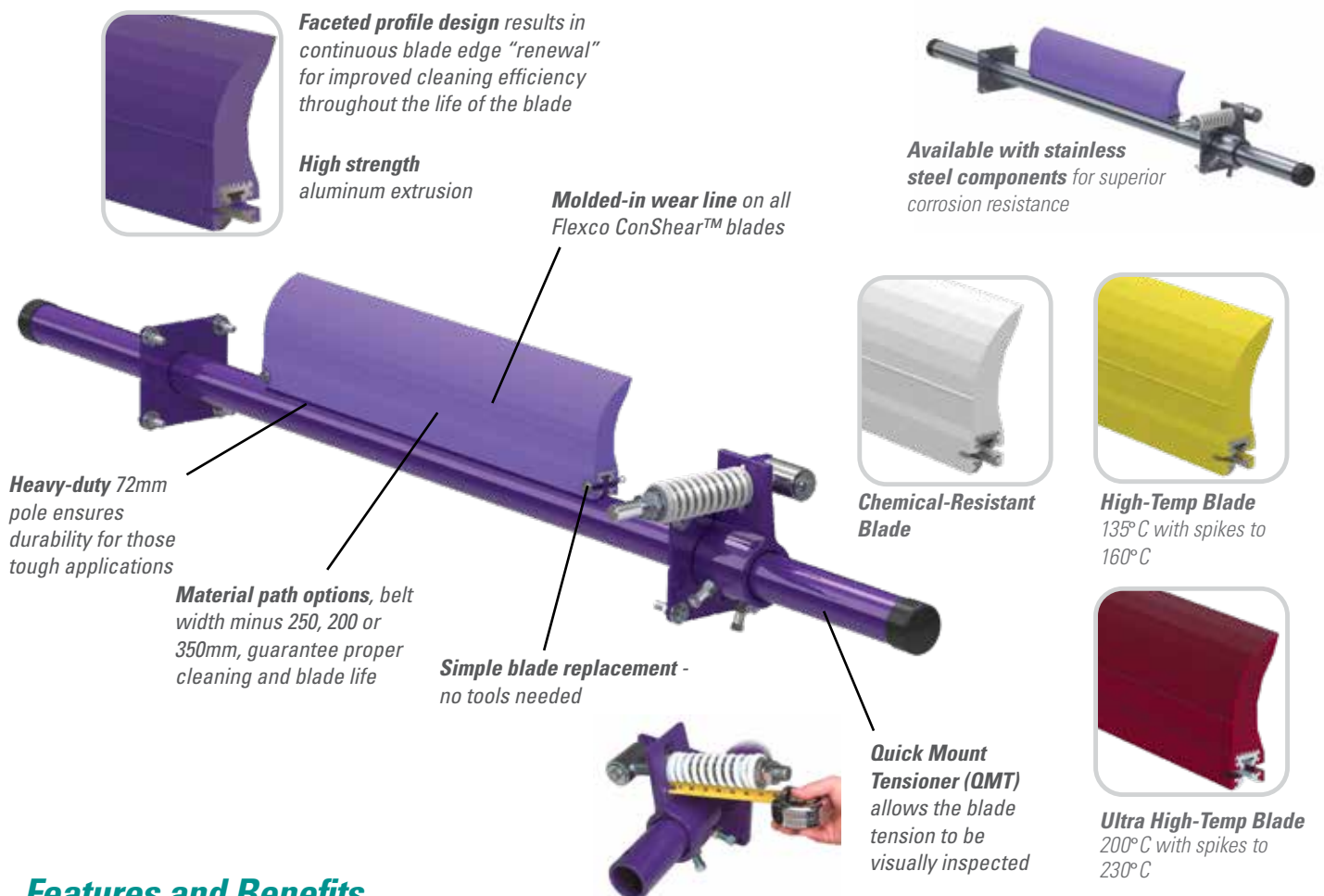


# MSP Standard Mine-Duty Precleaner

## Economical and Effective Choice for Wood Handling

The MSP Standard-Duty Precleaner is a tough design that combines simple, do-it-yourself installation, quick maintenance and effective cleaning results with an affordable price tag. Install the MSP on belts carrying chips where dust is widespread to facilitate the capture of usable material and avoid material piles that create fire hazards. Stainless Steel components and Chemical-Resistant, High-Temp, or Ultra-High Temp blade options are available for belts carrying chips to the digester and lime to the kiln.



### Features and Benefits

- **Quick-change blade.** No tools are needed. Just pull one pin, remove the old blade, slide in the new one and replace the pin.
- **Works with Flexco and other mechanical splices.** The spring tensioner quickly moves the blade away from the belt when a splice passes. The polyurethane blade easily glides over the splice without damage and with minimal cleaning disruption.
- **Easy to service.** All maintenance work is done from the easy-access side of the beltline. Blade retensioning and change-out are quick and easy.
- **Fits most conveyor structures.** Available for belt widths from 600 to 2100mm. The MSP poles are extra long (belt width plus 1350 mm) to accommodate varying structure widths.

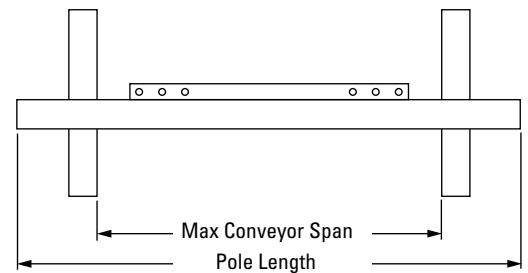
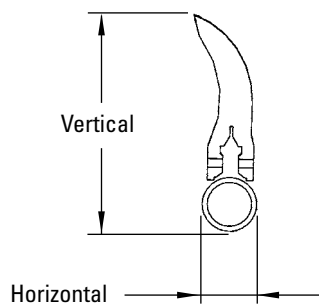
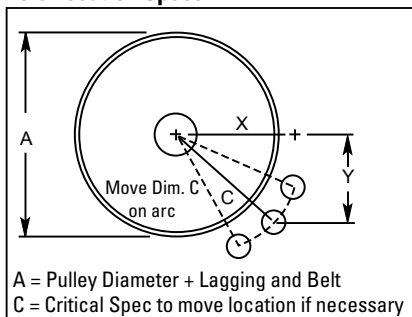
# MSP

## Standard Mine-Duty Precleaner

### Specifications and Guidelines

- Maximum Belt Speed**  
3.5 M/sec
- Temperature Rating**  
**Purple/White:** -35°C to 82°C  
**Yellow:** -35°C to 135°C  
Spikes to 160°C  
**Red:** -35°C to 200°C  
Spikes to 230°C
- Minimum Pulley Diameter**  
400mm
- Blade Height**  
185mm
- Usable Blade Wear Length**  
100mm
- Blade Material**  
**Purple/White:** Polyurethane 83 durometer  
**Yellow:** Polyurethane 93 durometer  
**Red:** Ultra High-Temp Polyurethane 90 durometer
- Available for Belt Widths**  
600 to 2100mm
- CEMA Cleaner Rating**  
Class 3
- Horizontal Clearance Required**  
100mm
- Vertical Clearance Required**  
254mm
- Pole Length**  
Cleaner size + 1350mm
- Maximum Conveyor Span**  
Cleaner size + 1100mm

#### Pole Location Specs



#### Pole Location Chart

A	X	Y	C	A	X	Y	C	A	X	Y	C
400	204	305	367	625	314	230	390	850	446	230	501
425	218	305	375	650	330	230	402	875	460	230	514
450	231	305	383	675	346	230	415	900	474	230	526
475	244	305	390	700	360	230	427	925	488	230	539
500	259	305	400	725	374	230	439	950	502	230	552
525	274	305	410	775	389	230	452	975	516	230	565
550	288	305	419	775	403	230	464	1000	529	230	576
575	300	305	428	825	417	230	477	1025	542	230	589
600	315	305	438	825	432	230	489	1050	557	230	602

#### Ordering Information

MSP Standard-Duty Precleaner  
Belt Width Minus 2"

Belt Width	Blade Width	Ordering	Item
mm	in.	Number	Code
600	24	MSP-224	75787
750	30	MSP-230	75788
900	36	MSP-236	75789
1050	42	MSP-242	75790
1200	48	MSP-248	75791
1350	54	MSP-254	75792
1500	60	MSP-260	75793
1800	72	MSP-272	75794
2100	84	MSP-284	76796

MSP Standard-Duty Precleaner  
Belt Width Minus 8"

Belt Width	Blade Width	Ordering	Item
mm	in.	Number	Code
600	24	MSP-824	75795
750	30	MSP-830	75796
900	36	MSP-836	75797
1050	42	MSP-842	75798
1200	48	MSP-848	75799
1350	54	MSP-854	75800
1500	60	MSP-860	75801
1800	72	MSP-872	75802
2100	84	MSP-884	76797

#### Replacement ConShear™ Blades

Blade Width	Ordering	Item
mm	Number	Code
200	CRB-200	78239
300	CRB-300	78240
350	CRB-350	78241
450	CRB-450	78242
600	CRB-600	78243
750	CRB-750	78244
800	CRB-800	78245
950	CRB-950	78246
1000	CRB-1000	78247
1150	CRB-1150	78248
1200	CRB-1200	78249
1350	CRB-1350	78250
1400	CRB-1400	78251
1550	CRB-1550	78252
1600	CRB-1600	78253
1750	CRB-1750	78254
1800	CRB-1800	78255
1950	CRB-1950	78256

Other blade sizes available upon request.

Ordering information shown is for the standard mild steel MSP with purple blade.  
Contact your Flexco distributor or visit [www.flexco.com](http://www.flexco.com) for other cleaner/blade options.

Authorised Distributor: