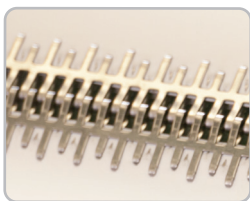


# ANKER® G Series™ Lacing



## Flat, Low-Profile Industrial Baking Splice

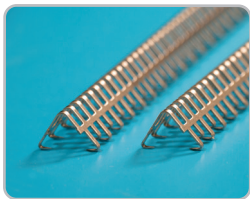
Staggered leg design and flat stamped stainless steel make the Anker® G Series a perfect option for panning conveyors offering reduced splice wear and noise potential. Made from 316 stainless, G Series can even be utilized during pre-bake, in the very early part of the dough handling process where the dough is in more of a “bulk” form and the need for frequent removal of the plied belt necessitates a hinged splice. The staggered-leg geometry of Anker G Series offers varying points of belt penetration to provide additional strength and durability for the finished splice. G Series is designed for use with PU, PES, PVC, monolithic, and rubber belting.



**Corrosion-Resistant**  
FDA Stainless Steel for use in industrial baking applications



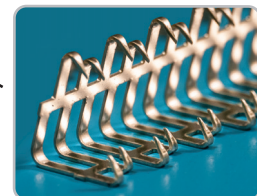
**Precision Stamping**  
ensures a consistent pitch over the entire length of the lacing for easier machine installation



**Machine-Application**  
results in a uniform, flat splice – even on belts prone to belt wave



**Flat, Low-Profile Splice**  
is ideal for applications with slider beds



**Staggered Leg Geometry**  
increases the strength and durability of the splice

### Features and Benefits:

- Easy to install with proven Anker® maintenance and production lacers, G Series splices are uniform and extremely low profile.
- The staggered legs on G 005, G 006, and G 008 – Series provide for varying points of belt penetration which increases both the strength and durability of the splice.
- The flat, continuous top bar design eliminates belt wave and reduces the possibility of dislodged fasteners.
- G Series lacing is joined with a corrugated stainless steel connecting pin that prevents pin migration during use.

### Recommended Applications:

- Food Manufacturing
- Filter Media
- Package and Parts Handling

### G Series can be installed with:

- Anker Roller Lacer®
- Anker Microlacer®
- Anker Hydraulic Belt Lacers  
(Complete series AHP, ARK, AMK, ARU, and AMU)

# ANKER®

## G Series™ Lacing

Minimum Pulley Diameter	Material Thickness	Connecting Pin Size	Belt Thickness					
	mm		1,50 mm	2,00 mm	2,50 mm	3,00 mm	3,50 mm	5,00 mm
20 mm	.50	1.00	G 00					
25 mm	.50	1.00	G 001A					
	.75	1.20		G 001				
40 mm	.50	1.20		G 005A				
	.75	1.40			G 002			
50 mm	.50	1.20			G 005			
	.75	1.40			G 006A			
						G 003		
75 mm	1.00	2.00-2.50				G 006		
						G 008		

Size	Galvanized		316 Stainless		Strips Per Box	Strip Length mm
	Ordering Number (box)	Item Code	Ordering Number (box)	Item Code		
G 00			G 00-SS-150W	16214	12	150
			G 00-SS-150W	00911	12	300
			G 00-SS-600W	00705	8	600
			G 00-SS-1200W	00912	8	1,200
			G 00-SS-1500W	00913	8	1,500
G 001A			G 001A-SS-150W	16239	12	150
			G 001A-SS-300W	00882	12	300
G001	G 001-G-150W	00532	G 001-SS-150W	16222	12	150
	G 001-G-300W	16219	G 001-SS-300W	00915	12	300
	G 001-G-600W	16220	G 001-SS-600W	16225	8	600
			G 001-SS-900W	16226	8	900
	G 001-G-1200W	16216	G 001-SS-1200W	00883	8	1,200
G002	G 001-G-1500W	16218	G 001-SS-1500W	18908	8	1,500
	G 002-G-150W	16243	G 002-SS-150W	16254	12	150
	G 002-G-300W	16246	G 002-SS-300W	04174	12	300
	G 002-G-600W	16248	G 002-SS-600W	00924	8	600
			G 002-SS-900W	16262	8	900
G003	G 002-G-1200W	16242	G 002-SS-1200W	00884	8	1,200
	G 002-G-1500W	16245	G 002-SS-1500W	04083	8	1,500
	G 003-G-150W	16268	G 003-SS-150W	16277	12	150
	G 003-G-300W	00540	G 003-SS-300W	00928	12	300
	G 003-G-600W	16269	G 003-SS-600W	00929	8	600
G 003			G 003-SS-900W	16285	8	900
	G 003-G-1200W	00543	G 003-SS-1200W	00885	8	1,200
	G 003-G-1500W	00544	G 003-SS-1500W	00931	8	1,500

Size	316 Stainless		Strips Per Box	Strip Length mm
	Ordering Number (box)	Item Code		
G 005A	G 005A-SS-300W	03608	12	300
	G 005A-SS-600W	00933	8	600
	G 005A-SS-900W	16304	8	900
	G 005A-SS-1200W	00887	8	1,200
	G 005A-SS-1500W	00935	8	1,500
G 005	G 005-SS-300W	00936	12	300
	G 005-SS-600W	03700	8	600
	G 005-SS-900W	16294	8	900
	G 005-SS-1200W	05446	8	1,200
	G 005-SS-1500W	00939	8	1,500
G 006A	G 006A-SS-300W	00940	12	300
	G 006A-SS-600W	03769	8	600
	G 006A-SS-900W	16322	8	900
	G 006A-SS-1200W	16320	8	1,200
	G 006A-SS-1500W	16321	8	1,500
G 006	G 006-SS-300W	00942	12	300
	G 006-SS-600W	05052	8	600
	G 006-SS-900W	16316	8	900
	G 006-SS-1200W	00886	8	1,200
	G 006-SS-1500W	00304	8	1,500
G 008	G 008-SS-300W	16325	12	300
	G 008-SS-600W	16326	8	600
	G 008-SS-900W	16327	8	900
	G 008-SS-1200W	16323	8	1,200
	G 008-SS-1500W	16324	8	1,500

Special length on request.

Manual Lacers	Face Strips	Width (mm)	Electro Hydraulic Lacers	Adaptors/Combs	Width (mm)
Micro Lacer ML-351	FS-351 G	350	ARK 150	ZAG...200	200
Roller Lacer 601	FS-601 G	600	ARK 150-WNP	ZAG...200	200
Roller Lacer 901	FS-901 G	900	ARK 200	ZAG...200	200
Roller Lacer 1201	FS-1201 G	1,200	AMK 400	ZAG...400	400
Roller Lacer 1501	FS-1501 G	1,500	AMK 400-NP	ZAG...400	400
Roller Lacer 1801	FS-1801 G	1,800	ARU 2000	UKG...601-901	600-900
<b>Manual Hydraulic Lacer</b>	<b>Adaptor</b>	<b>Width (mm)</b>	ARU 3000	UKG...601-901	600-900
AHP 120	ZAG-1.6-120	120	AMU 4000	UKG...601-1501	600-1.500
			AMU 6000	UKG...601-1501	600-1.500
			AMU 8000	UKG...601-1501	600-1.500

— Made To Order Items (shaded) have added lead time.

Authorised Distributor:

