

# Electric Hydraulic Lacer Parts List



ITEM	LACER	DESCRIPTION
03015	ALL	WASHER, SPRING LOCK, #10
03040	ALL	LH TOP GUARD
03926	ALL	SCRW PAN HD 8-32 x 1/2 PHILLIPS 2
03042	ALL	RH TOP GUARD
03052	25, 38	CENTER GUARDS
03053	25, 38	JAW CONNECTORS
03055	25, 38	SNUB NOSE PLUNGER
03056	25, 38	SCREW, ALLEN HD, 5/16-18 x 1
03058	25, 38	DOWEL, 1/4 x 3/4
03172	ALL	ALIGNING BAR
G1180	ALL	SCREW, ALLEN HD, 10-32 x 1/2
03179	ALL	PIVOT WASHER ASSY
03182	ALL	SM EQUAL. SPRING WASHER
03183	ALL	LG EQUAL. SPRING WASHER
03188	ALL	WASHER, SPR LOCK, 3/8
G1252	ALL	SCREW, ALLEN HD, 5/16-24 x 5/8 BLK
03192	ALL	TOGGLE SHAFT ROLLER
03196	ALL	COTTER PIN, 3/32 x 1-1/2
03198	ALL	STATIONARY TIE ROD NUT
03200	ALL	TOGGLE LINK
03201	ALL	LOWER STAY BOLT
03203	ALL	LONG UPPER TIE ROD

03204	ALL	RH CENTER FRAME ASSY
<b>INCLUDES:</b>		
		03015 WASHER, SPRING LOCK, #10
		G4827 #12 RH CENTER FRAME
		03184 PLUNGER CLIP
		03185 SCREW, FIL HD, 10-32 x 5/16
		03186 PLUNGER SPRING
		03187 PLUNGER

03454	ALL	#12 JAW ASSY
<b>INCLUDES:</b>		
		G1180 SCREW, FIL HD, 10-3 x 1/2
		03193 LOWER GUIDE PIN
		03194 UPPER GUIDE PIN
		03489 OVAL PRESSURE PLATE
		G0149 SPRING PIN, 1/8 x 3/8

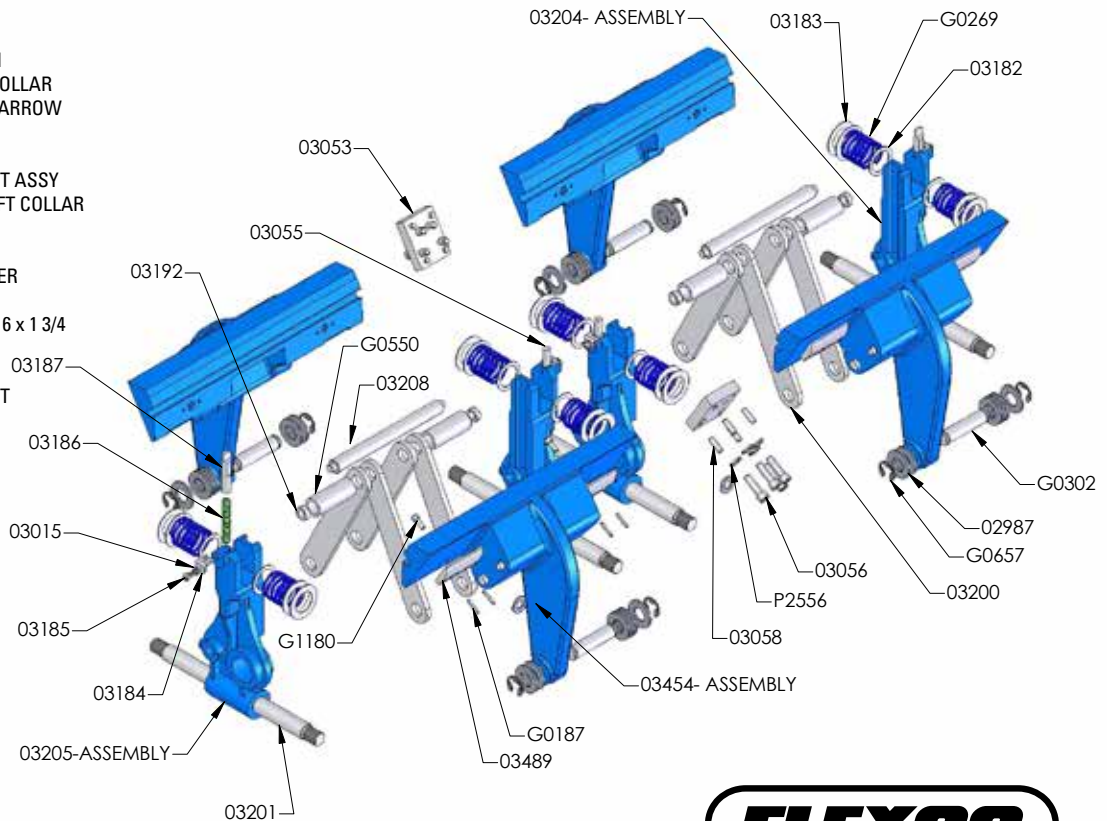
03456	ALL	LONG CHAIN
G0267	25	#25 ADJUSTING LEVER
G0269	ALL	TIE ROD SPRING
G0275	25, 38	SPROCKET NUT ASSY
G0300	38	#38 ADJUSTING LEVER
G0302	ALL	#38 EH TOGGLE LINK PIN
G0303	38	#38 EH TOGGLE SHAFT COLLAR
02987	ALL	WSHR FLAT 5/8 PLAIN NARROW
G0526	ALL	IDLER BUSHING
G0538	ALL	NUT, HEX, 5/8-1/8
G0544	ALL	ADJUSTING TIE ROD NUT ASSY
G0550	12, 25	#12/#25 EH TOGGLE SHAFT COLLAR
G0576	12	#12 ADJUSTING LEVER
G0577	ALL	IDLER SPROCKET
G0578	ALL	IDLER SPROCKET CARRIER
G0590	25, 38	SHORT CHAIN
G0614	38	SCREW, HEX HEAD, 3/8-16 x 1 3/4
G0657	ALL	E CLIP
G0247	25	EH EVENER BAR
G0296	38	EVENER BAR WELDMENT
G0272	25	PISTON CONNECTOR
03782	38	PISTON CONNECTOR
G0202	12	PISTON CONNECTOR

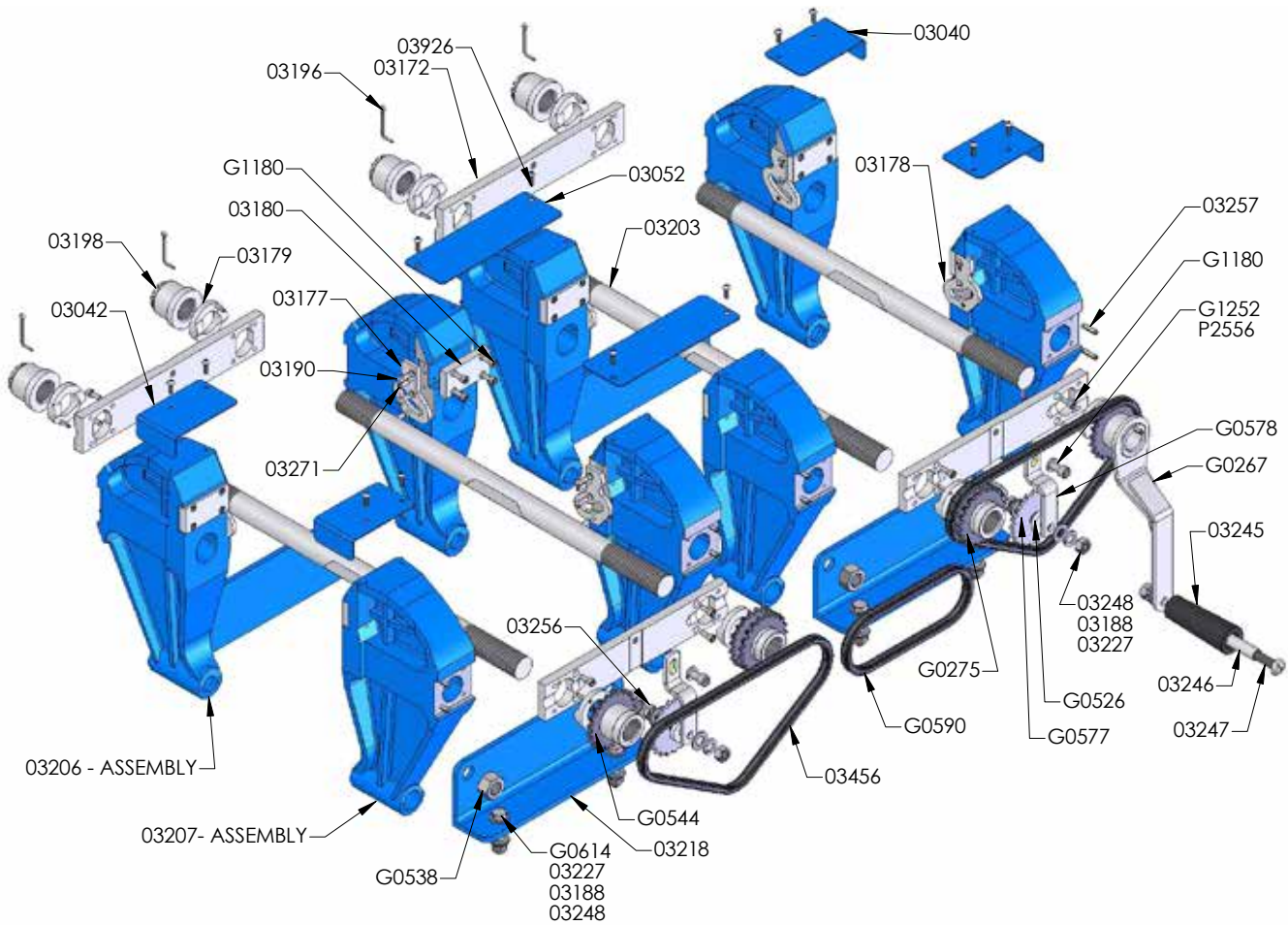
ITEM	LACER	DESCRIPTION
03205	ALL	LH CENTER FRAME ASSY
<b>INCLUDES:</b>		
		03015 WASHER, SPRING LOCK, #10
		G4828 #12 LH CENTER FRAME
		03184 PLUNGER CLIP
		03185 SCREW, FIL HD, 10-32 x 5/16
		03186 PLUNGER SPRING
		03187 PLUNGER

03206	ALL	RH FRAME ARM ASSY
<b>INCLUDES:</b>		
		G1180 SCREW, FIL HD, 10-32 x 1/2
		03178 RH GUIDE PLATE
		03180 FLAT PRESSURE PLATE
		03190 GUIDE PLATE SCREWS
		03271 SPRING PIN, 3/16 x 1/2
		G0516 RH FRAME ARM

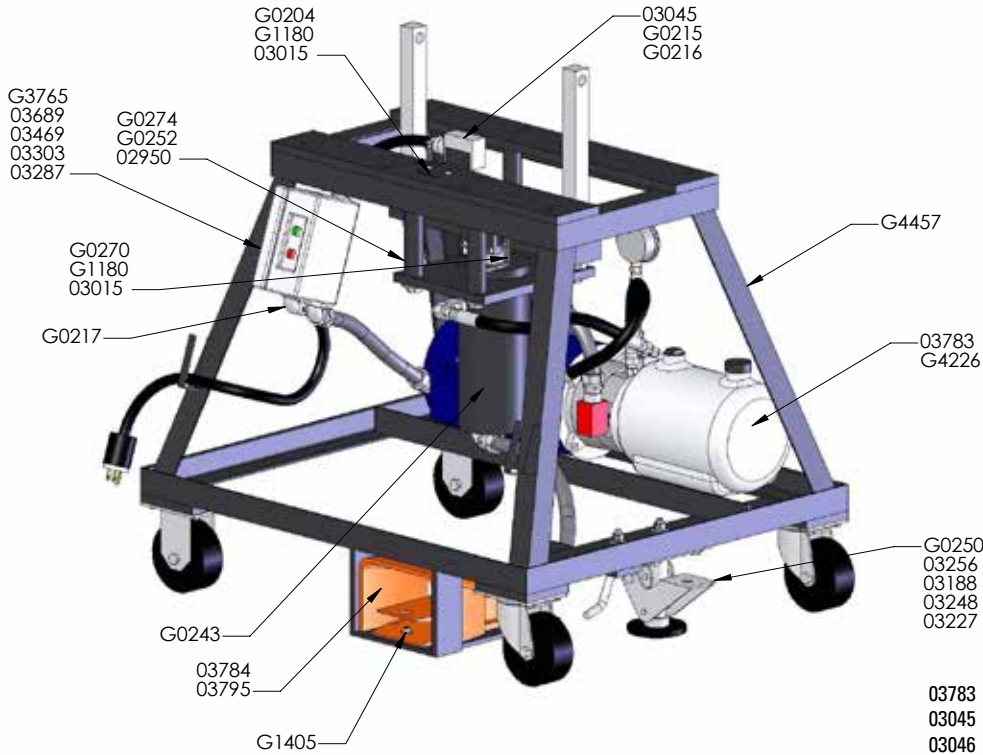
03207	ALL	LH FRAME ARM ASSY
<b>INCLUDES:</b>		
		G1180 SCREW, FIL HD, 10-32 x 1/2
		03177 LH GUIDE PLATE
		03180 FLAT PRESSURE PLATE
		03190 GUIDE PLATE SCREWS
		03271 SPRING PIN, 3/16 x 1/2
		G0517 LH FRAME ARM

03208	ALL	TOGGLE SHAFT
03218	ALL	FRAME ANGLE
03227	ALL	WASHER, FLAT, 3/8
03245	ALL	HANDLE, PLASTIC
03246	ALL	HANDLE SLEEVE
03247	ALL	SCREW, ROUND HEAD, 3/8-16 x 3
03248	ALL	3/8-16 HEX NUT
03256	ALL	SCREW, HEX HD 3/8-16 x 1-1/4
03257	ALL	SPRING PIN, 3/16 x 3/4
03271	ALL	SPRING PIN, 3/16 x 1/2

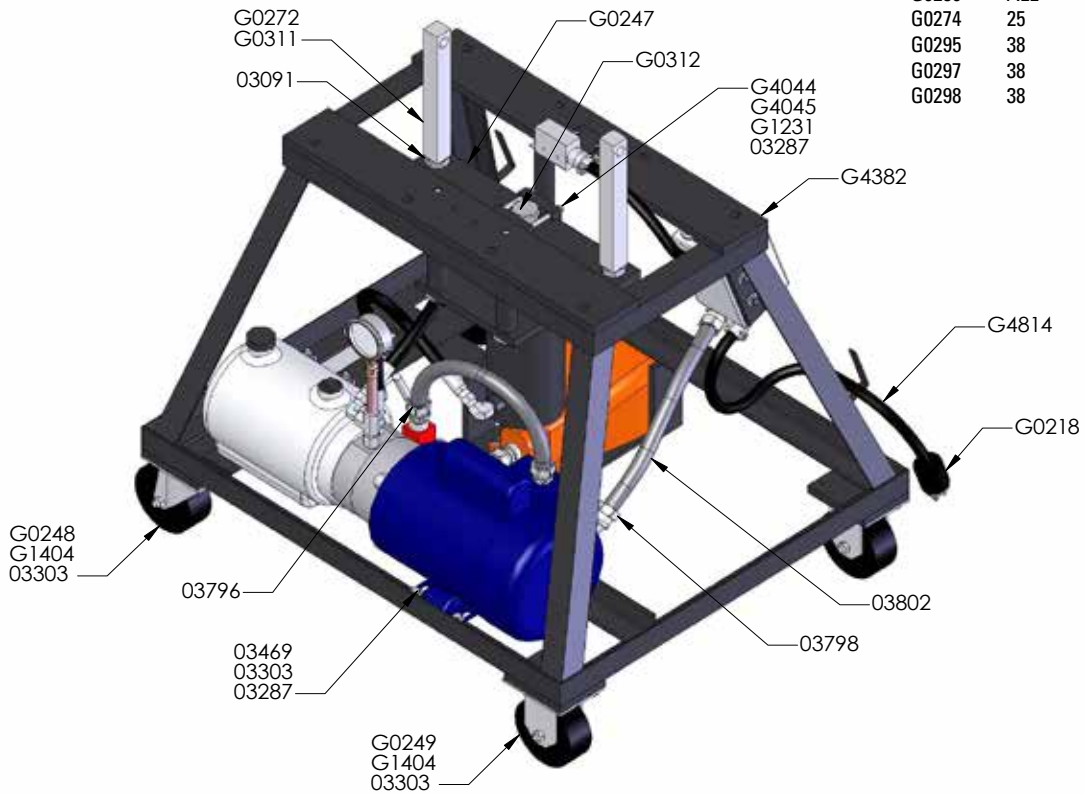




# Lacer Stand And Hydraulic Components



03783	ALL	MOTOR TANK & PUMP ASSY
03045	ALL	MICROSWITCH
03046	ALL	SWITCH
03048	ALL	PRESSURE GAUGE
03784	ALL	FOOT SWITCH
G0208	12	#12 HYDRAULIC CYLINDER
G0243	25	#25 HYDRAULIC CYLINDER
G0247	25	#25 EVENER BAR
G0248	ALL	SWIVEL CASTER
G0249	ALL	RIGID CASTER
G0250	ALL	FLOOR LOCK
G0274	25	#25 EH CYLINDER SPACER
G0295	38	#38 HYDRAULIC CYLINDER
G0297	38	BOLT, HEX HD, 1/2-13 x 9-1/2
G0298	38	#38 EH CYLINDER SPACER

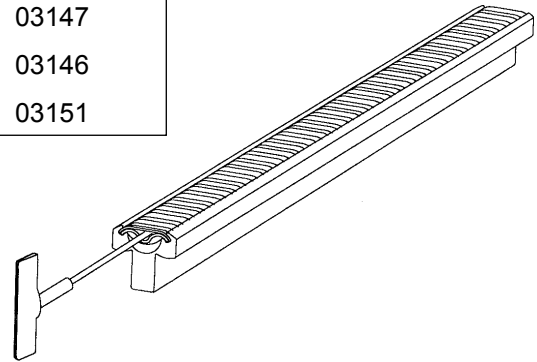


## Parts List - Hook Retainers

LACER WIDTH	LACER MODEL NUMBER	HOOK RETAINERS FOR HOOK SIZES:			
		#2-#7, U2-U7 (REG. ACUSTEEL)	#1, UX-1 (#1 ACUSTEEL)	#36, UCM36, #30 (#36 ACUSTEEL)	#25 (#25 ACUSTEEL)
12"	03037	03211	03168	03170	03822
25"	03038	03051	03143	03154	03823
38"	03039	03148	03150	03155	03824

### Lacer Pins (Lacer pins are supplied with each Hook Retainer)

LACER WIDTH	LACER MODEL NUMBER	REG. ACUSTEEL HOOK RETAINER	#1/#36 ACUSTEEL HOOK RETAINER	#25 ACUSTEEL HOOK RETAINER
12"	03037	03222	03169	03147
25"	03038	03054	03162	03146
38"	03039	03156	03163	03151



## General Specifications

### Hydraulic Power Supply

Positive displacement gear pump unit with built-in relief valve and fluid reservoir

### Capacity

Pump - 3.28 GPM (12 LPM)  
1200 PSI (8 MPa) maximum pressure

3400 RPM

Reservoir - 3 quarts (2.8L), with breather

### Hydraulic Fluid

Type A Automatic Transmission Fluid

### Hoses

3/8" (10 mm) ID, 2600 PSI (18MPa) working pressure, 8000 PSI (53MPa) bursting pressure

### Cylinder

2500 PSI (16 MPa) working pressure

Stroke - 3-5/8"

Bore - 12" Lacer - 2-1/2,"

25" Lacer - 3-/2,"

38" Lacer - 4-1/2"

### Relief Valve Settings

Pump - 850-950 PSI (5.8-6.5 MPa)

Motor - Split Single Phase, 110/220 VAC 60 cycle.

3450 RPM, direct coupled

### Electric Power Supply

#### Manual Starter

Open type - 2 pole 110-220 VAC/DC with overload protection

#### Micro Switches

- 25A - 110 VAC, 480 VAC MAX

### Dimensions & Weights

12" Length 20" (508 mm)  
Width 30" (760 mm)  
Height 41" (1040 mm)  
Weight 270# (128 kg)

25" Length 30" (760 mm)  
Width 25" (630 mm)  
Height 38" (960 mm)  
Weight 450# (205 kg)

38" Length 39" (990 mm)  
Width 26" (660 mm)  
Height 38" (960 mm)  
Weight 670# (305 kg)



2525 Wisconsin Avenue • Downers Grove, IL 60515-4200 • USA  
Tel: (630) 971-0150 • Fax: (630) 971-1180 • E-mail: info@flexco.com

Visit [www.flexco.com](http://www.flexco.com) for other Flexco locations and products.

©2018 Flexible Steel Lacing Company. Clipper®, Unibar® and Flexco® are registered trademarks. 06/18/18. For Reorder: X5382

