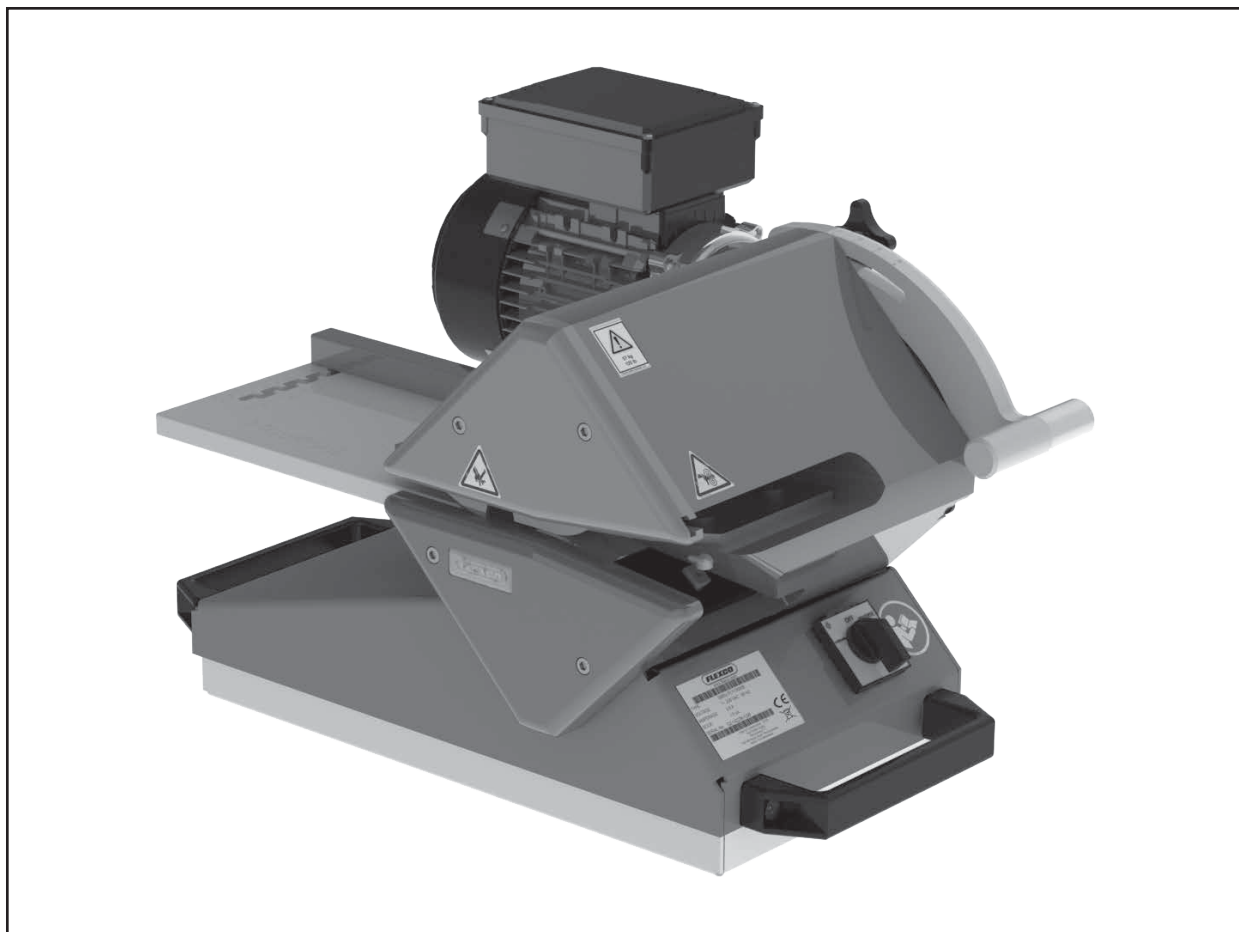


Novitool® Ply 130™ Separator High Volume Step Cutter Blade Safety and Operation Manual

Separate between the plies of a conveyor belt.



WARNING

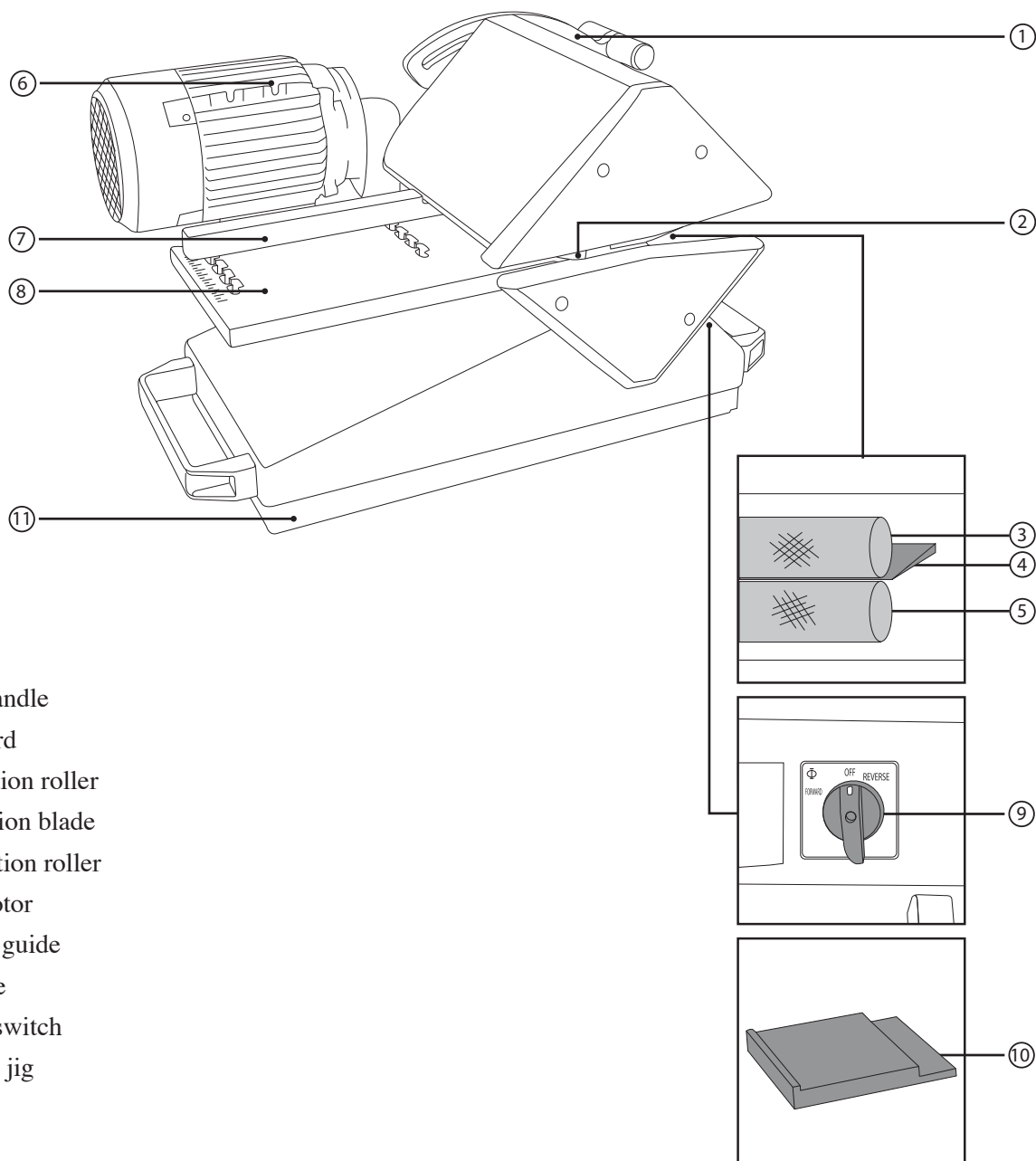
IMPROPER OR UNSAFE use of this tool can result in serious bodily injury! This manual contains important information about product function and safety. Please read and understand this manual BEFORE operating the tool. Please keep this manual available for other users and owners before they use the tool. This manual should be stored in a safe place.

Table of Contents

Main Components Ply 130™	3
Description.....	4
General Safety Rules.....	5
Brass Spacer Replacement.....	9
Ply 130™ Maintenance - Blade Replacement.....	12
Ply 130™ Maintenance - Measure and Adjust Blade/Roller Clearance as Necessary.....	18
Parts Lists.....	27
Technical Assistance	28

Disclaimer The Ply 130™ ply separator has been tested successfully with different belt types. However this is no guarantee for good results. Fabricating belts does require the operator to master skills and have a certain level of craftsmanship. Results also depend on good practice, material composition and sharpness of blade. If results are not as expected, please contact Flexco.

Main Components Ply 130™



1. Adjuster handle
2. Finger guard
3. Upper traction roller
4. Ply separation blade
5. Lower traction roller
6. Electric motor
7. Adjustable guide
8. Infeed table
9. Operating switch
10. Calibration jig
11. Ply tray

Description

The Ply 130™ is used to separate between the plies of a thermoplastic conveyor belt, PVC or polyurethane. This splitting action is often required in preparation before splicing a belt with a splice press.

A great advantage of this ply separator is that it can split as deep as 5" (130 mm) in one pass.









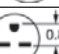







The robust construction of the Ply 130™ allows for precise separating of thermoplastic belts – both thin and thick between plies as little as 0.014" (0.35 mm) can be separated.

The Ply 130™ can be used to prepare finger over finger splices and stepped splices. With the adjuster handle you determine the depth to split the belt. It may be possible to split between every ply of the belt and in this way to generate two or three separations within one belt.

The high volume step cutter blade separates stepped edges. The layer passing above the separation blade is cut off simultaneously

Tool Specifications

Ply 130™ Tool Specifications		
Specifications	Minimum	Maximum
Splitting Depth	1.5" (40 mm)	5.1" (130 mm)
Belt thickness above cut	.014" (0.35 mm)	.3" (8 mm)
Belt thickness below cut	.014" (0.35 mm)	.2" (5 mm)
Maximum belt thickness	N/A	.4" (10 mm)
Tool dimensions	22" x 19" x 14" (560 x 480 x 360 mm)	
Tool weight	125 lbs (57kgs)	

Ply 130™ Ordering Information			
Item Code	Ordering Number	Mark	Plug
Ply 130™			
08800	PLY130-230V+N1PH50HZ-SCHUKO	CE	
08801	PLY130-400V+NV3PH50HZ-IEC60309	CE	
08802	PLY130-115V1PH60HZ-NEMA-5-15	cETL	
08803	PLY130-230V1PH60HZ-NEMA-L6-20	cETL	
08804	PLY130-230V1PH60HZ-NEMA-L6-30	cETL	
08805	PLY130-230V1PH60HZ-NEMA-L6-15	cETL	
08806	PLY130-230V1PH60HZ-NEMA-6-15	cETL	
08807	PLY130-230V1PH60HZ-NEMA-6-20	cETL	
08808	PLY130-230V1PH60HZ-NEMA-6-30	cETL	
08809	PLY130-230V3PH60HZ-NEMA-L15-20	cETL	
08810	PLY130-230V3PH60HZ-NEMA-L15-30	cETL	
08811	PLY130-460V3PH60HZ-NEMA-L16-20	cETL	
08812	PLY130-460V3PH60HZ-NEMA-L16-30	cETL	
08832	PLY130-230V1PH50HZ-IEC60309-16	CE	
08833	PLY130-230V1PH50HZ+N-BS1363-13	CE	
08834	PLY130-230V3PH60HZ-NEMA-18-20		
Cart			
08100	PLY130-CART		N/A
Replacement Blades			
08014	PLY-BL-BLADE-&-JIG-KIT		N/A
08490	PLY130-BLADE		N/A

General Safety Rules—Save These Instructions—

Signal words:

“DANGER” indicates an imminently hazardous situation which, if not avoided, will result in death or serious injury. The signal word is limited to the most extreme situations.

“WARNING” indicates a potentially hazardous situation which, if not avoided, could result in death or serious injury.

“CAUTION” indicates a potentially hazardous situation which, if not avoided, may result in minor or moderate injury. It may also be used to alert against unsafe practices.

Safety Symbol



This international safety symbol is used to identify and call attention to specific safety matters.

Safety Information

To Avoid Severe Personal Injury or Property Damage, read carefully and understand the following Safety Precautions.

1. WORK AREA

CAUTION

Keep your work area clean and well lit. Cluttered benches and dark areas invite accidents.

DANGER

Do not operate power tools in explosive atmospheres, such as in the presence of flammable liquids, gases, or dust. Power tools create sparks which may ignite the dust or fumes.

CAUTION

Keep bystanders, children, and visitors away while operating a power tool. Distractions can cause you to lose control.

WARNING

Never leave tool until it comes to a complete stop.

WARNING

Store idle tools out of reach of children and other untrained persons. Tools are dangerous in the hands of untrained users.

2. ELECTRICAL SAFETY

DANGER

The Ply Separator is a single insulated tool and needs a multiple wire grounded power cord and grounded power supply system. The machine is provided with an electrical plug to ensure connection to the proper supply power.

WARNING

Avoid body contact with grounded surfaces such as pipes, radiators, ranges, and refrigerators. There is an increased risk of electric shock.

WARNING

Do not expose power tools to rain or wet conditions. Water entering a power tool will increase the risk of electric shock and will damage the tool.

General Safety Rules –Save These Instructions–

DANGER

Do not abuse the cord. Never use the cord to carry the tool or pull the plug from a receptacle. Keep cord away from heat, oil, sharp edges, or moving parts. Replace damaged cords immediately. Damaged cords increase the risk of electric shock.

WARNING

Do not use outdoors. This power tool is designed for indoor use only.

WARNING

Do not use tool if switch does not turn it on or off. Any tool that cannot be controlled with the switch is dangerous and must be repaired.

Disconnect machine from supply circuit before servicing. Ensure all protective ground connections are in place after service. Replace fuses only with those of the same current rating, interrupt rating, voltage rating and construction.

3. PERSONAL SAFETY

WARNING

Stay alert, watch what you are doing and use common sense when operating a power tool. Do not use tool while tired or under the influence of drugs, alcohol, or medication. A moment of inattention while operating power tools may result in serious personal injury.

WARNING

Dress properly. Do not wear loose clothing or jewelry. Contain long hair. Keep your hair, clothing, and gloves away from moving parts. Loose clothes, jewelry, or long hair can be caught in moving parts.

WARNING

Avoid accidental starting. Be sure switch is off before plugging in. Carrying tools with your finger on the switch or plugging in tools that have the switch on invites accidents.

WARNING

Do not overreach. Keep proper footing and balance at all times. Proper footing and balance enables better control of the tool in unexpected situations.

CAUTION

Use safety equipment. Always wear eye protection. Dust mask, non-skid safety shoes, hard hat, or hearing protection must be used for appropriate conditions.

WARNING

Never alter or remove safety devices.

WARNING

Keep your hands and fingers away from all moving and sharp parts, e.g. rolls and blade, at all times.

WARNING

Engage caster locks on cart when not transporting

WARNING

Machine is heavy. Use lifting aids.

4 TOOL USE AND CARE

WARNING

Always use the ply separator on a level, firm surface. Splitting should be performed operating the machine with two hands on the material.

CAUTION

Do not force tool when the belt material blocks or jams and do not continue feeding the material through tool. When jammed put the operating direction in reverse to remove the material.

WARNING

Do not use tool if switch does not turn it on or off. Any tool that cannot be controlled with the switch is dangerous and must be repaired.

General Safety Rules –Save These Instructions–

WARNING

Disconnect the plug from the power source before making any adjustments, changing accessories, or storing or transporting the tool. Such preventive safety measures reduce the risk of starting the tool accidentally.

WARNING

Store idle tools out of reach of children and other untrained persons. Tools are dangerous in the hands of untrained users.

CAUTION

The Ply Separator should not be used to split other materials than thermoplastic belting materials. The thickness of the belting material should never exceed 10 mm.

CAUTION

Check for misalignment or binding of moving parts, breakage of parts, and any other condition that may affect the tool's operation. If damaged, have the tool serviced before using. Many accidents are caused by poorly maintained tools.

WARNING

Stow foot switch when not in use.

WARNING

Disconnect and stow cables before moving.

5. SERVICE AND MAINTENANCE

WARNING

Tool service must be performed only by qualified repair personnel. Service or maintenance performed by unqualified personnel could result in a risk of injury.

WARNING

Disconnect electrical plug from the power supply before opening/servicing the machine.

CAUTION

When servicing a tool, use only identical replacement parts. Use of unauthorized parts or failure to follow Maintenance Instruction may create a risk of electric shock or injury.

DANGER

Do not use power tools if the housing is damaged or not closed. Damaged or (partially) open housing can lead to electric shock. Such tools should not be used until repaired or closed.

CAUTION

Do not wipe plastic parts with solvent. Solvents such as gasoline, thinner, benzene, carbon tetrachloride, and alcohol may damage and crack plastic parts. Do not wipe them with such solvents. Wipe plastic parts with a soft cloth lightly dampened with soapy water and dry thoroughly.

WARNING

NEVER use a tool which is defective or operating abnormally. If the tool appears to be operating unusually, making strange noises, or otherwise appears defective, stop using it immediately, disconnect from power supply and arrange for repairs.

CAUTION

Maintain tools with care. Keep blades sharp and clean. Properly serviced tools and knives with sharp edges are less likely to bind or create debris and are easier to control.

6. PLY CUTTER SAFETY

WARNING

Make sure that the power cable is not near the material entrance opening.

WARNING

Keep your body positioned perpendicular to the material feeding direction on the opposite side of the electric motor.

FLEXCO

WARNING

Keep your hands away from the feeding rolls and splitting area. Always guide the material in a way that your hands have a minimum distance of 3.94" (10 cm) from this area.

CAUTION

Do not use dull or damaged blades/ knives.

7. PLY CART SAFETY

WARNING

Avoid inclines, declines and floor obstructions when pushing cart. Only push cart in directions permitted by fixed casters, never pull or attempt to slide sideways.

8. REPLACING THE BLADE

WARNING

Disconnect power.

CAUTION

Do not attempt to resharpen blades. This will affect splitting completely through belt.

WARNING

Always wear cut-proof safety gloves and safety glasses when replacing blade. Blade is razor sharp, treat it accordingly.

WARNING

Before performing a blade replacement, follow all procedures stated in manual.

WARNING

Only authorized and trained technicians should work on the ply separator.

WARNING

Test the splitter after blade / knife replacements to make sure that it can be used safely.

WARNING

Stow spare blades safely.

Brass Spacer Replacement

Prior to setting up the Ply 130™ for the high volume step cutter, remove the standard ply blade using instructions starting on page 12. Once the blade is removed replace the brass spacer per the instructions below. The small diameter brass spacer may be used for both the standard ply blade as well as the high volume step cutter blade.

A1



CAUTION: Disconnect Ply 130 power cable from the power source.

Remove the two 5 mm hex screws from existing top faceplate on Ply 130.

A2



Lightly tap at back edge of top faceplate with a rubber mallet until a small opening appears in between the top cover plate and the Ply 130 body. A small rubber-tipped chisel may be required if the faceplate is a tight fit. While tapping back edge of faceplate, alternate low pulling force on each side of faceplate until removed.

A3



Remove finger guard plate.

Brass Spacer Replacement

A4



Remove brass spacer.

A5



Replace brass spacer with smaller diameter spacer.

A5a



Brass Spacer Replacement

A6



Reinstall finger guard ensuring that dowels are installed in the Ply 130 body as shown.

A7



With traction roller and dowel pins properly aligned, mount faceplate flat to Ply 130 frame, lightly tapping with rubber mallet, if required.

CAUTION: Do not use screws to pull faceplate to Ply 130 frame.

A8



Using a hex key, tightly secure the two 5 mm hex screws securing faceplate to Ply 130 frame.

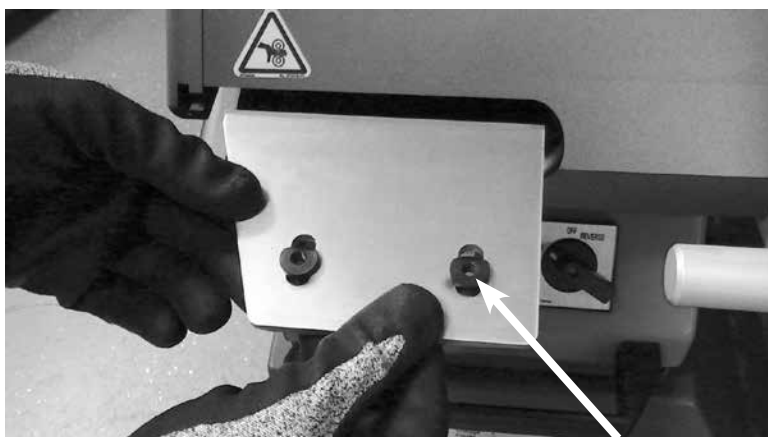
High Volume Step Cutter Blade Installation

Prior to blade replacement ensure:

- The power cable is disconnected from the power supply.
- The high volume step cutter, calibration jig and clearance shims are readily available.
- The operator is wearing cut-proof safety gloves and safety glasses.

B1

Release blade by unscrewing two bolts at bottom of blade with a 5 mm hex key.

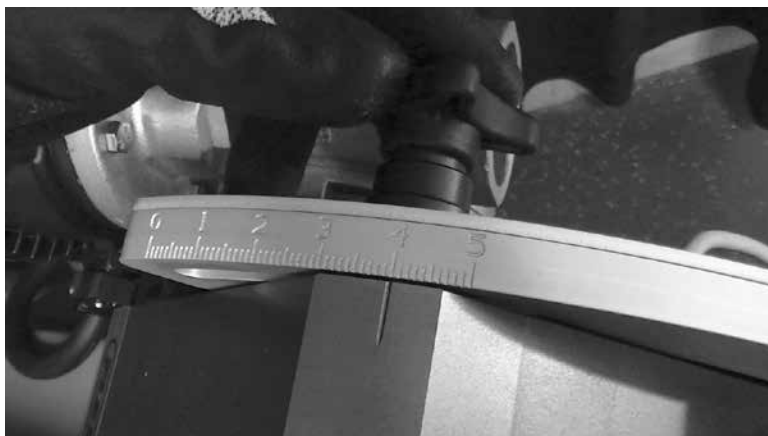
**B2**

Remove blade carefully. Remove blade nuts and set aside for future use. Retain brass spacers should they release with the bolts.

Warning: Do not touch blade edge.

High Volume Step Cutter Blade Installation

B3



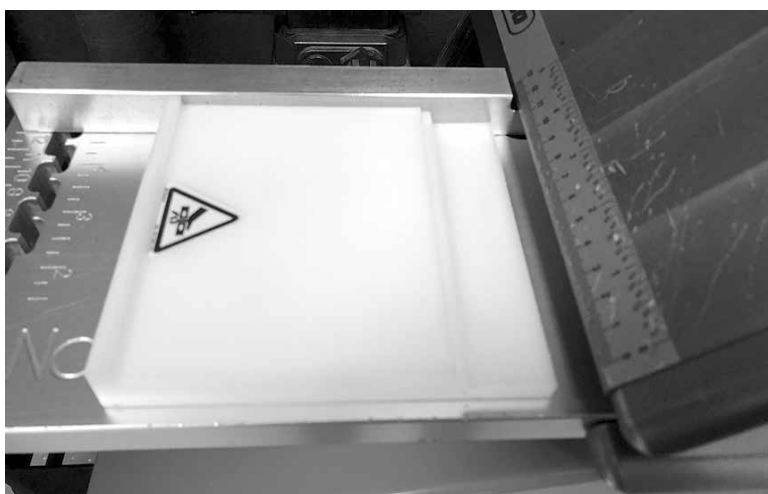
Lock adjusting handle in position 4.0 to 4.5.

B4



Lock adjusting guide to 120 mm.

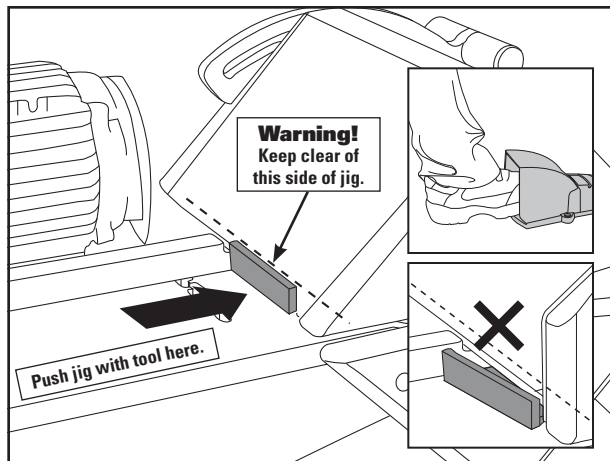
B5



Place white calibration jig on feed table with thin edge toward rollers. Plug in power connection. Turn switch to 'FORWARD'.

High Volume Step Cutter Blade Installation

B6



With moderate force, push calibration jig into Ply 130 using a block of wood or tool simultaneously turning on Ply with foot switch. When lip of jig is tight up against the Ply frame, release the foot switch and toggle operating switch to "OFF". Disconnect power.

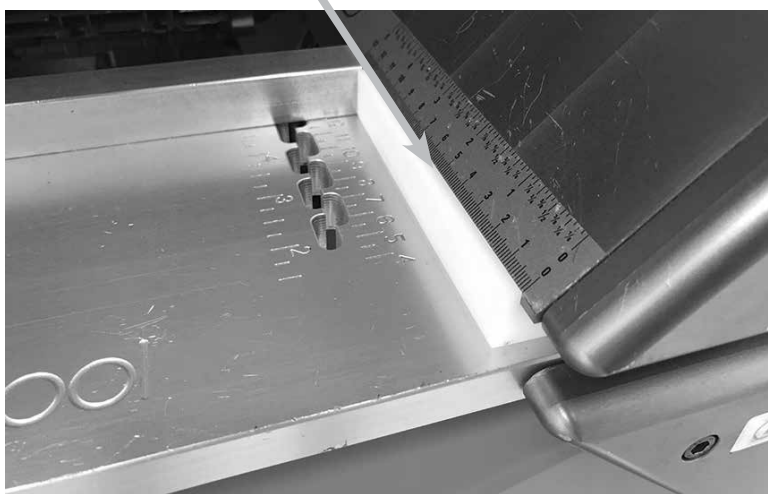
Note: Calibration jig must be parallel to frame.



Caution: Note pinch point as jig enters the ply separator frame.



Pinch Points

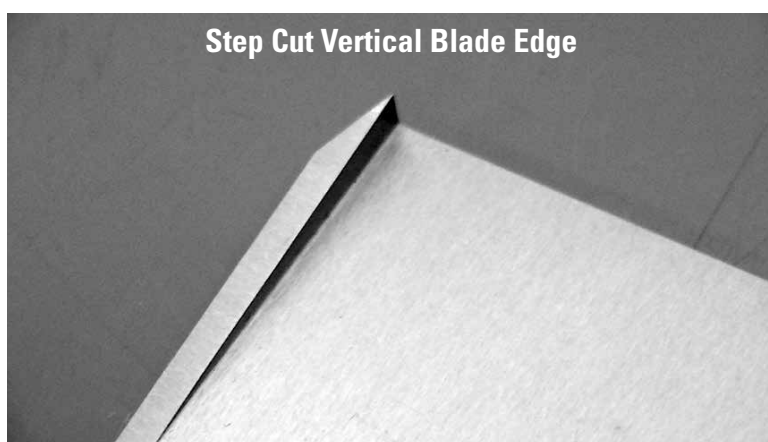
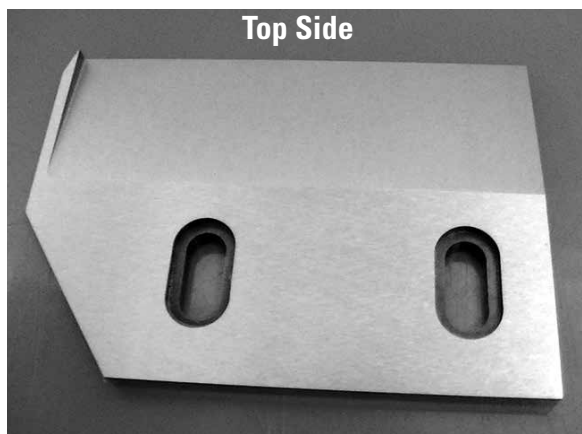


High Volume Step Cutter Blade Installation

B7

Install high volume step cutter blade with bottom side down.

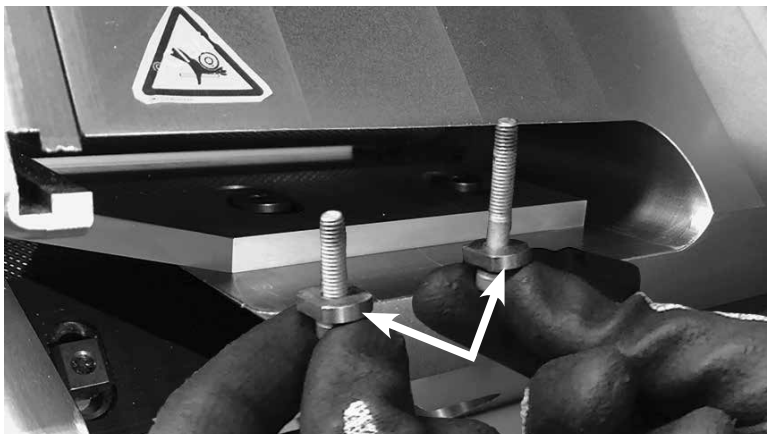
Warning: Do not touch blade edge.



Insert nuts so that bevels are facing toward traction rollers.

High Volume Step Cutter Blade Installation

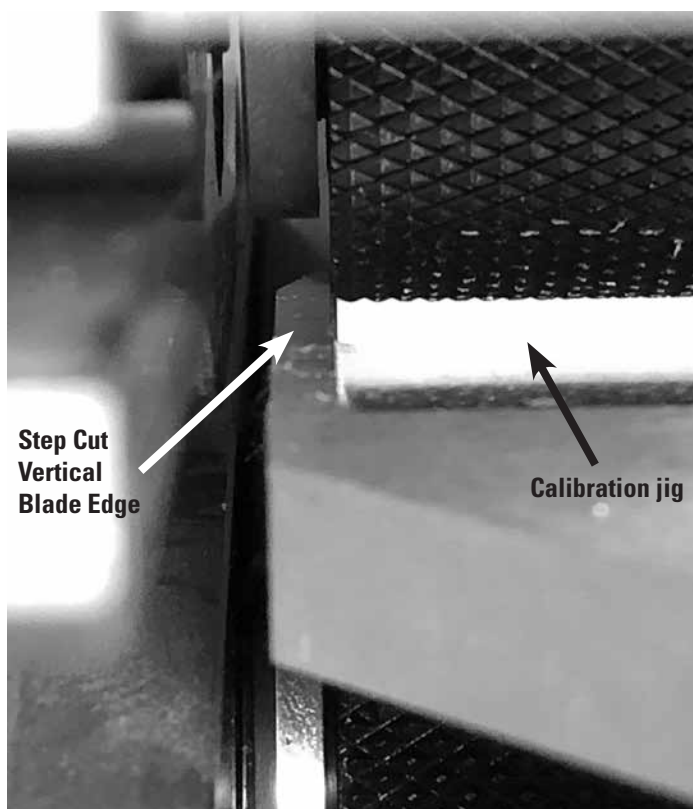
B8



Ensure brass spacers are present either in the Ply frame or on bolt. Finger tighten bolts only so that the blade can still shift (long bolt in rear and short bolt in front).

Note: Bolts don't extend above the top of the nut once installed.

B9



Apply pressure to the back side of blade so that the blade tip squarely rests against the calibration jig.

High Volume Step Cutter Blade Installation

B10



Tighten bolts firmly while keeping cutting edge of blade squared up against the jig.

B11



Reconnect power cable to electrical power supply. Toggle switch to 'REVERSE' to release calibration jig from between traction rollers.

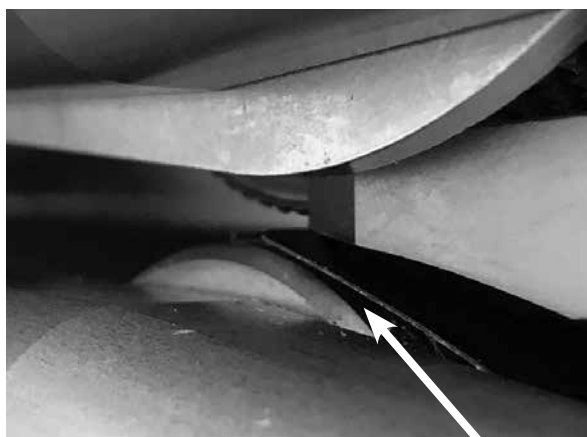
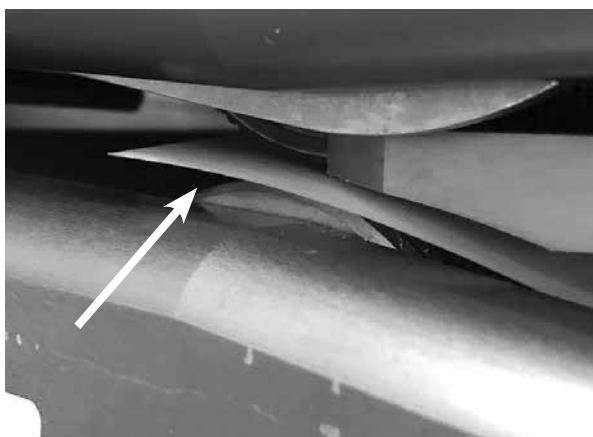
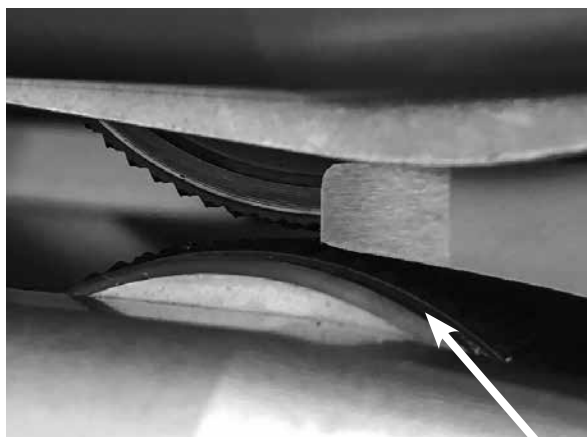
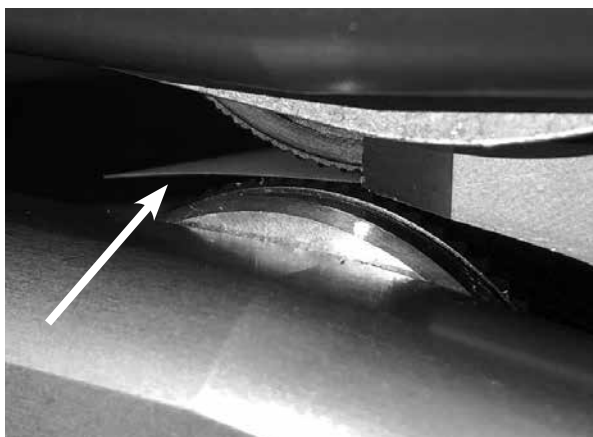
Ply 130™ Maintenance – Measure and Adjust Blade/Roller Clearance As Necessary

Verify Blade/Roller Clearance:

- Disconnect power cable from the power supply.
- After replacing the ply separation blade, it may be necessary to adjust traction roller height.

C1

To evaluate clearance between the upper traction roller and top of blade, begin by positioning the adjustment handle to 0. Insert the white thickness clearance shim between the ply separation blade and the top traction roller. The shim should move freely with little resistance. The black clearance thickness shim should not fit between the ply separation blade and the top traction roller. Repeat the same process to evaluate clearance between bottom of blade to lower traction roller.



Ply 130™ Maintenance – Measure and Adjust Blade/Roller Clearance As Necessary

C2



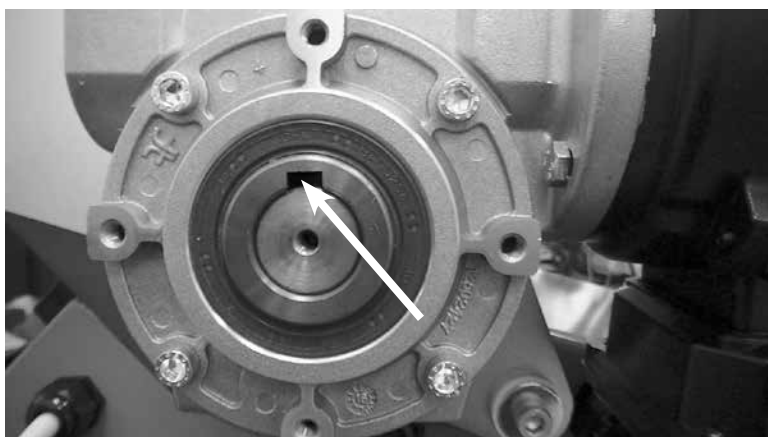
If adjustment is needed, unscrew clamp nut on adjustment guard plate.

C3



Using a 5 mm hex key, remove the handle.

C4



For easier removal of motor ensure keyway is positioned at top of drive shaft.

Ply 130™ Maintenance – Measure and Adjust Blade/Roller Clearance As Necessary

C5



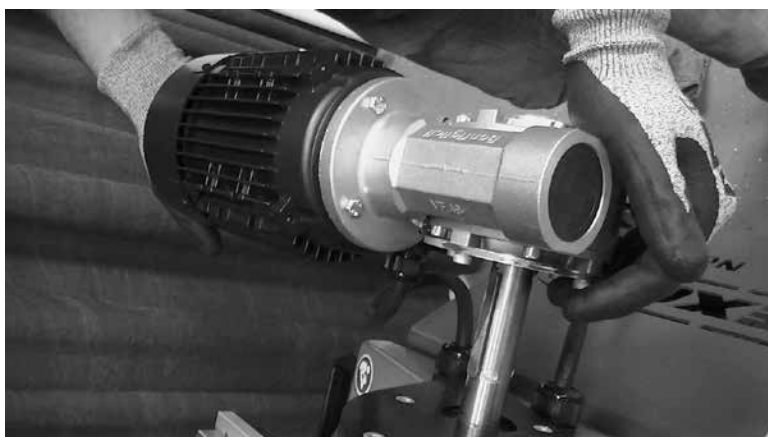
Remove the electric motor to gain sufficient access for adjustment of traction rollers by first removing the torque arm bolt using a 6 mm hex wrench.

C6



After removal of torque arm bolt set spacer aside.

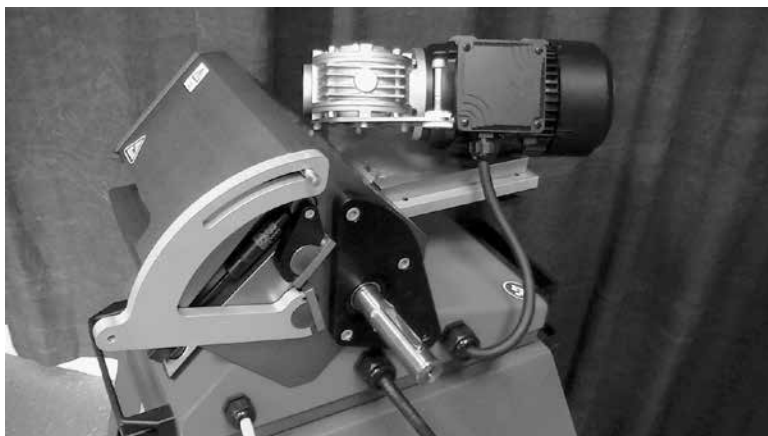
C7



Slide motor off shaft.

Ply 130™ Maintenance – Measure and Adjust Blade/Roller Clearance As Necessary

C8



Carefully rest motor on infed tray.



Caution: Do not allow motor to slide off of tray surface.

Adjustments to Increase or Decrease the Distance Between the Upper Roller and Blade

C9



For upper roller adjustment loosen and remove gas spring fixation screw.

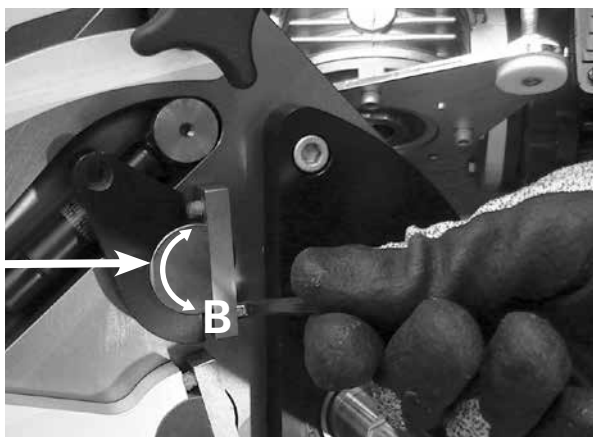
Ply 130™ Maintenance – Measure and Adjust Blade/Roller Clearance As Necessary

The purpose of the adjustment is to turn the eccentric shaft. It is important to turn, for both A and B, a recommended one quarter turn or less prior to rechecking with shims.

C10

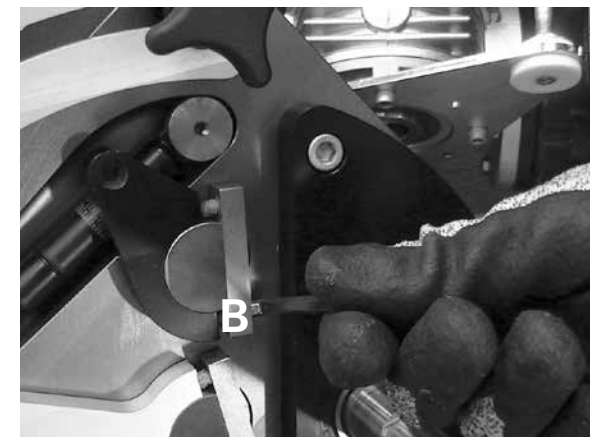
For increasing the clearance between the top roller and blade: using a 5 mm hex key to engage screws, loosen screw B counterclockwise one quarter turn and tighten screw A clockwise one quarter turn or until moderately tight.

**Eccentric
Shaft**



C11

To decrease the clearance between the top roller and blade: loosen screw A counterclockwise one quarter of a turn and tighten screw B clockwise one quarter turn or until moderately tight.



Ply 130™ Maintenance – Measure and Adjust Blade/Roller Clearance As Necessary

C12



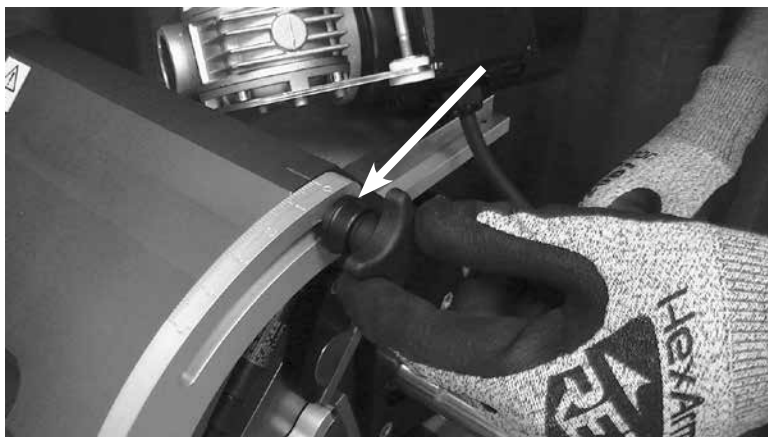
Reinstall gas spring screw.

C13

Check for clearance between the top traction roller and blade by inserting the clearance shims. There should be little resistance as the operator slides the white shim between the top traction roller and blade and the black shim should not pass through between the top traction roller and the blade. Repeat steps C9-C13 as necessary.

Adjustments to Increase or Decrease the Distance Between the Lower Roller and Blade

C14



Position and lock adjusting handle so that adjusting screws are accessible.

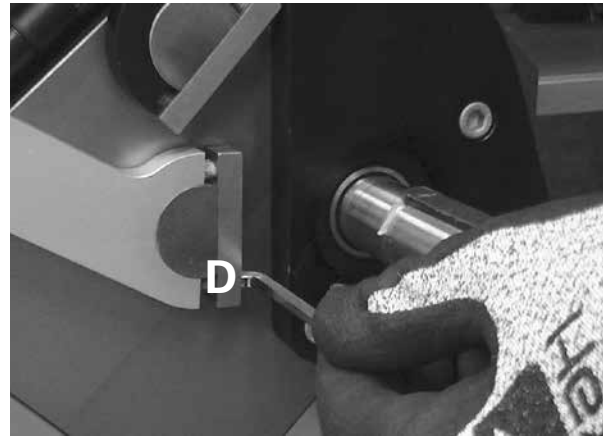
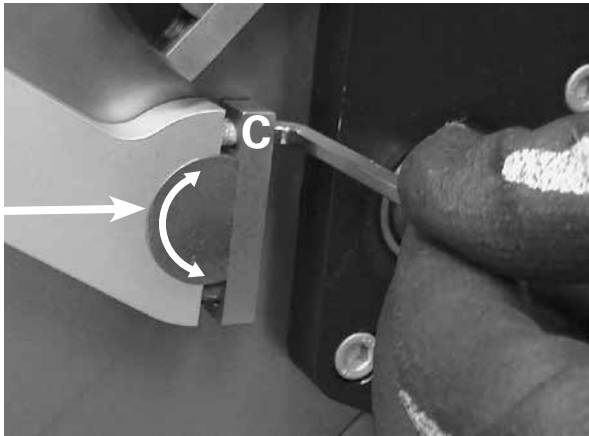
Ply 130™ Maintenance – Measure and Adjust Blade/Roller Clearance As Necessary

The purpose of the adjustment is to turn the eccentric shaft. It is important to turn, for both A and B, a recommended one quarter turn or less prior to rechecking with shims.

C15

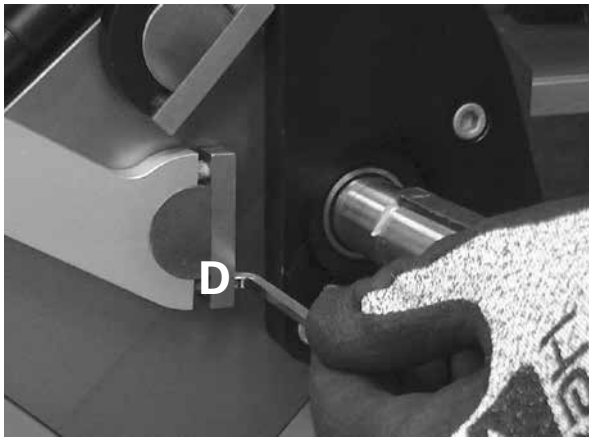
For increasing the clearance between the blade and the lower traction roller: using a 5 mm hex key to engage screws, loosen screw C counterclockwise one quarter turn and tighten screw D clockwise one quarter turn or until moderately tight.

**Eccentric
Shaft**



C16

To decrease the clearance between the blade and the lower traction roller: loosen screw D counterclockwise one quarter of a turn and tighten screw C clockwise one quarter turn or until moderately tight.



C17

Lock the adjusting handle back to 0. Check for clearance between the blade and lower traction roller by inserting the clearance shims. There should be little resistance as the operator slides the white shim between the blade and the lower traction roller and the black shim should not pass through between the blade and the lower traction roller. Repeat steps C14-C17 as necessary.

Ply 130™ Maintenance – Measure and Adjust Blade/Roller Clearance As Necessary

C18



Once adjustments have been made, reinstall the guard plate. Start by reinstalling the handle.

C19



Then reinstall the clamp nut.

C20



Reinstall motor. Align shaft key with key slot.

C21



Reassemble the motor to the frame placing the spacer between the motor torque arm and ply base. Insert 8 mm hex bolt with washer and tighten.



C22



Note: Ensure rubber grommet is in place prior to reassembly.

Parts Lists

Ply 130™ Ordering Information

Item Code	Ordering Number
08014	PLY-BL-BLADE-&-JIG-KIT
08490	PLY130-BLADE
08823	FUSE-GLASS-1.6-AMP
08824	FUSE-6.3-AMP
08826	SELECTOR-SWITCH-CH10
08831	PLY-FOOT-SWITCH
08846	FUSE-SIBA-189140-1.6-AMP
08836	FUSE-1.0-AMP
08837	FUSE-10-AMP
08838	FUSE-15-AMP
08839	TRANSFORMER-PLY130-115/230-24
08840	TRANSFORMER-PLY130-230/460-24
08841	REVERSE-CONTACTOR-KIT-1PH

Ply 130™ Step Cutter Ordering Information

Low Volume		High Volume	
Ordering Number	Item Code	Ordering Number	Item Code
PLY130-STEP CUT-RETROFIT	08499	PLY130-SNGL-STEP CUT-BLADE-KIT	08778
PLY130-STEP CUT	08501	PLY130-SNGL-STEP CUT-BLADE	08791
Optional Items			
PLY130-STEP CUT-BLADES (5)	08497		
PLY130-STEP CUT-GUIDE-EXT	08498		
PLY130-STEP CUT-TWRENCH	08500		

Technical Assistance

Contact Flexco's Customer Service if technical assistance or repair is needed: www.flexco.com



2525 Wisconsin Avenue • Downers Grove, IL 60515-4200 • USA
Tel: (630) 971-0150 • Fax: (630) 971-1180 • E-mail: info@flexco.com

Visit www.flexco.com for other Flexco locations and products.

©2018 Flexible Steel Lacing Company. 09/13/18. For reorder: X5248

