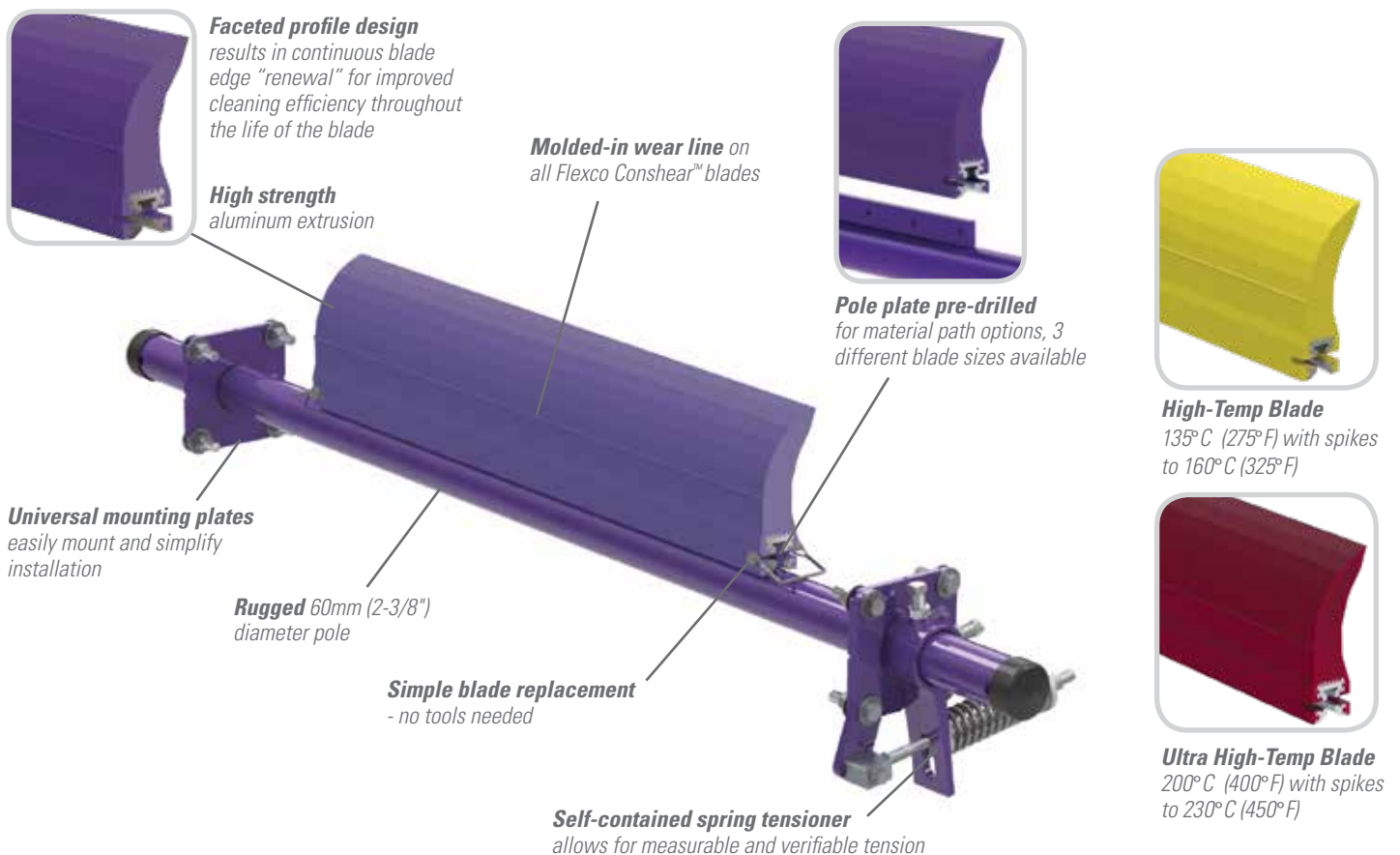


EZP1 Rockline® Standard-Duty Precleaner

Simple, Quick, Effective Belt Cleaning for Cement Operations

The EZP1 Precleaner is not your average solid-blade belt cleaner that mounts on the head pulley. It features a unique single blade design that combines simple, do-it-yourself installation, quick maintenance, and effective cleaning results with a price tag that you can afford. Install the EZP1 anywhere throughout the process where dust is widespread to facilitate the capture of usable material and avoid potential safety citations for hazardous piles. High-Temp and Ultra High-Temp blade options are available for belts carrying clinker.



Features and Benefits

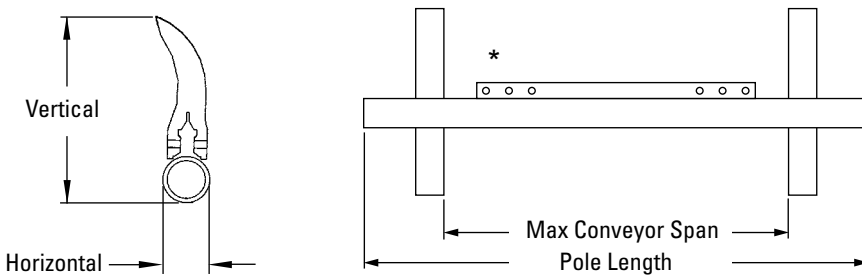
- **Works with Flexco mechanical splices.** The spring tensioner allows the blade to quickly move away from the belt when a splice passes. The polyurethane blade material easily glides over the splice without damage and with minimal cleaning disruption.
- **Compact, streamlined design.** The EZP1 Precleaner requires only 100mm (4") of horizontal clearance for correct installation. Its streamlined contours prevent material buildup on the blade or the pole.
- **Can be used on reversing belts.** Installing cleaners on both pulleys gives superior cleaning results on belts that run in both directions.
- **Fits most conveyor structures.** Available for belt widths from 300 to 1800mm (12" to 72").
- **Blade can be used on other cleaners.** The ConShear™ blade can be used as a replacement blade on many OEM cleaners.

EZP1

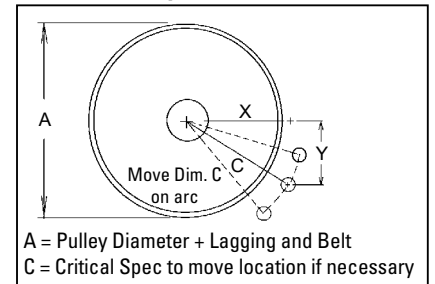
Rockline® Standard-Duty Precleaner

Specifications and Guidelines

- Maximum Belt Speed**
3.5 M/sec (700 FPM)
- Temperature Rating**
Purple: -35°C to 82°C (-30°F to 180°F)
Yellow: -35°C to 135°C (-30°F to 275°F)
Spikes to 160°C (325°F)
Red: -35°C to 200°C (-30°F to 400°F)
Spikes to 230°C (450°F)
- Minimum Pulley Diameter**
250mm (10")
- Blade Height**
185mm (7-1/4")
- Usable Blade Wear Length**
100mm (4")
- Blade Material**
Purple: Polyurethane 83 durometer
Yellow: Polyurethane 93 durometer
Red: Ultra High-Temp Polyurethane 90 durometer
(proprietary blends for abrasion resistance and long wear)
- CEMA Cleaner Rating**
Class 3
- Available for Belt Widths**
300 to 1800mm (12" to 72")
- Horizontal Clearance Required**
100mm (4")
- Vertical Clearance Required**
238mm (9-1/2")
- Pole Length**
Cleaner size up to 1200mm (48")
+ 750mm (30")
Cleaner size over 1200mm (48")
+ 850mm (34")
- Maximum Conveyor Span**
Cleaner size up to 1200mm (48")
+ 625mm (25")
Cleaner size over 1200mm (48")
+ 725mm (29")



Pole Location Specs



Ordering Information - EZP1 Belt Cleaners

Belt Width	Blade Coverage		EZP1 with Purple Blade				EZP1 with Yellow HT Blade				EZP1 with Red UHT Blade						
	-2" (50mm) Coverage		-8" (200mm) Coverage		BW - 50mm (2")		BW - 200mm (8")		BW - 50mm (2")		BW - 200mm (8")		BW - 50mm (2")		BW - 200mm (8")		
mm	in.	mm	in.	mm	in.	Ordering Number	Item Code	Ordering Number	Item Code	Ordering Number	Item Code	Ordering Number	Item Code	Ordering Number	Item Code	Ordering Number	Item Code
300	12	250	10	-	-	EZP1-212	75610	N/A	N/A	HTF212	76658	N/A	N/A	EZP1-UHT212	91226	N/A	N/A
450	18	400	16	250	10	EZP1-218	75611	EZP1-818	75779	HTF218	76659	HTF818	90817	EZP1-UHT218	91227	EZP1-UHT818	91236
600	24	550	22	400	16	EZP1-224	75612	EZP1-824	75780	HTF224	76660	HTF824	90818	EZP1-UHT224	91228	EZP1-UHT824	91237
750	30	700	28	550	22	EZP1-230	75613	EZP1-830	75781	HTF230	76661	HTF830	90819	EZP1-UHT230	91229	EZP1-UHT830	91238
900	36	850	34	700	28	EZP1-236	75614	EZP1-836	75782	HTF236	76662	HTF836	90820	EZP1-UHT236	91230	EZP1-UHT836	91239
1050	42	1000	40	850	34	EZP1-242	75615	EZP1-842	75783	HTF242	76663	HTF842	90821	EZP1-UHT242	91231	EZP1-UHT842	91240
1200	48	1150	46	1000	40	EZP1-248	75616	EZP1-848	75784	HTF248	76664	HTF848	90822	EZP1-UHT248	91232	EZP1-UHT848	91241
1350	54	1300	52	1150	46	EZP1-254	75617	EZP1-854	75785	HTF254	76665	HTF854	90823	EZP1-UHT254	91233	EZP1-UHT854	91242
1500	60	1450	58	1300	52	EZP1-260	75618	EZP1-860	75786	HTF260	76666	HTF860	90824	EZP1-UHT260	91234	EZP1-UHT860	91243
1800	72	1750	70	1600	64	EZP1-272	75771	EZP1-872	75774	HTF272	76667	HTF872	90825	EZP1-UHT272	91235	EZP1-UHT872	91244

Pole Location Chart				
A	X	Y	C	
250	74	230	242	
275	92	230	248	
300	108	230	254	
325	131	230	265	
350	146	230	273	
375	166	230	284	
400	179	230	291	
425	195	230	301	
450	207	230	309	
500	235	230	329	
525	249	230	339	
550	266	230	352	
575	283	230	365	
600	299	230	377	
625	314	230	390	
650	330	230	402	
675	346	230	415	
700	360	230	427	
725	374	230	439	
775	389	230	452	
775	403	230	464	
825	417	230	477	
825	432	230	489	
850	446	230	501	
875	460	230	514	
900	474	230	526	

ConShear Replacement Blades

Blade Width	Purple Blades		Yellow HT Blades		Red UHT Blades		
	Ordering Number	Item Code	Ordering Number	Item Code	Ordering Number	Item Code	
mm	in.						
250	10	CRB10	75628	CRB-HT10	76593	CRB-UHT10	91253
400	16	CRB16	75629	CRB-HT16	76594	CRB-UHT16	91254
550	22	CRB22	75630	CRB-HT22	76595	CRB-UHT22	91255
700	28	CRB28	75631	CRB-HT28	76596	CRB-UHT28	91256
850	34	CRB34	75632	CRB-HT34	76597	CRB-UHT34	91257
1000	40	CRB40	75633	CRB-HT40	76598	CRB-UHT40	91258
1150	46	CRB46	75634	CRB-HT46	76599	CRB-UHT46	91259
1300	52	CRB52	75635	CRB-HT52	76600	CRB-UHT52	91260
1450	58	CRB58	75636	CRB-HT58	76601	CRB-UHT58	91261
1600	64	CRB64	75775	CRB-HT64	76602	CRB-UHT64	91262
1750	70	CRB70	75773	CRB-HT70	76603	CRB-UHT70	91263



Standard



High-Temp



Ultra High-Temp

Authorised Distributor: