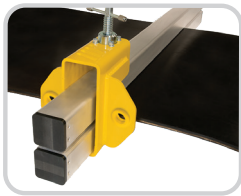




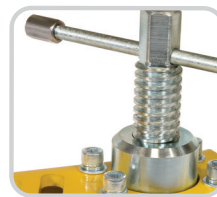
## TUG™ HD® Belt Clamps

# Ultimate Grip and Superior Strength Combine to Secure the Belt

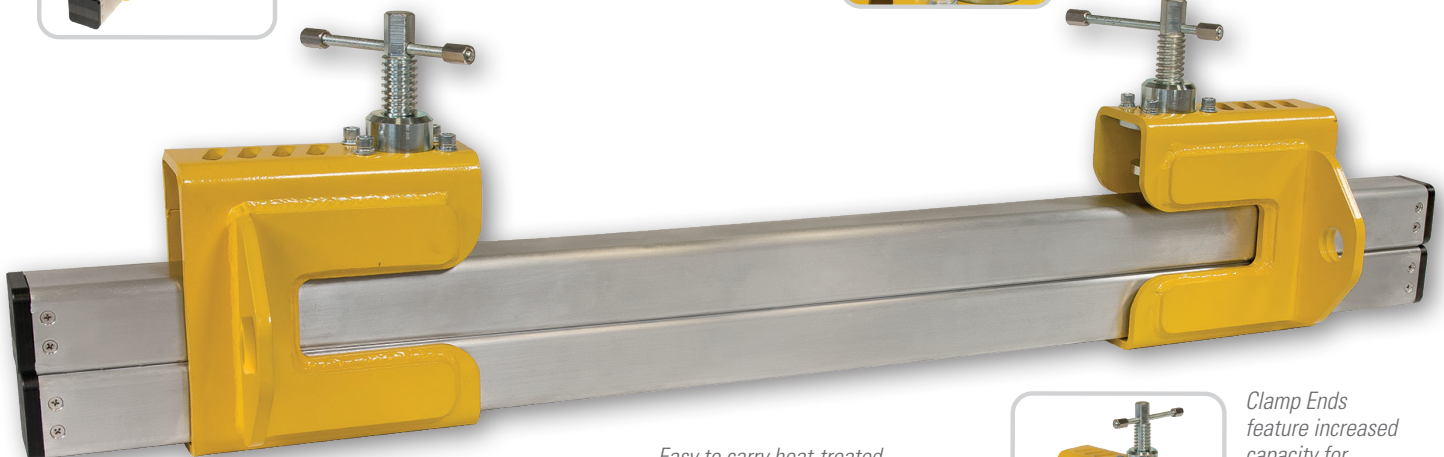
Flexco's TUG™ HD® Belt Clamps are engineered to compensate for any belt slip that may occur when applying tension to a belt on a conveyor system. By doing so, this product will ensure that the risk of belt slip during maintenance works is minimised, so you can make certain your maintenance crew is safe at work. On top of this, Flexco has ensured a safety factor of 3:1 for every component of the belt clamps. Flexco understands that worker safety is a top priority when repairing belts carrying larger loads. Flexco TUG™ HD® Belt Clamps are designed to secure the belt for belt repair meeting the most stringent safety test standards.



*Clamps over the belt for greater strength*



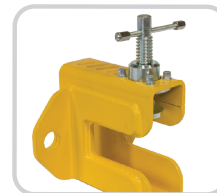
*Acme thread offers superior grip strength and allow operators the chance to slowly release the belt after maintenance*



*Extruded non-slip grip pattern on aluminum bars provides ultimate holding power*



*Easy to carry heat-treated aluminum clamp bars*



*Clamp Ends feature increased capacity for easier clamp bar insertion and weigh less than 13 kg each*

### Features and Benefits:

- **Safety first.** Specifically engineered to combat belt slip, as well as holding a 3:1 safety rating on all componentry.
- **Tried and Tested:** Third-party tested. Safety factors of clamp ratings meet or exceed industry standards.
- **Easy belt maintenance.** A single pair can be used to block off belt for maintenance.
- **Belt versatility.** Can be used on multiple conveyor belting types including flat, sidewall, chevron, and other specialty profiles.
- **Engineered for tough conditions.** Designed with high-grade aluminum bars and structural steel clamp ends. Shock absorbing end caps are designed to protect the bars from hammer use and drops.
- **Easy on-site identification.** Clamp labels are color-coded blue for 6 Tonne and black for 8 Tonne.

# TUG™ HD® Belt Clamps

## TUG™ HD® Belt Clamps Specifications

Version	Maximum Belt Thickness	Clamp Screw Torque	Rated Load Capacity
TUG6	50 mm	270 N-m	6 Metric Tonnes
TUG8	55 mm	270 N-m	8 Metric Tonnes

Note: 32 mm maximum belt thickness when using TUG6E clamp ends with Far-Pul™ HD® bars.

## TUG™ HD® Belt Clamps COMPLETE Ordering Information

Belt Width	Ordering Number		TUG6 Weight	TUG8 Weight
mm	6 Tonne	8 Tonne	kgs.	kgs.
Up to 900	TUG6-36-AL	TUG8-36-AL	61	81
Up to 1050	TUG6-42-AL	TUG8-42-AL	64	86
Up to 1200	TUG6-48-AL	TUG8-48-AL	67	91
Up to 1400	TUG6-54-AL	TUG8-54-AL	70	96
Up to 1600	TUG6-60-AL	TUG8-60-AL	73	101
Up to 1800	TUG6-72-AL	TUG8-72-AL	80	111

Note: A complete set of TUG™ HD® Belt Clamps includes four aluminum clamp bars and four steel clamp ends. Contact customer service for information on steel bars.

## TUG™ HD® Belt Clamps PAIR Ordering Information

Belt Width	Ordering Number		TUG6 Weight	TUG8 Weight
mm	6 Tonne	8 Tonne	kgs.	kgs.
Up to 900	TUG6P-36-AL	TUG8P-36-AL	30	40
Up to 1050	TUG6P-42-AL	TUG8P-42-AL	32	43
Up to 1200	TUG6P-48-AL	TUG8P-48-AL	34	45
Up to 1400	TUG6P-54-AL	TUG8P-54-AL	35	48
Up to 1600	TUG6P-60-AL	TUG8P-60-AL	37	50
Up to 1800	TUG6P-72-AL	TUG8P-72-AL	40	55

Note: A pair of TUG™ HD® Belt Clamps includes two aluminum clamp bars and two steel clamp ends. Contact customer service for information on steel bars.

## TUG™ HD® Belt Clamps REPLACEMENT BARS PAIR Ordering Information

Belt Width	Ordering Number		TUG6 Weight	TUG8 Weight
mm	6 Tonne	8 Tonne	kgs.	kgs.
300	TUG6B-12-AL	TUG8B-12-AL	3	5
Up to 900	TUG6B-36-AL	TUG8B-36-AL	10	15
Up to 1050	TUG6B-42-AL	TUG8B-42-AL	11	17
Up to 1200	TUG6B-48-AL	TUG8B-48-AL	13	20
Up to 1400	TUG6B-54-AL	TUG8B-54-AL	14	22
Up to 1600	TUG6B-60-AL	TUG8B-60-AL	16	25
Up to 1800	TUG6B-72-AL	TUG8B-72-AL	19	30

Note: A replacement complete set of TUG™ HD® Belt Clamps includes two aluminum clamp bars. Contact customer service for information on steel bars.

## TUG™ Replacement Clamp End

Ordering Number	Weight
	kgs.
TUG6E	10
TUG8E	13

Note: Includes one Steel Clamp End

## Aluminum Content

Aluminum Alloy Type	Percent	
	Mg Magnesium	Ti Titanium
6061	1.00%	0%

## Belt Slip Safety Factor Matrix

The below matrix will determine the amount of clamps needed for each application, dependent on the safety factor required by your site in relation to the belt load.

TUG 6	Belt-Load. (kg)	Aluminum					Belt-Load. (kg)	Steel				
		Client's Selected Belt Slip Safety Factor						Client's Selected Belt Slip Safety Factor				
		1:01	2	3	4	5		1	2	3	4	5
	1000	1	1	1	1	1	1000	1	1	1	1	1
	2000	1	1	1	1	1	2000	1	1	1	1	2
	3000	1	1	1	1	2	3000	1	1	2	2	2
	4000	1	1	1	2	2	4000	1	1	2	2	3
	5000	1	1	2	2	3	5000	1	2	2	3	3
	6000	1	1	2	2	3	6000	1	2	3	3	4
TUG 8	Belt-Load. (kg)	Client's Selected Belt Slip Safety Factor					Belt-Load. (kg)	Client's Selected Belt Slip Safety Factor				
		1	2	3	4	5		1	2	3	4	5
	1000	1	1	1	1	1	1000	1	1	1	1	1
	2000	1	1	1	1	1	2000	1	1	1	1	1
	3000	1	1	1	1	1	3000	1	1	1	2	2
	4000	1	1	1	1	2	4000	1	1	2	2	2
	5000	1	1	1	2	2	5000	1	1	2	2	3
	6000	1	1	2	2	2	6000	1	2	2	3	3
	7000	1	1	2	2	3	7000	1	2	2	3	4
	8000	1	1	2	2	3	8000	1	2	3	3	4

\* For belt widths up to and including 1800 mm

\* All advertised components have a safety factor of 3:1

Authorised Distributor:

Flexco (Aust.) Pty. Ltd • 10 Solent Circuit, Norwest • NSW, Australia, 2153 • Australia  
Tel: 612-8818-2000 • Fax: 612-8824-6333 • E-mail: salesau@flexco.com

Visit [www.flexco.com](http://www.flexco.com) for other Flexco locations and products.

©2017 Flexible Steel Lacing Company. 06-03-20. For reorder: X4654

