

---

# Novitool® Aero® Splice Press Recipe Management Tool Instruction Manual

---



Patent number: US 9,090,022 B1 and other Patents Pending

---

# Table of Contents

Important Things to Note Prior to Getting Started..... 3

Getting Started..... 3

Enter Group Names ..... 4

Create a Recipe ..... 6

Modify an Existing Recipe ..... 7

Managing Recipe Ordering Within Groups ..... 8

Make Recipe File ..... 8

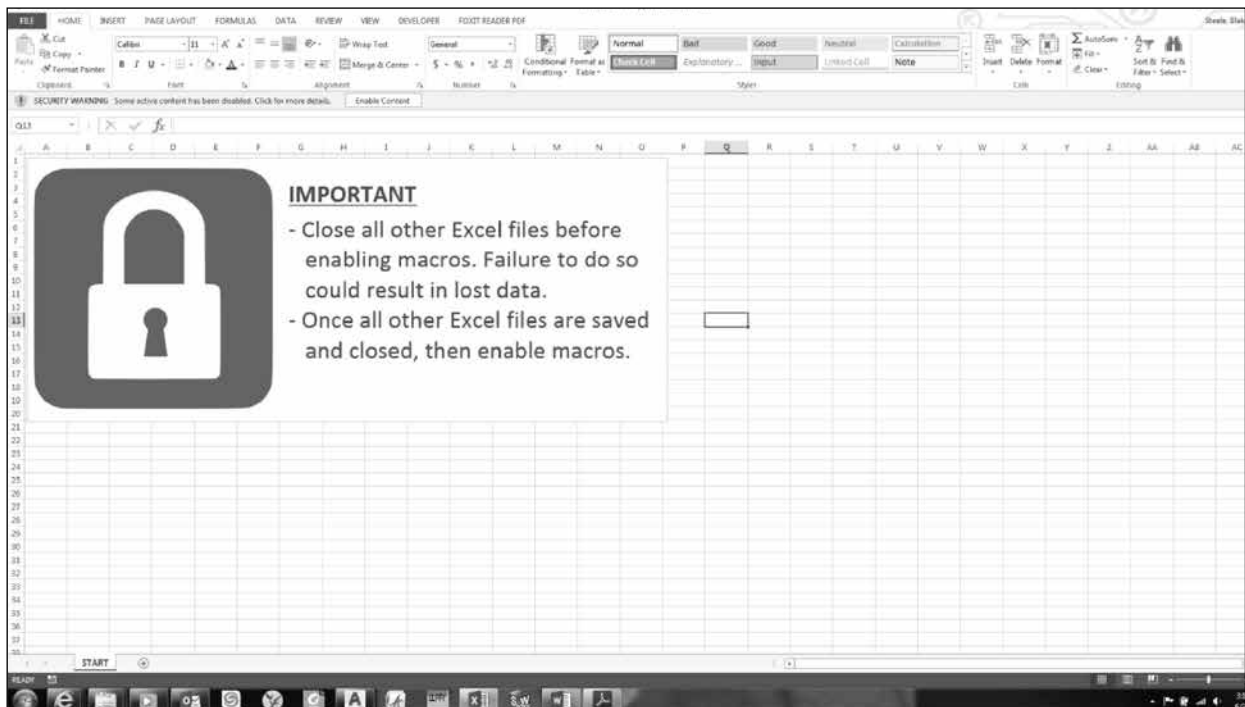
Loading Recipes from Aero® Recipe Management Tool ..... 8

Saving Recipes From Press to USB Flash Drive ..... 10

Import Recipes Into Aero® Recipe Management Tool..... 10

# Important Things to Note Prior to Getting Started

- The Aero® Recipe Management Tool is comprised of three important files (ARMTx.x.x.xlsm, recipesImport.csv, recipesExport.csv). All three must be stored either on the same USB flash drive or within the same file folder.
- To work properly, all Excel files must be closed prior to using the tool. If you fail to close the file prior to launching the tool it will automatically save any work you have done in your named files and close them. If you have work in a file that is not saved with a name it will prompt you to save the file.
- You must 'enable macros' when opening the file. You will be prompted.



## Getting Started

1. Insert USB flash drive into computer
2. Initial screen will advise Instructions:
  - Close any open Excel documents
  - Enable macros prior to using Aero Recipe Management Tool

# Enter Group Names



1. Select “Enter Group Names”

2. Important things to note about group names:

- Prior to entering group names, consider how you would like to organize your recipes (i.e. by belt type, by manufacturer, other).
- You can organize up to 10 groups on the computer (Group1 – Group10).
- Recipes in Group1-10 are only editable within the Aero Recipe Management Tool (not editable directly on the press).

## Novitool® Aero® Recipe Management Tool

---

- Group0 recipes are entered and stored directly on the press.
- A recipe from Group1-10 can be edited at the press, but only saved to Group0.
- Groups must be entered in sequential order.
- Fifteen alphanumeric characters may be used including a hyphen (-).
- Before entering additional groups the new group name must have at least one stored recipe.
- Each group can store up to 99 recipes.
- To delete ALL recipes within a group, click on the “Delete All Recipes in GroupX” button. Deleting a group will shift all remaining groups up one position (i.e. if you delete group 8 and have recipes in group 9 and 10 then these will shift to group 8 and 9). **Therefore, it is important to give careful consideration to the actual recipe name and not rely on the group and recipe number, as these can shift as you continue to manage your recipes.**

**FLEXCO**

Enter group names. Must have a group entered before entering any recipes.

Group1	PVC	Delete All Recipes in Group1
Group2		Delete All Recipes in Group2
Group3		Delete All Recipes in Group3
Group4		Delete All Recipes in Group4
Group5		Delete All Recipes in Group5
Group6		Delete All Recipes in Group6
Group7		Delete All Recipes in Group7
Group8		Delete All Recipes in Group8
Group9		Delete All Recipes in Group9
Group10		Delete All Recipes in Group10

Enter A New Recipe      Back To HomePage

3. Enter recipe group name into Group1. All groups must have a minimum of 1 recipe stored. Go to step C for recipe storage instructions. After one recipe is stored you may return to enter Group2.
4. Select “Enter a New Recipe” or “Back to HomePage”



# Create a Recipe

**FLEXCO** Metric Imperial

Group:  Choose Existing Group

Recipe Name:  Enter a Recipe Name 1-15 Characters (Alpha/Numeric)

Top Splice Temperature:  Enter Top Splice Temperature 100° - 200°C, 1°C Increments

Bottom Splice Temperature:  Enter Bottom Splice Temp. 100° - 200°C, 1°C Increments

Splice Dwell Time:  M  S Choose Time 0 - 10 Minutes

Pressure:  Enter Pressure 0.1 - 2.0 Bar, 0.1 Bar Increments

Preheat On / Off:  Off  On Choose On or Off

Preheat Temperature:  Enter Preheat Temperature 50° - 90% of Lowest Splice Temp (Top/Bottom), 1°C Increments

Preheat Dwell Time:  M  S Choose Preheat Dwell Time 30 Seconds - 10 Minutes

Cool Down Temperature:  Enter Cool Down Temperature 50° - 100°C, 1°C Increments

Notes:  Enter any notes about the recipe, belt, etc. Notes will not appear on press

All fields must be filled in before saving is allowed.

**Create/Save Recipe** **Save Recipe As Copy** **Clear All Fields** **Modify Existing Recipe** **Back To HomePage**

## 1. Select Metric or Imperial

**FLEXCO** Metric Imperial

Group:  Choose Existing Group

Recipe Name:  Enter a Recipe Name 1-15 Characters (Alpha/Numeric)

Top Splice Temperature:  Enter Top Splice Temperature 100° - 200°C, 1°C Increments

Bottom Splice Temperature:  Enter Bottom Splice Temp. 100° - 200°C, 1°C Increments

Splice Dwell Time:  M  S Choose Time 0 - 10 Minutes

Pressure:  Enter Pressure 0.1 - 2.0 Bar, 0.1 Bar Increments

Preheat On / Off:  Off  On Choose On or Off

Preheat Temperature:  You Must Enter A Temperature Between 50° - 149°C, 1° Increments

Preheat Dwell Time:  M  S Choose Preheat Dwell Time 30 Seconds - 10 Minutes

Cool Down Temperature:  Enter Cool Down Temperature 50° - 100°C, 1°C Increments

Notes:  Enter any notes about the recipe, belt, etc. Notes will not appear on press

All fields must be filled in before saving is allowed.

**Create/Save Recipe** **Save Recipe As Copy** **Clear All Fields** **Modify Existing Recipe** **Back To HomePage**

## 2. Select Group Name

3. Enter Recipe Name: Up to 15 alphanumeric characters and hyphen (-). Note: Carefully consider the recipe name, as this should be your primary reference to retrieve the recipe. Both Group Number and Recipe Numbers can change during the recipe management. Do NOT duplicate names for multiple recipe settings.
4. Enter Top Splice Temperature
5. Enter Bottom Splice Temperature
6. Enter Splice Dwell Time
7. Enter Pressure
8. Select Preheat On/Off
  - If choose 'On':
    - ▷ Enter Preheat Temperature
    - ▷ Enter Preheat Dwell Time
9. Cool Down Temperature: Enter a value within range specified
10. Notes: Notes may be entered to be viewed at the external computer. Notes will not appear on the press. This is not a mandatory field.
11. Once all fields have been entered the "Create/Save Recipe" button becomes available. Click "Create/Save Recipe", then confirm to save. Advises Save Successful.

**Note:** Recipe numbers are generated by the Aero Recipe Management Tool and will be assigned behind the scenes. Each Group is limited to 99 recipes. If Group already has 99 saved recipes an error message will pop up.
12. Click "Back to HomePage" to select next step.

## Modify an Existing Recipe

1. Click "Modify Recipe" button
2. Screen will display all saved recipes and will order them by Group Names and Recipe Numbers.
3. Select the recipe that you would like to modify. Recipe will be highlighted in blue. Click 'Edit Recipe'.
4. Make edits to recipe.
  - To overwrite existing recipe click 'Create/Save Recipe'
  - To create a new recipe with these modifications, click 'Save Recipe As Copy'. This will create a new recipe file. Please note that it is highly recommended to change the recipe name also, otherwise you can have multiple recipe settings with the same name.

## **Managing Recipe Ordering Within Groups**

Sometimes it is preferred to change the order of the recipe numbers within a group.

1. Click on the recipe that you would like to change the order. It will be highlighted in blue.
2. Select the Up button to move the recipe up one position or the Down button to move it down one position. Up10 and Down10 buttons are available to speed this process when moving significant positions. Please note that as you move the recipes all recipes within the group will assume a new recipe number.

## **Make Recipe File**

“Make a Recipe File” creates the recipeImport.csv file that loads the recipes from Group1-Group10 to the press.

1. Click “Make Recipe File”
2. Message states recipe “File Created Successfully”
3. Click “Ok”
4. Aero Recipe Management Tool has automatically created the “recipesImport.csv” file within same folder location that the Aero Recipe Management Tool is stored. If the file is stored on your computer, transfer recipesImport.csv file to a USB flash drive.

## **Loading Recipes from Aero® Recipe Management Tool**



1. Follow instructions on powering up the press, then insert USB flash drive into the USB port in the top of the press.



## Novitool® Aero® Recipe Management Tool

---



2. Display reads USB Device Detected with options to select “Export Data Log”, “Import Recipes”, “Export Recipes”, and “Back”. Scroll to “Import Recipes” and depress selector knob. Select “Cancel or Confirm.”

- If “Cancel” is selected, it will return to Options menu.
- If “Confirm” is selected, the display states “Processing”.



3. Once complete display reads “Import complete”. Select “Return” or “Undo”. “Return” brings you back to “Options” where you can scroll down to “Back to Home”. At end of updating recipes the USB flash drive may be removed.

- “Undo” allows you to remove the USB flash drive without making recipe updates.
- In addition to internal recipes, third parties, like conveyor belt manufacturers might develop splice recipes for their range of belts. These external recipes can be imported into the Aero Recipe Management Tool.
- If you have multiple presses at your facilities, you can load Group 1-10 recipes on multiple presses.

## Saving Recipes From Press to USB Flash Drive

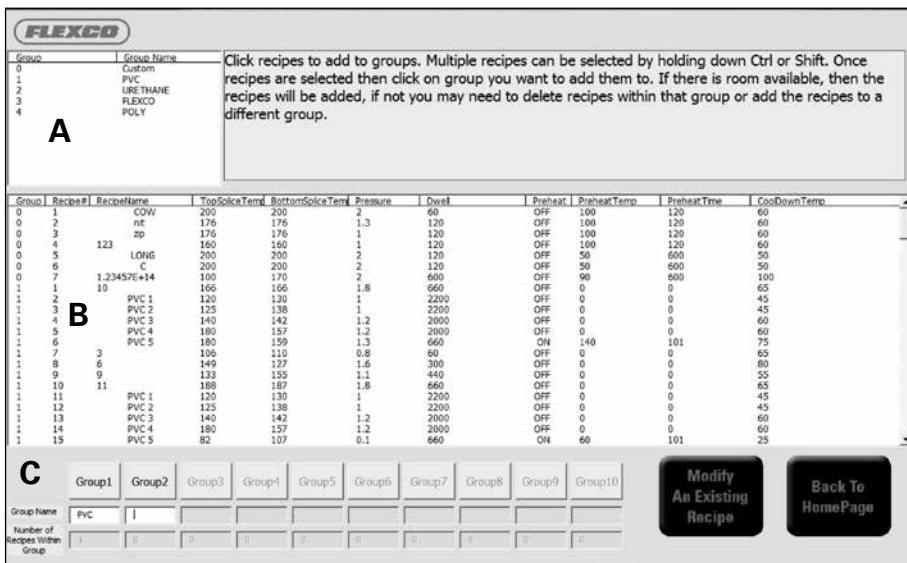
This function is to copy Group 0-10 recipes from the press to a USB flash drive.

1. Plug USB flash drive into USB port on press
2. Display reads USB Device Detected
3. Choose Export Recipes
4. Then choose Back which takes you back to Home
5. Remove USB flash drive

## Import Recipes Into Aero® Recipe Management Tool

This feature allows for recipes to be imported from another source into your Aero Recipe Management Tool into existing or new groups.

1. Insert USB flash drive into computer. The “recipesExport.csv” file from the USB must be in the same location as the Aero Recipe Management software (ARMT.x.x.x.xlsm). Move this file, if necessary.



2. Click “Import Recipes” button

- There are three sections to this screen:
  - ▷ Key for Group Number and Group Name of imported file – only Group Number is shown in section B (This is shown in part “A” in image above)
  - ▷ Display of available recipes for import (This is shown in part “B” in image above)
  - ▷ Your current recipe groups (This is shown in part “C” in image above)

## Novitool® Aero® Recipe Management Tool

---

3. Highlight the recipe(s) you would like to import from section B. Multiple recipes can be selected by holding down Ctrl or Shift.
4. Click on the group in section C where you want to save the recipe. For your reference, the group name and number of recipes within the group will be displayed directly below the group number.

**Notes:**

- Each group can store up to 99 recipes. You will receive an error message if attempting to store more than 99 recipes within a group.
  - Group Name in section C can be modified on this screen. All recipes within this modified group name will now reference the new name.
  - A group must have recipes within it before the next group becomes available. Groups that are gray shaded are not available for entry until the prior group has content.
5. Once all desired recipes have been imported, click “Back To HomePage”. Recipe file can then be created for transfer back to the press by following instructions noted earlier in Loading Recipes and Saving Recipes.



Unit 7 Kingsmark Freeway • Oakenshaw • Bradford, BD12 7HW • United Kingdom  
Tel: +44-1274-600-942 • Fax: +44-1274-673-644 • Email: sales@flexco.co.uk

Visit [www.flexco.com](http://www.flexco.com) for other Flexco locations and products.

©2016 Flexible Steel Lacing Company. 08-05-16. For reorder: X4289

