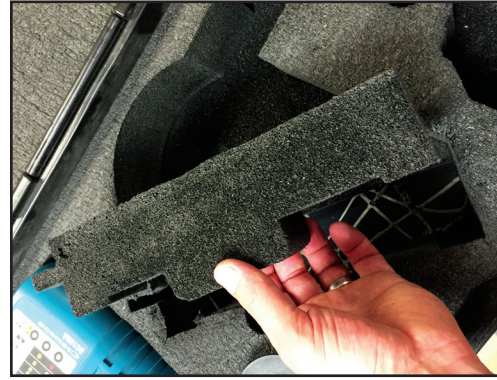


# How To Modify Your C/EBC Case To Accommodate The Cutter With The Rail/Guide System

If you have an older, black plastic case (Shown with a CEBC1)



**Step 1.** Remove the cutter. You will see a “raised” foam insert member which the current rail system rests on. Remove that piece. There may be some light adhesive on the bottom of it which secures it in place.



**Step 2.** Take an Exacto knife or extendable razor knife and decrease the thickness of that foam insert by 1/2.

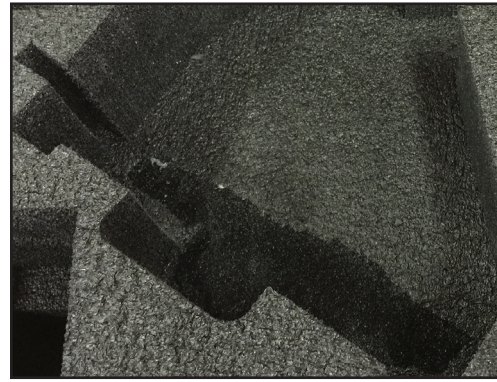
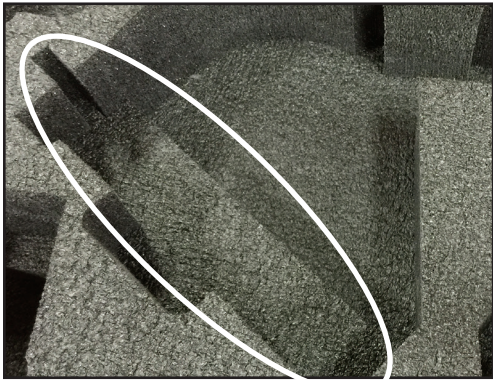


**Step 3.** Replace the modified foam insert back in its original place.

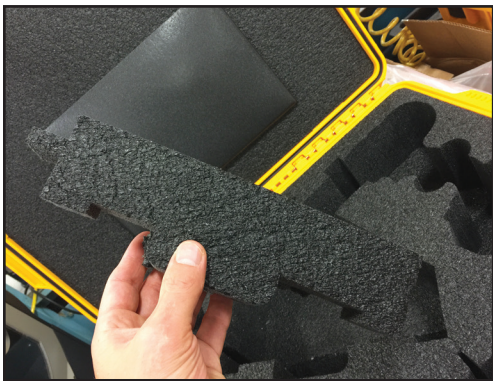


**Step 4.** Replace CEBC cutter.

If you have a newer, yellow Pelican case (Shown with a CEBC1)



**Step 1.** Remove the cutter. You will see a “raised” foam insert member which the current rail system rests on. Remove that piece. There may be some light adhesive on the bottom of it which secures it in place.



**Step 2.** Discard that piece. You will not need it any longer.



**Step 3.** Replace CEBC cutter.