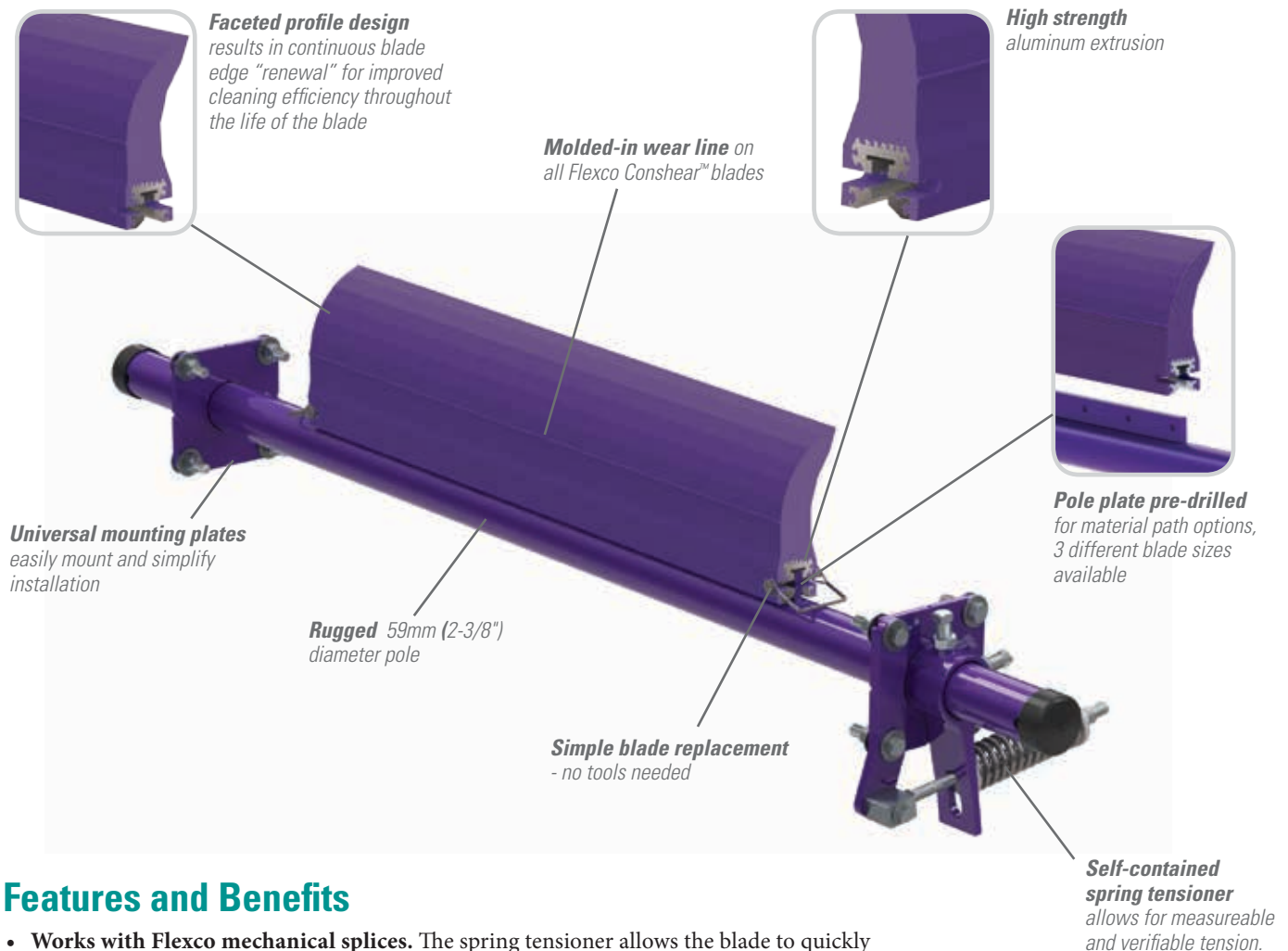


EZP1 Rockline® Standard-Duty Precleaner

Simple, Quick, Effective

The EZP1 Precleaner is not your average solid-blade belt cleaner that mounts on the head pulley. It features a unique uni-blade design that combines simple, do-it-yourself installation, quick maintenance, and effective cleaning results with a price tag that you can afford.



Features and Benefits

- **Works with Flexco mechanical splices.** The spring tensioner allows the blade to quickly move away from the belt when a splice passes. The polyurethane blade material easily glides over the splice without damage and with minimal cleaning disruption.
- **Compact, streamlined design.** The EZP1 Precleaner requires only 100mm (4") of horizontal clearance for correct installation. Its streamlined contours prevent material buildup on the blade or the pole.
- **Can be used on reversing belts.** Installing cleaners on both pulleys gives superior cleaning results on belts that run in both directions.
- **Fits most conveyor structures.** Available for belt widths from 300 -1800mm (12" - 72").
- **Blade can be used on other cleaners.** The Conshear™ blade can be used as a replacement blade on many OEM cleaners.

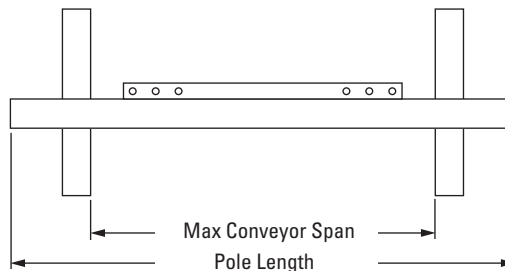
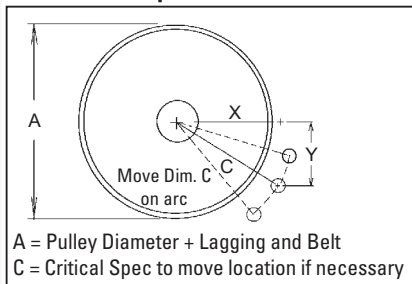
EZP1

Rockline® Standard-Duty Precleaner

Specifications and Guidelines

- **Maximum Belt Speed**
3.5 M/sec (700 FPM)
- **Temperature Rating**
-35°C to 82°C (-30°F to 180°F)
- **Minimum Pulley Diameter**
250mm (10")
- **Blade Height**
185mm (7-1/4")
- **Usable Blade Wear Length**
100mm (4")
- **Blade Material**
Polyurethane 83 durometer (proprietary blend for abrasion resistance and long wear)
- **Available for Belt Widths**
300 to 1800mm (12" to 72")
- **Horizontal Clearance Required**
100mm (4")
- **Vertical Clearance Required**
238mm (9-1/2")
- **Pole Length**
Cleaner size up to 1200mm (48") + 750mm (30")
Cleaner size over 1200mm (48") + 850mm (34")
- **Maximum Conveyor Span**
Cleaner size up to 1200mm (48") + 625mm (25")
Cleaner size over 1200mm (48") + 725mm (29")

Pole Location Specs



Pole Location Chart

| A | X | Y | C | A | X | Y | C | A | X | Y | C |
|-----|-----|-----|-----|-----|-----|-----|-----|-----|-----|-----|-----|
| 250 | 74 | 230 | 242 | 500 | 235 | 230 | 329 | 725 | 374 | 230 | 439 |
| 275 | 92 | 230 | 248 | 525 | 249 | 230 | 339 | 775 | 389 | 230 | 452 |
| 300 | 108 | 230 | 254 | 550 | 266 | 230 | 352 | 775 | 403 | 230 | 464 |
| 325 | 131 | 230 | 265 | 575 | 283 | 230 | 365 | 825 | 417 | 230 | 477 |
| 350 | 146 | 230 | 273 | 600 | 299 | 230 | 377 | 825 | 432 | 230 | 489 |
| 375 | 166 | 230 | 284 | 625 | 314 | 230 | 390 | 850 | 446 | 230 | 501 |
| 400 | 179 | 230 | 291 | 650 | 330 | 230 | 402 | 875 | 460 | 230 | 514 |
| 425 | 195 | 230 | 301 | 675 | 346 | 230 | 415 | 900 | 474 | 230 | 526 |
| 450 | 207 | 230 | 309 | 700 | 360 | 230 | 427 | | | | |

Ordering Information

| Belt Width | | Blade Coverage | | Ordering Number | Item Code |
|------------|-----|----------------|-----|-----------------|-----------|
| mm | in. | mm | in. | | |
| 300 | 12 | 250 | 10 | EZP1-300-50 | 81090 |
| 450 | 18 | 400 | 16 | EZP1-450-50 | 81091 |
| 600 | 24 | 550 | 22 | EZP1-600-50 | 81092 |
| 750 | 30 | 700 | 28 | EZP1-750-50 | 81093 |
| 900 | 36 | 850 | 34 | EZP1-900-50 | 81094 |
| 1050 | 42 | 1000 | 40 | EZP1-1050-50 | 81095 |
| 1200 | 48 | 1150 | 46 | EZP1-1200-50 | 81096 |
| 1350 | 54 | 1300 | 52 | EZP1-1350-50 | 81097 |
| 1500 | 60 | 1450 | 58 | EZP1-1500-50 | 81098 |
| 1800 | 72 | 1750 | 70 | EZP1-1800-50 | 81099 |

| Belt Width | | Blade Coverage | | Ordering Number | Item Code |
|------------|-----|----------------|-----|-----------------|-----------|
| mm | in. | mm | in. | | |
| 300 | 12 | - | - | EZP1-450-200 | 81100 |
| 450 | 18 | 250 | 10 | EZP1-600-200 | 81101 |
| 600 | 24 | 400 | 16 | EZP1-750-200 | 81102 |
| 750 | 30 | 550 | 22 | EZP1-900-200 | 81103 |
| 900 | 36 | 700 | 28 | EZP1-1050-200 | 81104 |
| 1050 | 42 | 850 | 34 | EZP1-1200-200 | 81105 |
| 1200 | 48 | 1000 | 40 | EZP1-1350-200 | 81106 |
| 1350 | 54 | 1150 | 46 | EZP1-1500-200 | 81107 |
| 1500 | 60 | 1300 | 52 | EZP1-1800-200 | 81108 |
| 1800 | 72 | 1600 | 64 | EZP1-1800-200 | 81108 |

| Blade Width | | Ordering Number | Item Code |
|-------------|-----|-----------------|-----------|
| mm | in. | | |
| 250 | 10 | CRB 250 | 76582 |
| 400 | 16 | CRB 400 | 76583 |
| 550 | 22 | CRB 550 | 76584 |
| 700 | 28 | CRB 700 | 76585 |
| 850 | 34 | CRB 850 | 76586 |
| 1000 | 40 | CRB 1000 | 76587 |
| 1150 | 46 | CRB 1150 | 76588 |
| 1300 | 52 | CRB 1300 | 76589 |
| 1450 | 58 | CRB 1450 | 76590 |
| 1600 | 64 | CRB 1600 | 76591 |
| 1750 | 70 | CRB 1750 | 76592 |

Authorized Distributor:

236 Albert Amon Rd • Meadowdale Ext. 7 • Germiston 1614 • South Africa
Tel: +27-11-608-4180 • Fax: +27-11-454-5821 • E-mail: flexco@flexco.co.za

Visit www.flexco.com for other Flexco locations and products.

©2015 Flexible Steel Lacing Company. 07/15. For reorder: X3955

