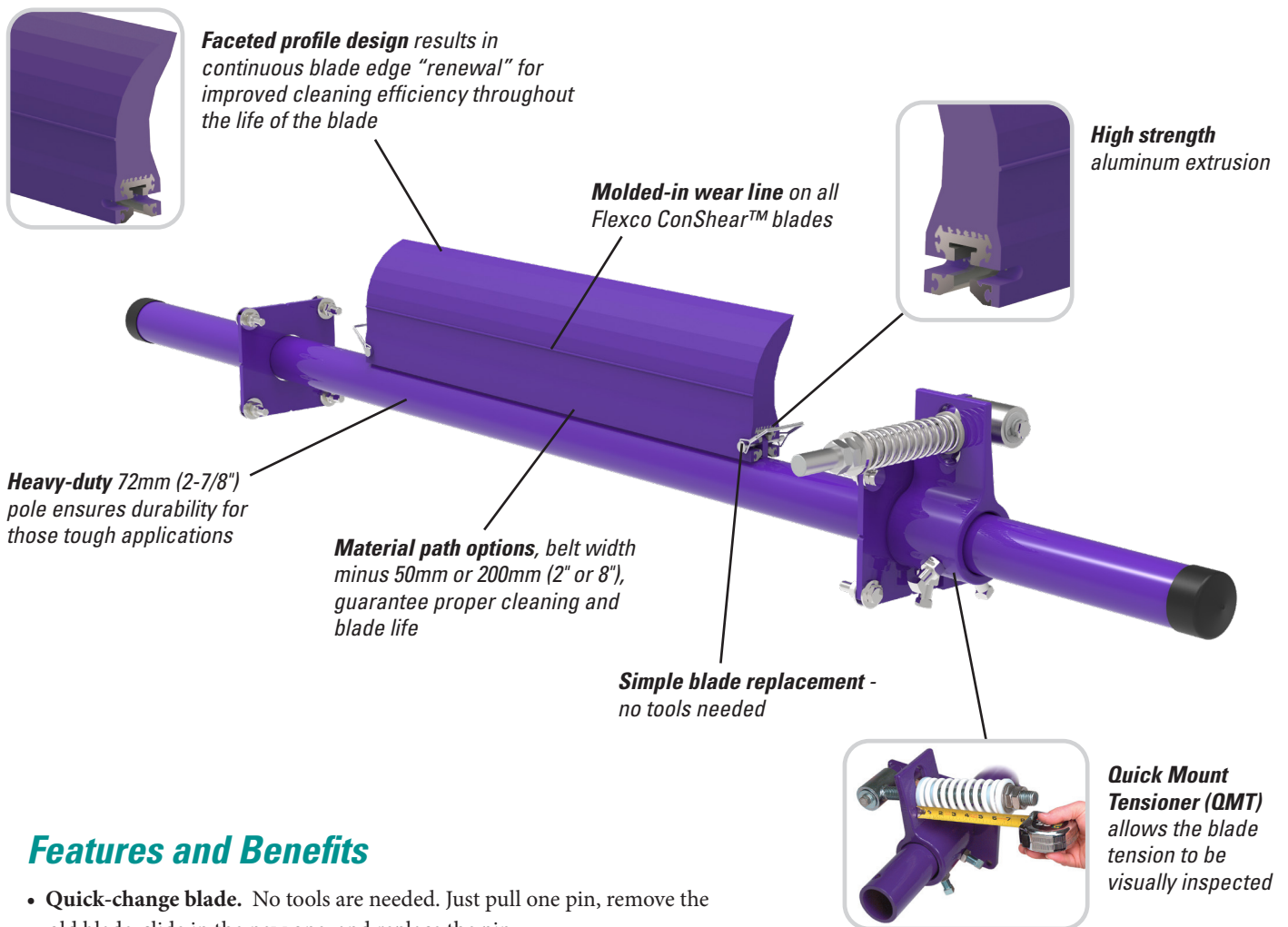


# MSP

## Standard Mine-Duty Precleaner

### Economical and Effective

The MSP Standard-Duty Precleaner is not your average solid-blade belt cleaner that mounts on the head pulley. It is a mine-tough design that combines simple, do-it-yourself installation, quick maintenance and effective cleaning results with an affordable price tag.



### Features and Benefits

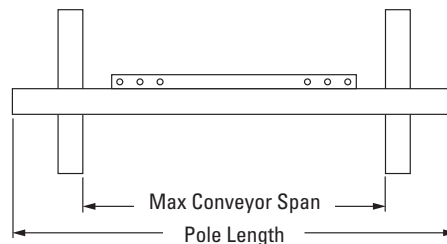
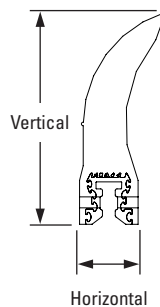
- **Quick-change blade.** No tools are needed. Just pull one pin, remove the old blade, slide in the new one, and replace the pin.
- Works with Flexco and other mechanical splices. The spring tensioner quickly moves the blade away from the belt when a splice passes. The polyurethane blade easily glides over the splice without damage and with minimal cleaning disruption.
- Easy to service. All maintenance work is done from the easy-access side of the beltline. Blade retensioning and change-out are quick and easy.
- Fits most conveyor structures. Available for belt widths from 600 to 2100mm (24 to 84"). The MSP poles are extra long (belt width plus 1350mm (54")) to accommodate varying structure widths.

# MSP

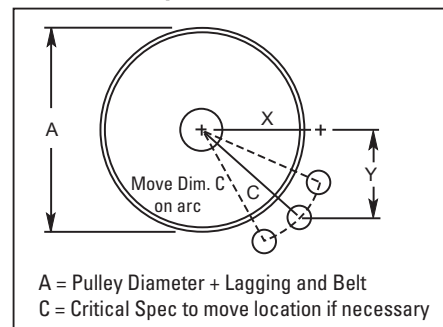
## Standard Mine-Duty Precleaner

### Specifications and Guidelines

- **Maximum Belt Speed**  
3.5 M/sec (700 FPM)
- **Temperature Rating**  
-35 to 82°C (-30 to 180°F)
- **Minimum Pulley Diameter**  
400mm (16")
- **Blade Height**  
185mm (7-1/4")
- **Usable Blade Wear Length**  
100mm (4")
- **Blade Material**  
Polyurethane 83 durometer  
(proprietary blend for abrasion resistance and long wear)
- **Available for Belt Widths**  
600 to 2100mm (24 to 84")
- **CEMA Cleaner Rating**  
Class 3
- **Horizontal Clearance Required**  
100mm (4")
- **Vertical Clearance Required**  
254mm (10")
- **Pole Length**  
Cleaner size + 1350mm (54")
- **Maximum Conveyor Span**  
Cleaner size + 1100mm (44")



### Pole Location Specs



### Ordering Information

MSP Precleaner Belt Width Minus 50mm (2")					
Belt Width		Blade Width		Ordering Number	Item Code
mm	in.	mm	in.		
600	24	550	22	MSP-224	75787
750	30	700	28	MSP-230	75788
900	36	850	34	MSP-236	75789
1050	42	1000	40	MSP-242	75790
1200	48	1150	46	MSP-248	75791
1350	54	1300	52	MSP-254	75792
1500	60	1450	58	MSP-260	75793
1800	72	1750	70	MSP-272	75794
2100	84	2050	82	MSP-284	76796
Belt Width Minus 200mm (8")					
600	24	400	16	MSP-824	75795
750	30	550	22	MSP-830	75796
900	36	700	28	MSP-836	75797
1050	42	850	34	MSP-842	75798
1200	48	1000	40	MSP-848	75799
1350	54	1150	46	MSP-854	75800
1500	60	1300	52	MSP-860	75801
1800	72	1600	64	MSP-872	75802
2100	84	1900	76	MSP-884	76797

Replacement ConShear™ Blades			
Blade Width		Ordering Number	Item Code
mm	in.		
250	10	CRB-10	75628
400	16	CRB-16	75629
550	22	CRB-22	75630
700	28	CRB-28	75631
850	34	CRB-34	75632
1000	40	CRB-40	75633
1150	46	CRB-46	75634
1300	52	CRB-52	75635
1450	58	CRB-58	75636
1600	64	CRB-64	75775
1750	70	CRB-70	75773
1900	76	CRB-76	76940
2050	82	CRB-84	76941

Other blade sizes available upon request.

### Pole Location Chart

A		X		Y		C	
mm	in.	mm	in.	mm	in.	mm	in.
250	10	68	2 5/8	230	9	240	9 4/8
275	11	88	3 4/8	230	9	246	9 6/8
300	12	102	4	230	9	252	9 7/8
325	13	130	5 1/8	230	9	264	10 3/8
350	14	142	5 5/8	230	9	270	10 5/8
375	15	164	6 4/8	230	9	282	11 1/8
400	16	176	7 1/8	230	9	290	11 1/2
425	17	196	7 7/8	230	9	302	12
450	18	204	8 1/4	230	9	308	12 1/4
475	19	222	9	230	9	320	12 3/4
500	20	232	9 3/8	230	9	326	13
525	21	248	10	230	9	338	13 1/2
550	22	266	10 3/4	230	9	352	14
575	23	282	11 3/8	230	9	364	14 1/2
600	24	298	12	230	9	376	15
625	25	312	12 5/8	230	9	388	15 1/2
650	26	330	13 1/4	230	9	402	16
675	27	344	13 7/8	230	9	414	16 1/2
700	28	358	14 3/8	230	9	426	17
725	29	372	15	230	9	438	17 1/2
750	30	390	15 5/8	230	9	452	18
775	31	402	16 1/8	230	9	464	18 1/2
800	32	416	16 3/4	230	9	476	19
825	33	430	17 1/4	230	9	488	19 1/2
850	34	446	17 7/8	230	9	502	20
875	35	460	18 3/8	230	9	514	20 1/2
900	36	474	19	230	9	526	21
925	37	486	19 1/2	230	9	538	21 1/2
950	38	502	20	230	9	552	22
975	39	514	20 5/8	230	9	564	22 1/2
1000	40	528	21 1/8	230	9	576	23
1025	41	542	21 3/4	230	9	588	23 1/2
1050	42	556	22 1/4	230	9	602	24