

## The Reliable and Economical Solution for Belt Slippage

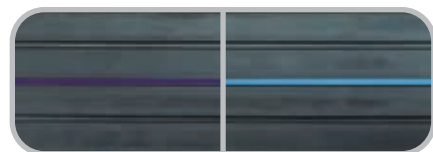
Flex-Lag has been developed in multiple styles including Light-Duty, Plain-Pattern, Diamond-Pattern Rubber and Diamond-Pattern Ceramic to meet any application. Its design allows for installation in a fraction of the time compared to conventional lagging because Flex-Lag does not require removing the pulley from the conveyor system. A labor-saving cold vulcanization process makes on-site installation fast, simple and efficient.

Light-Duty



- Specially designed for pulleys with diameters as small as 50mm (2").
- Moisture is channeled between small raised buttons that support and grip the belt and deliver superior traction.

Plain-Pattern



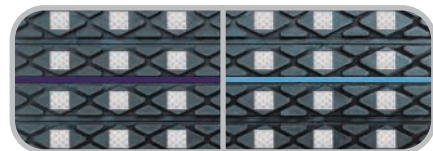
- Helps prevent belt slippage in extremely dirty environments.
- Rubber flexes during use to shed excess materials and prevent material build-up as well as premature belt and pulley wear.
- Horizontal grooves trap and deflect water, resulting in a coefficient of friction superior to plain-sheet lagging.

Diamond-Pattern Rubber



- Constructed from high durometer rubber for abrasion resistance.
- Diamond pattern is based on rain tire tread designs for superior water-shedding characteristics.
- Helps keep belt slippage to the absolute minimum.

Diamond-Pattern Ceramic



- Large ceramic tile is molded into the diamond section, providing an increased coefficient of friction.
- Diamond pattern is based on rain tire tread designs for superior water-shedding characteristics.
- Uses the advantages of a ceramic product at a more affordable cost.

### Features and Benefits

- **Easy to use.** The in situ installation of Flex-Lag eliminates the need to remove the pulley from the conveyor system, meaning less conveyor downtime.
- **Works on a range of pulleys.** Because these come in rolls 200mm wide (8") and lengths of 3.3M (10.8 ft.) for Light-Duty and 6.5M (21 ft.) for Plain-Pattern and Diamond-Pattern solutions, virtually any pulley dimensions can utilize Flex-Lag. See step-by-step instructions and Strip Selection Guide to apply.
- **Available with FRAS approved rubber.** The Flex-Lag Plain Pattern, Diamond-Pattern Rubber and Diamond-Pattern Ceramic are available in both natural rubber and FRAS (Fire Resistant Anti Static) rubber, marked in blue for easy identification on site.

## Specifications and Guidelines

### Step-by-Step selection instructions

**Step 1:** Measure the diameter of your pulley.

**Step 2:** See Strip Selection Chart to determine the number of strips you will need to lay lengthwise across the pulley.

**Step 3:** Choose the material and pattern best suited to your application.

**Step 4:** Determine the number of rolls required to cover pulley face:

- A. Determine Length of Strip-  
For Light-Duty and Plain-Pattern Lagging: Pulley face plus 50mm (2")  
For Diamond-Pattern Lagging: Pulley face plus 100mm (4")
- B. Calculate Strips per Roll-  
For Light-Duty Lagging:  $3.3M (129") \div \text{length of strip}$   
For Diamond-Pattern and Plain-Pattern Lagging:  
 $6.5M (252") \div \text{length of strip}$
- C. Number of Rolls Required-  
 $\text{Number of strips required} \div \text{strips per roll}$

Strip Selection					
Pulley Diameter		Strips Required	Pulley Diameter		Strips Required
mm	in.		mm	in.	
320-381	12.6-15.0	6	1083-1145	42.6-45.0	18
382-445	15.1-17.5	7	1146-1210	45.1-47.5	19
446-510	17.6-20.0	8	1211-1273	47.6-50.1	20
511-573	20.1-22.5	9	1274-1336	50.2-52.6	21
574-636	22.6-25.0	10	1337-1400	52.7-55.1	22
637-700	25.1-27.5	11	1403-1463	55.2-57.6	23
701-764	27.6-30.0	12	1466-1527	57.7-60.1	24
765-827	30.1-32.5	13	1529-1590	60.2-62.6	25
828-891	32.6-35.0	14	1593-1654	62.7-65.1	26
892-955	35.1-37.5	15	1656-1717	65.2-67.6	27
956-1018	37.6-40.0	16	1720-1781	67.7-70.1	28
1019-1082	40.1-42.5	17	1783-1844	70.2-72.6	29

Specifications:		
<b>Temperature Rating</b> -15° C to 85° C (5° F to 185° F)	<b>Rubber Hardness</b> 68 ± 3 Shore A	<b>Ceramic Compound (Diamond Ceramic Lagging)</b> Aluminum Oxide (Al <sub>2</sub> O <sub>3</sub> )
<b>Rubber Compound</b> SBR (Styrene-Butadiene-Rubber)	<b>FRAS (Fire Resistant Anti Static)</b> <b>MSHA Certification # - MSHA NO. IC-190</b> Available (see below)	<b>Ceramic Hardness (Diamond Ceramic Lagging)</b> 83 HRA Rockwell Hardness Scale A

## Ordering Information

Flex-Lag® Roll Lagging - SBR Rubber*						
Pattern	Thickness		Length		Ordering Number	Item Code
	mm	in.	m	ft.		
Diamond	10	3/8	6.5	21	10ND6.5/21	71002
Diamond	12	1/2	6.5	21	12ND6.5/21	71004
Diamond	15	5/8	6.5	21	15ND6.5/21	71006
Diamond	20	3/4	6.5	21	20ND6.5/21	71008
Diamond	25	1	6.5	21	25ND6.5/21	71152
Plain	10	3/8	6.5	21	10NP6.5/21	71010
Plain	12	1/2	6.5	21	12NP6.5/21	71012
Plain	15	5/8	6.5	21	15NP6.5/21	71017
Plain	20	3/4	6.5	21	20NP6.5/21	71021
Plain	25	1	6.5	21	25NP6.5/21	71163
Diamond Ceramic	12	1/2	6.5	21	12NDC6.5/21	71155

Flex-Lag® Roll Lagging - FRAS Rubber*						
Pattern	Thickness		Length		Ordering Number	Item Code
	mm	in.	m	ft.		
Diamond	10	3/8	6.5	21	10FRD6.5/21	71014
Diamond	12	1/2	6.5	21	12FRD6.5/21	71016
Diamond	15	5/8	6.5	21	15FRD6.5/21	71018
Diamond	20	3/4	6.5	21	20FRD6.5/21	71019
Plain	10	3/8	6.5	21	10FRP6.5/21	71020
Plain	12	1/2	6.5	21	12FRP6.5/21	71022
Plain	15	5/8	6.5	21	15FRP6.5/21	71015
Plain	20	3/4	6.5	21	20FRP6.5/21	72129
Diamond Ceramic	12	1/2	6.5	21	12FRDC6.5/21	71159

FRAS (Fire Resistant Anti Static) MSHA Certification # - MSHA NO. IC-190  
Ordering Number Key: **N** - SBR, **FR** - FRAS, **P** - Plain, **D** - Diamond,  
**D** - Diamond Ceramic, **LD** - Light Duty

Flex-Lag® Light Duty Rubber**							
Pattern	Thickness		Length		Material	Ordering Number	Item Code
	mm	in.	m	ft.			
Light Duty	7.5	.3	3.3	11	SBR	7.5NLD3.3/11	71077
Light Duty	7.5	.3	3.3	11	Nitrile	7.5WLD3.3/11	71076

Shaded items are made to order.  
Lead time: 8 -10 weeks

\*For Flex-Lag® Natural Rubber and Flame-Resistant Rubber, all material is 200mm (8") wide and 3.3M (10.8') rolls.

\*\*For Flex-Lag® Light Duty Rubber and Flame-Resistant Rubber, all material is 200mm (8") wide and 6.5M (21') rolls.

Authorized Distributor:

Av. Jorge Alessandri 11.500 – Edificio 7 • Megacentro San Bernardo  
San Bernardo • Santiago, Chile  
Teléfono: 56-2-2896-7870 • Correo electrónico: ventaslatam@flexco.com

Visite [www.flexco.com](http://www.flexco.com) para conocer otras ubicaciones y productos de Flexco.

©2021 Flexible Steel Lacing Company. 02/16/21. Para hacer otro pedido: X3884

