

# HEAVY DUTY FLOATING BLADE

## Belt Ploughs

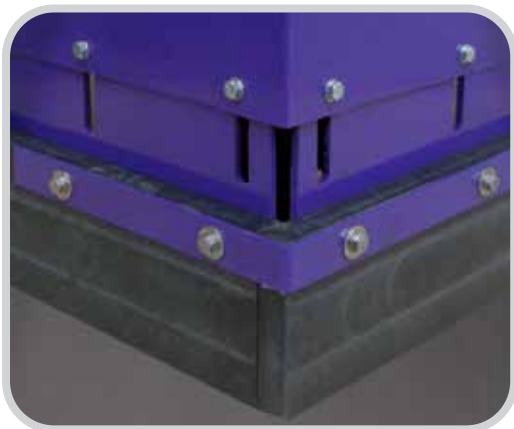
### Maximum Protection for Pulleys

Keeping your conveyor beltlines clean is a problem that is not confined to the head pulley area. Designed to maximise wide and high speed belt applications, the Heavy Duty Floating Blade Belt Plough prevents bouncing and deflects rogue material from rebounding over the plough and lodging in return belt and the tail pulley, which can result in belt damage. Also available in stainless steel with FRAS approved blades, the Heavy Duty Floating Blade Belt Plough delivers superior cleaning and extended blade life.



### Twin Pole Design for Heavy-Duty Application

Heavy Duty Floating Blade V-Ploughs are designed to maximise wide and high speed belt applications. The twin poles prevent bouncing and keep rogue material from pinching between the return belt and the tail pulley which can result in belt damage.



*Extra heavy-duty blade for high speed and wide belt applications.*

### Key Features and Benefits

- Floating blade design self-adjusts as blade wears, eliminating the need for manual adjustment
- Patented design delivers superior cleaning with extended blade life
- Fail-safe fixed frame so as the blade wears, the frame will never touch the belt
- Deflecting shields prevent rocks and debris rebounding over plough
- Cleans the inside/clean side of the return belt
- Eliminates conveyor damage and belt mistracking caused by debris lodging in the tail pulley or take-up
- Available in a range of sizes for multiple belt widths
- Ejects rogue material on both sides of the conveyor
- UHMWPE blades provide long-life and easy change-out
- Also available in Stainless Steel with FRAS approved for use in underground environments

## Technical Specifications

- 200 mm high x 40 mm thick UHMWPE blade
- Suits belts from 900 mm to 3000 mm
- Provides total belt coverage
- Fully assembled for quick installation
- All steel components are grit blasted and powder coated — fasteners are 316 Stainless Steel
- Available in Stainless Steel

## Easy Installation and Maintenance.

The Heavy Duty Floating Blade Belt Plough comes fully assembled and can be placed right into position on the conveyor. Simple, step-by-step instructions are included for quick installation. Since the blade is self-adjusting, no blade readjustment is needed throughout the blade life to accommodate for wear. Replacement blades are cut to size making blade change out simple.

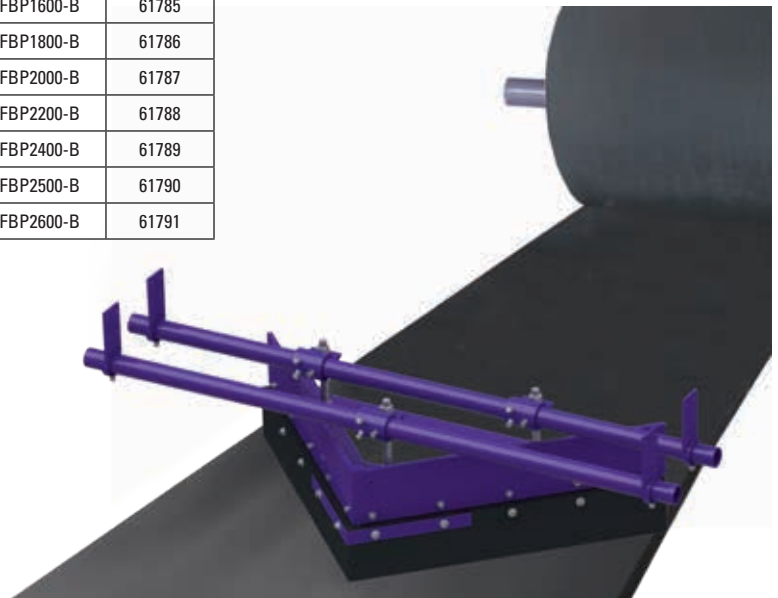
# HEAVY DUTY FLOATING BLADE

## Belt Ploughs

Twin Pole V-Plough				
Belt Width (mm)	Ordering Number	Item Code	Ordering Number	Item Code
			Powder Coated	Stainless Steel
900	FBP900-TP	61750	FBP900-TP S/S	61765
1050	FBP1050-TP	61751	FBP1050-TP S/S	61766
1200	FBP1200-TP	61752	FBP1200-TP S/S	61767
1400	FBP1400-TP	61753	FBP1400-TP S/S	61768
1500	FBP1500-TP	61754	FBP1500-TP S/S	61769
1600	FBP1600-TP	61755	FBP1600-TP S/S	61770
1800	FBP1800-TP	61756	FBP1800-TP S/S	61771
2000	FBP2000-TP	61757	FBP2000-TP S/S	61772
2200	FBP2200-TP	61758	FBP2200-TP S/S	61773
2400	FBP2400-TP	61759	FBP2400-TP S/S	61774
2500	FBP2500-TP	61760	FBP2500-TP S/S	61775
2600	FBP2600-TP	61761	FBP2600-TP S/S	61776

Contact Flexco for additional sizes.

Heavy Duty Floating Blade Replacement Blades		
Belt Width (mm)	Ordering Number	Item Code
900	FBP900-B	61780
1050	FBP1050-B	61781
1200	FBP1200-B	61782
1400	FBP1400-B	61783
1500	FBP1500-B	61784
1600	FBP1600-B	61785
1800	FBP1800-B	61786
2000	FBP2000-B	61787
2200	FBP2200-B	61788
2400	FBP2400-B	61789
2500	FBP2500-B	61790
2600	FBP2600-B	61791



Authorised Distributor:

Flexco (Aust.) Pty. Ltd • 10 Solent Circuit, Norwest • NSW, Australia, 2153 • Australia  
Tel: 612-8818-2000 • Fax: 612-8824-6333 • E-mail: salesau@flexco.com

Visit [www.flexco.com](http://www.flexco.com) for other Flexco locations and products.

©2021 Flexible Steel Lacing Company. 06/23/21. For reorder: X3065

