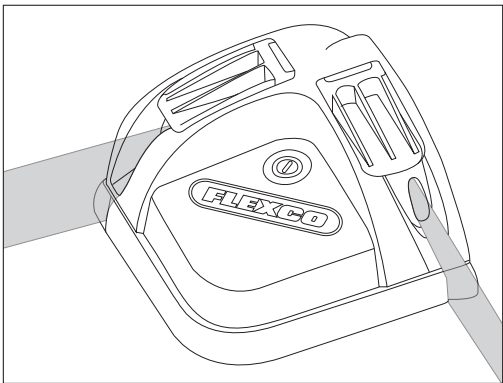

Laser Belt Square™

Safety and Operation Manual

For squaring conveyor belts for splicing



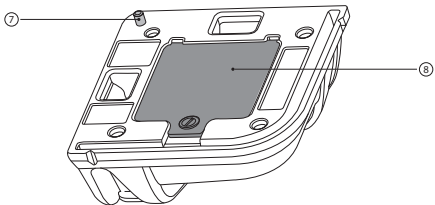
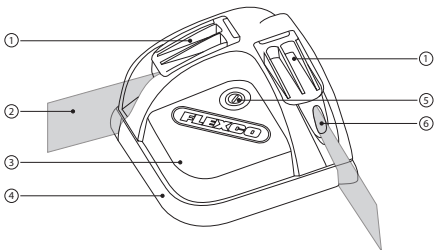
CAUTION

Use of controls or adjustments or performance of procedures other than those specified herein may result in hazardous radiation exposure.

Table of Contents

Main Components Laser Belt Square™	3
Specifications.....	4
General Safety Rules.....	5
Product Labeling	8
Installation of Batteries.....	9
Usage Instructions.....	13

Main Components Laser Belt Square™



1. Targets
2. Laser Beam
3. Housing
4. Base
5. Power Switch
6. Lens
7. Spring Loaded Pin
8. Battery Storage Compartment
9. Protective case

FLEXCO

Specifications

<i>Laser Belt Square Specifications</i>	
Parameter	Specification
Product Laser Class	Class 3R
Operating Voltage	3 V
Wavelength	635 - 650 nm
Laser Power for Classification	<5 mW CW
Beam Diameter	<8 x 12 mm at 10 m
Divergence	<1 mrad x 0.35 to 1.57 Rad
Transverse Beam Mode	TEM00
Operating Temperature Range	-10 to 40 °C
Overall Dimensions	4-5/8" x 4-5/8" x 2-7/16"
Ingress Protection Classification	IP65
Weight	2 pounds
Battery Requirements	Four 1.5 V, AA batteries
Estimated Battery Life	60 hours (using alkaline type batteries)
Laser Beam Squareness Tolerance	+/- 1/4" @ 30 ft.
FDA Compliance	Complies with FDA performance standards for laser products except for deviations pursuant to Laser Notice No. 50, dated June 24, 2007
EN/IEC Compliance	EN/IEC 60825-1 2007

General Safety Rules - Save These Instructions -

Explanation of signal words used on the next pages:

Signal words:

“DANGER” indicates an imminently hazardous situation which, if not avoided, will result in death or serious injury. The signal word is limited to the most extreme situations.

“WARNING” indicates a potentially hazardous situation which, if not avoided, could result in death or serious injury.

“CAUTION” indicates a potentially hazardous situation which, if not avoided, may result in minor or moderate injury. It may also be used to alert against unsafe practices.

Safety Symbol



This international safety symbol is used to identify and call attention to specific safety matters.

Safety Information

To Avoid Severe Personal Injury or Property Damage, read carefully and understand the following Safety Precautions.

FLEXCO

General Safety Rules - Save These Instructions -

1. SAFETY CAUTIONS

WARNING



Avoid laser radiation: LASER LIGHT, AVOID DIRECT EYE EXPOSURE, CLASS 3R LASER PRODUCT.

WARNING

Do not place the laser in a position which may cause anyone to intentionally or unintentionally stare into the laser beam. Serious eye injury could result.

WARNING

Do not operate the laser around children or allow children to operate the laser.

WARNING

Turn the laser off when it is not in use.

General Safety Rules - Save These Instructions -

2. MAINTENANCE

WARNING

Do not disassemble the laser. There are no user serviceable parts inside. Disassembling the Laser Belt Square will void all warranties of the product. Do not modify the product in any way. Modifying the tool may result in Hazardous Laser Radiation Exposure.

CAUTION

No scheduled maintenance necessary to keep the product in compliance.

WARNING

No service allowed by customer on this product.

WARNING

Laser belt square is not to be opened or modified by the customer, except for battery replacement.

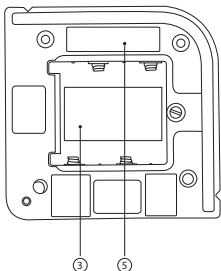
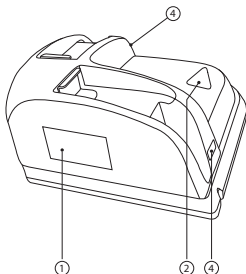
WARNING

Service shall only be handled by authorized factory trained technicians. No user serviceable parts available. If service or repair is needed, the unit must be returned to:

Flexco, 1995 Oak Industrial Dr NE
Grand Rapids, MI 49505 USA
Telephone: (630) 971-0150

FLEXCO

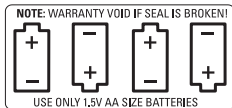
Product Labeling



1.



2.



3.



4.

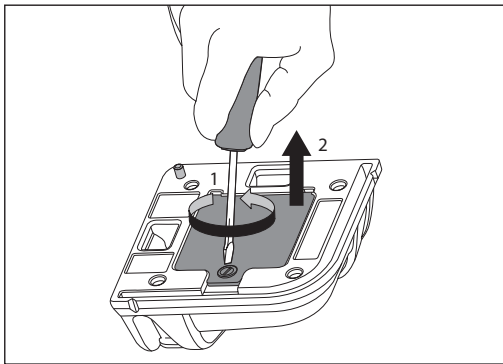


5.

Installation of Batteries

- ✓ To guarantee a long life operation preferably use alkaline type batteries.

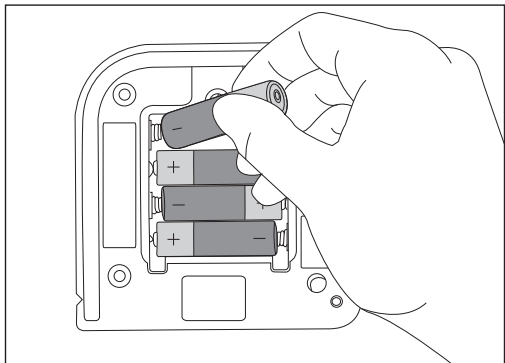
A1



Remove screw (1) to open battery housing cover (2).

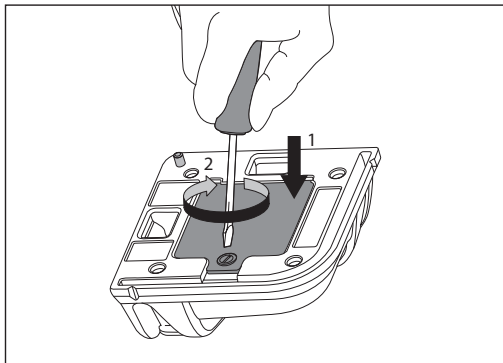
Installation of Batteries

A2



Insert four 1.5 v, AA batteries per diagram. Pay attention to the polarity symbols (+ and -).

A3

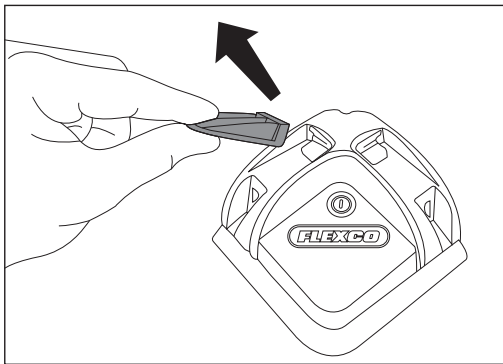


Apply battery housing cover (1) and install screw (2).

Usage Instructions

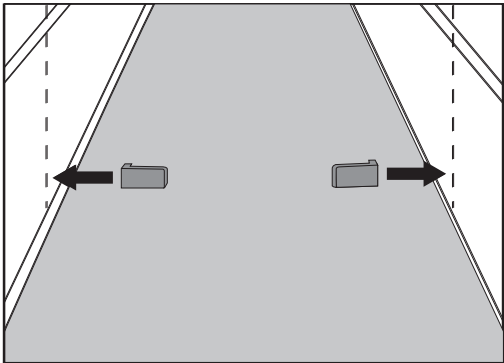
- ✓ Make sure the laser is turned off at the start of the operation

B1



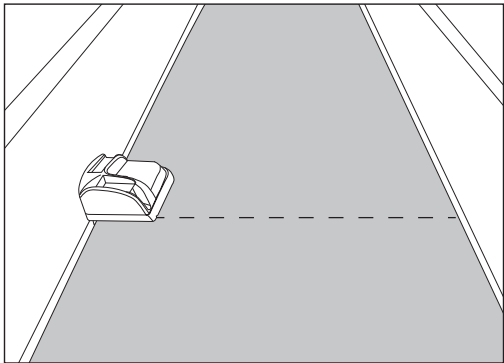
Remove magnetic targets from laser housing.

B2



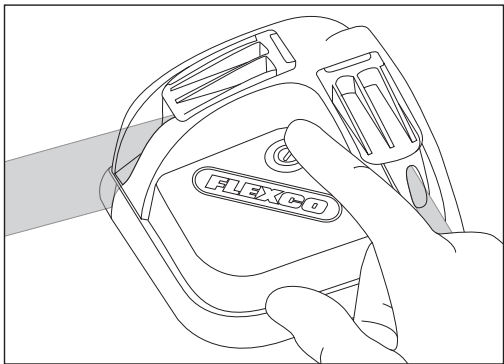
Attach targets to conveyor sidewalls approximately 4.5M (15 feet) away from future cut line. If less than 4.5M (15 feet) length is available, position targets as far as possible from future cut line.

B3



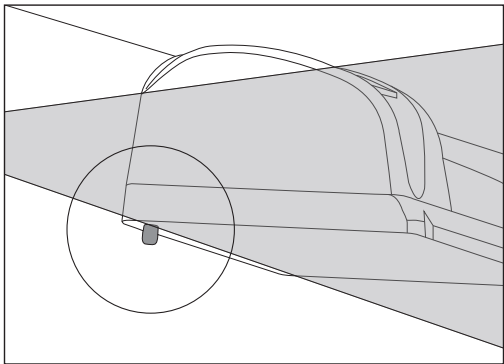
Position laser square at future cut line.

B4



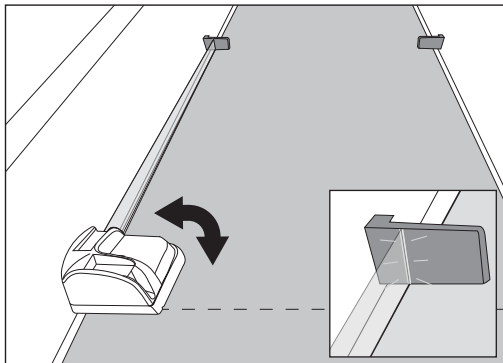
Depress power switch to turn on lasers.

B5



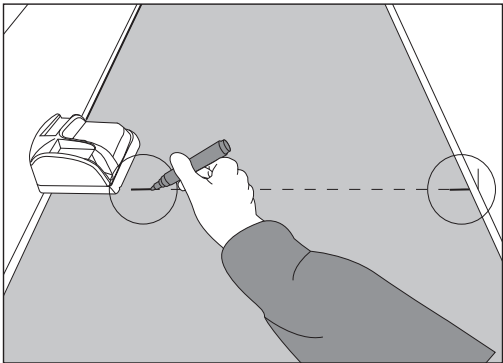
Slide laser square off belt edge until spring loaded pin extends below belt surface.

B6



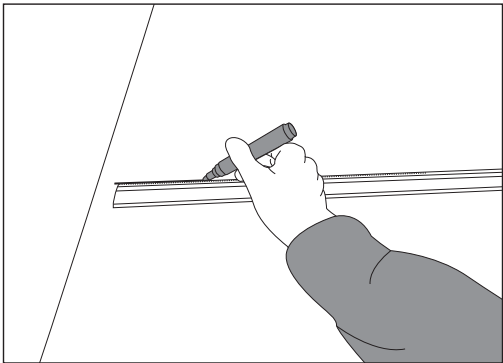
Using the pin as a pivot point against belt edge, align laser with edge of the belt, using targets as an aid.

B7



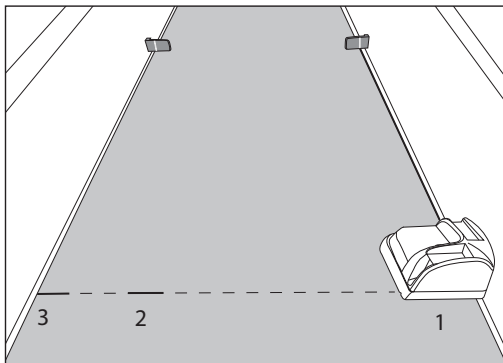
Mark belt in two places along laser line- one directly in front of the laser window, one at opposite belt edge. Depress power switch to turn off lasers.

B8



If not using a Flexco Belt cutter: Use a straight edge to connect the two locations lines from B7 and continue to both belt edges.

B9



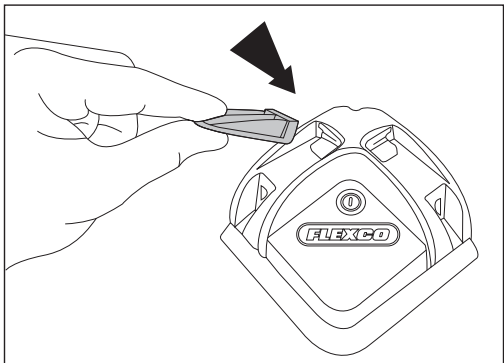
When using the Flexco belt cutter*, it is desirable to have cut reference marks directly adjacent to both belt edges for easier alignment in the cutter. The cut line can be marked either by:

- A. Method used in B7-B8, using a straight edge across the two laser located reference lines.
- B. Method using laser square as a continuation from B7:
 1. Position laser square on opposite side of belt
 2. Repeat B3-B7, aligning with the existing marks from B7
 3. Mark belt on edge

* e.g. Clipper® 845LD belt cutter or Electric Belt Cutter

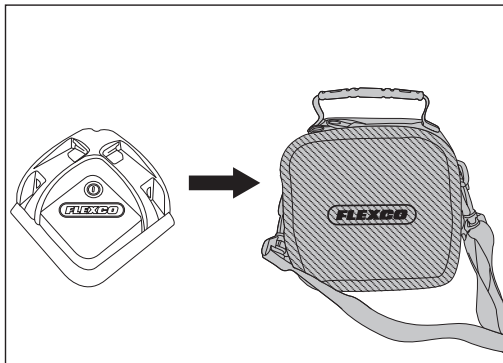
FLEXCO

B10



Replace targets in base.

B11



Replace laser square in protective case.

Visit www.flexco.com for other Flexco locations and products, or to find an authorised distributor.