

Replacement Anvil Instructions for Steel MSRT and MSRT8 Tools

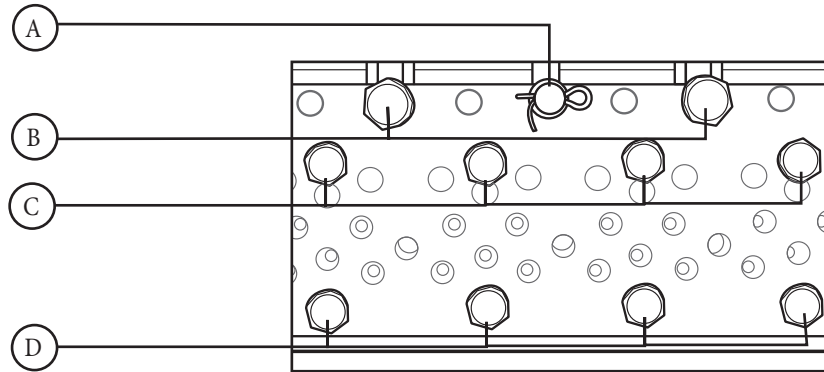
Instructions

A. Cotter Pin, Spring,
and Gauge Pin Guide

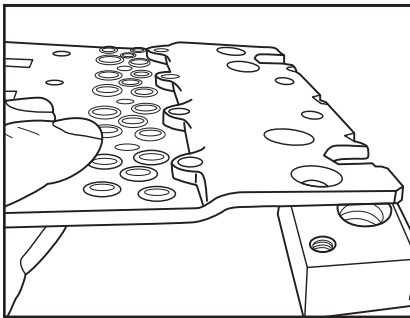
B. Guide Block Locator Bolts

C. 3/4" (19 mm) anvil bolts

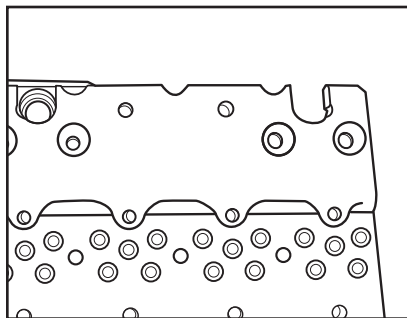
D. 7/8" (22 mm) anvil bolts



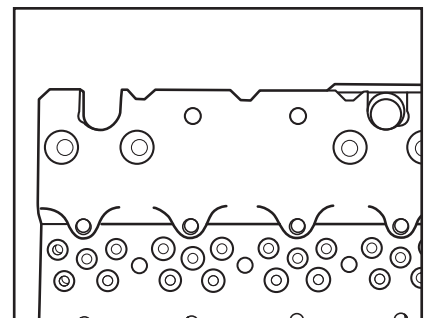
Note: Steps 1-2 cover end anvils. If you are replacing an interior (middle) anvil, skip to Step 3.



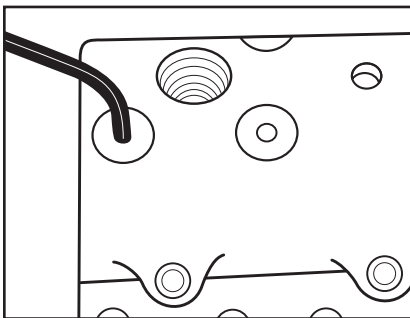
1A. Place Clamp Bar nut block under the anvil. Make sure to line up the bolt holes in the anvil with the holes in the clamp bar locator block.



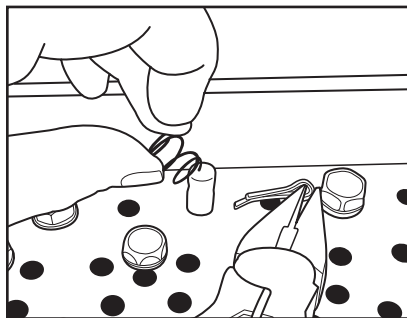
1B. Make sure that the nut block is on the outside edge of the tool. When attaching the anvil on the left side of the tool, the nut block should be secured to the left side of the anvil.



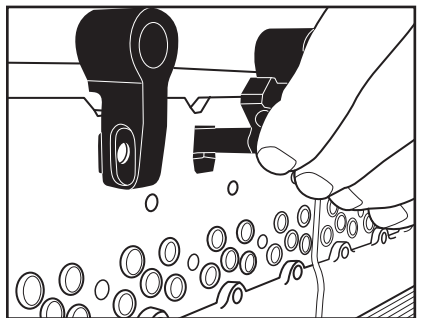
1C. If the anvil is going on the right side of the tool, the nut block should be secured to the right side of the anvil.



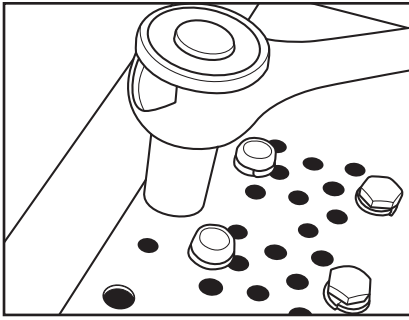
2. Using the enclosed allen wrench, secure the clamp bar nut block to the anvil with the two enclosed bolts.



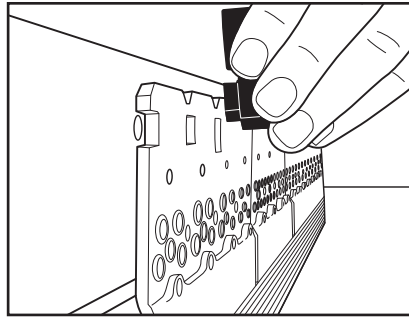
3. Turn tool over to access the bottom of the tool. Using pliers, remove cotter pin from the gauge pin guide. Then remove spring.



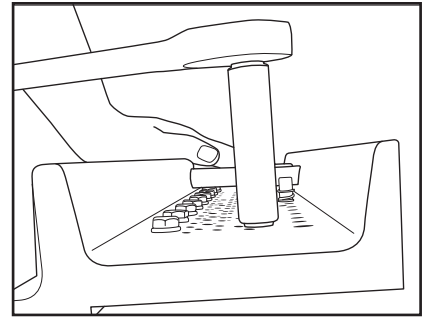
4. If the gauge pin guide does not fall out on its own, turn the tool to its side and remove it.



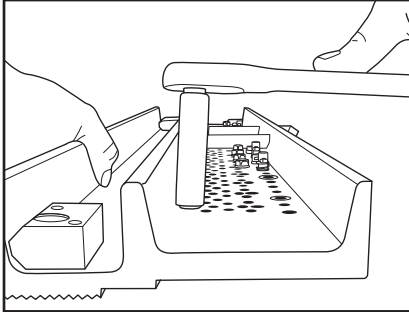
5. Using a 1/2" or 13 mm wrench, loosen the two guide block locator bolts.



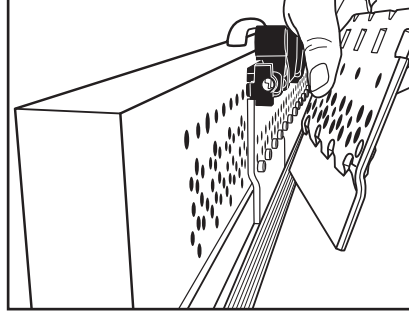
6. Turn the tool on its side and remove both guide block locators.



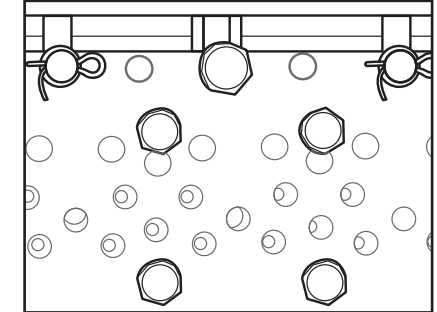
7. Using a 7/16" or 11 mm wrench, remove the four bolts in the center of the anvil plate. These bolts measure 3/4" or 19 mm in length.



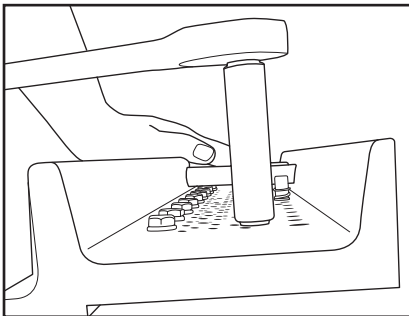
8. Using a 7/16" or 11 mm wrench, remove the four bolts on the end of the anvil plate. These bolts measure 7/8" or 22 mm in length.



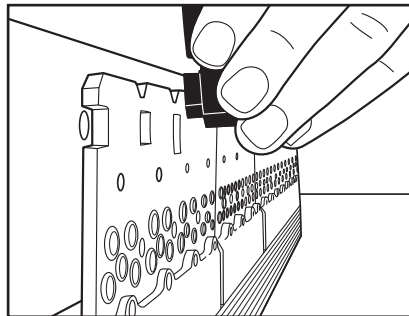
9. Remove existing anvil Plate from the tool and place new anvil plate on the tool.



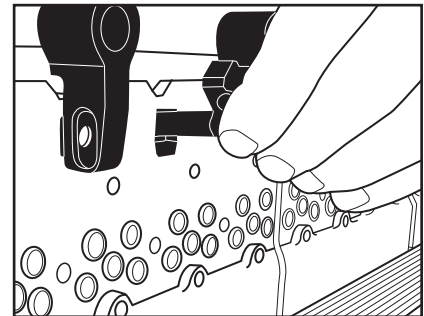
10. Re-insert all bolts into the tool and hand tighten them. The four anvil bolts that measure 3/4" (19 mm) should be in the middle and the four anvil bolts that measure 7/8" (22 mm) should be on the outside edge.



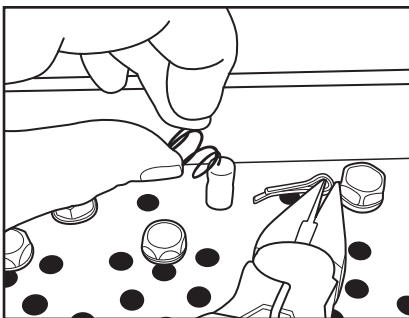
11. Using a 7/16" or 11 mm wrench, tighten the eight anvil bolts. Tighten the shorter bolts-3/4" (19 mm) first.



12. Place the guide block locators back on the tool and using a 1/2" or 13 mm wrench, tighten the two guide block locator bolts.



13. Replace the gauge pin guide into its place.



14. Place spring over the bottom of the gauge pin guide. Insert the cotter pin into the gauge pin guide making sure the spring is contained between the cotter pin and the tool.

15. Bend cotter pin to ensure that it stays in place.

