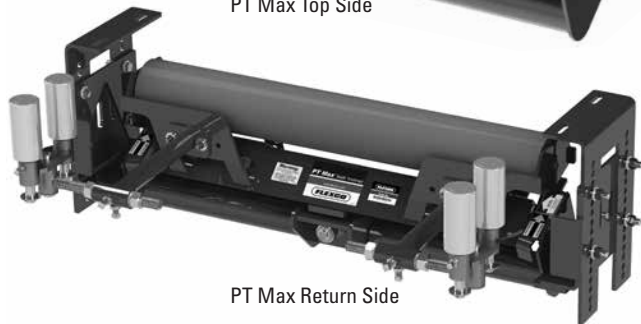


PT Max™ Belt Trainer

Installation, Operation and Maintenance Manual



PT Max Top Side



PT Max Return Side



PT Max V-Return

Serial Number: _____

Purchase Date: _____

Purchased From: _____

Installation Date: _____

Serial number information can be found on the Serial Number Label included in the Information Packet found in the cleaner carton.

This information will be helpful for any future inquiries or questions about belt cleaner replacement parts, specifications or troubleshooting.

Table of Contents

Section 1 - Important Information	4
1.1 General Introduction	4
1.2 User Benefits	4
1.3 Proper Belt Trainer Selection.....	5
Section 2 - Safety Considerations and Precautions	6
2.1 Stationary Conveyors.....	6
2.2 Operating Conveyors.....	6
Section 3 - Pre-Installation Checks and Options.....	7
3.1 Checklist	7
3.2 Optional Installation Accessories.....	7
Section 4 - Installation Instructions.....	8
Section 5 - Pre-Operation Checklist and Testing.....	12
5.1 Pre-Op Checklist	12
5.2 Test Run the Conveyor	12
Section 6 - Maintenance.....	13
6.1 New Installation Inspection.....	13
6.2 Routine Visual Inspection.....	13
6.3 Routine Physical Inspection	13
6.4 Idler Replacement Instructions	14
6.5 Sensor Roller Replacement Instructions.....	15
6.6 Maintenance Log.....	16
6.7 Maintenance Checklist	17
Section 7 - Troubleshooting	18
Section 8 - Specs and CAD Drawings.....	19
8.1 CAD Drawing - PT Max™ Top Side	19
8.2 CAD Drawing - PT Max Top Side HD.....	20
8.3 CAD Drawing - PT Max Return	21
8.4 CAD Drawing - PT Max Return HD.....	22
8.5 CAD Drawing - PT Max V-Return.....	23
8.6 CAD Drawing - PT Max V-Return HD	24
8.7 PT Max Top Side Data Sheet	25
8.8 PT Max Return Side Data Sheet.....	26
8.9 PT Max V-Return Side Data Sheet.....	27
8.10 PT Max Roller Side Data Sheet.....	28
Section 9 - Replacement Parts	29
9.1 Replacement Parts List	29
Section 10 - Other Flexco® Conveyor Products.....	31

Section 1 - Important Information

1.1 General Introduction

We at Flexco® are very pleased that you have selected a PT Max™ Belt Trainer for your conveyor system.

This manual will help you to understand the installation, operation and maintenance of this product and assist you in making it work up to its maximum efficiency over its lifetime of service.

It is essential for safe and efficient operation that the information and guidelines presented be properly understood and implemented. This manual will provide safety precautions, installation instructions, maintenance procedures and troubleshooting tips. In addition, please follow all standard, approved safety guidelines when working on your conveyor.

If, however, you have any questions or problems that are not covered, please visit our web site or contact our Customer Service Department:

Customer Service: USA: 1-800-541-8028

Visit www.flexco.com for other Flexco locations and products.

Please read this manual thoroughly and pass it on to any others who will be directly responsible for installation, operation and maintenance of this impact bed. While we have tried to make the installation and service tasks as easy and simple as possible, **this product does however require correct installation and regular inspection and maintenance to maintain top working condition.**

1.2 User Benefits

Belt mistracking is a common problem that produces various problems, ranging from belt and structure damage to product spillage and safety issues. By utilizing the PT Max, it is possible to correct a belt that is mistracking and causing these problems. Multiple units may be required depending on the length of the mistracking belt.

Section 1 - Important Information

1.3 Proper Belt Trainer Selection

MODEL	APPLICATION RANGE
Belt Positioner™	Return side only, 800 PIW max tension on Small, Medium and Large; 1200 PIW max tension on Extra Large. Also works on reversing belts.
PT Smart™	Medium-duty belts up to 1600 PIW max tension. Belt width + 3" idler. Belt thickness 1" maximum.
PT Smart™ Underground	Medium-duty belts up to 1600 PIW max tension. Belt width + 9" idler. Belt thickness 1" maximum. Fits underground structure.
PT Max™ Top Side	Heavy-duty belts up to 3000 PIW max (generally over 3/4" (19mm) thick) Belt width 24" - 60" (600 - 1500mm)
HD PT Max™ Top Side	Heavy-duty belts up to 6000 PIW max tension. Belt width 48" - 84" (1200 - 2100mm)
PT Max™ Return Side and V-Return	Heavy-duty, higher tension belts up to 3000 PIW max. (generally up to 1" (25mm) thick)
HD PT Max™ Return Side and V-Return	Heavy-duty belts up to 6000 PIW max tension. Belt width 48" - 84" (1200 - 2100mm)

Belt Positioner™



PT Smart™
Standard



PT Smart™
Underground
Structure



PT Max™
Top Side



PT Max™
Return Side



PT Max™
V-Return



CONVEYOR CRITERIA	BELT POSITIONER™	PT SMART™	PT SMART™ UNDERGROUND	PT MAX™ TOP SIDE	HD PT MAX™ TOP SIDE	PT MAX™ RETURN SIDE and V-RETURN	HD PT MAX™ RETURN SIDE and V-RETURN
Top side mistracking	NO	NO	NO	YES	YES	NO	NO
Return side mistracking	YES	YES	YES	NO	NO	YES	YES
Belt mistracking to one side	EXCELLENT	EXCELLENT	EXCELLENT	EXCELLENT	EXCELLENT	EXCELLENT	EXCELLENT
Belt mistracking to both sides	POOR	EXCELLENT	EXCELLENT	EXCELLENT	EXCELLENT	EXCELLENT	EXCELLENT
Inconsistent tracking problem	GOOD	EXCELLENT	EXCELLENT	EXCELLENT	EXCELLENT	EXCELLENT	EXCELLENT
Belt is cupped (heavy)	GOOD	GOOD	GOOD	EXCELLENT	EXCELLENT	GOOD	GOOD
Belt has low running tension	POOR	EXCELLENT	EXCELLENT	GOOD	GOOD	GOOD	GOOD
Belt has medium running tension	GOOD	EXCELLENT	EXCELLENT	EXCELLENT	EXCELLENT	EXCELLENT	EXCELLENT
Belt has high running tension	GOOD	GOOD	GOOD	EXCELLENT	EXCELLENT	EXCELLENT	EXCELLENT
Approx. "upstream" effect*	50' (15 M)	20' (6 M)	20' (6 M)	20' (6 M)	20' (6 M)	20' (6 M)	20' (6 M)
Approx. "downstream" effect*	50' (15 M)	120' - 150' (36 - 45 M)	120' - 150' (36 - 45 M)	150' - 200' (45 - 61 M)	150' - 200' (45 - 61 M)	150' - 200' (45 - 61 M)	150' - 200' (45 - 61 M)

*Typical results; actual results may vary

*Disk idlers have the potential to reduce these numbers

Section 2 - Safety Considerations and Precautions

Before installing and operating the PT Max™ Belt Trainer, it is important to review and understand the following safety information.

There are setup, maintenance and operational activities involving both **stationary** and **operating** conveyors. Each case has a safety protocol.

2.1 Stationary Conveyors

The following activities are performed on stationary conveyors:

- Installation
- Impact bar replacement
- Repairs
- Skirt rubber adjustments
- Cleaning

DANGER

It is imperative that OSHA/MSHA Lockout/Tagout (LOTO) regulations, 29 CFR 1910.147, be followed before undertaking the preceding activities. Failure to use LOTO exposes workers to uncontrolled behavior of the belt trainer caused by movement of the conveyor belt or belt trainer. Severe injury or death can result.

Before working:

- Lockout/Tagout the conveyor power source
- Clear the conveyor area where work is to take place

WARNING

Use Personal Protective Equipment (PPE):

- Safety eyewear
- Hardhats
- Safety footwear

Close quarters and heavy components create a worksite that compromises a worker's eyes, feet and skull. PPE must be worn to control the foreseeable hazards associated with conveyor belt components. Serious injuries can be avoided.

2.2 Operating Conveyors

There are two routine tasks that must be performed while the conveyor is running:

- Inspection of belt trainer performance
- Dynamic troubleshooting

DANGER

Every belt conveyor is an in-running nip hazard. Never touch or prod an operating belt trainer. Conveyor hazards cause instantaneous amputation and entrapment.

WARNING

Conveyors contain moving hazards. Stay as far from the trainer as practical and use safety eyewear and headgear.

WARNING

Never adjust anything on an operating belt trainer. Flailing hardware can cause serious injury or death.

Section 3 - Pre-installation Checks and Options

3.1 Checklist

- Check the model and size of the belt trainer. Is it the right one for your beltline?
- Check the PT Max™ to be sure all the parts are included in the shipment.
- Find the Information Packet in the shipment.
- Review the “Tools Needed” section on the front of the installation instructions.
- Prepare the conveyor site:
 - Identify the point(s) of mistracking, expecting 150' - 200' (45-61M) of downstream influence.
 - Position the unit 20' after the start of the mistracking.
 - Identify the existing idler set where PT Max will be installed
 - Remove old tracking devices.
 - If the conveyor has disc idlers, replace one idler before and on idler after the location where the trainer will be installed with a standard idler.

3.2 Optional Installation Accessories

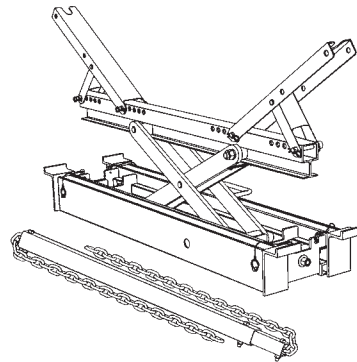
Optional tools can make the installation of the PT Max™ Belt Trainer easier and faster.

Flex-Lifter™ Conveyor Belt Lifter

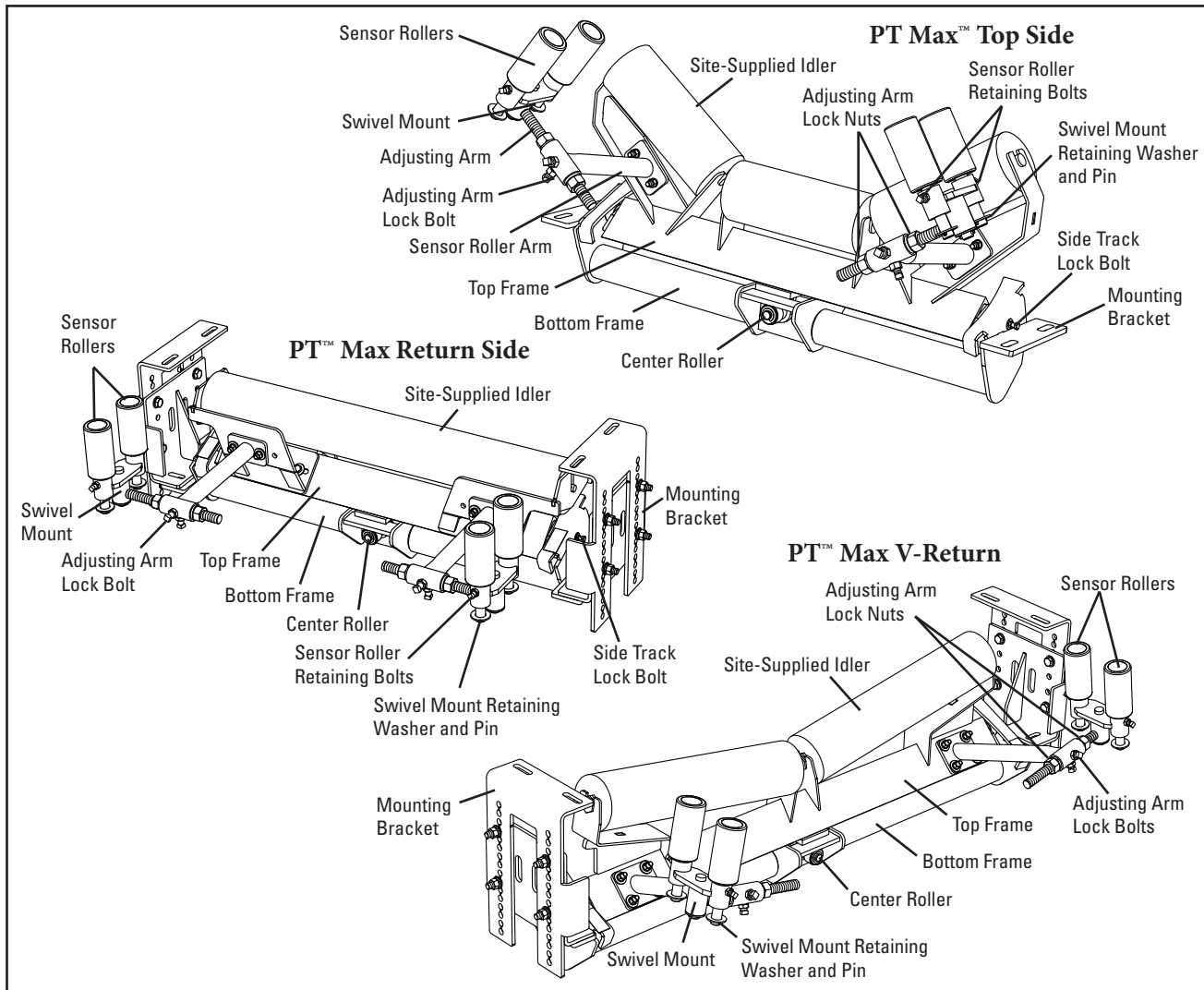
Description	Ordering Number	Item Code
Medium Flex-Lifter 36" - 60" (900 - 1500 mm)	FL-M	76469
Large Flex-Lifter 48" - 72" (1200 - 1800 mm)	FL-L	76470
XL Flex-Lifter 72" - 96" (1800-2400 mm)	FL-XL	76983

Flex-Lifter™ Conveyor Belt Lifter

The Flexco® Flex-Lifter makes the job of lifting the conveyor belt easy and safe. Using two Flex-Lifters, the belt can be quickly lifted out of the way to install the PT Smart™. The Flex-Lifter has the highest safe lift rating available at 4000 lbs. (1810 kg) for Medium and Large, and 6000 lbs. (2750kg) for XL. And it's versatile. It can also be used to lift topside or return side belt for splicing, idler replacement or other maintenance jobs. Available in three sizes: Medium for belt widths 36" - 60" (900 - 1500mm), Large for belt widths 48" - 72" (1200 - 1800mm), and XL for belt widths 72" - 96" (1800 - 2400mm).



Section 4 - Installation Instructions - PT Max™



Physically lock out and tag the conveyor at the power source before you begin cleaner installation.

Before You Begin:

- These instructions are designed to be used when installing either the Top Side, Return Side, or V-Return models.
- A serial number plate is located on the top frame of the unit. This serial number identifies the specifications of this custom-built unit. Please use this number in any correspondence.
- The PT Max™ has been purposely designed with a much heavier construction than conventional tracking devices. It is, in most cases, **TOO HEAVY** to manage manually. Please use the necessary mechanical lifting equipment (crane, come-alongs, etc.) for safe installation.
- After the idler(s) (troughing or return) have been installed in the trainer, secure the idler(s) per the instructions to prevent them from falling out while the unit is being lifted into position on the conveyor.
- The trainer should not be positioned closer than 20 feet (6M) from the tail pulley, take-up pulleys, or head pulley.
- Follow all safety precautions when using a cutting torch.

Tools Needed:

- Tape Measure
- 3/4" Wrench
- Medium or Large Adjustable Wrench
- (2) Pipe Wrenches
- Power Drill (1/4" Drill Bit is Supplied)
- Cutting Torch
- (2) Come-Alongs (3/4 Ton Minimum)
- Any necessary equipment for moving and lifting heavy components

Section 4 - Installation Instructions

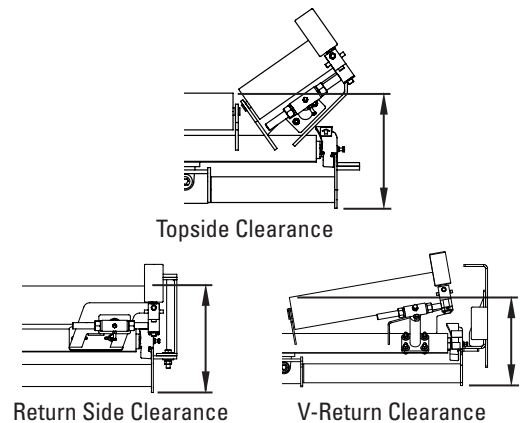
Conveyor Site Preparation

1. **Lift the belt where the trainer will be installed.** At the site where the trainer will be installed, lift the belt 2" (50mm) off the troughing idler set or the return idler that will be replaced. **CAUTION:** Some lifting equipment or tools may be required depending upon the weight of the belt.
2. **Remove the existing idler.** Unbolt the troughing idler set or return idler and mounting brackets and lift it out of the conveyor. Set the unit nearby so the idlers can be used in the new trainer to be installed. **NOTE:** If the conveyor has disc idlers, replace one idler before and on idler after the location where the trainer will be installed with a standard idler.
3. **Verify clearance for the lower sections of the PT Max™ where it is to be located on the conveyor (Fig. 1).** With site engineer's approval, remove any obstructions such as structure supports or separation pans.

Fig. 1

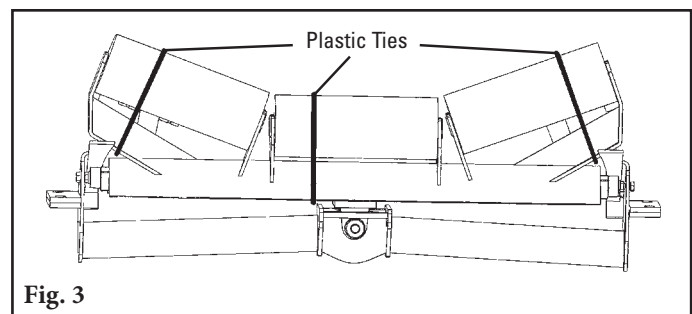
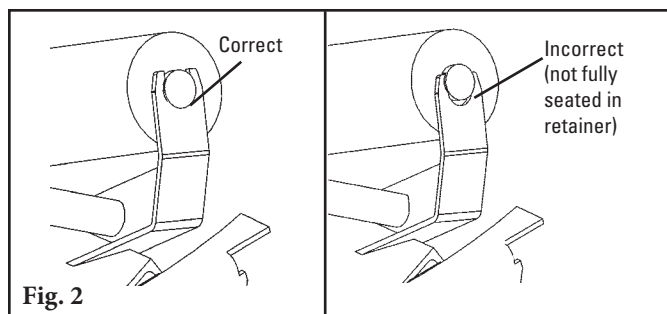
PT Max Minimum Clearance Required (top of roller to bottom of unit)

ROLL DIAMETER		TOPSIDE				RETURN SIDE				V-RETURN			
		Standard		Heavy-Duty		Standard		Heavy-Duty		Standard		Heavy-Duty	
in.	mm	in.	mm	in.	mm	in.	mm	in.	mm	in.	mm	in.	mm
5"	127	16"	406	17"	432	17"	432	18"	457	16"	406	17"	432
6"	152	17"	432	18"	457	18"	457	19"	483	17"	432	18"	457
7"	178	18"	457	19"	483	19"	483	20"	508	18"	457	19"	483

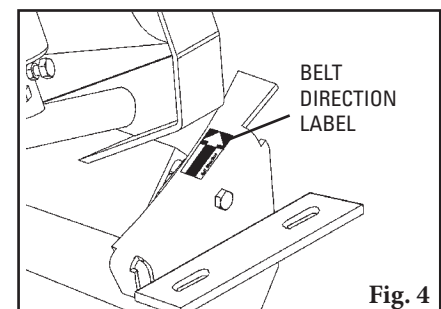


PT Max™ Preparation and Installation on the Conveyor

1. **Remove the sensor rollers from the box.** Pull the components out of the box and set aside for installation after the unit is installed on the conveyor.
2. **Install the troughing idlers or return idler (Fig. 2).** Use the idlers from the set removed during site preparation or from on-site inventory. Important: The PT Max has been expressly designed to use the same idlers that are currently in use on the conveyor. For maximum results the idlers must match the type in use.



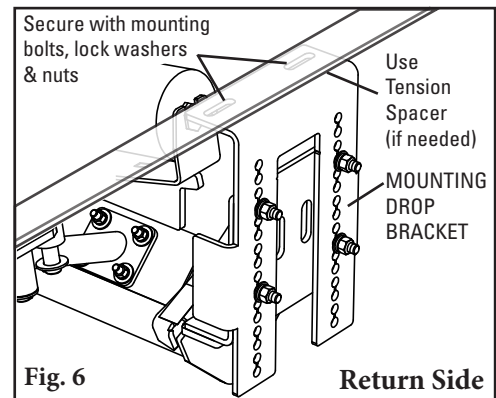
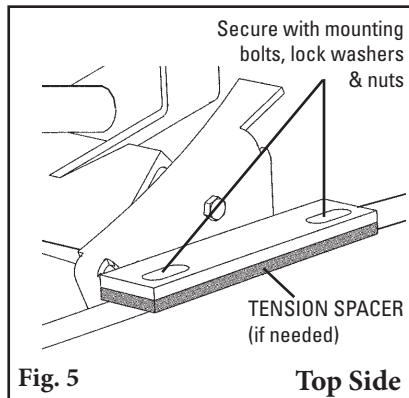
3. **Secure the idler(s) in the unit.** Use the plastic ties supplied to insure the idlers do not become dislodged when the unit is moved or lifted (Fig. 3). Failure to secure the idler(s) may result in serious injury if an idler falls out.
4. **Move the unit into position on the conveyor.** Locate the trainer on the conveyor where the idler was removed. Check that the belt direction labels are pointing in the direction of belt travel (Fig. 4).



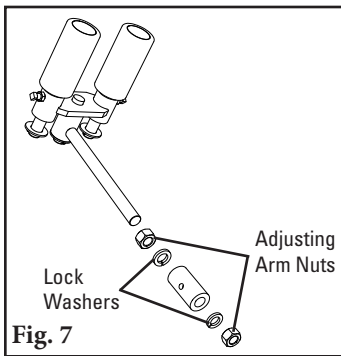
Section 4 - Installation Instructions

5. Secure to the conveyor structure.

Square the unit with the structure. Insert the tension spacer if needed for 1/2" (13mm) of additional height adjustment (**Fig. 5**). Tension spacers are also included with Return Side trainers; drop bracket hole spacing is 1" (25mm) (**Fig. 6**). Secure the unit to the structure with mounting bolts, lock washers and nuts and tighten.



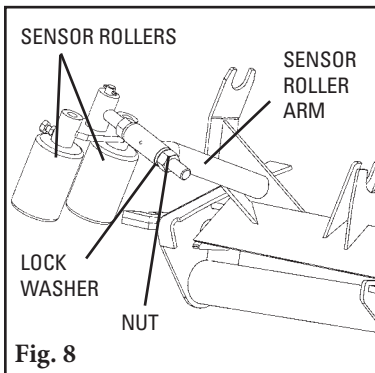
6. Lower the belt onto the trainer.



Adjustment to the Belt

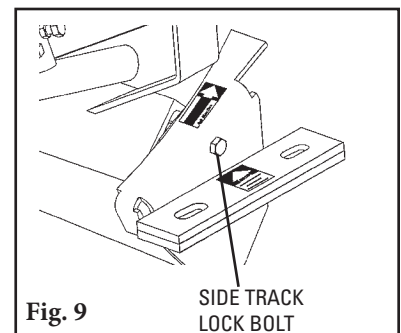
1. **Insert sensor rollers into the unit.** Insert the sensor roller assemblies into the sensor roller arms in the working (outward) position (**Fig. 7 and 8**). Assemble the lock washers and nuts finger tight, allowing the sensor rollers to hang down.

2. **Remove the side track lock bolt (Fig. 9).** This bolt keeps the unit from pivoting during installation. It must now be removed to allow the unit to pivot and tilt for belt training.



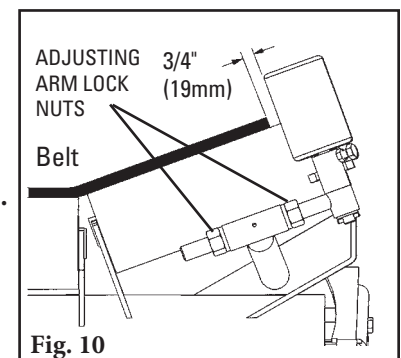
3. **Check for clearance as the unit moves.**

Pivot the unit in both directions to ensure there are no obstructions to movement. **NOTE:** It may be difficult to manually move the heavy-duty or super-duty models due to the weight of the belt.



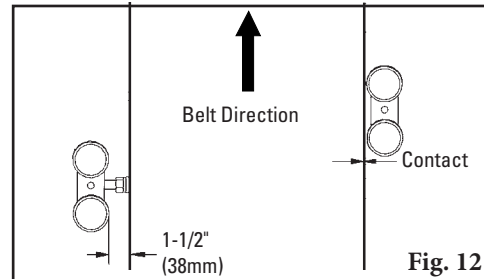
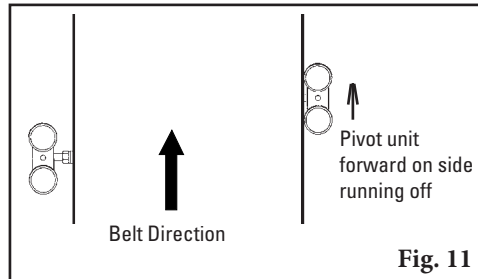
4. **Adjust unit to the belt.** **NOTE:** Final adjustments of the trainer to the beltline depend on where the belt is currently running on the structure. If the belt is running centered on the structure see Option 1, if it is not centered on the structure use the adjustment steps in Option 2.

Option 1 (Belt centered on structure): Position the sensor rollers to the belt edges. Rotate the sensor rollers into the upright position and adjust to 3/4" (19mm) from the belt edges by using the adjusting arm nuts (**Fig. 10**).



Section 4 - Installation Instructions

Option 2 (Belt not centered on structure): Pivot the unit forward on the side the belt is running off (Fig. 11). Rotate the sensor rollers into the upright position and adjust the adjusting arms so the sensor rollers on the side running off are just touching the belt edge and the opposite side sensor rollers have a 1-1/2" (38mm) clearance gap (Fig. 12).

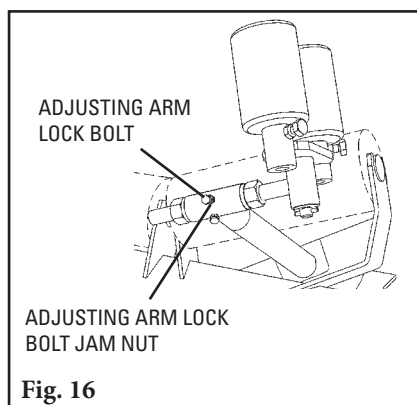
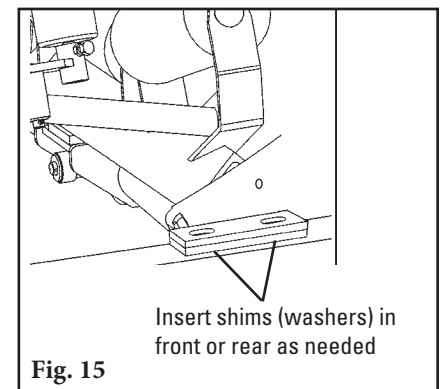
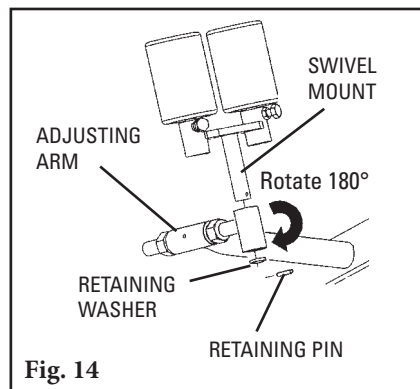
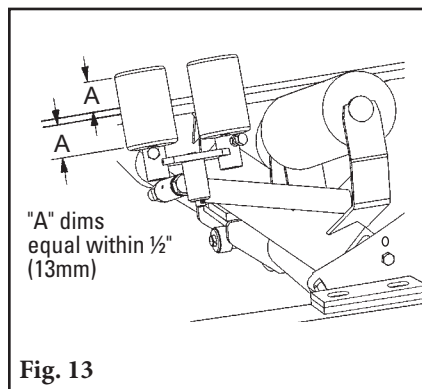


5. **Check the belt's running location on the face of the sensor rollers.** For maximum results, the belt's line of travel must be centered on the face of the sensor rollers within 1/2" (13mm) (Fig. 13).

If the belt is not centered:

Option A. Lower the sensor rollers to center on the belt, or for more clearance if needed (this will lower the sensor rollers 1" (25mm)). Remove the swivel mount retaining pin and retaining washer and slide the swivel mount out of the adjusting arm. Rotate the adjusting arm 180° and reinsert the swivel mount, retaining washers and retaining pin (Fig. 14).

Option B. Shim the unit to lower or raise the sensor rollers in relation to the belt. Insert shims (washers or other material—not supplied) under either the front or rear mounting bolt on both sides of the unit (Fig. 15).



6. **Run the conveyor to verify the training results.** If adjustment is needed, adjust one set of sensor rollers in and the opposite side out an equal amount.

NOTE: If the conveyor has disc idlers, the belt may not get the full downstream tracking effect.

7. **Lock the adjusting arms in place (Fig. 16).** Once the training path has been set and confirmed, loosen the adjusting arm lock bolt jam nut and tighten the adjusting arm lock bolt. Re-tighten the adjusting arm lock bolt jam nut. Repeat on opposite side.

Section 5 - Pre-Operation Checklist and Testing

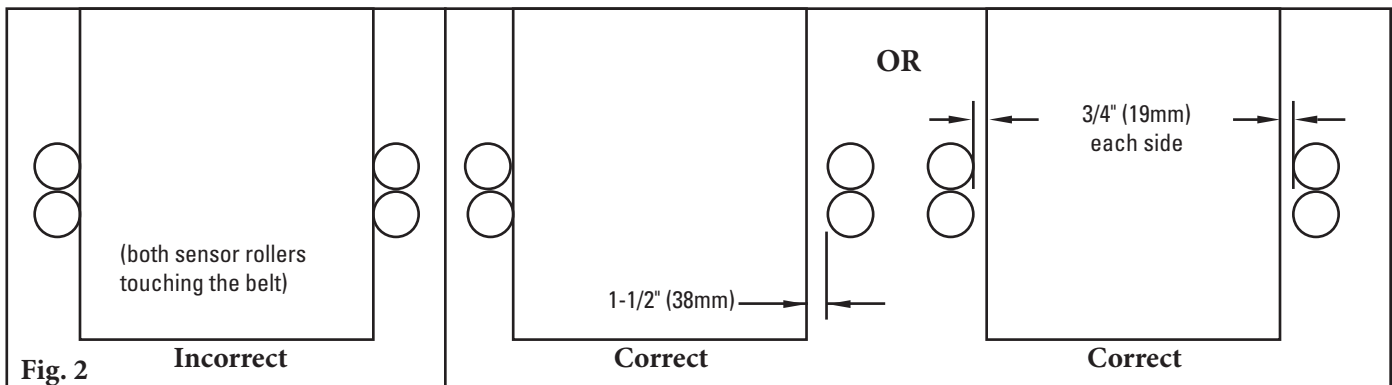
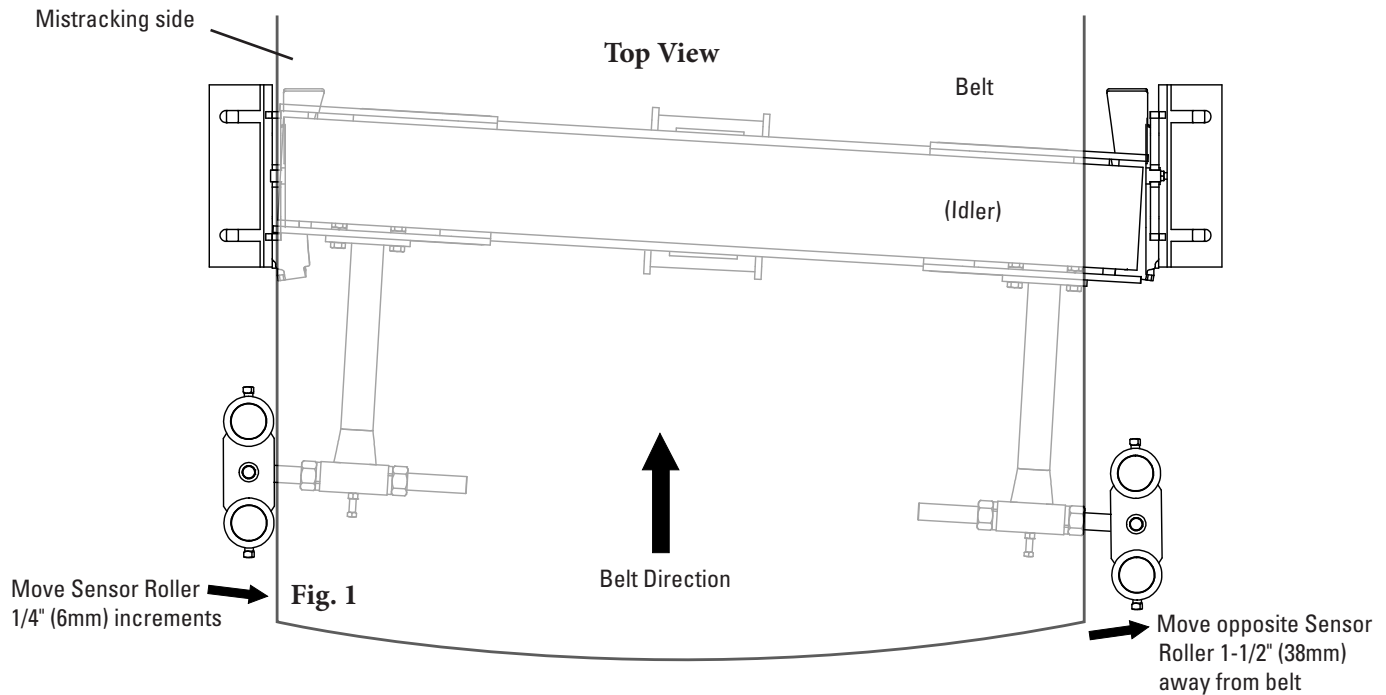
5.1 Pre-Op Checklist

- Recheck that all fasteners are tight
- Apply all supplied labels
- Be sure that all installation materials and tools have been removed from the belt and conveyor area

5.2 Test Run the Conveyor

- Run the conveyor for at least 15 minutes and confirm the belt is tracking properly.
- If belt is still mistracking too far to one side, bring that sensor roller in toward the center. Make adjustments of 1/4" (6mm) at a time (**Fig. 1**). Do not pinch the belt between the sensor rollers - sensor rollers overall should be 1-1/2" (38mm) wider than the belt (**Fig. 2**).

NOTE: If the conveyor has discs idlers, the bely may not get the full downstream tracking effect.



Section 6 - Maintenance

Flexco® belt trainers are designed to operate with minimum maintenance. However, to maintain superior performance some service is required. When the trainer is installed a regular maintenance program should be set up. This program will ensure that the trainer operates at optimal efficiency, and problems can be identified and fixed before any damage is done to the belt, the trainer, other conveyor components, or structure.

All safety procedures for inspection of equipment (stationary or operating) must be observed. The PT Max™ is in direct contact with the moving belt. Only visual observations can be made while the belt is running. Service tasks can be done only with the conveyor stopped and by observing the correct lockout/tagout procedures.

6.1 New Installation Inspection

After the PT Max has run for 15 minutes a visual inspection should be made to ensure the trainer is performing properly. Make adjustments as needed.

6.2 Routine Visual Inspection (every 2-4 weeks)

A visual inspection of the PT Max can determine:

- If the belt is tracking as required
- If the trainer is moving freely
- If the main frame is free of material and rolling properly
- If there is damage to the main frame or other components
- If the sensor rollers are turning freely and without damage

If any of the above conditions exist, a determination should be made on when the conveyor can be stopped for trainer maintenance.

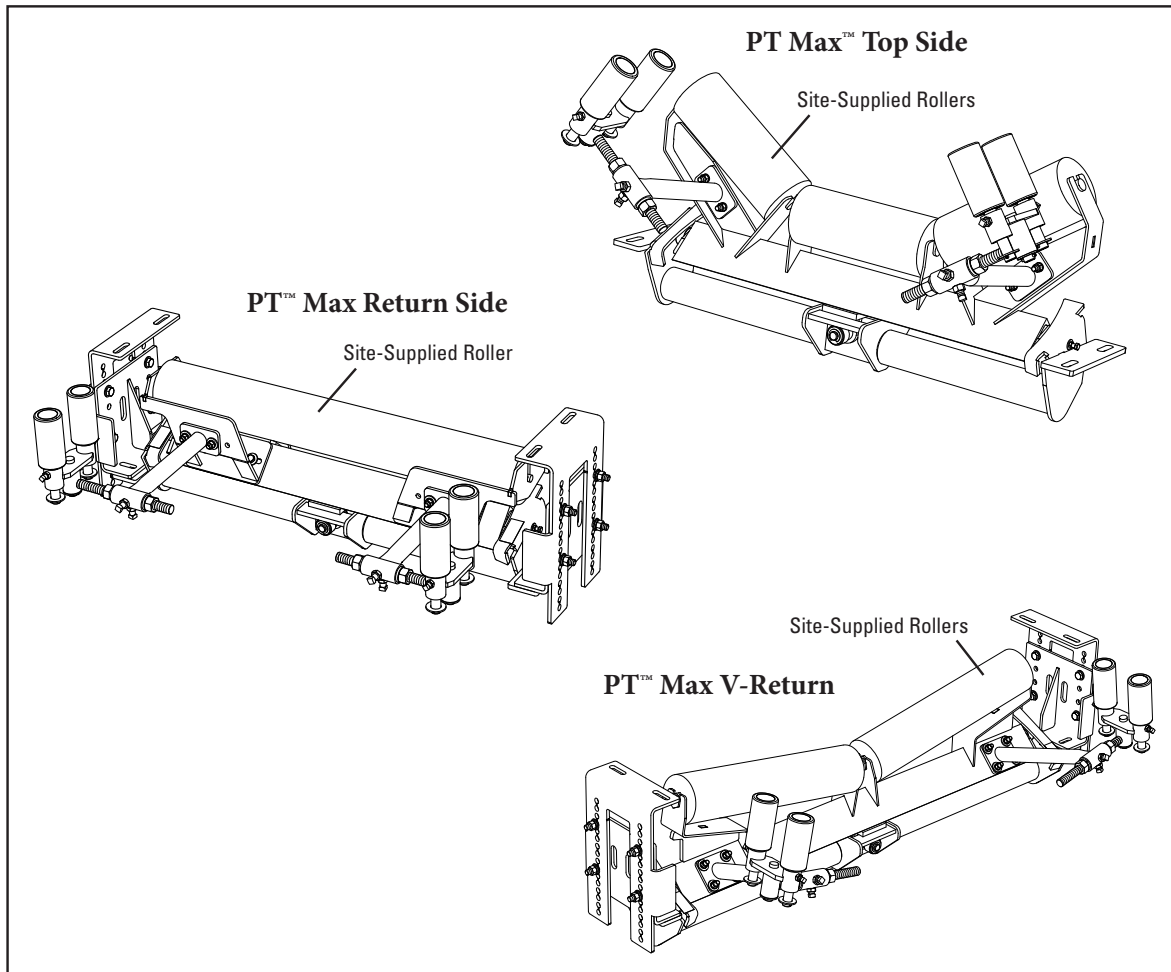
6.3 Routine Physical Inspection (every 6-8 weeks)

When the conveyor is not in operation and properly locked and tagged out, a physical inspection of the trainer to perform the following tasks:

- Clean material buildup off the trainer and components.
- Closely inspect both sensor rollers for free movement and wear. Replace if needed.
- Closely inspect main idler for free movement and wear. Replace if needed.
- Pivot unit to ensure full and easy movement.
- Closely inspect complete unit for damage.
- Inspect all fasteners for tightness and wear. Tighten or replace if needed.
- When maintenance tasks are completed, test run the conveyor to ensure the trainer is performing properly.

Section 6 - Maintenance

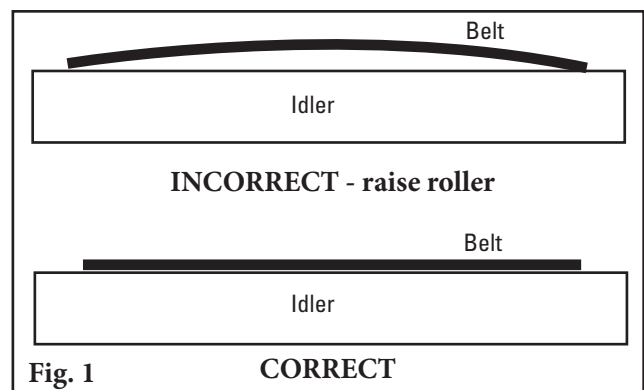
6.4 Idler Replacement Instructions



Physically lock out and tag the conveyor at the power source before you begin cleaner installation.

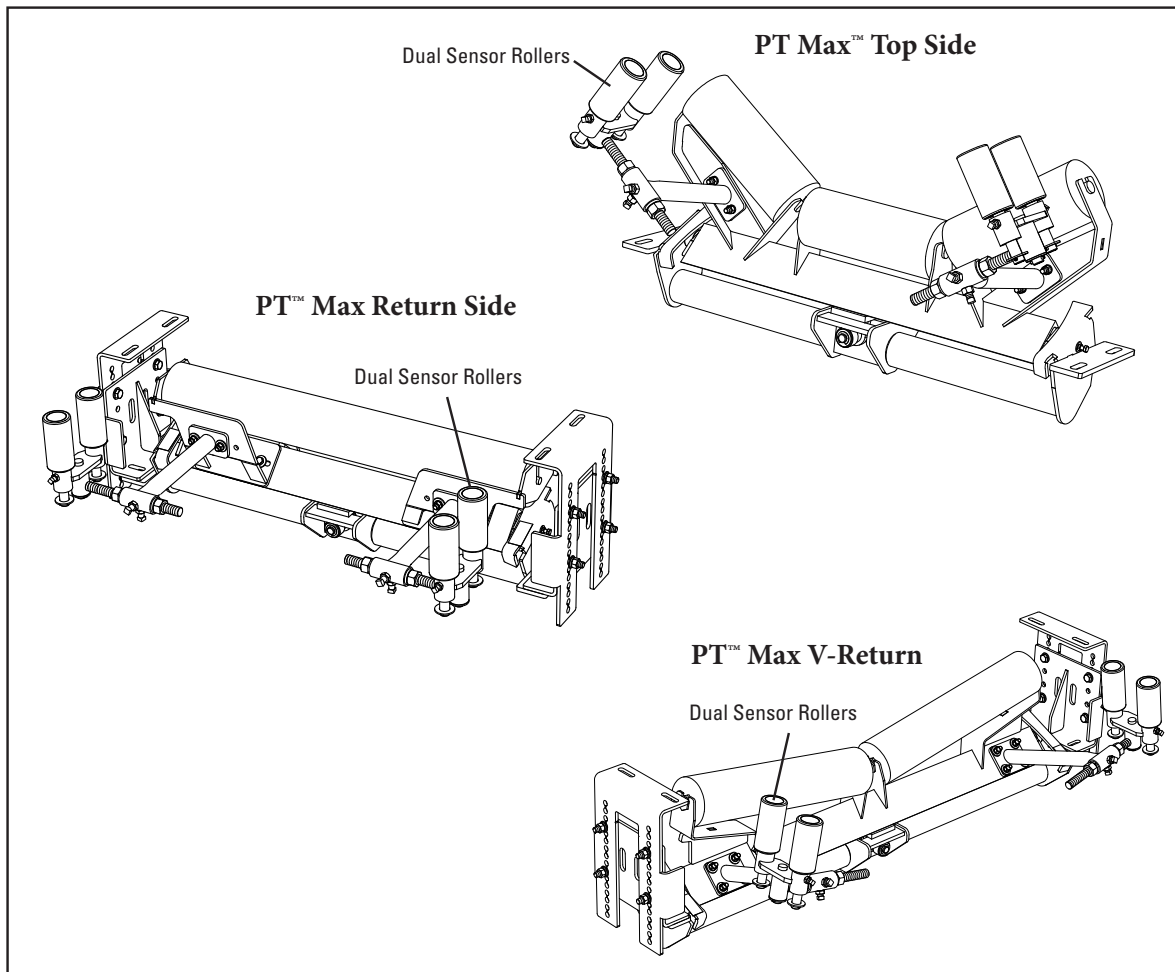
CAUTION: Components may be heavy. Use safety-approved lifting procedures.

1. **Remove tension from belt.** Use a Flex-Lifter or other appropriate lifting equipment to lift the belt approx. 3" (75mm) off the trainer.
2. **Remove idler(s)** per manufacturer's specifications (site supplied).
3. **Install new idler(s)** per manufacturer's specifications (site-supplied). Confirm idler turns smoothly.
4. **Lower the belt.** Ensure belt completely contacts idler(s). Shim the unit to raise or lower in relation to the belt if there is not good contact (**Fig. 1**). Tighten all bolts.
5. Go to page 10 "Adjustment to the Belt."



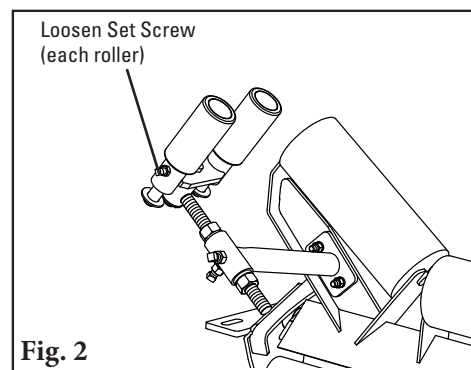
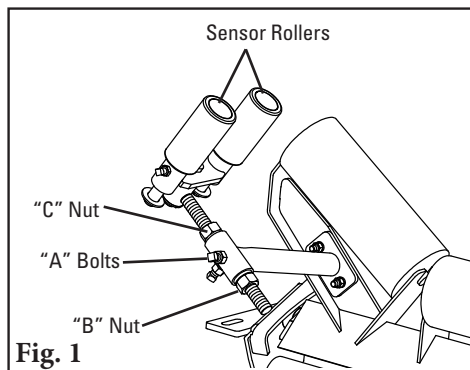
Section 6 - Maintenance

6.5 Sensor Roller Replacement Instructions



Physically lock out and tag the conveyor at the power source before you begin cleaner installation.

1. Loosen “A” bolts, turn “B” nut to the end of the rod then turn “C” nut to move sensor rollers away from the belt (Fig. 1).
2. Loosen set screws at base of sensor rollers and remove from adjuster arm (Fig. 2).
3. Install new sensor rollers, retighten set screws.
4. Go to page 10 “Adjustment to the Belt.”



Section 6 - Maintenance

6.6 Maintenance Log

Conveyor Name/No. _____

Date: _____ Work done by: _____ Service Quote #: _____

Activity: _____

Date: _____ Work done by: _____ Service Quote #: _____)

Activity: _____

Date: _____ Work done by: _____ Service Quote #: _____)

Activity: _____

Date: _____ Work done by: _____ Service Quote #: _____)

Activity: _____

Date: _____ Work done by: _____ Service Quote #: _____)

Activity: _____

Date: _____ Work done by: _____ Service Quote #: _____)

Activity: _____

Date: _____ Work done by: _____ Service Quote #: _____)

Activity: _____

Section 6 - Maintenance

6.7 Belt Trainer Maintenance Checklist

Site: _____ Inspected by: _____ Date: _____

PT Max™: _____ Serial Number: _____

Beltline Information:

Beltline Number: _____ Belt Condition: _____

Belt Width: 24" 30" 36" 42" 48" 54" 60" 72" 84"
 ☐ 600mm ☐ 750mm ☐ 900mm ☐ 1050mm ☐ 1200mm ☐ 1350mm ☐ 1500mm ☐ 1800mm ☐ 2400mm

Belt Speed: _____ Belt Thickness: _____

Idler Roller Life:

Date Roller Installed: _____ Date Roller Inspected: _____ Estimated Roller Life: _____

Roller Condition: _____

Sensor Roller Life (Right Side):

Date Roller Installed: _____ Date Roller Inspected: _____ Estimated Roller Life: _____

Roller Condition: _____

Sensor Roller Life (Left Side):

Date Roller Installed: _____ Date Roller Inspected: _____ Estimated Roller Life: _____

Roller Condition: _____

PT Max Frame Condition: ☐ Good ☐ Bent ☐ Rusted

Overall PT Smart Performance: (Rate the following 1 - 5, 1=very poor - 5= very good)

Appearance: ☐ Comments: _____

Location: ☐ Comments: _____

Maintenance: ☐ Comments: _____

Performance: ☐ Comments: _____

Other Comments: _____

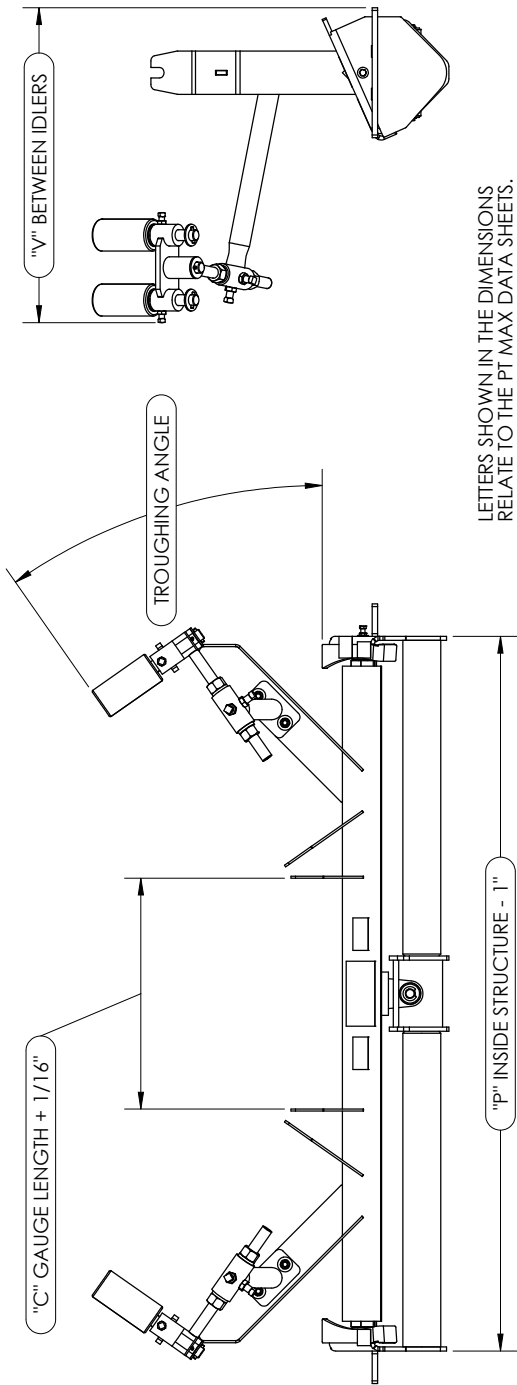
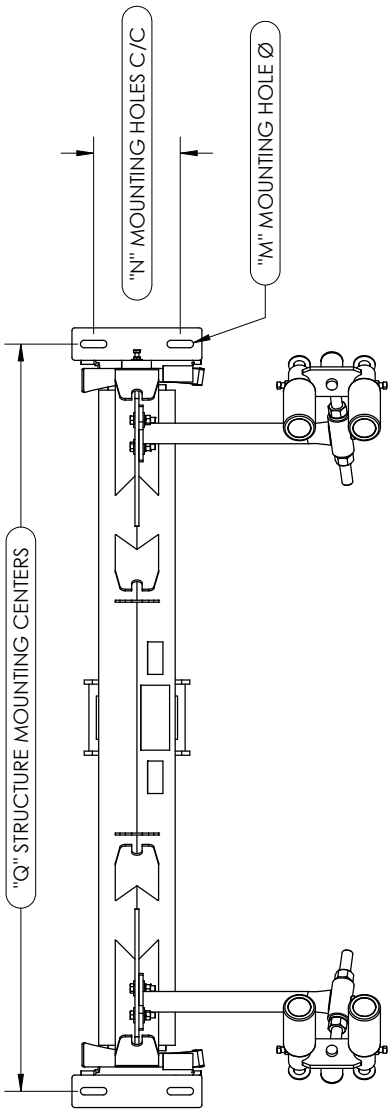
Section 7 - Troubleshooting

Problem	Possible Cause	Possible Solutions
Little to no effect on trouble area of belt	Unit installed in wrong location	Relocate unit 20' (6M) after start of problem area of belt
	Incorrect tension on unit	Increase height of unit to provide 1/2" - 1" (13-25mm) lift on belt
	Unit mis-adjusted	Adjust sensor roller to provide more activation of unit
	Buildup on main idler	Clean unit
Belt not correcting enough	Unit mis-adjusted	Adjust sensor roll to provide more activation of unit
	Disc idlers on conveyor	Replace one disc idler before and one after the trainer with a standard idler
Belt moving over too much	Unit mis-adjusted	Adjust sensor roll to provide less activation of unit
Belt is jumping sensor roll	Unit located too low in structure	Increase height of unit to provide 1/2" - 1" (13-25mm) lift on belt
Belt contacting both side sensors	Unit mis-adjusted	Adjust sensors to provide the 3/4" (19mm) clearance so both sensors do not touch belt
Unit does not pivot	Buildup of material	Clean unit
Main roller not turning	Buildup on main idler	Clean unit
	Main idler bearing bad	Replace idler roller

Section 8 - Specs and CAD Drawings

8.1 CAD Drawing - PT Max™ Top Side

SPECIFICATIONS		
BELT WIDTH (in)	ORDER NUMBER	ITEM CODE
24	PTM24T	75583
30	PTM30T	74885
36	PTM36T	74886
42	PTM42T	74887
48	PTM48T	74888
54	PTM54T	74889
60	PTM60T	74890

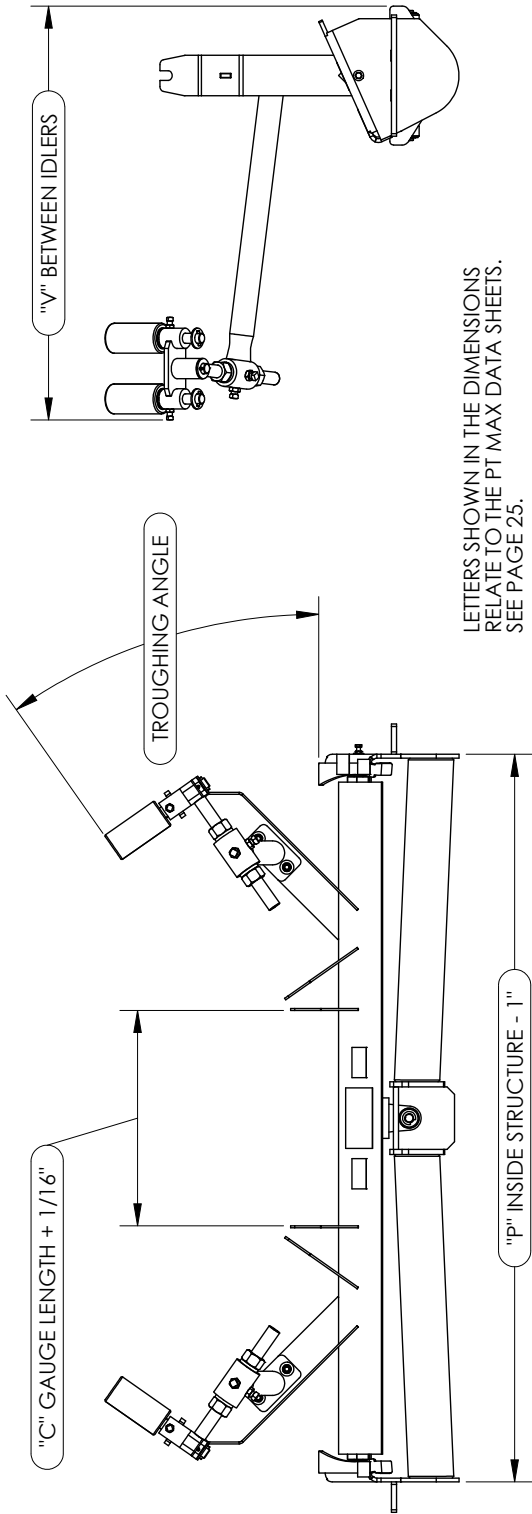
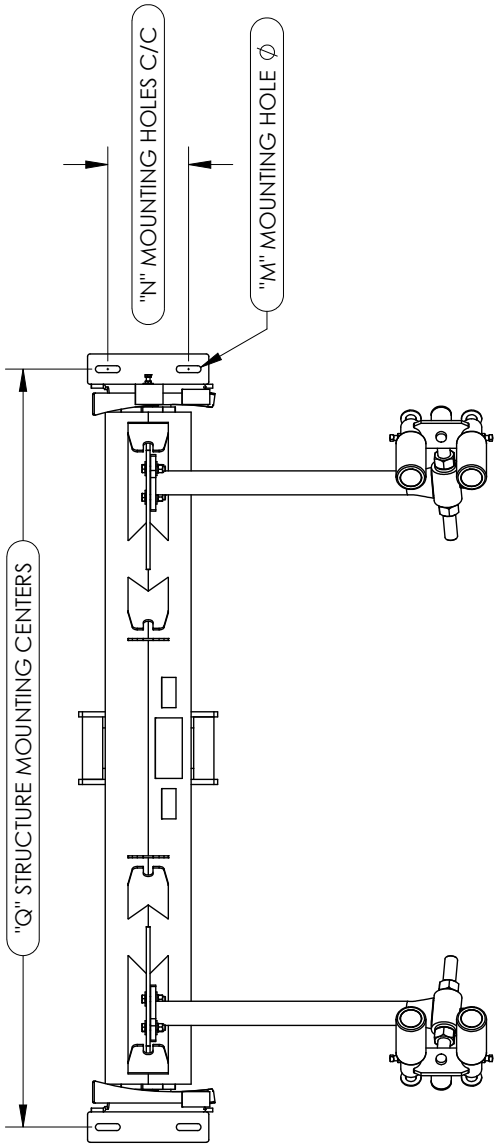


LETTERS SHOWN IN THE DIMENSIONS
RELATE TO THE PT MAX DATA SHEETS.
SEE PAGE 25.

Section 8 - Specs and CAD Drawings

8.2 CAD Drawing - PT Max™ Top Side HD

SPECIFICATIONS			
BELT WIDTH 'A' (in)	ORDER NUMBER	ITEM CODE	
54	PTMHD54TI	74891	
60	PTMHD60TI	74892	
72	PTMHD72TI	74893	
84	PTMHD84TI	74894	

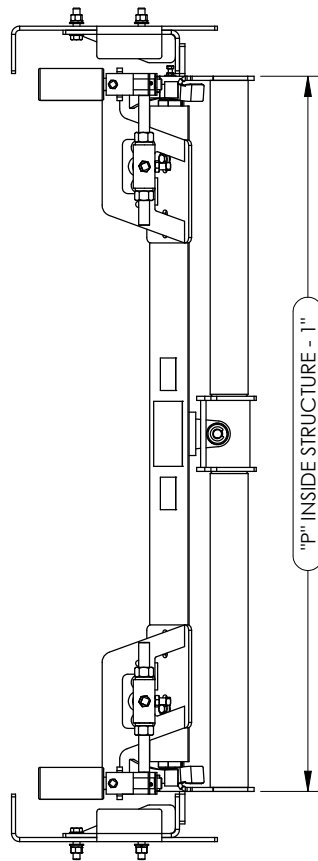
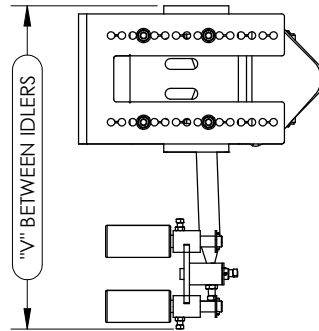
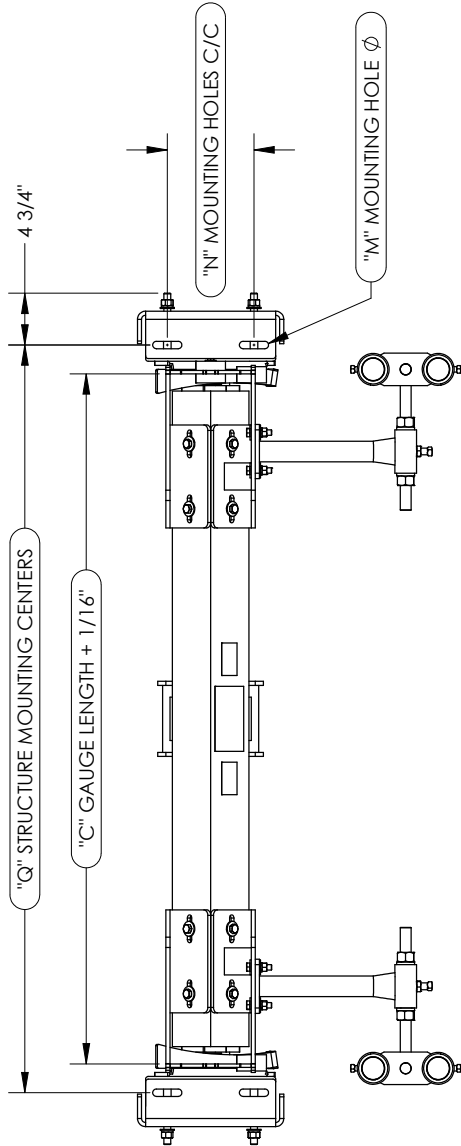


LETTERS SHOWN IN THE DIMENSIONS
RELATE TO THE PT MAX DATA SHEETS.
SEE PAGE 25.

Section 8 - Specs and CAD Drawings

8.3 CAD Drawing - PT™ Max Return

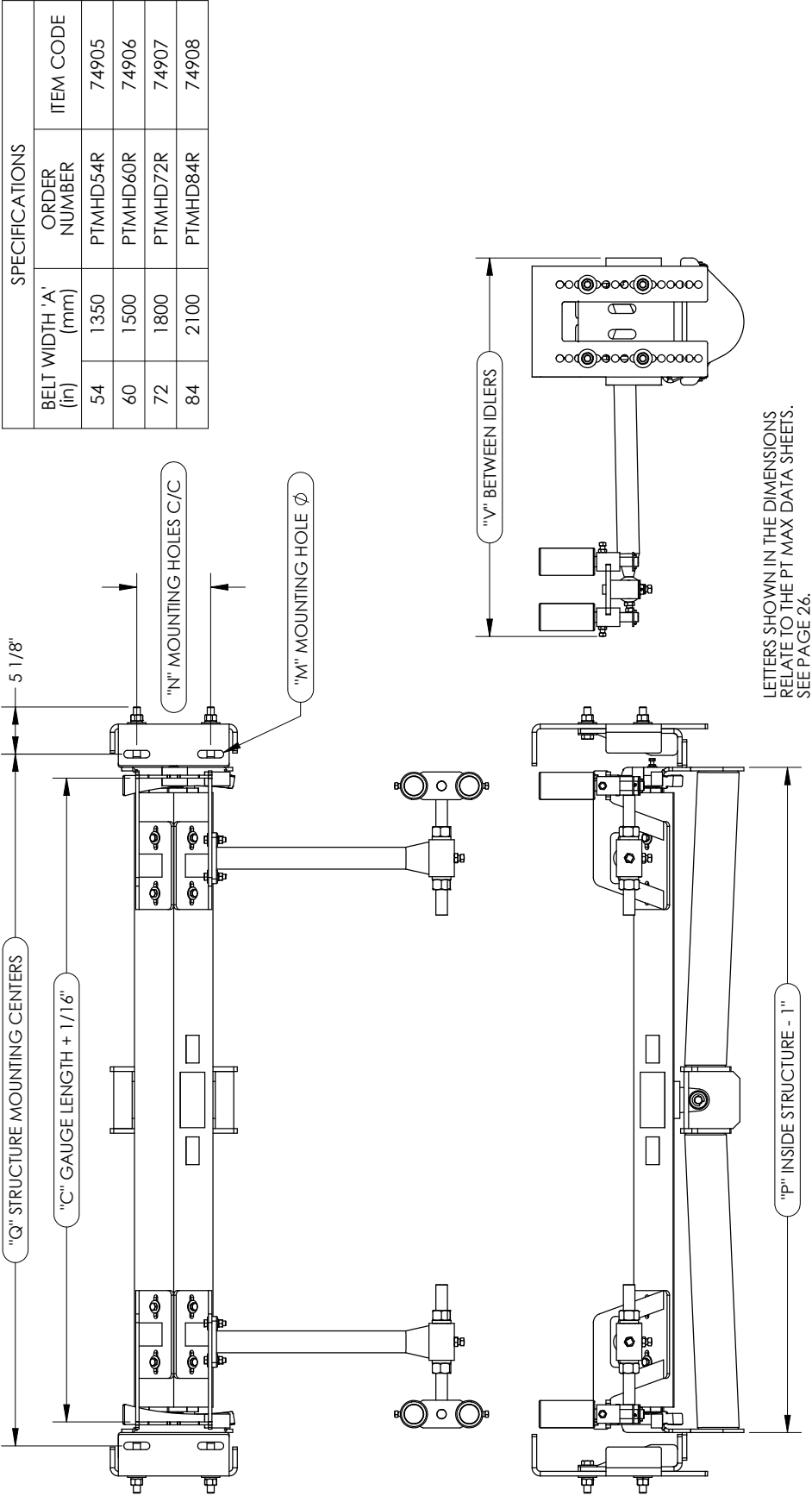
SPECIFICATIONS		
BELT WIDTH 'A' (in)	ORDER NUMBER	ITEM CODE
24	PTM24R	75584
30	PTM30R	74899
36	PTM36R	74900
42	PTM42R	74901
48	PTM48R	74902
54	PTM54R	74903
60	PTM60R	74904



LETTERS SHOWN IN THE DIMENSIONS
RELATE TO THE PT MAX DATA SHEETS.
SEE PAGE 26.

Section 8 - Specs and CAD Drawings

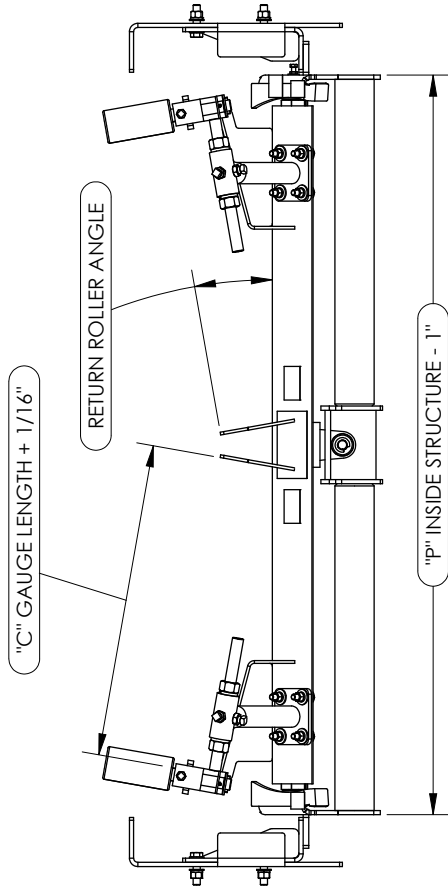
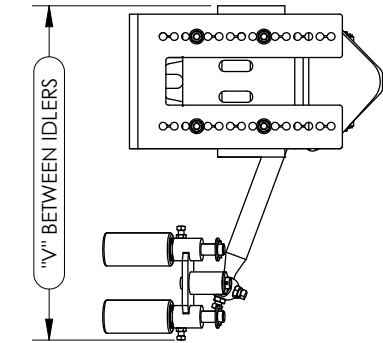
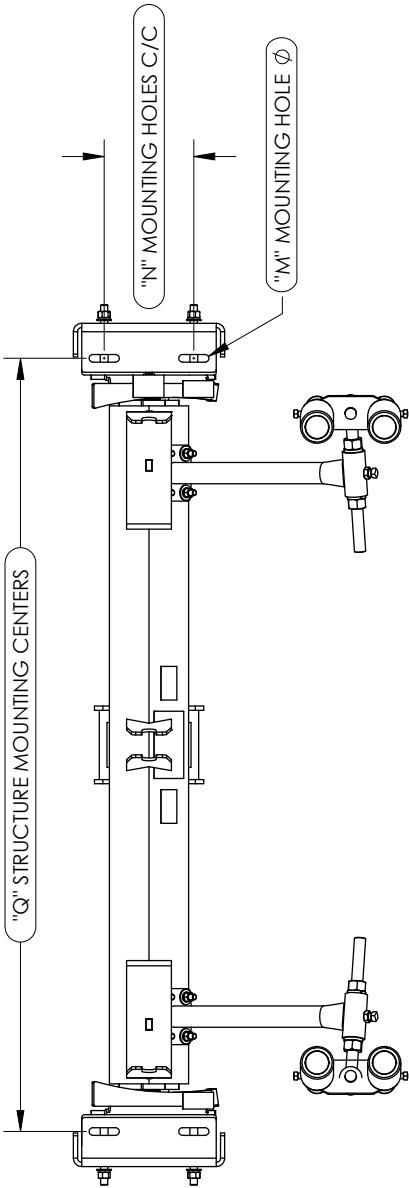
8.4 CAD Drawing - PT Max™ Return HD



Section 8 - Specs and CAD Drawings

8.5 CAD Drawing - PT Max™ V-Return

SPECIFICATIONS			ITEM CODE
BELT WIDTH 'A' (in)		ORDER NUMBER	
24	600	PTMSTD24VR	79669
30	750	PTMSTD30VR	79670
36	900	PTMSTD36VR	79671
42	1050	PTMSTD42VR	79672
48	1200	PTMSTD48VR	79673
54	1350	PTMSTD54VR	79674
60	1500	PTMSTD60VR	79675

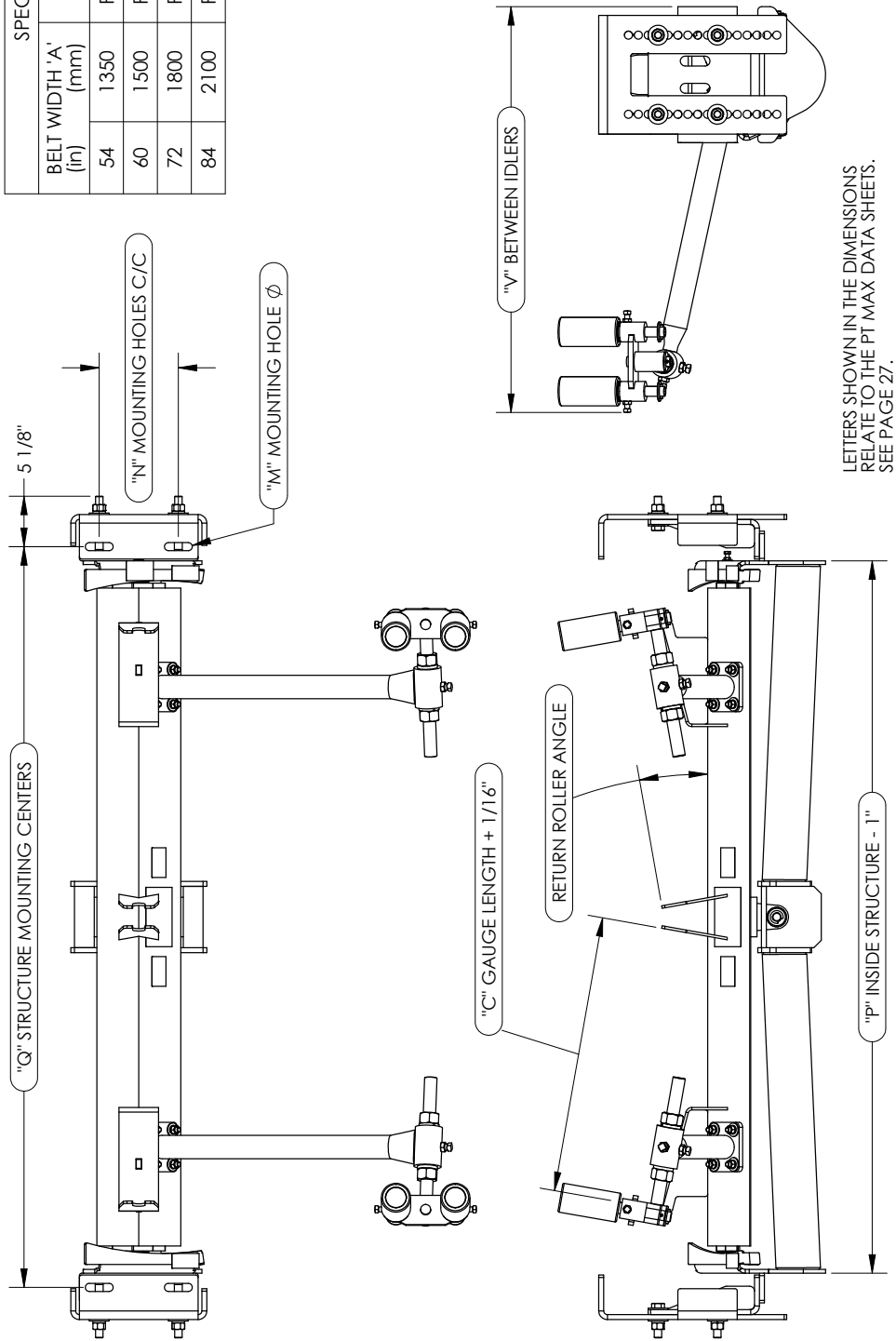


LETTERS SHOWN IN THE DIMENSIONS
RELATE TO THE PT MAX DATA SHEETS.
SEE PAGE 27.

Section 8 - Specs and CAD Drawings

8.6 CAD Drawing - PT Max™ V-Return HD

SPECIFICATIONS		
BELT WIDTH 'A' (in)	ORDER NUMBER	ITEM CODE
54	PTMHD54VR	79665
60	PTMHD60VR	79666
72	PTMHD72VR	79667
84	PTMHD84VR	79668



Section 8 - Specs and CAD Drawings

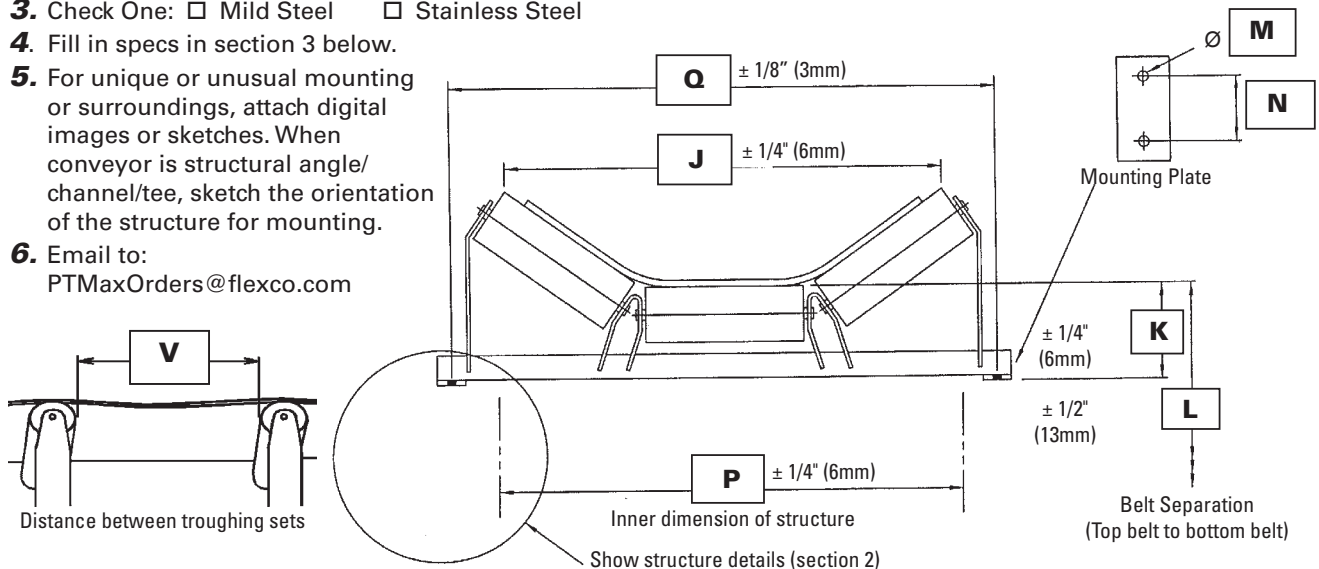
8.7 PT Max™ Top Side Data Sheet

CUSTOMER INFO:

Company Name: _____ Date: _____
 Address: _____ Phone #: _____
 Contact Name: _____ Fax #: _____
 Title/Position: _____ e-Mail: _____
 Conveyor Name: _____ PO #: _____
 Trainer Location: _____ Distributor: _____

INSTRUCTIONS:

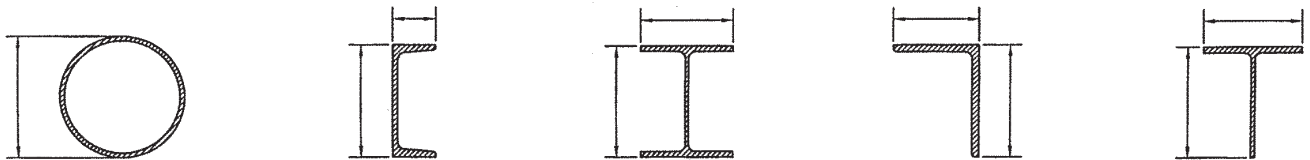
1. Check troughing set type and indicate troughing angle in section 1 below. If you're measuring a location under skirting the PT Max will not work. You need to move further down the conveyor away from the skirting and take measurements there.
2. Circle the conveyor structure type and add dimensions in section 2 below.
3. Check One: ☐ Mild Steel ☐ Stainless Steel
4. Fill in specs in section 3 below.
5. For unique or unusual mounting or surroundings, attach digital images or sketches. When conveyor is structural angle/channel/tee, sketch the orientation of the structure for mounting.
6. Email to: PTMaxOrders@flexco.com



1. Troughing Set Type

☐ Inline Roller ☐ Offset Roller _____° Troughing Angle ☐ Under Skirting

2. Examples of Structure Cross Sections



Questions? Contact Ryan Holowaty at (616) 242-1724 or email rholowaty@flexco.com

3. Conveyor Structure Dimensions

J		N	
K		P	
L		Q	
M		V	

Section 8 - Specs and CAD Drawings

8.8 PT Max™ Return Side Data Sheet

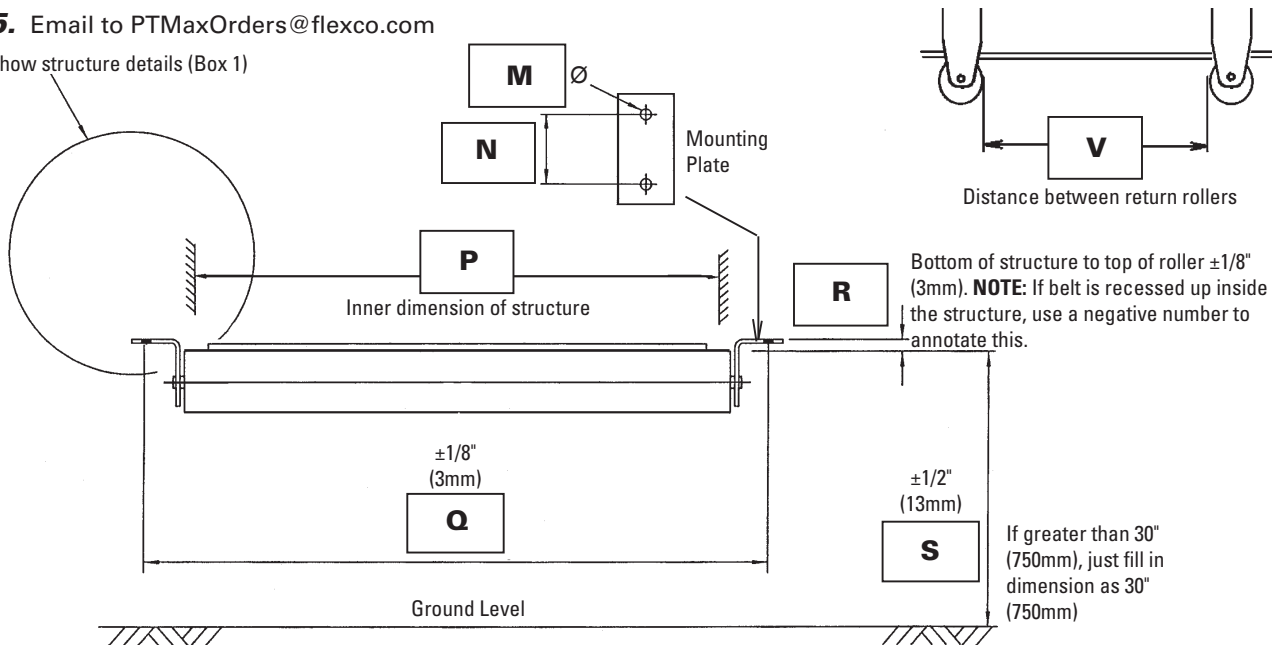
CUSTOMER INFO:

Company Name: _____
 Address: _____ Date: _____
 Phone #: _____
 Contact Name: _____ Fax #: _____
 Title/Position: _____ e-Mail: _____
 Conveyor Name: _____ PO #: _____
 Trainer Location: _____ Distributor: _____

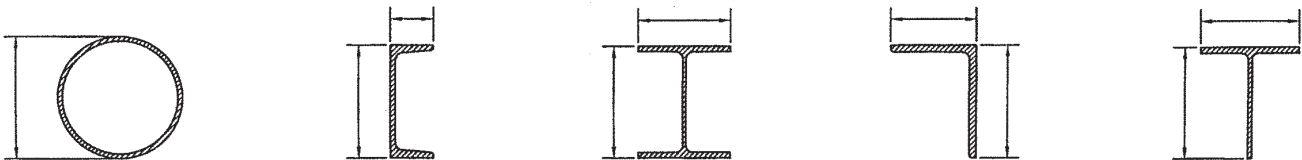
INSTRUCTIONS:

1. Circle the conveyor structure type and add dimensions in section 1 below.
2. Fill in specs in section 2 below.
3. For unique or unusual mounting or surroundings, attach digital images or sketches. When conveyor is structural angle/channel/tee, sketch the orientation of the structure for mounting.
4. Check One: ☐ Mild Steel ☐ Stainless Steel
5. Email to PTMaxOrders@flexco.com

Show structure details (Box 1)



1. Examples of Structure Cross Sections



Questions? Contact Ryan Holowaty at (616) 242-1724 or email rhollowaty@flexco.com

2. Conveyor Structure Dimensions

M		R	
N		S	
P		V	
Q			

Section 8 - Specs and CAD Drawings

8.9 PT Max™ V-Return Side Data Sheet

CUSTOMER INFO:

Company Name: _____

Address: _____ Date: _____

Phone #: _____

Contact Name: _____ Fax #: _____

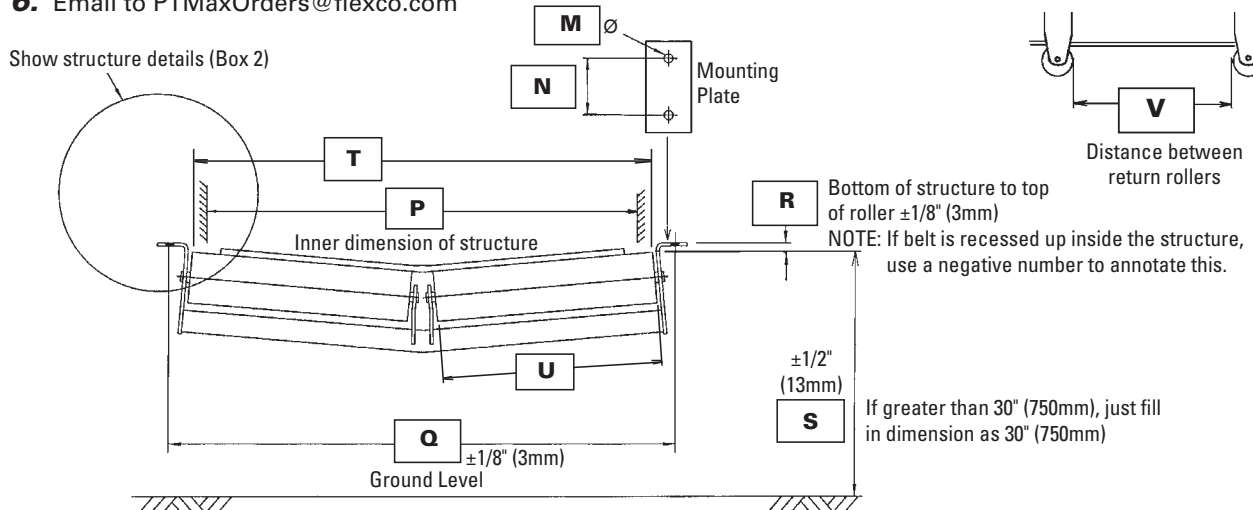
Title/Position: _____ e-Mail: _____

Conveyor Name: _____ PO #: _____

Trainer Location: _____ Distributor: _____

INSTRUCTIONS:

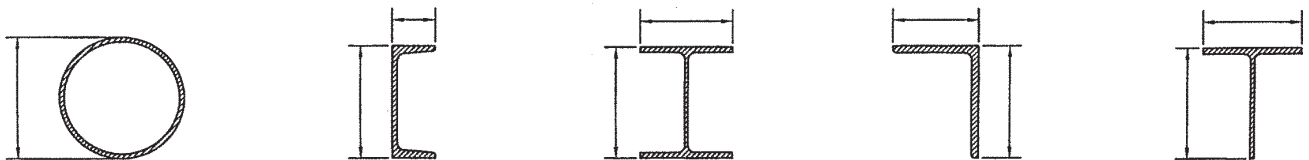
1. Check return idler type and indicate troughing angle in section 1 below.
2. Circle the conveyor structure type and add dimensions in section 2 below.
3. Check One: ☐ Mild Steel ☐ Stainless Steel
4. Fill in specs in section 3 below.
5. For unique or unusual mounting or surroundings, attach digital images or sketches. When conveyor is structural angle/channel/tee, sketch the orientation of the structure for mounting.
6. Email to PTMaxOrders@flexco.com



1. Troughing Set Type

☐ V-Return _____ ° Troughing Angle

2. Examples of Structure Cross Sections



Questions? Contact Ryan Holowaty at (616) 242-1724 or email rhollowaty@flexco.com

3. Conveyor Structure Dimensions

M		S	
N		T	
P		U	
Q		V	
R			

Section 8 - Specs and CAD Drawings

8.10 PT Max™ Roller Data Sheet

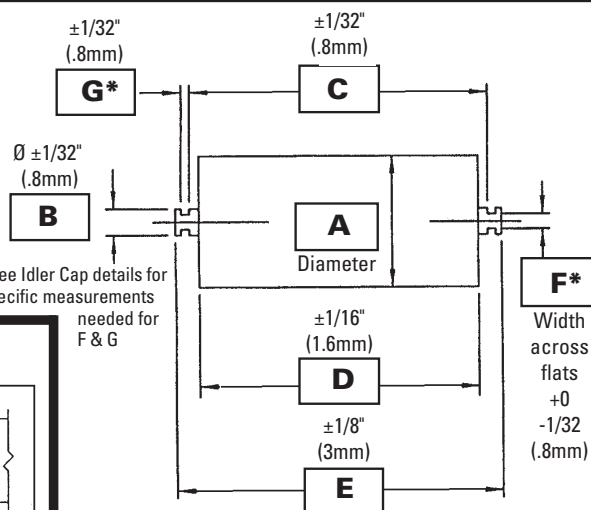
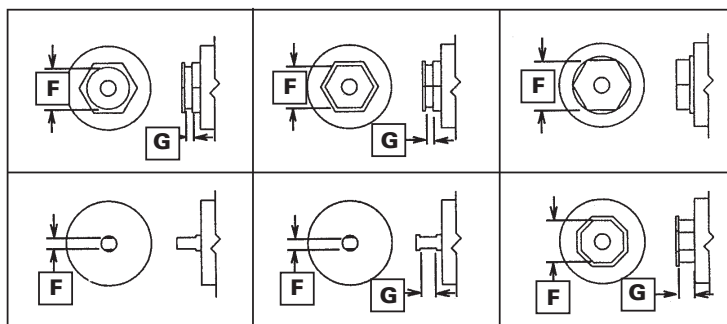
CUSTOMER INFO:

Company Name: _____ Date: _____
 Address: _____ Phone #: _____
 Contact Name: _____ Fax #: _____
 Title/Position: _____ e-Mail: _____
 Conveyor Name: _____ PO #: _____
 Trainer Location: _____ Distributor: _____

INSTRUCTIONS:

1. Circle idler cap type in section 1.
2. Fill in conveyor information in section 2.
3. Fill in roller dimensions specs in section 3.
4. For unique or unusual mounting or surroundings, attach digital images or sketches. When conveyor is structural angle/channel/tee, sketch the orientation of the structure for mounting.
5. Email to PTMaxOrders@flexco.com

1. Idler Cap Type



Questions? Contact Ryan Holowaty at (616) 242-1724 or email rholowaty@flexco.com

2. Conveyor Information

Conveyor Name	
CEMA Rating (if known)	
Belt Thickness	
Belt Width	
Troughing Angle	
Return Roller Angle	
Material Carried	
Number of Rolls in Troughing Set	
Equal/Unequal Trough Rolls (if unequal, do this sheet for each size)	
Roller Brand	

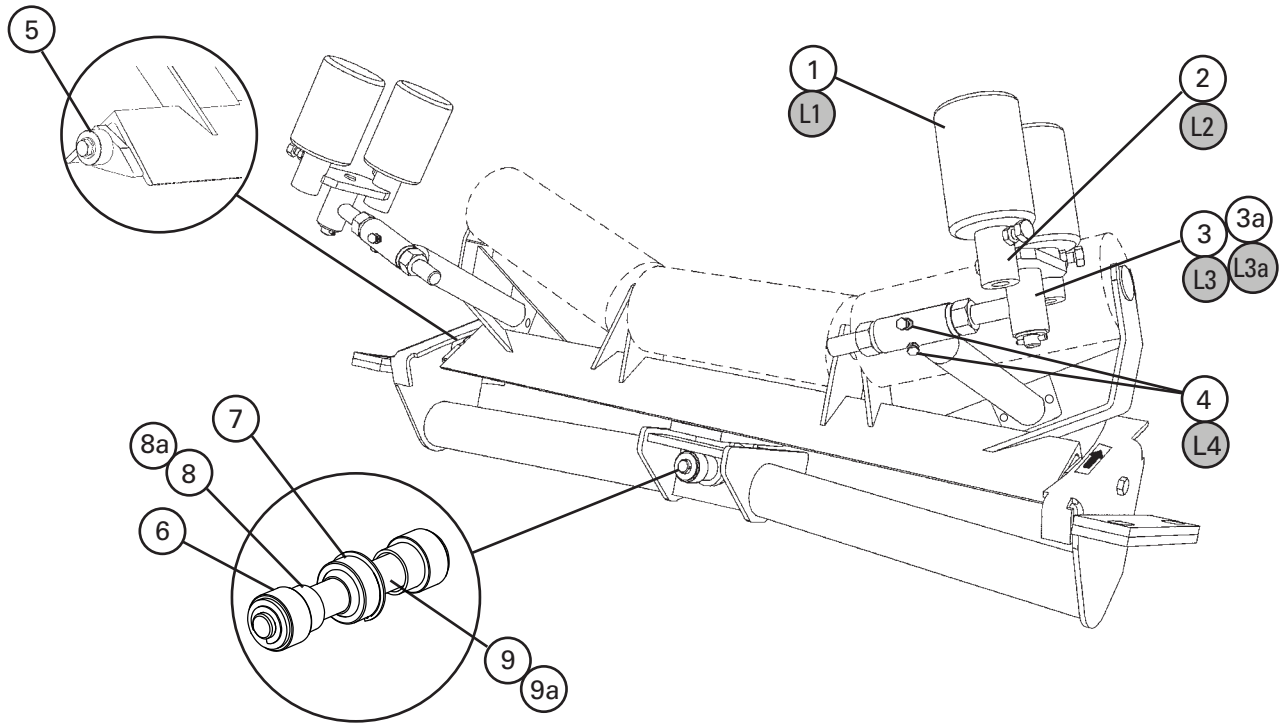
3. Roller Dimensions

Roller dimensions are easily measured from a spare roller not installed in the conveyor system.

A	
B	
C	
D	
E	
F	
G	

Section 9 - Replacement Parts

9.1 Replacement Parts List



Replacement Parts

REF	DESCRIPTION	BELT WIDTH		ORDERING NUMBER	ITEM CODE	WT. LBS.	For PT Max Units Shipped after March 17, 2014 ONLY. See below for legacy replacement parts.
		in.	mm				
1	Sensor Roller 2.0* (3" solid roller) (1 ea.)	30-84	750-2100	MSR2	79378	7.0	
2	Swivel Mount Kit 2.0*	30-84	750-2100	PMSMK2	79380	5.5	
3	Adjusting Arm Kit 2.0*	30-60	750-1500	MAK2	79381	7.9	
3a	HD Adjusting Arm Kit 2.0*	54-84	1350-2100	MAKHD2	79382	14.7	
4	Frame Arm Set Screw Kit HD (incl. 2 set screws and 2 jam nuts)	30-120	750-3000	MFASKHD	79571	0.8	
5	Outer Roller Kit* (incl. 2 rollers, roller thimbles and bolts, nuts and washers)	30-84	750-2100	MORK	74921	2.6	
6	Center Roller Kit* (incl. 2 rollers, 2 washers, and 2 retaining clips)	30-84	750-2100	MCRK	74923	1.2	
7	Center Bearing*	30-84	750-2100	MCB	74925	1.7	
8	Center Shaft Spacer Kit (incl. 2 spacers)	30-60	750-1500	MCSK	74927	0.3	
8a	HD Center Shaft Spacer Kit (incl. 2 spacers)	54-84	1350-2100	MCSKHD	74928	0.5	
9	Center Shaft	30-60	750-1500	MCS	74930	4.0	
9a	HD Center Shaft	54-84	1350-2100	MCSHD	74931	13.0	
-	Center Bearing Kit (incl. 1 ea. items 5, 6, 7, 8)	30-60	750-1500	MCBK	76025	8.0	
-	HD Center Bearing Kit (incl. 1 ea. items 5, 6, 7a, 8a)	54-84	1350-2100	MCBKHD	76026	17.0	

*Hardware included

Lead time: 1 working day

Note: All replacement parts offered are common to all three PT Max models: Top Side, Return Side, and V-Return.

Legacy Replacement Parts - For PT Max Units Shipped Prior to March 17, 2014

REF	DESCRIPTION	BELT WIDTH		ORDERING NUMBER	ITEM CODE	WT. LBS.
		in.	mm			
L1	Sensor Roller* (3" solid roller) (1 ea.)	30-84	750-2100	MSR	74914	7.0
L2	Swivel Mount Kit*	30-84	750-2100	PMSMK	74916	5.5
L3	Adjusting Arm Kit*	30-60	750-1500	MAK	74918	7.9
L3a	HD Adjusting Arm Kit*	54-84	1350-2100	MAKHD	74919	14.7
L4	Frame Arm Set Screw Kit (incl. 2 set screws and 2 jam nuts)	30-120	750-3000	MFASK	75531	0.8

Section 10 - Other Flexco™ Conveyor Products

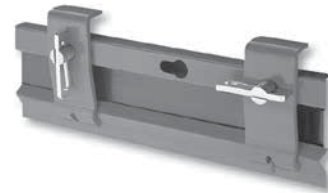
Flexco provides many conveyor products that help your conveyors to run more efficiently and safely. These components solve typical conveyor problems and improve productivity. Here is a quick overview on just a few of them:

EZP1 Precleaner



- Patented ConShear™ blade renews its cleaning edge as it wears
- Visual Tension Check™ for optimal blade tensioning and simple retensioning
- Quick and easy one-pin blade replacement
- Material Path Option™ for optimal cleaning and reduced maintenance

Flex-Lok™ Skirt Clamps



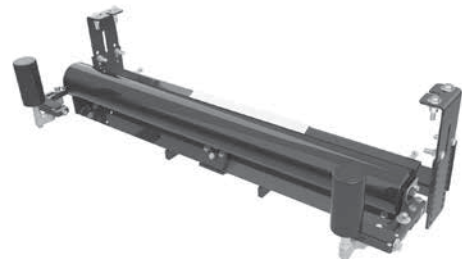
- Eliminates transfer zone spillage
- Interlocking design for easy installation and one-person maintenance
- Unique wedge pin holds rubber securely in place and is easy to adjust
- Available in various models and in stainless steel

MMP Precleaner



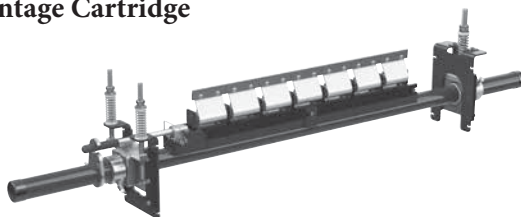
- Extra cleaning power for tough applications
- 10" TuffShear™ blade provides increased blade-to-belt tension
- A 3-piece telescoping pole is lighter to lift and easier to install
- Dual Quick-Mount Tensioners ensure optimal tension throughout the life of the blade

PT Smart™ Belt Trainer



- Patented “pivot & tilt” design for superior training action
- Pivot point guaranteed not to freeze or seize up
- Available for return side belts

MHS Secondary Cleaner with Service Advantage Cartridge



- An easy slide-out cartridge for service
- Cartridge design to speed up blade-change maintenance
- Patented PowerFlex™ Cushions for superior cleaning performance
- Compatible with Flexco mechanical splices

Belt Plows



- A belt cleaner for the tail pulley
- Exclusive blade design quickly spirals debris off the belt
- Economical and easy to service
- Available in vee or diagonal models

The Flexco Vision

To become the leader in maximising
belt conveyor productivity for our customers worldwide
through superior service and innovation.



2525 Wisconsin Avenue • Downers Grove, IL 60515-4200 • USA
Tel: (630) 971-0150 • Fax: (630) 971-1180 • E-mail: info@flexco.com

Visit www.flexco.com for other Flexco locations and products.

©2018 Flexible Steel Lacing Company. 12/04/18. For reorder: X2406

