



ALLIGATOR® Belt Lacing System

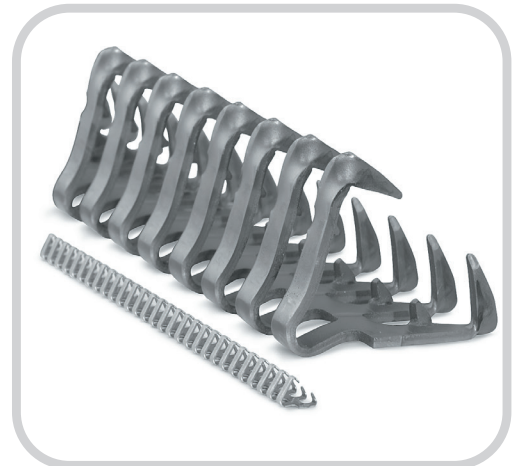
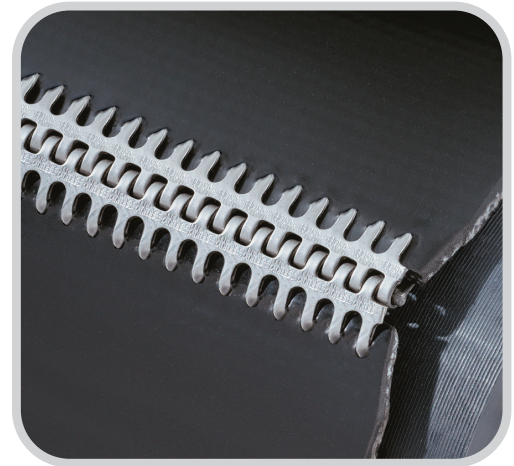
For Easy, Economical Installation of a Low Profile Belt Splice

Alligator® Lacing is available in continuous lengths to fit any belt width and provides uniform tension across the full belt width. The one-piece fastener strip also ensures that there are no loose pieces to work themselves out of the belt and into the conveyed product.

Designed for belts from 1/32" to 1/2" (.8 mm to 12.5 mm)*, Alligator Belt Lacing installation requires no special tools, only a hammer. The lacing is secured with teeth that embed lengthwise on the belt, providing a strong, vise-like hold. Clips hold gauge rod and lacing firmly and squarely against the belt during the installation process to ensure a strong, straight splice. The straight splice also helps ease hinge pin insertion.

Market applications

- Package and Parts Conveying
- Food and Sanitary Contact
- Agricultural Harvesting and Handling
- Recycling and Scrap Handling
- Wood Products



Alligator® Conveyor Belt Lacing Selection Chart

| Lacing Size | For Belts With Mechanical Fastener Rating Up To: | | Belt Thickness Range | | Recommended Minimum Pulley Diameter | | Approx. Corrugated Hinge Pin Diameter | |
|-------------|--|------|----------------------|-------------|-------------------------------------|-----|---------------------------------------|-----|
| | P.I.W. | kN/m | in. | mm | in. | mm | in. | mm |
| | | | | | | | | |
| 00 | 25 | 4.3 | Up thru 1/16 | Up thru 1.6 | 1 | 25 | 3/64 | 1.2 |
| 1 | 45 | 7.8 | 1/16-3/32 | 1.6-2.4 | 1-1/2 | 38 | 1/16 | 1.6 |
| 7 | 50 | 8.7 | 3/32-9/64 | 2.4-3.6 | 2 | 51 | 1/16 | 1.6 |
| 15 | 65 | 11.4 | 1/8-5/32 | 3.2-4.0 | 2-1/2 | 64 | 3/32 | 2.4 |
| 20 | 95 | 16.6 | 5/32-3/16 | 4.0-4.8 | 3 | 76 | 7/64 | 2.8 |
| 25 | 100 | 17.5 | 3/16-7/32 | 4.8-5.6 | 4 | 102 | 1/8 | 3.2 |
| 27 | 100 | 17.5 | 7/32-9/32 | 5.6-7.1 | 5 | 127 | 1/8 | 3.2 |
| 35 | 150 | 26.0 | 9/32-5/16 | 7.1-7.9 | 7 | 178 | 9/64 | 3.6 |
| 45 | 165 | 28.0 | 5/16-3/8 | 7.9-9.5 | 9 | 229 | 3/16 | 4.8 |
| 55 | 175 | 30.0 | 3/8-7/16 | 9.5-11.1 | 12 | 305 | 13/64 | 5.2 |
| 65 | 200 | 35.0 | 7/16-1/2 | 11.1-12.7 | 14 | 356 | 13/64 | 5.2 |

* Alligator Belt Lacing can operate over pulleys as small as 1" (25 mm) in diameter, or on belts with mechanical fastener ratings to 200 P.I.W. (35 kN/m).

Patents: www.flexco.com/patents

Conveyor Belt Lacing

For flat conveyor belts from 12" (300 mm) to 60" (1500 mm) wide and for belts 1/32" to 1/2" (.8 to 13 mm) thick, use conveyor belt lacing sized No. 00 to No. 65. Alligator® Conveyor Belt Lacing is available in steel or stainless steel with corrugated hinge pins furnished as standard.

Steel

Steel is suitable for most applications and is plated for rust and corrosion resistance.

300 Series Stainless Steel

300 Series stainless steel is non-rusting and displays extra resistance to abrasion, acids, chemicals, and magnetic attraction. It is excellent in applications with high sanitation requirements.

Corrugated Hinge Pins

The corrugated pin is standard and is suitable for all sizes of Alligator Belt Lacing and for smaller transmission belt lacing applications. Lugs on the hinge pin engage lacing loops, reducing the possibility of hinge pin migration. Available in steel or stainless steel.



Steel Lacing With Steel Corrugated Hinge Pins

| Belt Width | | 00 | 1A | 7 | 15 | 20 | 25 | 27 | 35 | 45 | 55 |
|------------|------|-------|-------|------|-------|-------|-------|-------|-------|-------|-------|
| in. | mm | | | | | | | | | | |
| 12 | 300 | 00-12 | 1A-12 | 7-12 | 15-12 | 20-12 | 25-12 | 27-12 | 35-12 | 45-12 | 55-12 |
| 18 | 450 | 00-18 | 1A-18 | 7-18 | 15-18 | 20-18 | 25-18 | 27-18 | 35-18 | 45-18 | 55-18 |
| 24 | 600 | 00-24 | 1A-24 | 7-24 | 15-24 | 20-24 | 25-24 | 27-24 | 35-24 | 45-24 | 55-24 |
| 30 | 750 | 00-30 | 1A-30 | 7-30 | 15-30 | 20-30 | 25-30 | 27-30 | 35-30 | 45-30 | 55-30 |
| 36 | 900 | 00-36 | 1A-36 | 7-36 | 15-36 | 20-36 | 25-36 | 27-36 | 35-36 | 45-36 | 55-36 |
| 42 | 1050 | 00-42 | 1A-42 | 7-42 | 15-42 | 20-42 | 25-42 | 27-42 | 35-42 | 45-42 | 55-42 |
| 48 | 1200 | 00-48 | 1A-48 | 7-48 | 15-48 | 20-48 | 25-48 | 27-48 | 35-48 | 45-48 | 55-48 |
| 60 | 1500 | 00-60 | 1A-60 | 7-60 | 15-60 | 20-60 | 25-60 | 27-60 | 35-60 | 45-60 | 55-60 |

Carton contains 4 sets of lacing, 4 corrugated hinge pins, and 1 installation gauge pin with clips.

Stainless Lacing With Stainless Corrugated Hinge Pins

| Belt Width | | 00S | 1S | 7S | 15S | 20S | 25S | 27S | 35S | 45S | 55 |
|------------|------|--------|-------|-------|--------|--------|--------|--------|--------|--------|-------|
| in. | mm | | | | | | | | | | |
| 12 | 300 | 00S-12 | 1S-12 | 7S-12 | 15S-12 | 20S-12 | 25S-12 | 27S-12 | 35S-12 | 45S-12 | 55-12 |
| 18 | 450 | 00S-18 | 1S-18 | 7S-18 | 15S-18 | 20S-18 | 25S-18 | 27S-18 | 35S-18 | 45S-18 | 55-18 |
| 24 | 600 | 00S-24 | 1S-24 | 7S-24 | 15S-24 | 20S-24 | 25S-24 | 27S-24 | 35S-24 | 45S-24 | 55-24 |
| 30 | 750 | 00S-30 | 1S-30 | 7S-30 | 15S-30 | 20S-30 | 25S-30 | 27S-30 | 35S-30 | 45S-30 | 55-30 |
| 36 | 900 | 00S-36 | 1S-36 | 7S-36 | 15S-36 | 20S-36 | 25S-36 | 27S-36 | 35S-36 | 45S-36 | 55-36 |
| 42 | 1050 | 00S-42 | 1S-42 | 7S-42 | 15S-42 | 20S-42 | 25S-42 | 27S-42 | 35S-42 | 45S-42 | 55-42 |
| 48 | 1200 | 00S-48 | 1S-48 | 7S-48 | 15S-48 | 20S-48 | 25S-48 | 27S-48 | 35S-48 | 45S-48 | 55-48 |
| 60 | 1500 | 00S-60 | 1S-60 | 7S-60 | 15S-60 | 20S-60 | 25S-60 | 27S-60 | 35S-60 | 45-60 | 55-60 |

Carton contains 4 sets of lacing, 4 corrugated hinge pins, and 1 installation gauge pin with clips.

Transmission Belt Lacing

For flat power-transmission belts up to 12" (300 mm) wide, Alligator® Transmission Belt Lacing is available for sizes 00 through 65. Lacing is scored so it can be easily trimmed to fit narrower belts. Corrugated hinge pins are furnished with the three smallest lacing sizes. A two-piece Rocker Hinge pin is available for sizes 15 to 65.

Steel

Steel is suitable for most applications and is plated for rust and corrosion resistance.

300 Series Stainless Steel

300 Series stainless steel is non-rusting and displays extra resistance to abrasion, acids, chemicals, and magnetic attraction. It is excellent in applications with high sanitation requirements.

Rocker Hinge Pin

The Rocker Hinge pin is furnished with Transmission Belt Lacing. The two-piece pin provides rocking action to reduce friction and wear on loops and lacing. Sizes 15 through 65 are available in steel or stainless steel.



| Lacing Width | | Sets per Box | Steel | 300 Series Stainless |
|--------------|-----|--------------|-------|----------------------|
| in. | mm | | | |
| 6 | 150 | 6 | 00 | 00S |
| 6 | 150 | 6 | 1A | 1AS |
| 6 | 150 | 6 | 7 | 7S-TRANS |
| 12 | 300 | 4 | 15 | 15S |
| 12 | 300 | 4 | 20 | 20S |
| 12 | 300 | 4 | 25D | 25DS |
| 12 | 300 | 8 | 25G | |
| 12 | 300 | 4 | 27K | 27KS |
| 12 | 300 | 8 | 27L | |
| 12 | 300 | 4 | 35N | 35NS |
| 12 | 300 | 4 | 45U | 45US |
| 12 | 300 | 4 | 55W | 55WS |
| 12 | 300 | 4 | 65X | |

Carton contains lacing, hinge pins, and gauge pin.

ALLIGATOR®

Belt Lacing System

Belt Preparation Tools



900 Series Belt Cutter



845LD Belt Cutter



14" Belt Cutter



Rough Top Belt Skiver



Belt Grinder

900 Series Belt Cutter

The 900 Series Belt Cutter incorporates numerous features for easy, smooth cutting of belts with extreme accuracy.

- Durable blade design that produces highly accurate cuts while being fully enclosed for safety
- Quick belt clamp feature
- Cuts belts up to 1-1/2" (38 mm)

| 900 Series Belt Cutter | | |
|------------------------|------|-----------------|
| Belt Width | | Ordering Number |
| in. | mm | |
| 24 | 600 | 900924 |
| 36 | 900 | 900936 |
| 48 | 1200 | 900948 |
| 60 | 1500 | 900960 |
| 72 | 1800 | 900972 |
| 84 | 2130 | 900984 |

845LD Belt Cutter

A sturdy, safe, simple, and portable tool specially designed for cutting wide belts.

- Enclosed blade is handle-driven from either end
- Cuts belts up to 1/2" (12 mm) thick

| 845LD Series Belt Cutter | | |
|--------------------------|------|-----------------|
| Belt Width | | Ordering Number |
| in. | mm | |
| 36 | 900 | 845836LD |
| 48 | 1200 | 845848LD |
| 60 | 1500 | 845860LD |
| 72 | 1800 | 845872LD |

14" Belt Cutter

Portable tool cuts belts up to 14" (350 mm) wide, quickly and easily.

- Table support features a built-in square to ensure proper cut
- Can cut belts in the middle of the roll by opening the cutter end
- Cuts belts up to 3/8" (9.5 mm) thick

| 14" Belt Cutter | | |
|-----------------|-----|-----------------|
| Belt Width | | Ordering Number |
| in. | mm | |
| 14 | 350 | CUTTER-14 |

Rough Top Belt Skiver

Simplifies removal of belt impression covers prior to fastener size selection and installation.

| Rough Top Belt Skiver | |
|-----------------------|--|
| Ordering Number | |
| RTBS | |

Belt Grinder

Carbide cuts belt impression cover instead of burning it for quick and clean skiving. Attaches to a 3/8" (10 mm) electric or pneumatic drill (2,500 rpm).

| Belt Grinder | |
|-----------------|--|
| Ordering Number | |
| RB-1 | |