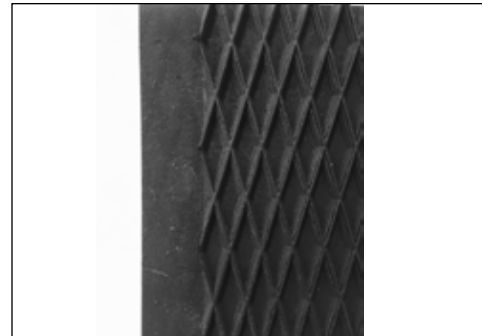
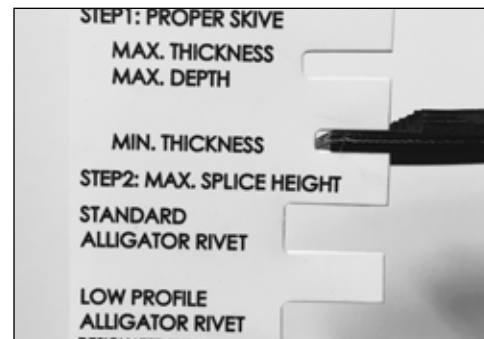


Alligator® Rivet Dimension Gauge



Alligator® Rivet fasteners require proper skived belt thickness, fastener clinch, and rivet curl. The enclosed Alligator Rivet Dimension Gauge is provided to ensure proper installation.

1. Using the Flexco Baler Belt Skiver, Rough Top Skiver, or Alligator® Belt Grinder, remove impression cover of belt.



2. Verify proper skive height has been achieved: Insert skived belt end into top two slots on the gauge. Belt end should fit within the 'Max Thickness' slot, yet be either snug or not fit in the 'Min Thickness' slot.

3. Install fasteners into skived belt end.

Correct: Standard Profile fastener

Correct: Low Profile fastener



4. Measure finished splice height to ensure fastener has been properly installed. Based on the fastener you installed (standard profile or low profile), insert installed splice into the appropriate slot. The gauge should slide over each plate in the fastener strip. If the gauge does not slide easily over, reinsert in tool and install further.



2525 Wisconsin Avenue • Downers Grove, IL 60515-4200 U.S.A.
Tel: 1-630-971-0150 • Fax: 1-630-971-1180 • E-mail: info@flexco.com

Visit www.flexco.com for other Flexco locations and products.

©2008 Flexible Steel Lacing Company. Alligator® is a registered trademark. 04-28-18. For Reorder: X2022

