

Flexco Slider/Impact Bed Spec Sheet

CUSTOMER INFO:

Company Name: _____

Address: _____ Date: _____

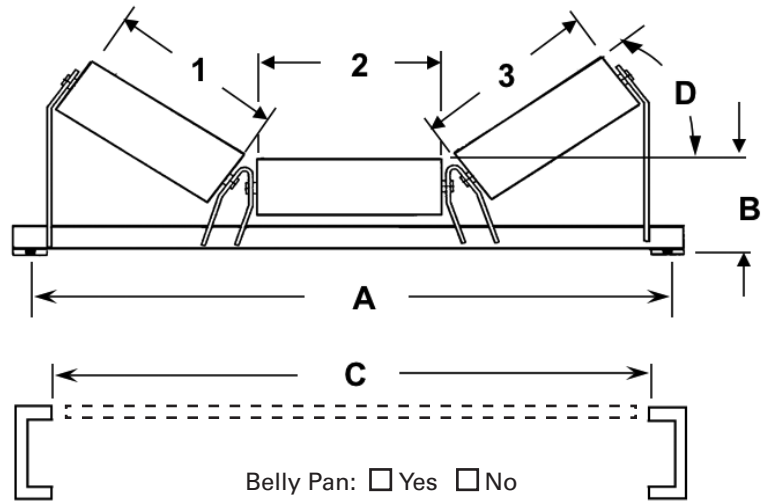
Phone #: _____

Contact Name: _____ Fax #: _____

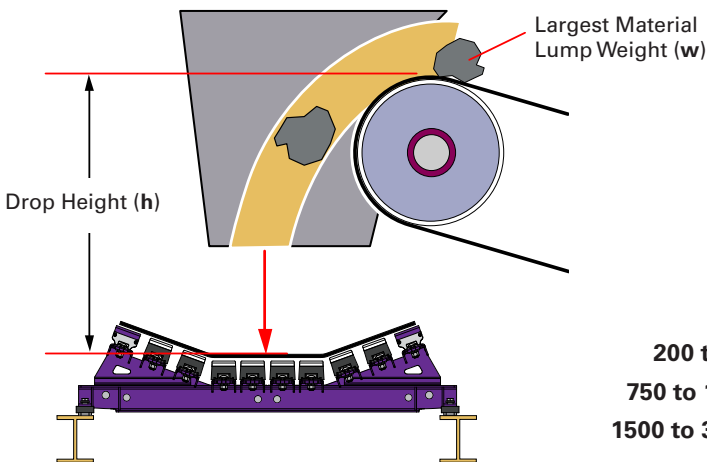
Title/Position: _____ e-Mail: _____

Conveyer Name: _____ PO #: _____ Distributor: _____

_____	A Mounting Bolt Center-to-Center	_____	Idler Length 1
_____	B Center Roll Height Above Mounting Base	_____	Idler Length 2
_____	C Inside Structure Dimension	_____	Idler Length 3
_____	D Trough Angle		
_____	E Belt Width		
_____	F Length of Load Zone		
_____	G Material		
_____	H Drop Height		
_____	I Maximum Lump Size		
_____	J Tons per Hour		
_____	K Belt Speed		
_____	W Maximum Lump Weight		



Impact Energy Calculation Chart



Impact Energy

Lump Weight (w) _____

Drop Height (h) × _____

Total - **lb-ft (kg-m)** _____

See below for bed recommendation/selection

Bed Selection:

- No impact EZSB-C
- Up to 200 lb-ft (25 kg-m) EZSB-I EZIB-L DRX 200
- 200 to 750 lb-ft (25 to 100 kg-m) EZIB-M DRX 750
- 750 to 1500 lb-ft (100 to 200 kg-m) DRX 1500
- 1500 to 3000 lb-ft (200 to 400 kg-m) DRX 3000

