

# PT Max™ Roller Data Sheet

**CUSTOMER INFO:**

Company Name: \_\_\_\_\_

Address: \_\_\_\_\_ Date: \_\_\_\_\_

\_\_\_\_\_ Phone #: \_\_\_\_\_

Contact Name: \_\_\_\_\_ Fax #: \_\_\_\_\_

Title/Position: \_\_\_\_\_ e-Mail: \_\_\_\_\_

Conveyor Name: \_\_\_\_\_ PO #: \_\_\_\_\_

Trainer Location: \_\_\_\_\_ Distributor: \_\_\_\_\_

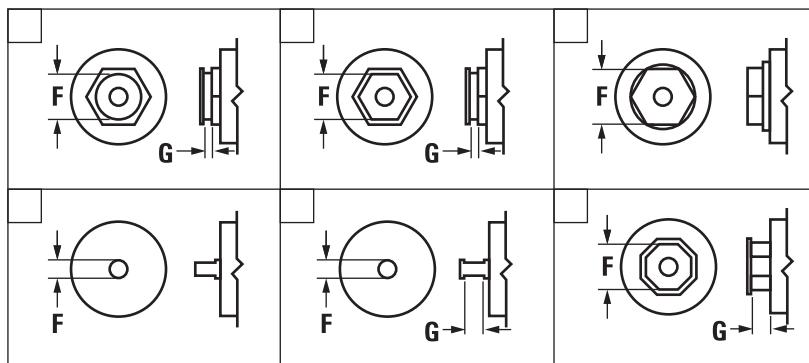
**INSTRUCTIONS:**

1. Fill in conveyor information in section 1 below.
2. Check the relevant idler cap type in allocated boxes below in section 2.
3. Fill in roller dimensions specs in section 3 on the next page.
4. For unique or unusual mounting or surroundings, attach digital images or sketches.  
When conveyor is structural angle/channel/tee, sketch the orientation of the structure for mounting.
5. Email to [PTMaxOrders@flexco.com](mailto:PTMaxOrders@flexco.com)

**1. Conveyor Information**

Conveyor Name		Return Roller Angle	
CEMA Rating (if known)		Material Carried	
Belt Thickness		Number of Rolls in Troughing Set	
Belt Width		Equal/Unequal Trough Rolls (if unequal, do this sheet for each size)	
Troughing Angle		Roller Brand/Part Number	

**2. Idler Cap Type**

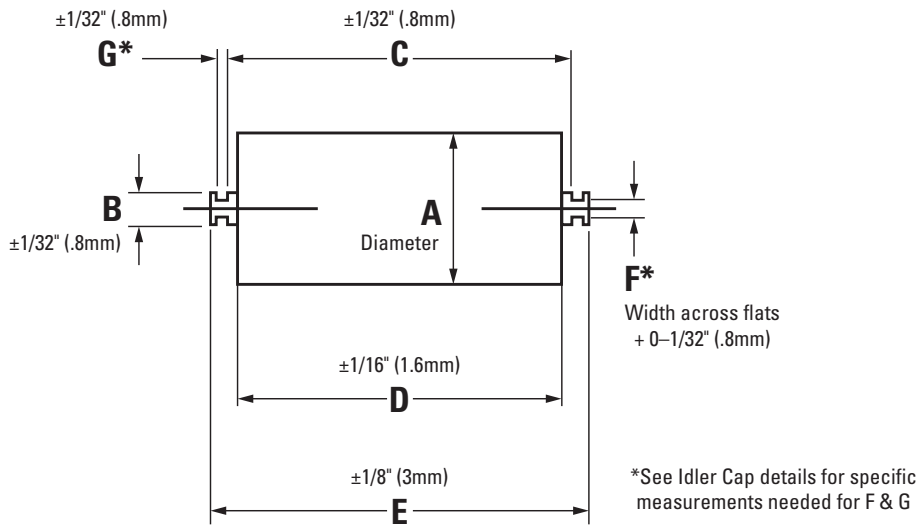


See next page for chart for minimum clearance needed from top of roller to bottom of PT Max.



### 3. Roller Dimensions

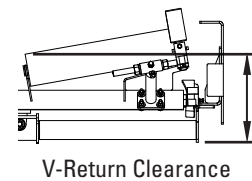
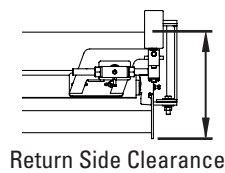
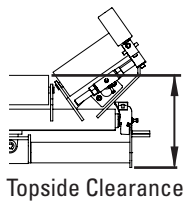
Roller dimensions are easily measured from a spare roller not installed in the conveyor system.



<b>A</b>		<b>E</b>	
<b>B</b>		<b>F</b>	
<b>C</b>		<b>G</b>	
<b>D</b>			

### Top of Roller to Bottom of PT Max Minimum Clearance Needed

ROLL DIAMETER		TOPSIDE						RETURN SIDE						V-RETURN					
		Standard		Heavy-Duty		Super-Duty		Standard		Heavy-Duty		Super-Duty		Standard		Heavy-Duty		Super-Duty	
in.	mm	in.	mm	in.	mm	in.	mm	in.	mm	in.	mm	in.	mm	in.	mm	in.	mm	in.	mm
5	127	16	406	17	432	22.25	570	17	432	18	457	22.75	580	16	406	17	432	22.25	570
6	152	17	432	18	457	23.25	590	18	457	19	483	23.75	600	17	432	18	457	23.25	590
7	178	18	457	19	483	24.25	620	19	483	20	508	24.75	630	18	457	19	483	24.25	620



Questions? Contact Ryan Holowaty at (616) 242-1724 or email rholowaty@flexco.com

Visit [www.flexco.com](http://www.flexco.com) for other Flexco locations and products, or to find an authorized distributor.

©2018 Flexible Steel Lacing Company, 09-10-24, X1075

