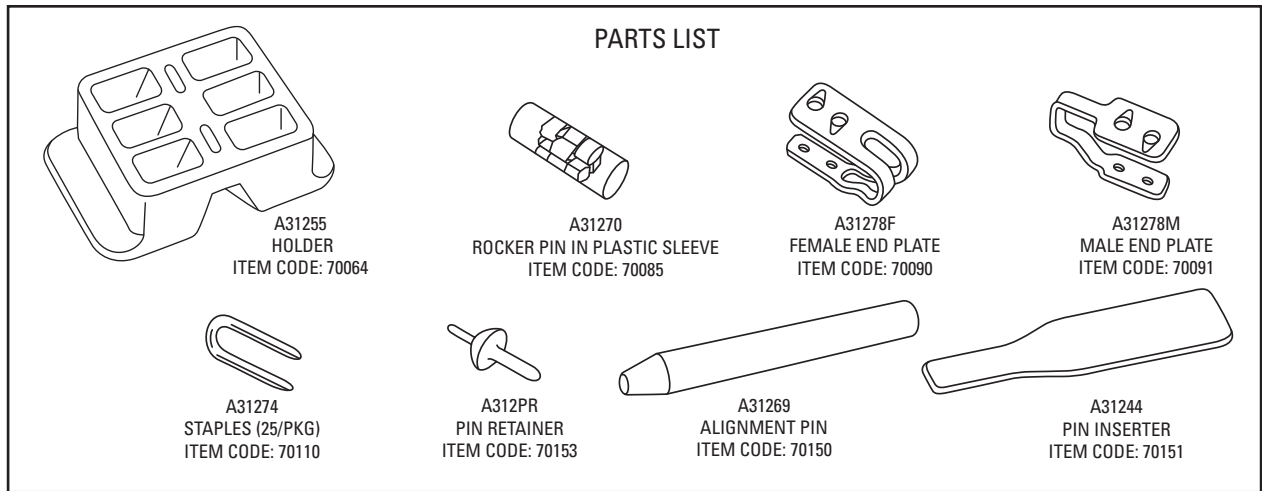


Applying A-312 Alligator® V-Belt Fasteners to "A" Section Fastener-V-Belting

Instructions

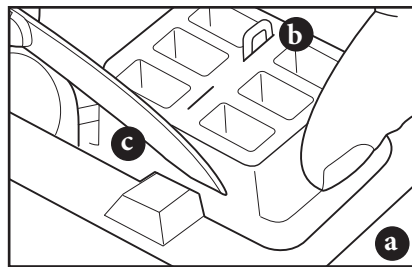


1. Measure length of V-belt required. Determine outside circumference by wrapping a steel tape over the outside diameter of sheaves. Subtract 7/8" for conversion to pitch or laid out flat length.

Example:

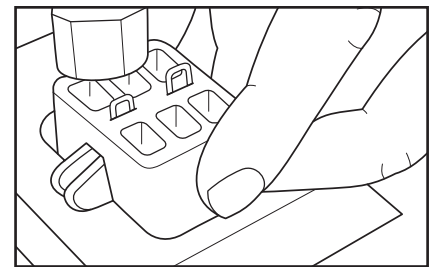
Outside sheave measurement.....72"
 Subtract 7/8" for laid out flat length.....7/8"
 Subtract 3/32" (per foot) for stretch.....9/16"
 Subtract 3/8" fasteners.....3/8"

 Length of V-belt to cut.....70-3/16"

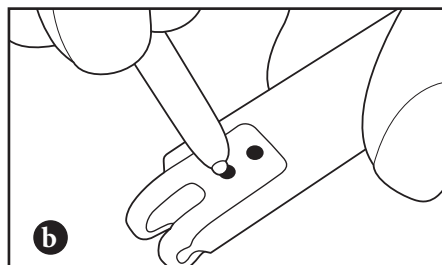
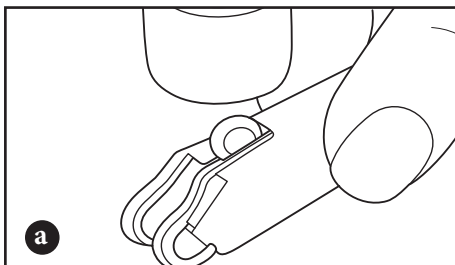


2. Cut belt.

- a. Place holder on belt and align edge of holder with mark on belt.
- b. Tap a staple part way into belt through holes in back slot of holder.
- c. Cut belt flush with holder.



3. Push male or female half of fastener over belt and into recess in holder as far as it will go. Look into staple slot in holder and make sure holes in fastener are visible. Drive staple into belt flush with holder.



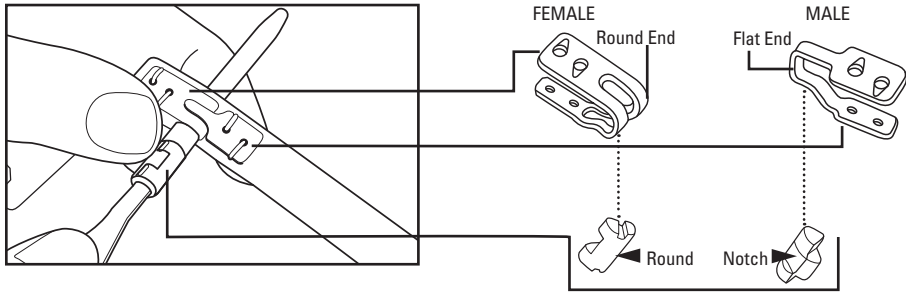
4. Lift holder off belt and remove the back staple.

- a. Place belt on soft wood block and drive remaining staple through belt.
- b. Turn belt over. Bend ends of staple with alignment pin. Use hammer to flatten ends against end plate.

NOTE: Use light hammer blows to avoid crushing fastener.

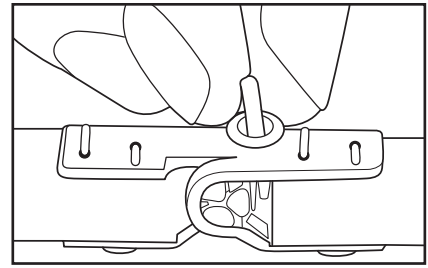
5. Apply opposite half of fastener to other end of belt, repeating steps 3 and 4. Note: Make sure you apply a male end-plate to one end of the belt and a female end-plate to the other.





6. To make belt endless, mesh end-plates.

- a. Insert alignment pin in loops of fastener.
- b. Hold belt and fastener as shown. Then slide plastic pin sleeve over blunt end of alignment pin and push until sleeve hits side of fastener.
- c. Place pin inserter into slot in rocker pin and line up smooth round side of rocker pin with round end of fastener.
- d. Push rocker pins through plastic pin sleeve until alignment pin falls out and notch in rocker pin engages flat male end of faster. Use finger as stop to prevent rocker pin from being pushed in too far.



7. To keep rocker pins in place, push pin retainer through gap in top of fastener as shown.