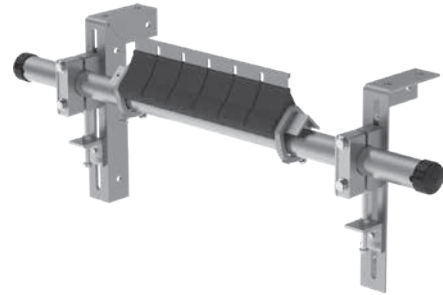


List Price Sheet

Stainless Steel Y-Type Secondary Cleaners

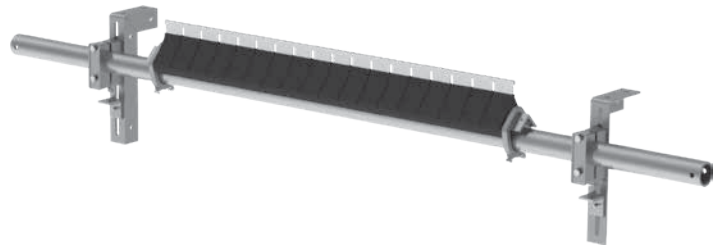
Stainless Steel Y-Type™ SD with Carbide Blades and Bolt Tensioner

BELT WIDTH	ORDERING NUMBER	ITEM CODE
600	YTC600-BT-S/S SECONDARY	67285
750	YTC750-BT-S/S SECONDARY	67286
900	YTC900-BT-S/S SECONDARY	67287
1050	YTC1050-BT-S/S SECONDARY	67288
1200	YTC1200-BT-S/S SECONDARY	67289



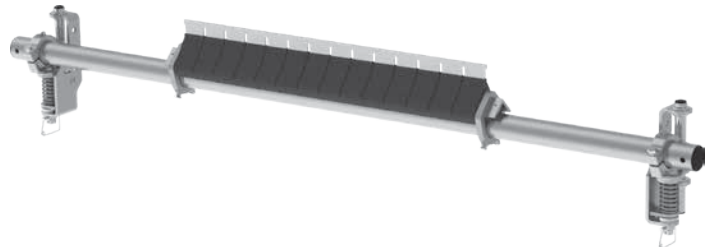
Stainless Steel Y-Type™ HD with Carbide Blades and Bolt Tensioner

BELT WIDTH	ORDERING NUMBER	ITEM CODE
900	YTCHD900-BT-S/S SECONDARY	67290
1050	YTCHD1050-BT-S/S SECONDARY	67291
1200	YTCHD1200-BT-S/S SECONDARY	67292
1350	YTCHD1350-BT-S/S SECONDARY	67293
1500	YTCHD1500-BT-S/S SECONDARY	67294
1800	YTCHD1800-BT-S/S SECONDARY	67295



Stainless Steel Y-Type™ HD with Carbide Blades and MST Tensioner


BELT WIDTH	ORDERING NUMBER	ITEM CODE
900	YTCHD900-MST-S/S SECONDARY	67308
1050	YTCHD1050-MST-S/S SECONDARY	67309
1200	YTCHD1200-MST-S/S SECONDARY	67310
1350	YTCHD1350-MST-S/S SECONDARY	67311
1500	YTCHD1500-MST-S/S SECONDARY	67312
1800	YTCHD1800-MST-S/S SECONDARY	67313




Stainless Steel Y-Type™ HD with Polyurethane Blades and MST Tensioner

BELT WIDTH	ORDERING NUMBER	ITEM CODE
900	YTFHD900-MST-S/S SECONDARY	67314
1050	YTFHD1050-MST-S/S SECONDARY	67315
1200	YTFHD1200-MST-S/S SECONDARY	67316
1350	YTFHD1350-MST-S/S SECONDARY	67317
1500	YTFHD1500-MST-S/S SECONDARY	67318
1800	YTFHD1800-MST-S/S SECONDARY	67319



 Stock items (non-shaded) refer to (*) for specific lead time, if not specified, standard lead time applies.

 Non-stock items (shaded) please contact Flexco for dispatch options and lead times.



List Price Sheet

Stainless Steel Y-Type Secondary Cleaners

Replacement Poles

BELT WIDTH	ORDERING NUMBER	ITEM CODE
mm		
600	YPHD600-S/S POLE	67322
750	YPHD750-S/S POLE	67323
900	YPHD900-S/S POLE	64198
1050	YPHD1050-S/S POLE	64199
1200	YPHD1200-S/S POLE	64200
1350	YPHD1350-S/S POLE	64201
1500	YPHD1500-S/S POLE	64202
1800	YPHD1800-S/S POLE	64204

Other

ORDERING NUMBER	ITEM CODE
MSTHD-S-S/S	90182
MSTHD-B-S/S	90183
MSTHD-G-S/S	90184

Replacment Blades/Cartridges - Standard-Duty Carbide

BELT WIDTH	ORDERING NUMBER	ITEM CODE
mm		
600	YCART-S/S-24/600-SDTC	66749
750	YCART-S/S-30/750-SDTC	67750
900	YCART-S/S-36/900-SDTC	67751
1050	YCART-S/S-42/1050-SDTC	67752
1200	YCART-S/S-48/1200-SDTC	67753

Angle List - SD | Angle List - HD

BELT WIDTH	ITEM CODE	BELT WIDTH	ITEM CODE
600	67324	900	64205
750	67325	1050	64206
900	64205	1200	64207
1050	64206	1350	64208
1200	64207	1500	64209
		1800	64211

Replacment Blades/Cartridges - Heavy-Duty Carbide

BELT WIDTH	ORDERING NUMBER	ITEM CODE
mm		
900	YCART-S/S-36/900-HDTC	67411
1050	YCART-S/S-42/1050-HDTC	67412
1200	YCART-S/S-48/1200-HDTC	67413
1350	YCART-S/S-54/1350-HDTC	67414
1500	YCART-S/S-60/1500-HDTC	67415
1800	YCART-S/S-72/1800-HDTC	67416

Angle Clamp Cost

	ITEM CODE
SD	GR298
HD	B0536

Replacment Blades/Cartridges - Heavy-Duty Purple Polyurethane

BELT WIDTH	ORDERING NUMBER	ITEM CODE
mm		
900	YCART-S/S-36/900-HDP	67417
1050	YCART-S/S-42/1050-HDP	67418
1200	YCART-S/S-48/1200-HDP	67419
1350	YCART-S/S-54/1350-HDP	67420
1500	YCART-S/S-60/1500-HDP	67421
1800	YCART-S/S-72/1800-HDP	67422

Flexco (Aust.) Pty. Ltd • 10 Solent Circuit, Norwest • NSW, Australia, 2153 • Australia
Tel: 612-8818-2000 • Fax: 612-8824-6333 • E-mail: salesau@flexco.com

Visit www.flexco.com for other Flexco locations and products.

©2019 Flexible Steel Lacing Company. 11/14/19. For PDF: W936

