

# Belt Maintenance Tools Designed with Safety in Mind

## ELECTRIC BELT CUTTER Power Assisted Belt Cutting For Rubber Belts Up To 50 mm (2") Thick

Available in both corded and cordless versions, the Electric Belt Cutter from Flexco quickly and easily cuts all types of belting from the softest of natural rubbers to the hardest constructed solid woven PVC and fabric plied belts. Complementing the existing range of Flexco belt cutters, the Electric Belt Cutter is safe and easy to use.

- Available in two sizes. The EBC1 and cordless CEBC1 allow for cuts up to 25 mm (1") thick on rubber belts and up to a maximum 630 kN/m (360 P.I.W.) on PVC belts. The EBC2 and cordless CEBC2 provide for a thicker cut up to 50 mm (2") on rubber belts and up to a maximum 2000 kN/m (1140 P.I.W.) on PVC belts.



## 900 SERIES Belt Cutter Safely and Accurately Cuts Belts Up To 38 mm (1-1/2")

**Advanced features allow the 900 Series Belt Cutter to achieve accurate cuts, every time:**

- Robust blade design is guided at the top to ensure perpendicular cuts
- Single-sided clamp feature allows belt to fall free from cutting edge for reduced operator effort
- Integrated belt grip surface with gentle serrations for added clamping strength
- Cambered bottom beam provides uniform clamping force across the entire belt width

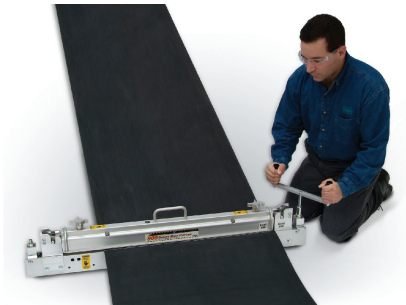
### Safer.

As with all Flexco Safe™ products, the 900 Series Belt Cutter has been designed for operator safety. The blade is totally enclosed during the entire cutting process and is safely stored within the cutter when not in use. The unique “T” top blade design also helps protect users from injury. Users can safely and easily cut thick and/or hard carcass belts up to 38 mm (1-1/2") thick due to advancements in blade technology.

### Easier.

With minimal catch points, the 900 Series Cutter slides easily into position and the upper clamp beam is quickly engaged to speed the cutting process. The cut line can be quickly aligned with clear visibility and the torque required to cut the belt is reduced by over 50% compared to other cutters. When the cut is complete, use the quick release clamps to release the top beam by simply depressing a lever. The 900 Series Cutter is an obvious choice for users who demand accuracy, safety, and speed when preparing belt ends for mechanical belt splicing.

### Smarter.



### 900 SERIES BELT CUTTER

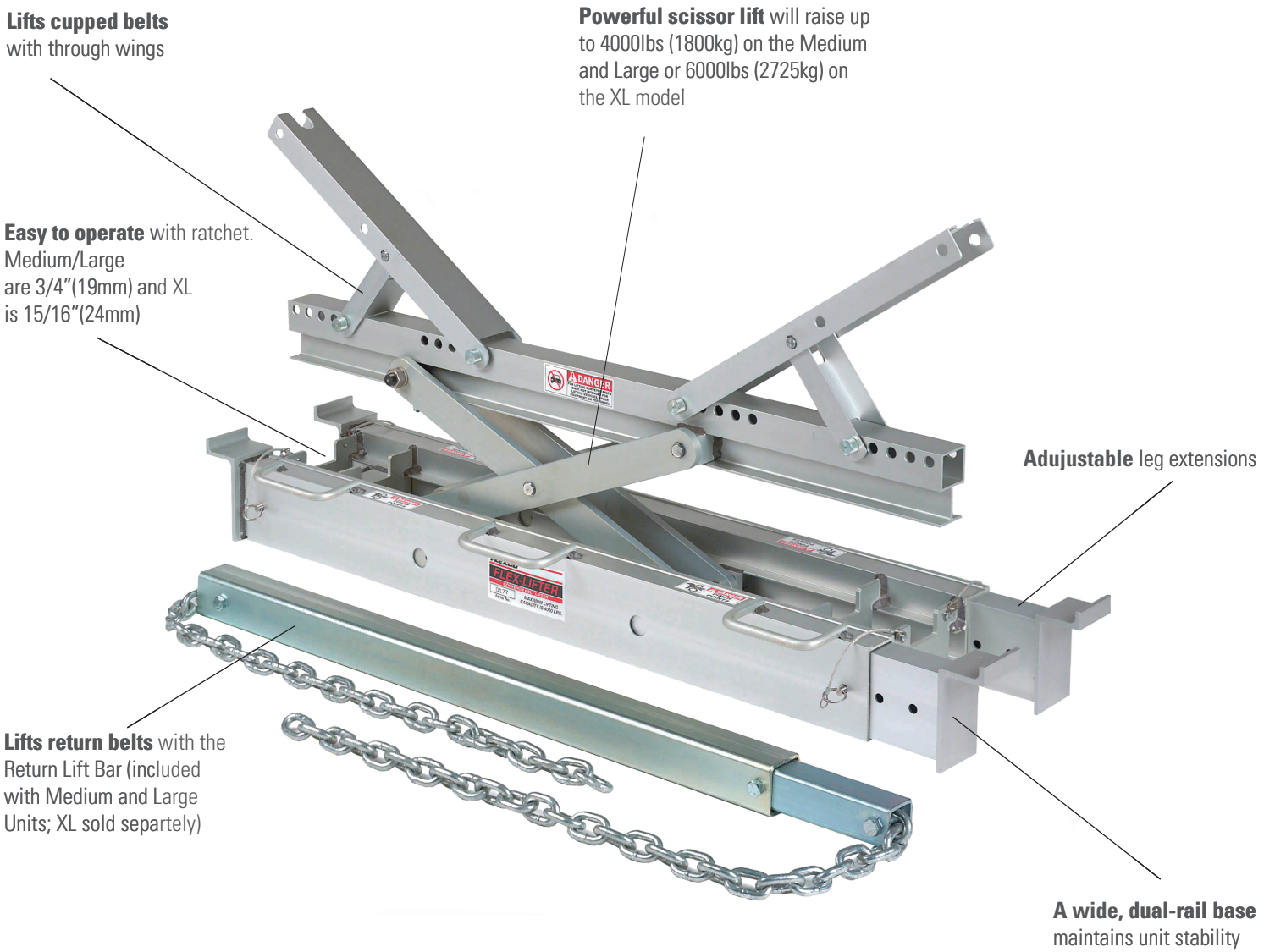
DESCRIPTION	BELT WIDTH		ORDERING NUMBER	ITEM CODE	WT. LBS.
	In	mm			
Cutter Complete for belts up to 1.5" (38mm)	24"	600	900924	04200	39.4
	36"	900	900936	04143	39.4
	48"	1200	900948	04144	48.0
	60"	1500	900960	04145	54.0
	72"	1800	900972	04146	60.3
	84"	2130	900984	04147	86.0
Replacement Blade Kit			900CBK	04149	0.15

# FLEX-LIFTER™

## Conveyor Belt Lifter

### A tough, Versatile Beltline Tool

Lifting a tensioned conveyor belt out of the way to do maintenance work is a difficult job. It can be time-consuming and dangerous. The Flex-Lifter™ makes the job safer the job safer and easier. It takes on the toughest jobs, like lifting a belt even when it is tensioned up to the stated ratings. This tool is versatile, easy to carry, weighs 28 kg only.



Specifications				
Sizes	Belt Width Range	Weight	Closed Height	Vertical Lift
Medium	36" -60" (900-1500 mm)	62 lb. (28.1 kg)	6.75" (169 mm)	14" (350 mm)
Large	48" -72" (1200-1800 mm)	74 lb. (33.6 kg)	6.75" (169 mm)	16" (400 mm)
XL	72" -96" (1800-2400 mm)	125 lb. (56.6 kg)	7.5" (188 mm)	16" (400 mm)
Return Lift Bar (Medium)	36" -60" (900-1500 mm)	21 lb. (10 kg)	n/a	n/a
Return Lift Bar (Large)	48" -72" (1200-1800 mm)	40 lb. (18 kg)	n/a	n/a
V-Return Lift Bar (XL)	72" -96" (1800-2400 mm)	63 lb. (28.6 kg)	n/a	n/a



# FAR-PUL™ HD®

## Belt Clamp

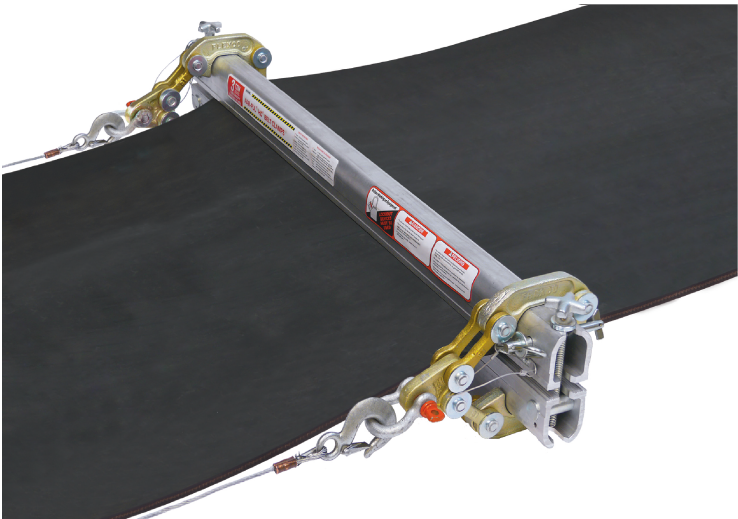
### Safely Lock Belt Securely in Place

Avoid the problems and potential dangers associated with homemade devices such as c-clamps, lumber and chains. Far-Pul™ HD® Belt Clamps are specially designed to properly secure a belt and clamp it for safe belt conveyor maintenance.



### Unique design, easily adjustable

The unique design of the Far-PUL™ HD® Belt Clamp provides even tensioning across the entire belt width for a secure grip. And with a load capacity of up to 2.7 metric tons (3 tons), when used with two 1-1/2-ton chain come-alongs, it is ideal for rubber covered and PVC heavy-duty belting from 6 mm (7/32") to 25 mm (1") thick. The Far-Pul HD also accommodates a variety of belt widths. So the need to inventory different clamp bars for different belt widths is eliminated. Our pre-clamping screw allows you to slide the scissors on to the bars in a quick, efficient, and safe manner. Clamping scissors slide easily into place against both belt edges for easy adjustability. And clamp-bar pins simplify alignment and positioning.



## FAR-PUL™ HD® BELT CLAMPS

Load Capacity up to 3 tons (2.7 metric tons) when used with two 1-1/2ton (1.4 metric ton) come-a-longs.

DESCRIPTION	BELT WIDTH	ORDERING NUMBER	ITEM CODE	WT. LBS.
	mm			
Belt Clamp Complete includes: 4 Belt Clamp Bars and 4 Belt Clamp Scissors	Up to 750	LSHD30	30393	79.0
	Up to 900	LSHD36	30394	87.0
	Up to 1050	LSHD42	30395	91.0
	Up to 1200	LSHD48	30396	98.0
	Up to 1350	LSHD54	30397	103.0
	Up to 1500	LSHD60	30398	110.0
	Up to 1800	LSHD72	30399	121.0
30" Belt Clamp Bar Set*	Up to 750	LSHDB30-2	30418	20.0
36" Belt Clamp Bar Set*	Up to 900	LSHDB36-2	30414	23.0
42" Belt Clamp Bar Set*	Up to 1050	LSHDB42-2	30421	26.0
48" Belt Clamp Bar Set*	Up to 1200	LSHDB48-2	30423	30.0
54" Belt Clamp Bar Set*	Up to 1350	LSHDB54-2	30424	33.0
60" Belt Clamp Bar Set*	Up to 1500	LSHDB60-2	30430	36.0
72" Belt Clamp Bar Set*	Up to 1800	LSHDB72-2	30408	40.0
Steel Belt Clamp Scissor - Each		LSHDS	30392	10.5
Belt Locator Pin - includes Washer and Locking Nut		LSHDLP	30400	0.15
Retaining Pin Kit		LSHD-RPK	30390	2.0
Clamp Bar Screw		LSHDCBS	30373	1.0

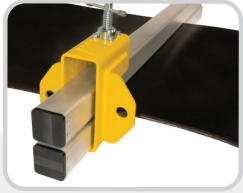
\*Includes 2 Bars Per Set

# TUG™ HD®

## Belt Clamp

# Ultimate Grip and Superior Strength Combine to Secure the Belt

Flexco understands that worker safety is a top priority when repairing belts carrying larger loads. Flexco TUG™ HD® Belt Clamps are designed to secure the belt for belt repair meeting the most stringent safety test standards. Available in 6 and 8 ton versions, TUG HD Belt Clamps provide even tensioning across the entire belt width for ultimate strength. Modular components allow for increased versatility and portability.



*Clamps over the belt for greater strength*



*Acme thread offers superior grip strength and allow operators the chance to slowly release the belt after maintenance*



*Extruded non-slip grip pattern on aluminum bars provides ultimate holding power*



*Easy to carry heat-treated aluminum clamp bars*



*Clamp Ends feature increased capacity for easier clamp bar insertion*

### Features and Benefits:

- **Safety first.** Third-party tested. Safety factors of clamp ratings meet or exceed industry standards.
- **Easy belt maintenance.** A single pair can be used to block off belt for maintenance.
- **Belt versatility.** Can be used on multiple conveyor belting types including flat, sidewall, chevron, and other specialty profiles.
- **Engineered for tough conditions.** Designed with high-grade aluminum bars and structural steel clamp ends. Shock absorbing end caps are designed to protect the bars from hammer use and drops.
- **Ideal for larger loads.** 6 and 8 ton load capacity ratings and belt widths up to 2400 mm (96").

### Available versions

**6 Ton**

**8 Ton**

Easy on-site identification clamp labels are color-coded blue for 6 Ton and black for 8 Ton.

# FSK™ Belt Skiver

## Quickly and Easily Remove Belt Top Cover to Recess Mechanical Fasteners

Whenever possible, Flexco recommends skiving the belt in order to countersink mechanical fasteners. Skiving reduces the fastener profile on the belt, resulting in improved fastener/cleaner compatibility and increased fastener service life.



### ***Safe, On-Site Operation***

Portable, lightweight, and easy to carry, the FSK™ Belt Skiver adjusts easily to the precise cutting depth you need. The blade is safely enclosed during skiving operations. The FSK is compact, so it is easy to use anywhere on the job site—even in cramped operating environments.

Used on rubber-covered belts with top covers of 4.5 mm (3/16") or more, the FSK Skiver provides skives from 1.5 to 9.5 mm (1/16" to 3/8") deep in a single pass. Deeper skives can be achieved with multiple passes. The FSK can also be used on most worn or damaged belt surfaces.