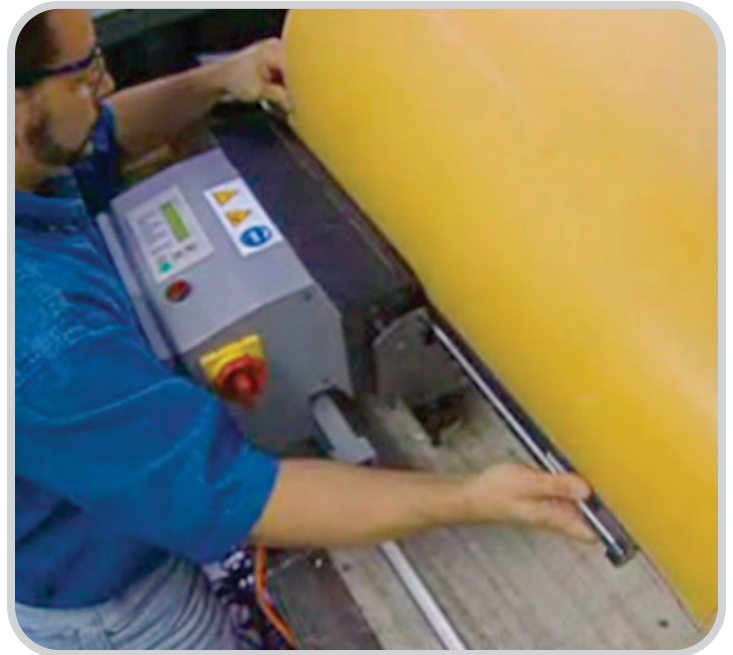
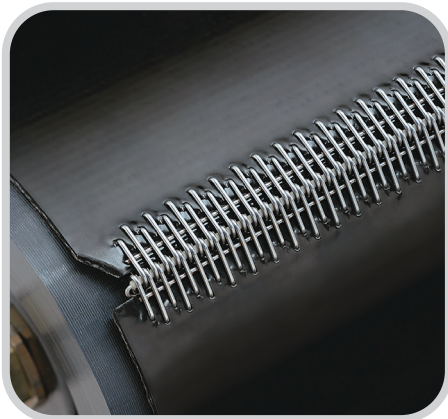




CLIPPER® Production Lacers

Increase Efficiency and Precision with High Volume Production Lacing

Production Lacers are designed for high-volume production lacing. It's the quickest, most precise method of installing wire hooks. As the lacer jaws contact the hooks, the hook points penetrate the belt at the ideal angle, resulting in an optimal splice. Hook retainers/combs are available for all sizes of hooks, making production lacers capable of lacing any size Clipper® hook. All production lacers offer the continuous lacing feature which, with multiple operations, allows the user to lace belts wider than the width of the lacer.



The Pro Series

Pro Series production lacers feature our patented jaw action – the comb, hooks, and belt are simultaneously pulled down as the jaws compress the hooks into the belt, forming an optimal hook profile.

Electric Hydraulic Lacer

No better choice for users who insist on speedy application. Available in 300, 625, and 950 mm (12", 25", and 38") models.

- Laces entire lacer width with one simple press of the foot pedal
- Continuous lacing feature
- Ideal for high volume lacing

#12 Speed Lacer

The most economical production lacing tool. It is a durable, shop-use lacer for hooks of all sizes.

- Manually operated
- Laces 300 mm (12") at a time
- Continuous lacing feature
- Optional chain drive attachment is available to prevent closing lever from interfering with wide belts

The Pro Series

AMU 6000

Users of the hydraulic AMU 6000 install the ultimate splice. The jaws can be heated to ease hook penetration and to allow the belt cover to slightly flow, resulting in a splice with an extremely low profile.

Laces 14" (350 mm) at a time, with combs available in lengths up to 60" (1500 mm). Longer combs allow the user to first load the fasteners into the comb, then lace up to 14" (350 mm) at a time, sliding the comb to the next section to be laced.

Lacer pressure can be adjusted up to 7350 PSI (500 bar), jaw closure hold time up to 10 seconds, and heated jaws up to 390° F (200° C).

Electronic controls permit users to program heat, pressure, and jaw closure times for repeatability in lacing procedures.

AMU 4000

Includes all AMU 6000 features except the heated jaws.



Shown: AMU 6000

CLIPPER® Production Lacers

AMU 4000 AND 6000 Lacers

Ordering Number	
115 V, 60HZ, Single Phase	
AMU4000-115V1PH-60HZ	
AMU6000-115V1PH-60HZ	
400 V, 50/60HZ, Three Phase	
AMU6000-400V3PH-50/60HZ	

Combs sold separately

Combs for AMU 4000 and 6000 Lacers					
Belt Width		Ordering Number			
mm	in.	Hook Size 25	Hook Size 36, UCM36, 30	Hook Size 1, UX1	Hook Size 2-7, U2-U7
600	24"	P6CLPR25M-24	P6CLPR36M-24	P6CLPR1M-24	P6CLPR2M-24
900	36"	P6CLPR25M-36	P6CLPR36M-36	P6CLPR1M-36	P6CLPR2M-36
1200	48"	P6CLPR25M-48	P6CLPR36M-48	P6CLPR1M-48	P6CLPR2M-48
1500	60"	P6CLPR25M-60	P6CLPR36M-60	P6CLPR1M-60	P6CLPR2M-60

Includes Lacer Pins

Electric Hydraulic Lacer

Belt Width		Ordering Number
mm	in.	
300	12"	EH-12
625	25"	EH-25
950	38"	EH-38

Includes #2-7 Retainer

NOTE: Please specify 115 or 230 volt wiring requirements when ordering. Can be ordered for international requirements.



Hook Retainer for Hydraulic Lacers					
Belt Width		Ordering Number			
mm	in.	Hook Size 25	Hook Size 36, UCM36, 30	Hook Size 1, UX1	Hook Size 2-7, U2-U7
300	12"	HR25-12	HR36-12	HR1-12	HR2-12
625	25"	HR25-25	HR36-25	HR1-25	HR2-25
950	38"	HR25-38	HR36-38	HR1-38	HR2-38

Includes one Lacer Pin

#12 Speed Lacer

Belt Width		Ordering Number
mm	in.	
300	12"	12LACER
		Chain Drive Attachment
		12LACER-CHAIN

Includes #2-7 Retainer

Hook Retainer for #12 Speed Lacer	
Hook Size	Ordering Number
25	HR25-12
30, 36, UCM36	HR36-12
1, UX1	HR1-12
2-7, U2-U7	HR2-12

Includes one Lacer Pin



Visit www.flexco.com for other Flexco locations and products, or to find an authorised distributor.