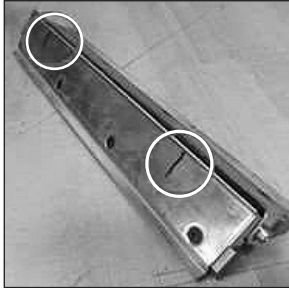


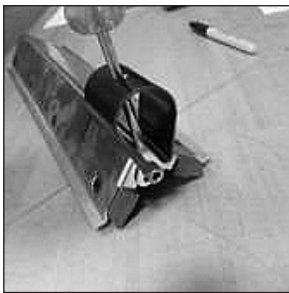
# Replacing Spring Clip Adapters P1188 on the Pro 200 and Pro 400 Alligator Adapters Installation Instructions



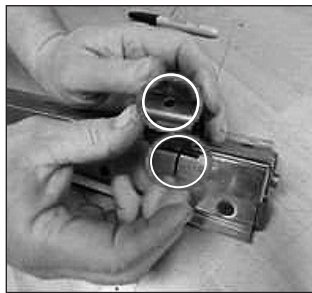
1. Remove screws and clips from the adapter and mark the threaded holes.



2. Insert a small straight edge screwdriver and rotate to open spring as shown.



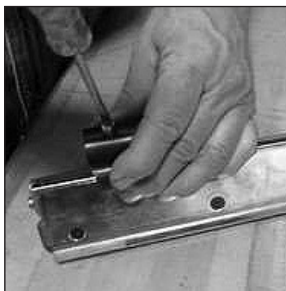
3. Slide the replacement spring onto the adapter as shown. Remove the screwdriver once it touches the adapter.



4. Line up the hole in the spring with the line on the adapter. Repeat the process on the other side.



5. Clamp the jaws in a vice just enough to start the screws.



6. Finish tightening the screws until the bottom of the head just touches the top of the springs.