



Product Handbook

EFFECTIVE MARCH 1, 2025

AUPH1

Flex-Lag[®] Pulley Lagging



10 Solent Circuit, Norwest NSW 2153, Australia

Customer Service

+61 2 8818 2000

Fax

+61 2 8824 6333

www.flexco.com

Table of Contents

Flex-Lag®

Flex-Lag® Rubber Lagging.....	3
Flex-Lag® Medium Ceramic Lagging.....	4-5
Flex-Lag® Full Ceramic Lagging.....	6-7
Flex-Lag® Selection Chart – Ceramic.....	8
Flex-Lag® Weld-on Rubber Lagging.....	9
Flex-Lag® Weld-on Full Ceramic Lagging.....	10
Flex-Lag® Crowned Pulley Lagging.....	11
Cements and Repair Materials.....	12-13

Information

HEAD OFFICE ADDRESS:	Flexco (Aust.) Pty Ltd 10 Solent Circuit Norwest, NSW 2153
OFFICE TELEPHONE:	+61 2 8818 2000
WESTERN AUSTRALIA OFFICE ADDRESS	8 Potts Road Forrestdale, WA 6112 Phone: 1300 098 435
POSTAL ADDRESS:	P.O. Box 6365 Norwest, NSW 2153
EMAIL:	salesau@flexco.com
OFFICE FACSIMILE:	+61 2 8824 6333

Flex-Lag® Rubber Lagging

Flex-Lag® Light Duty is supplied in rolls 200 mm wide and 3.3 metres long. Alternative lengths and thicknesses are available upon request.

Flex-Lag® Light Duty Rubber

PATTERN	THICKNESS	LENGTH	MATERIAL	ORDERING NUMBER	ITEM CODE	WT. KG
	mm	m				
Light Duty	7.5	3.3	SBR	7.5NLD3.3/1	71077	5.5

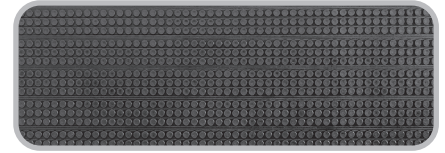
SBR and FRAS Rubber have a hardness of 65–75 durometer.

FRAS Rubber has been approved for use in underground coal mines.

For 25 mm and 30 mm thicknesses or special lengths, contact Flexco Customer Service Department for price and delivery details.

Tolerances - Standard thicknesses plus 0.25 mm minus 0.75 mm
- Width – plus or minus 0.5 mm

Light Duty Lagging

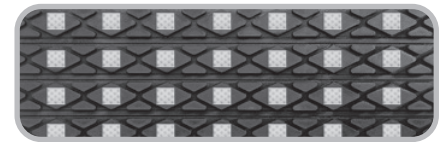


Flex-Lag® Roll Lagging – SBR Rubber

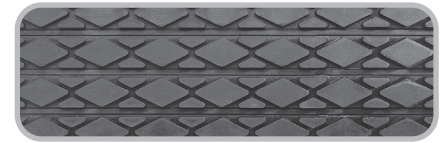
PATTERN	THICKNESS	LENGTH	ORDERING NUMBER	ITEM CODE	WT. KG
	mm	m			
Diamond	10	6.5	10ND6.5/21	71002	12.0
Diamond	10	78*	10ND-78MTR ROLL	66158	144.0
Diamond	12	6.5	12ND6.5/21	71004	15.0
Diamond	12	65*	12ND-65MTR ROLL	66153	150.0
Diamond	15	6.5	15ND6.5/21	71006	19.5
Diamond	20	6.5	20ND6.5/21	71008	24.0
Diamond	25	6.5	25ND6.5/21	71152	31.5
Plain	10	6.5	10NP6.5/21	71010	14.0
Plain	12	6.5	12NP6.5/21	71012	17.0
Plain	15	6.5	15NP6.5/21	71017	22.0
Plain	20	6.5	20NP6.5/21	71021	26.0
Plain	25	6.5	25NP6.5/21	71163	32.5
Diamond Ceramic	12	6.5	12NDC6.5/21	71155	15.0
Diamond Ceramic	12	65*	12NDC-65MTR ROLL	66155	150.0

* Lead time for non-stocked items: 5 working days; 65 m rolls - 15 working days

Diamond Ceramic Lagging



Diamond Grooved Lagging



Plain Grooved Lagging





Flex-Lag® Roll Lagging – FRAS SBR Rubber

PATTERN	THICKNESS	LENGTH	ORDERING NUMBER	ITEM CODE	WT.
	mm	m			
Diamond	10	6.5	10FRD6.5/21	71014	14.0
Diamond	10	78*	10FRD-78MTR ROLL	66159	168.0
Diamond	12	6.5	12FRD6.5/21	71016	17.5
Diamond	12	65*	12FRD-65MTR ROLL	66154	175.0
Diamond	15	6.5	15FRD6.5/21	71018	25.0
Diamond	20	6.5	20FRD6.5/21	71019	27.0
Plain	10	6.5	10FRP6.5/21	71020	16.0
Plain	12	6.5	12FRP6.5/21	71022	20.0
Plain	15	6.5	15FRP6.5/21	71015	25.0
Plain	20	6.5	20FRP6.5/21	72129	33.0
Diamond Ceramic	12	6.5	12FRDC6.5/21	71159	16.0
Diamond Ceramic - Smooth	12	65*	12FRDC-65MTR	107803	185.0
Diamond Ceramic	12	65*	12FRDC-65MTR ROLL	66246	160.0

FRAS (Fire Resistant Anti Static). FRAS Lagging complies with the requirements of MDG3608.

* Lead time for non-stocked items: 5 working days; 65 m rolls - 15 working days

-  Stock Items (non-shaded) carried in factory inventory.
-  Made to Order Items (shaded). Please contact Flexco for dispatch options and lead times.

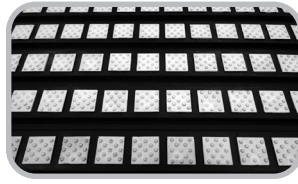
Flex-Lag® Medium Ceramic Lagging

No wasted ceramic with easy-to-specify dimensions by using pulley or belt width.

Constructed from individual ceramic tiles moulded into high-durometer rubber for superior abrasion resistance.

Horizontal grooves trap and deflect water.

Moulded ceramic buttons grip the belt's underside for positive traction and no slippage.



Specifications:

Temperature Rating -15° to 85°C	Ceramic Compound Aluminum Oxide (Al ₂ O ₃)
Rubber Compound SBR (Styrene-Butadiene-Rubber)	Ceramic Hardness 83 HRA Rockwell Hardness Scale A
Rubber Hardness 68 ± 3 Shore A	

Flex-Lag® Medium Ceramic Lagging – SBR 12 mm Rubber

THICKNESS	BELT WIDTH	CERAMIC LENGTH	STRIP LENGTH	DIMPLED TILE			SMOOTH TILE		
				ORDERING NUMBER	ITEM CODE	WT. KG	ORDERING NUMBER	ITEM CODE	WT. KG
*12	450	474	880	CLMN450/18-12MM	102063	2.40	CLMN450/18-12 SMOOTH	102066	2.40
	600	626	1032	CLMN600/24-12MM	102064	2.80	CLMN600/24-12 SMOOTH	102067	2.80
	750	779	1185	CLMN750/30-12MM	64285	3.20	CLMN750/30-12 SMOOTH	102068	3.20
	900	931	1337	CLMN900/36-12MM	66016	3.60	CLMN900/36-12 SMOOTH	69328	3.60
	1050	1082	1488	CLMN1050/42-12MM	68150	4.00	CLMN1050-12 SMOOTH	102069	4.00
	1200	1235	1641	CLMN1200/48-12MM	69326	4.80	CLMN1200/48-12 SMOOTH	66253	4.80
	1350	1388	1794	CLMN1350/54-12MM	68805	5.60	CLMN1350/54-12 SMOOTH	102070	5.60
	1500	1541	1947	CLMN1500/60-12MM	69321	6.00	CLMN1500/60-12 SMOOTH	102071	6.00
	1800	1842	2248	CLMN1800/72-12MM	69318	6.80	CLMN1800/72-12 SMOOTH	102072	6.80
	2100	2155	2561	CLMN2100/84-12MM	102065	7.20	CLMN2100/84-12 SMOOTH	102073	7.20

* Lead time for non-stocked items: 10 working days

Flex-Lag® Medium Ceramic Lagging – FRAS SBR 12 mm Rubber

THICKNESS	BELT WIDTH	CERAMIC LENGTH	STRIP LENGTH	DIMPLED TILE			SMOOTH TILE		
				ORDERING NUMBER	ITEM CODE	WT. KG	ORDERING NUMBER	ITEM CODE	WT. KG
*12	450	474	880	CLMFR450/18-12	102074	2.80	CLMFR450/18-12s	102079	2.80
	600	626	1032	CLMFR600/24-12	102075	3.20	CLMFR600/24-12s	102080	3.20
	750	779	1185	CLMFR750/30-12	102076	3.60	CLMFR750/30-12s	102081	3.60
	900	931	1337	CLMFR900/36-12	69491	4.00	CLMFR900/36-12s	102082	4.00
	1050	1082	1488	CLMFR1050/42-12	102077	4.80	CLMFR1050/42-12s	102083	4.80
	1200	1235	1641	CLMFR1200/48-12	65017	5.60	CLMFR1200/48-12s	102084	5.60
	1350	1388	1794	CLMFR1350/54-12	64994	6.40	CLMFR1350/54-12s	102085	6.40
	1500	1541	1947	CLMFR1500/60-12	65526	6.80	CLMFR1500/60-12s	102086	6.80
	1800	1842	2248	CLMFR1800/72-12	64663	7.60	CLMFR1800/72-12s	102087	7.60
	2100	2155	2561	CLMFR2100/84-12	102078	8.40	CLMFR2100/84-12s	102088	8.40

FRAS (Fire Resistant Anti Static). FRAS Lagging complies with the requirements of MDG3608.

* Lead time for non-stocked items: 10 working days

Stock Items (non-shaded) carried in factory inventory.
 Made to Order Items (shaded). Please contact Flexco for dispatch options and lead times.

Flex-Lag® Medium Ceramic Lagging

Flex-Lag® Medium Ceramic Lagging – SBR 15 mm Rubber

THICKNESS	BELT WIDTH	CERAMIC LENGTH	STRIP LENGTH	DIMPLED TILE			SMOOTH TILE		
				ORDERING NUMBER	ITEM CODE	WT. KG	ORDERING NUMBER	ITEM CODE	WT. KG
*15	450	474	880	CLMN450/18-15	61294	3.0	CLMN450/18-15S	62052	3.0
	600	626	1032	CLMN600/24-15	61295	3.5	CLMN600/24-15S	62053	3.5
	750	779	1185	CLMN750/30-15	61296	4.0	CLMN750/30-15S	62054	4.0
	900	931	1337	CLMN900/36-15	61297	4.5	CLMN900/36-15S	62055	4.5
	1050	1082	1488	CLMN1050/42-15	61298	5.0	CLMN1050/42-15S	62056	5.0
	1200	1235	1641	CLMN1200/48-15	61299	6.0	CLMN1200/48-15S	62057	6.0
	1350	1388	1794	CLMN1350/54-15	61300	7.0	CLMN1350/54-15S	62058	7.0
	1500	1541	1947	CLMN1500/60-15	61301	7.5	CLMN1500/60-15S	62059	7.5
	1800	1842	2248	CLMN1800/72-15	61302	8.5	CLMN1800/72-15S	62060	8.5
	2100	2155	2561	CLMN2100/84-15	61303	9.0	CLMN2100/84-15S	62061	9.0

* Lead time for non-stocked items: 10 working days

Flex-Lag® Medium Ceramic Lagging – FRAS SBR 15 mm Rubber

THICKNESS	BELT WIDTH	CERAMIC LENGTH	STRIP LENGTH	DIMPLED TILE			SMOOTH TILE		
				ORDERING NUMBER	ITEM CODE	WT. KG	ORDERING NUMBER	ITEM CODE	WT. KG
*15	450	474	880	CLMFR450/18-15	61308	3.5	CLMFR450/18-15S	62063	3.5
	600	626	1032	CLMFR600/24-15	61309	4.0	CLMFR600/24-15S	62064	4.0
	750	779	1185	CLMFR750/30-15	61310	4.5	CLMFR750/30-15S	62065	4.5
	900	931	1337	CLMFR900/36-15	61311	5.0	CLMFR900/36-15S	62066	5.0
	1050	1082	1488	CLMFR1050/42-15	61312	6.0	CLMFR1050/42-15S	62067	6.0
	1200	1235	1641	CLMFR1200/48-15	61313	7.0	CLMFR1200/48-15S	62068	7.0
	1350	1388	1794	CLMFR1350/54-15	61314	8.0	CLMFR1350/54-15S	62069	8.0
	1500	1541	1947	CLMFR1500/60-15	61315	8.5	CLMFR1500/60-15S	62070	8.5
	1800	1842	2248	CLMFR1800/72-15	61316	9.5	CLMFR1800/72-15S	62071	9.5
	2100	2155	2561	CLMFR2100/84-15	61317	10.5	CLMFR2100/84-15S	62072	10.5

FRAS (Fire Resistant Anti Static). FRAS Lagging complies with the requirements of MDG3608.

* Lead time for non-stocked items: 10 working days

Flex-Lag® Medium Ceramic Lagging, 15 mm – 40 metre rolls

DESCRIPTION	THICKNESS	LENGTH	ORDERING NUMBER	ITEM CODE
	mm	m		
SBR Rubber	15	40	CLMN-40MTR MEDIUM FLEX-LAG	63765
FRAS	15	40	CLMFR-40MTR MEDIUM FRAS FLEX-LAG	63788

* Lead time for non-stocked items: 15 working days

Stock Items (non-shaded) carried in factory inventory.
 Made to Order Items (shaded). Please contact Flexco for dispatch options and lead times.

Flex-Lag® Full Ceramic Lagging

Flex-Lag® Ceramic Pulley Lagging consists of dimple ceramic tiles moulded into SBR rubber and is 12 mm thick.

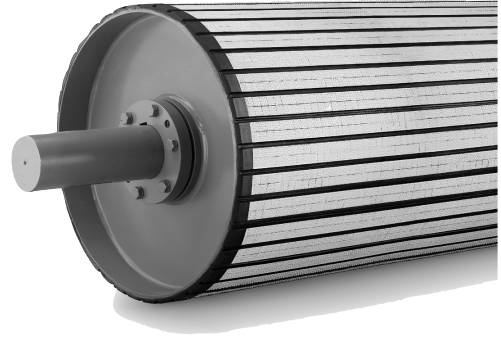
FRAS Ceramic Lagging has been approved for use in underground coal mines.

Flex-Lag Ceramic is also available in 15 mm, 20 mm, and 30 mm (maximum) thicknesses. For pricing and delivery times, please contact Flexco.

Smooth ceramic available on demand. No extra cost.

Thickness tolerance 0.25 mm plus and 0.75 mm minus.

Width – plus or minus 0.5 mm



Flex-Lag® Full Ceramic Lagging - SBR Rubber

THICKNESS	BELT WIDTH	CERAMIC LENGTH	STRIP LENGTH	DIMPLED TILE			SMOOTH TILE		
				ORDERING NUMBER	ITEM CODE	WT. KG	ORDERING NUMBER	ITEM CODE	WT. KG
12	450	460	860	CLN460/18.4-12	71111	3.5	CLN460/18.4-12S	79383	3.5
12	600	600	1000	CLN600/24-12	71112	4.0	CLN600/24-12S	79384	4.0
12	750	760	1160	CLN760/30.4-12	71113	4.3	CLN760/30.4-12S	79385	4.3
12	800	800	1200	CLN800/32-12	71114	4.5	CLN800/32-12S	79386	4.5
12	900	900	1300	CLN900/36-12	71115	5.0	CLN900/36-12S	79387	5.0
12	1050	1060	1500	CLN1060/42.4-12	71116	5.5	CLN1060/42.4-12S	79388	5.5
12	1200	1200	1600	CLN1200/48-12	71039	6.0	CLN1200/48-12S	79389	6.0
12	1350	1360	1800	CLN1360/54.4-12	71126	7.0	CLN1360/54.4-12S	79390	7.0
12	1400	1400	1800	CLN1400/56-12	71040	7.2	CLN1400/56-12S	79391	7.2
12	1500	1520	2000	CLN1520/60.8-12	71127	7.5	CLN1520/60.8-12S	79392	7.5
12	1600	1600	2000	CLN1600/64-12	71117	8.0	CLN1600/64-12S	79393	8.0
12	1700	1700	2100	CLN1700/68-12	71041	8.3	CLN1700/68-12S	79394	8.3
12	1800	1800	2300	CLN1800/72-12	71042	8.5	CLN1800/72-12S	79395	8.5
12	1900	1900	2400	CLN1900/76-12	71043	9.0	CLN1900/76-12S	79396	9.0
12	2000	2000	2500	CLN2000/80-12	71037	9.2	CLN2000/80-12S	79397	9.2
12	2100	2100	2600	CLN2100/84-12	71044	9.5	CLN2100/84-12S	79398	9.5
12	2200	2200	2700	CLN2200/88-12	71045	10.0	CLN2200/88-12S	79399	10.0
12	2300	2300	2800	CLN2300/92-12	71046	10.5	CLN2300/92-12S	79400	10.5
12	2400	2400	2900	CLN2400/96-12	71047	11.0	CLN2400/96-12S	79401	11.0
12	2500	2500	3000	CLN2500/100-12	71048	11.2	CLN2500/100-12S	79402	11.2
12	2600	2600	3000	CLN2600/104-12	71049	11.5	CLN2600/104-12S	79403	11.5
12	2800	2800	3300	CLN2800/112-12	71050	12.0	CLN2800/112-12S	79404	12.0
12	3000	3000	3300	CLN3000/120-12	71000	13.0	CLN3000/120-12S	79405	13.0

* Lead time for non-stocked items: 10 working days

Stock Items (non-shaded) carried in factory inventory.
 Made to Order Items (shaded). Please contact Flexco for dispatch options and lead times.

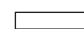

Flex-Lag® Full Ceramic Lagging

Flex-Lag® Full Ceramic Lagging – FRAS SBR Rubber

THICKNESS	BELT WIDTH	CERAMIC LENGTH	STRIP LENGTH	DIMPLED TILE			SMOOTH TILE		
				ORDERING NUMBER	ITEM CODE	WT. KG	ORDERING NUMBER	ITEM CODE	WT. KG
12	450	460	860	CLFR460/18.4-12	71118	3.5	CLFR460/18.4-12S	79406	3.5
12	600	600	1000	CLFR600/24-12	71119	4.0	CLFR600/24-12S	79407	4.0
12	750	760	1160	CLFR760/30.4-12	71120	4.3	CLFR760/30.4-12S	79408	4.3
12	800	800	1200	CLFR800/32-12	71121	4.5	CLFR800/32-12S	79409	4.5
12	900	900	1300	CLFR900/36-12	71122	5.0	CLFR900/36-12S	79410	5.0
12	1050	1060	1500	CLFR1060/42.4-12	71123	5.5	CLFR1060/42.4-12S	79411	5.5
12	1200	1200	1600	CLFR1200/48-12	71005	6.0	CLFR1200/48-12S	79412	6.0
12	1350	1360	1800	CLFR1360/54.4-12	A1636	7.0	CLFR1360/54.4-12S	79413	7.0
12	1400	1400	1800	CLFR1400/56-12	71007	7.2	CLFR1400/56-12S	79414	7.2
12	1500	1520	2000	CLFR1520/60.8-12	71009	7.5	CLFR1520/60.8-12S	79415	7.5
12	1600	1600	2000	CLFR1600/64-12	71124	8.0	CLFR1600/64-12S	79416	8.0
12	1700	1700	2100	CLFR1700/68-12	71078	8.3	CLFR1700/68-12S	79417	8.3
12	1800	1800	2300	CLFR1800/72-12	71079	8.5	CLFR1800/72-12S	79418	8.5
12	1900	1900	2400	CLFR1900/76-12	71080	9.0	CLFR1900/76-12S	79419	9.0
12	2000	2000	2500	CLFR2000/80-12	71081	9.2	CLFR2000/80-12S	79420	9.2
12	2100	2100	2600	CLFR2100/84-12	71082	9.5	CLFR2100/84-12S	79421	9.5
12	2200	2200	2700	CLFR2200/88-12	71083	10.0	CLFR2200/88-12S	79422	10.0
12	2300	2300	2800	CLFR2300/92-12	71084	10.5	CLFR2300/92-12S	79423	10.5
12	2400	2400	2900	CLFR2400/96-12	71085	11.0	CLFR2400/96-12S	79424	11.0
12	2500	2500	3000	CLFR2500/100-12	71086	11.2	CLFR2500/100-12S	79425	11.2
12	2600	2600	3000	CLFR2600/104-12	71087	11.5	CLFR2600/104-12S	79426	11.5
12	2800	2800	3300	CLFR2800/112-12	71088	12.0	CLFR2800/112-12S	79427	12.0
12	3000	3000	3300	CLFR3000/120-12	71089	13.0	CLFR3000/120-12S	79428	13.0

FRAS (Fire Resistant Anti Static). FRAS Lagging complies with the requirements of MDG3608.

* Lead time for non-stocked items: 10 working days

 Stock Items (non-shaded) carried in factory inventory.
 Made to Order Items (shaded). Please contact Flexco for dispatch options and lead times.

Flex-Lag® Lagging

Flex-Lag® Pulley Lagging is manufactured in strips 200 mm wide. It is this width in relation to the pulley circumference that determines the quantity of strips required to lag a pulley. A chart has been set out below for ease of calculation, relating to the pulley diameter.

FLEX-LAG® INSTALLATION INSTRUCTIONS

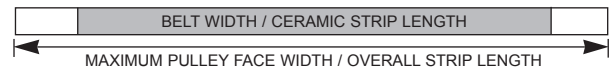
1. Measure pulley diameter and select the number of strips from the selection chart.
2. Cut strips approximately 50–100 mm wider than pulley face.
3. Sandblast pulley surface to obtain a clean surface. If necessary, clean pulley with solvent to remove any grease or oils.
4. Paint pulley surface with one coat of Conti Plus metal primer. Lagging can be fixed to the pulley anytime in the next 7 days. (Allow drying for 30 minutes at room temperature before applying cement.)
5. Apply one coat of Conti Secur BFA to the lagging and the pulley surface. (Remember to add the Activator RE to the tin of cement.) Depending on ambient temperatures, allow drying for 30 minutes at room temperature.
6. Scribe a straight line across the pulley face using a square to the edge of the pulley.
7. Apply second coat of cement to rubber and pulley surface. If the pulley is large, you may want to do this in stages, as you travel around the circumference.
8. Let each surface dry until tacky (use back of the finger test)
9. When tacky, apply the first strip along the scribed line and then carefully press down the full width of the strip. Hammer each strip down with a 'dead-blow' hammer, ensuring there are no air bubbles. A stitching roller can be handy for pressing down the cutting sypes.
10. Apply each subsequent strip in the same manner until there are three strips remaining.
11. Using a few small off-cuts of Flex Lag, work out how the three remaining strips must be cut to ensure they all fit.
12. Apply the remaining strips in the manner set out above. Always fix the widest of the three remaining strips last, as it is the most flexible and easy to use in the gap remaining.
13. Hammer down all strips again and be sure there are no gaps between any of the joints.
14. Trim excess lagging around the circumference of the pulley at a 45° angle.

STRIP SELECTION CHART

PULLEY DIAMETER	STRIPS	PULLEY DIAMETER	STRIPS
50 (min)–67mm	1*	637–700 mm	11
68–129 mm	2*	701–764 mm	12
130–196 mm	3*	765–827 mm	13
197–259 mm	4*	828–891 mm	14
260–319 mm	5*	892–955 mm	15
320–381 mm	6	956–1018 mm	16
382–445 mm	7	1019–1082 mm	17
446–510 mm	8	1083–1145 mm	18
511–573 mm	9	1146–1210 mm	19
574–636 mm	10	1211–1300 mm	20

*Light Duty Lagging only. Rubber Lagging and Ceramic Lagging would be difficult to apply to pulleys with these diameters and is not recommended unless necessary.

CERAMIC STRIP CONFIGURATION



Stock Items (non-shaded) carried in factory inventory.
 Made to Order Items (shaded). Please contact Flexco for dispatch options and lead times.

Flex-Lag® Weld-On Rubber Lagging



STRIP SELECTION CHART

PULLEY DIAMETER	STRIPS REQUIRED
400	8
450	9
600	12
750	15
900	18
1050	21
1200	24
1350	27
1500	30
1800	36

Flex-Lag® Weld-on Diamond Lagging – SBR Rubber 400–725 mm Pulley Diameter

BELT WIDTH	STRIP LENGTH	ORDERING NUMBER	ITEM CODE	WT. KG
mm	mm			
450	500	WND18-16	72169	1.4
600	650	WND24-16	72171	1.8
750	800	WND30-16	72173	2.2
900	950	WND36-16	72175	2.6
1050	1100	WND42-16	72177	3.0
1200	1275	WND48-16	72179	3.5
1350	1425	WND54-16	72181	4.0
1500	1575	WND60-16	72183	4.4
1800	1875	WND72-16	72185	5.1

Flex-Lag® Weld-on Diamond Lagging – SBR Rubber 750 mm+ Pulley Diameter

BELT WIDTH	STRIP LENGTH	ORDERING NUMBER	ITEM CODE	WT. KG
mm	mm			
450	500	WND18-30	72170	1.4
600	650	WND24-30	72172	1.8
750	800	WND30-30	72174	2.2
900	950	WND36-30	72176	2.6
1050	1100	WND42-30	72178	3.0
1200	1275	WND48-30	72180	3.5
1350	1425	WND54-30	72182	4.0
1500	1575	WND60-30	72184	4.4
1800	1875	WND72-30	72186	5.1

Flex-Lag® Weld-on Diamond Lagging – FRAS SBR Rubber 400 – 725 mm Pulley Diameter

BELT WIDTH	STRIP LENGTH	ORDERING NUMBER	ITEM CODE	WT. KG
mm	mm			
450	500	WFRD18-16	72187	1.6
600	650	WFRD24-16	72189	2.0
750	800	WFRD30-16	72191	2.5
900	950	WFRD36-16	72193	3.0
1050	1100	WFRD42-16	72195	3.5
1200	1275	WFRD48-16	72197	4.0
1350	1425	WFRD54-16	72199	4.5
1500	1575	WFRD60-16	72201	5.0
1800	1875	WFRD72-16	72201	5.6

FRAS (Fire Resistant Anti Static). FRAS Lagging complies with the requirements of MDG3608.

* Lead time for non-stocked items: 10 working days

Flex-Lag® Weld-on Diamond Lagging – FRAS SBR Rubber 750 mm+ Pulley Diameter

BELT WIDTH	STRIP LENGTH	ORDERING NUMBER	ITEM CODE	WT. KG
mm	mm			
450	500	WFRD18-30	72188	1.6
600	650	WFRD24-30	72190	2.0
750	800	WFRD30-30	72192	2.5
900	950	WFRD36-30	72194	3.0
1050	1100	WFRD42-30	72196	3.5
1200	1275	WFRD48-30	72198	4.0
1350	1425	WFRD54-30	72200	4.5
1500	1575	WFRD60-30	72202	5.0
1800	1875	WFRD72-30	72204	5.6

FRAS (Fire Resistant Anti Static). FRAS Lagging complies with the requirements of MDG3608.

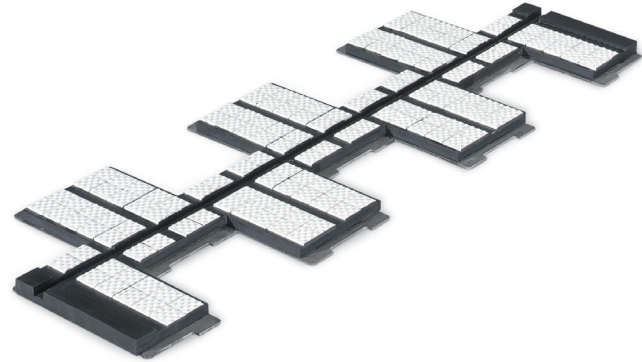
Stock Items (non-shaded) carried in factory inventory.
 Made to Order Items (shaded). Please contact Flexco for dispatch options and lead times.

Flex-Lag® Weld-On Full Ceramic Lagging

WNC weld-on ceramic lagging is supplied either flat or radiused.
 Recommend rolling of metal back prior to installation.
WNC weld on ceramic is available in FRAS rubber at a surcharge of 5%.

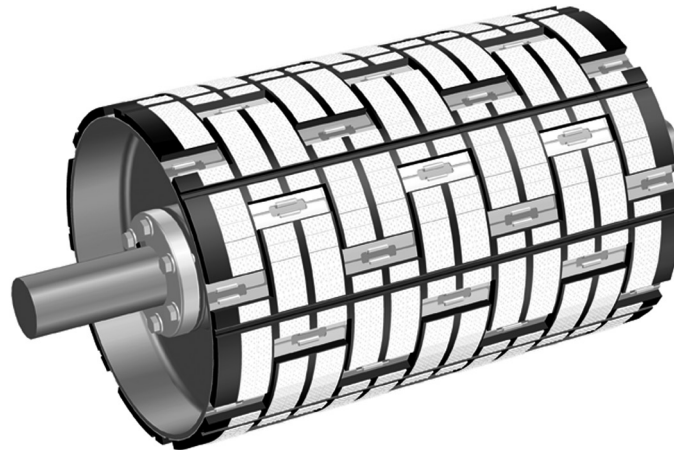
Flat Metal Backed Lagging

STRIP WIDTH	ORDERING NUMBER	ITEM CODE	WT. KG
mm			
460	WNC18/450-Flat strip	P2897	1.7
600	WNC24/600-Flat strip	P2898	2.3
750	WNC30/750-Flat strip	P2899	2.9
900	WNC36/900-Flat strip	P2900	3.4
1050	WNC42/1050-Flat strip	P2901	4.5
1200	WNC48/1200-Flat strip	P2902	4.8
1350	WNC54/1350-Flat strip	P2903	5.5
1500	WNC60/1500-Flat strip	P2904	6.0
1800	WNC72/1800-Flat strip	P2905	7.0



STRIP SELECTION CHART

PULLEY DIAMETER	STRIPS REQUIRED
400	8
450	9
600	12
750	15
900	18
1050	21
1200	24
1350	27
1500	30
1800	36



Radius Metal Backed Lagging – 400–725 mm Pulley Diameter

BELT WIDTH	STRIP LENGTH	ORDERING NUMBER	ITEM CODE	WT. KG
mm	mm			
450	500	WCLN18-16	71131	1.7
600	650	WCLN24-16	71132	2.3
750	800	WCLN30-16	71133	2.9
900	950	WCLN36-16	71135	3.4
1050	1100	WCLN42-16	71137	4.5
1200	1275	WCLN48-16	71139	4.8
1350	1425	WCLN54-16	71149	5.5
1500	1575	WCLN60-16	71165	6.0
1800	1875	WCLN72-16	71151	7.0

* Lead time for non-stocked items: 10 working days

Radius Metal Backed Lagging – 725 mm+ Pulley Diameter

BELT WIDTH	STRIP LENGTH	ORDERING NUMBER	ITEM CODE	WT. KG
mm	mm			
600	650	WCLN24-30	71150	2.3
750	800	WCLN30-30	71134	2.9
900	950	WCLN36-30	71136	3.4
1050	1100	WCLN42-30	71138	4.5
1200	1275	WCLN48-30	71144	4.8
1350	1425	WCLN54-30	71145	5.5
1500	1575	WCLN60-30	71146	6.0
1800	1875	WCLN72-30	71147	7.0

* Lead time for non-stocked items: 10 working days

Stock Items (non-shaded) carried in factory inventory.
 Made to Order Items (shaded). Please contact Flexco for dispatch options and lead times.

Flex-Lag® Adhesives

Flex-Lag® Adhesive

SIZE & TYPE	CARTON QUANTITY	ITEM CODE	WT. KG
0.8 litre	12	75017	0.8
4.8 litre	1	75019	4.9
200 litre	1	64250	192.0
COVERAGE – 2.5 SQUARE METRES PER LITRE			

NOTE: 1 x 0.8L tin of Flex-Lag® Adhesive (75017) requires 1 x 40ml Flex-Lag® Activator (70186).

1 x 4.8L tin of Flex-Lag® Adhesive (75019) requires 6 x 40ml Flex-Lag® Activator (70186).

Flex-Lag® Activator – 40 ml Bottles

SIZE & TYPE	CARTON QUANTITY	ITEM CODE	WT. KG
Activator RE (40 ml)	12	70186	0.1

Flex-Lag® Primer

SIZE & TYPE	CARTON QUANTITY	ITEM CODE	WT. KG
0.8 Litre	6	70189	0.9
COVERAGE – 12 SQUARE METRES PER LITRE			



- Stock Items (non-shaded) carried in factory inventory.
- Made to Order Items (shaded). Please contact Flexco for dispatch options and lead times.

Conrema® Filler Rubber

THICKNESS	ITEM CODE	WT. KG
mm		
1.5	70191	6.9
3	70192	11.1

Tacky on both sides & supplied in rolls 500 mm wide & 5 metres long.

Conrema® Repair Bands

WIDTH	ITEM CODE	WT. KG
mm		
50	70193	1.4
70	70194	2.0
100	70195	3.2
150	70196	4.8
220	70197	6.8
300	73952	9.6

2 mm thick and 10 metres long.

Conrema® Repair Bands – Fabric Reinforced



WIDTH	ITEM CODE	WT. KG
mm		
150	74994	6.0
220	A1796	9.0
300	75002	12.0

4 mm thick and 10 metres long.

Conrema® Repair – Fabric-EP160

MODEL/SIZE	ITEM CODE	WT. KG
600 mm x 10 m x 1.6 mm (12M ²)	75020	15.5

2 mm thick - 600 mm x 10 metres.

 Stock Items (non-shaded) carried in factory inventory.
 Made to Order Items (shaded). Please contact Flexco for dispatch options and lead times.

This page intentionally left blank.

This page intentionally left blank.

This page intentionally left blank.



Partners in Productivity

10 Solent Circuit • Norwest NSW 2153

Phone: +61 2 8818 2000 Fax: +61 2 8824 6333

E-mail: salesau@flexco.com

www.flexco.com