

# Product Handbook

## **MLT Super-Screw™** **Fix'N Go, PS15 Skivers,** **and FEIN Oscillating Tools**

January 2024



2525 Wisconsin Avenue, Downers Grove, Illinois 60515

Phone: 1-630-971-0150 Fax: 1-630-971-1180

Customer Experience: 1-800-541-8028

**[www.flexco.com](http://www.flexco.com)**

Patents: [www.flexco.com/patents](http://www.flexco.com/patents)

## INFORMATION

<b>OFFICE AND FACTORY ADDRESSES:</b>	Flexco 2525 Wisconsin Avenue Downers Grove, IL 60515-4200 U.S.A.	Flexco 1854 Northridge Dr. NW Walker, MI 49544 U.S.A.
<b>REMITTANCE ADDRESS:</b>	Flexco 135 South LaSalle - Dept. 4803 Chicago, IL 60674-4803 U.S.A.	
<b>TOLL-FREE SERVICE:</b>	Customer Experience:	1-800-541-8028
<b>MAIN OFFICE TELEPHONE FOR USE OUTSIDE THE CONTINENTAL USA:</b>	(630) 971-0150	<b>FAX:</b> (630) 971-1180
<b>UPC MANUFACTURERS CODE:</b>	697598	

## TERMS AND CONDITIONS

<b>PAYMENT TERMS:</b>	In U.S. Dollars. Net 30 Days.
<b>F.O.B. POINT:</b>	Our plant: Downers Grove, Illinois or Walker, Michigan.
<b>SHIPPING CHARGES:</b>	Shipping charges will be <b>prepaid</b> in the continental U.S.A. and Canada for any of our products on a single shipment from Downers Grove, IL or Walker, MI having a net invoice value of U.S. \$2,500 Non-BCP/\$5,000 BCP/\$5,000 MLT. Shipping will be based on the least expensive truck rate or common parcel service - not to exceed 10% of the net invoice value. Any shipping charges in excess of 10% will be added to the invoice total. Shipping charges will be made on the same basis to Seattle, Washington covering shipments to Alaska and to West Coast Ports on shipments to Hawaii. No additional charges such as single shipment, warehouse or brokerage fees, surcharge or demurrage will be included. Shipping charges will be prepaid on back orders provided the initial order was shipping prepaid eligible.
<b>DROP SHIPMENTS:</b>	Flexco cannot support export shipments unauthorized by Flexco.
<b>MINIMUM ORDER:</b>	\$50. Any order placed must have a net invoice value of \$50 or more, with the exception of UPS Next Day Air orders, which are not subject to any minimum value. Second Day Air orders are subject to the \$50 minimum order requirement.
<b>RETURN GOODS:</b>	<b>All Return Goods are subject to a minimum 20% restocking charge.</b> Return goods must be return shipped to the original shipping location. Failure to follow RMA shipping instructions will result in additional charges. Returned product will not be accepted without a <b>Return Material Authorization (RMA)</b> . Returned product must be of current design, in full box quantities, in resalable condition, and purchased from Flexco within the last 3 years. Please refer to the date code located on each label to determine if the goods are less than 3 years old.
<b>SPECIAL ORDER PRODUCT:</b>	Special Order Products <i>are not returnable</i> . Special order products include made-to-order products, cut-to-order MLT splices, non-stock products, any gray-shade items, or items not listed in the price book.
<b>DISCLAIMER:</b>	Although the information in this Price Book is presented in good faith and believed to be correct at the time of printing, Flexco makes no representation or warranties as to the completeness or accuracy of the information. Flexco has no liability for any errors or omissions in the materials. Flexco reserves the right to change, delete, or otherwise modify the information which is represented without any prior notice.

## ASK FOR INFORMATION ON E-SERVICES ORDERING CAPABILITIES AND OTHER BENEFITS

Call 1-800-541-8028 Mon-Fri from 6am - 7pm CST or email us at [info@flexco.com](mailto:info@flexco.com)

Visit our Web site at: [www.flexco.com](http://www.flexco.com)

# Super-Screw® Evolution and Original

## SUPER-SCREW® FASTENERS CUT-TO-LENGTH SPLICES AND FULL ROLLS

### Cut-to-Order Splice Guidelines- Max Assembled Length with Spacers and Screws:

- Evolution: 492" Max
- Original up to 105 Series: 300" Max
- Original 180-250 Series: 200" Max

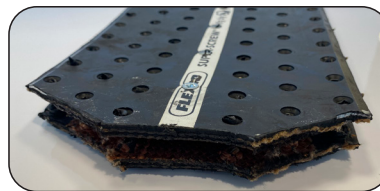
DESCRIPTION	BELT STRENGTH (PIW)	SUPER-SCREW SERIES	RUBBER COMPOUND	ITEM CODE	FULL ROLL SIZE (INCHES)	
35 AR Evolution	200	35	AR Abrasion Resistant	Configurable items: 4 inputs needed: (Series)- (Rubber Compound)- (Belt Thickness After Skive)- (Splice Length)  See Selection Guide on Page 5	984	
35 MOR Evolution	200	35	MOR Moderately Oil Resistant		984	
35 AR/SB Evolution	200	35	AR/SB Abrasion Resistant Sliding Bed		984	
63 AR Evolution	360	63	AR Abrasion Resistant		984	
63 MOR Evolution	360	63	MOR Moderately Oil Resistant		984	
63 MSHA Evolution	360	63	MSHA Mine Safety & Health Admin Rated		984	
63 HOT Evolution	360	63	HOT 400° F		984	
63 SS Evolution	360	63	SS Stainless Steel		984	
63 AR/SB Evolution	360	63	AR/SB Abrasion Resistant Sliding Bed		984	
63 MOR/SB Evolution	360	63	MOR/SB Moderately Oil Resistant Sliding Bed		984	
63 2M White Food Grade Evolution	360	63	White FDA Stainless Steel (2M/79" Only)		79	
65 AR Evolution	360	65	AR Abrasion Resistant		984	
65 MOR Evolution	360	65	MOR Moderately Oil Resistant		984	
<b>Note:</b> 80 Series is currently transitioning from Original to Evolution. Only Original is available until stock is depleted. Contact Customer Service for availability.						
80 MSHA Original	450	80	MSHA Mine Safety & Health Admin Rated		984	
80 MOR Original	450	80	MOR Moderately Oil Resistant		984	
80 SS Original	450	80	SS Stainless Steel		984	
80 MOR/SB Original	450	80	MOR/SB Moderately Oil Resistant Sliding Bed		984	
80-AR Evolution	450	80	AR Abrasion Resistant		984	
80-MSHA Evolution	450	80	MSHA Mine Safety & Health Admin Rated		984	
80-MOR Evolution	450	80	MOR Moderately Oil Resistant		984	
80-HOT Evolution	450	80	HOT 400°F		984	
80-SS Evolution	450	80	SS Stainless Steel		984	
80-MOR/SB Evolution	450	80	MOR/SB Moderately Oil Resistant Sliding Bed		984	
80-MSHA-SS Evolution	450	80	MSHA Mine Safety Health Admin Rated-Stainless Steel		984	
80-MOR-SS Evolution	450	80	MOR Moderately Oil Resistant-Stainless Steel		984	
85 AR Original	450	85	AR Abrasion Resistant		984	
85 MSHA Original	450	85	MSHA Mine Safety & Health Admin Rated		984	
100 AR Original	650	100	AR Abrasion Resistant		984	
100 MSHA Original	650	100	MSHA Mine Safety & Health Admin Rated		984	
100 SS Original	650	100	SS Stainless Steel	984		
105 AR Original	650	105	AR Abrasion Resistant	984		
105 SS Original	650	105	SS Stainless Steel	N/A		
180 AR Original	1030	180	AR Abrasion Resistant	590		
180 MSHA Original	1030	180	MSHA Mine Safety & Health Admin Rated	590		
180 SS Original	1030	180	SS Stainless Steel	590		
200 AR Original	1200	200	AR Abrasion Resistant	590		
200 MSHA Original	1200	200	MSHA Mine Safety & Health Admin Rated	590		
250 AR Original	1430	250	AR Abrasion Resistant	590		
250 MSHA Original	1430	250	MSHA Mine Safety Health Admin Rated	590		

Screws are included in the price of each cut-to-length splice and full rolls. Each cut-to-length splice includes two or more PZ bits, rolls include 20 PZ bits.

\*Full rolls are sold at a 10% discount off the per-inch price.



Super-Screw® Evolution



Super-Screw® Original

## DRIVE BITS

### PZ2 AND PZ3 BITS

DESCRIPTION	ORDERING NUMBER	ITEM CODE
PZ2 Bit for 35-105 Series Super-Screw	PZ2B	110274
PZ3 Bit for 180-200 Series Super-Screw	PZ3B	110275



Customer Experience: 1.800.541.8028



# Super-Screw® Additional Screws

Additional screws are available upon request. Contact Customer Service for information and ordering.

## SCREW VARIETY KITS (Galvanized Only)

DESCRIPTION	SCREW TYPE	ORDERING NUMBER	ITEM CODE	Each kit contains a toolbox, 10 PZ bits and 1000 galvanized screws in the following quantities:
Evolution Screw Variety Kit	5mm Diameter with Washers	SVK-EVO	110231	200- 5X12, 200- 5X14, 400- 5X16, 200- 5X18
Original Screw Variety Kit, 5mm	5mm Diameter without Washers	SVK-5MM-ORIG	110232	200- 5X16, 200- 5X18, 400- 5X20, 200- 5X22
Original Screw Variety Kit, 6mm	6mm Diameter without Washers	SVK-6MM-ORIG	110233	200- 6X22.5, 400- 6X25, 200- 6X27, 200- 6X30



## SUPER-SCREW® EVOLUTION SCREWS WITH WASHERS - PACK OF 100

DESCRIPTION	SCREW SIZE	ITEM CODE
Galvanized Screw with Washer, 5mm diameter	5x10	109844
	5x12	109848
	5x14	109852
	5x16	109856
	5x18	109860
Stainless* Screw with Washer, 5mm diameter	5x20	109864
	5x10	109846
	5x12	109850
	5x14	109854
	5x16	109858
Stainless* Screw with Washer, 5mm diameter	5x18	109862
	5x20	109866

\*316 Stainless Steel



Super-Screw® Evolution Screws



Super-Screw® Original Screws

## SUPER-SCREW® ORIGINAL (UP TO 105 SERIES) SCREWS WITHOUT WASHERS - PACK OF 100

DESCRIPTION	SCREW SIZE	ITEM CODE
Galvanized Screw without Washer, 5mm diameter	5x10	109843
	5x12	109847
	5x14	109851
	5x16	109855
	5x18	109859
	5x20	109863
	5x22	109867
	5x24	109869
Stainless* Screw without Washer, 5mm diameter	5x30	109870
	5x10	109845
	5x12	109849
	5x14	109853
	5x16	109857
	5x18	109861
	5x20	109865
	5x22	109868

\*316 Stainless Steel

## SUPER-SCREW® ORIGINAL (180-250 SERIES) SCREWS WITHOUT WASHERS - PACK OF 100

DESCRIPTION	SCREW SIZE	ITEM CODE
Galvanized Screw without Washer, 6mm diameter	6.3x19.5	109871
	6.3x21	109872
	6.3x22.5	109873
	6.3x24	109875
	6.3x25.5	109877
	6.3x27	109879
	6.3x28.5	109881
	6.3x30	109883
	6.3x31.5	109885
	6.3x38	109886
Stainless* Screw without Washer, 6mm diameter	6.3x22.5	109874
	6.3x24	109876
	6.3x25.5	109878
	6.3x27	109880
	6.3x30	109884

\*316 Stainless Steel

# Super-Screw® Selection Guide

The four inputs needed to order a Super-Screw® splice are below. The complete part number will be in this order: "A – B – C – D"

**A) Super-Screw Series.** See Series Selection Guide below for selecting the appropriate series based on PIW and minimum pulley diameter.

**B) Rubber Compound.** See Rubber Compound Selection Guide below for selecting the appropriate rubber compound.

**C) Belt Thickness After Skiving.** See Thickness After Skive Guide below for selecting the correct screw.

**D) Splice Length.**

- Super-Screw® Evolution has an 18° bias installation requirement, so splice length must be longer than belt width. The formula for length to order Evolution is (Belt Width) × (1.067) then round down to the nearest inch.
- Super-Screw® Original has a 5° bias installation requirement, so splice length required is equal to belt width (example: order a 36" splice for a 36" wide belt).
- You can also refer to the Splice Length Selection Guide below for total splice length needed for common belt widths.

## Example:

**Belt Tension Rating: 330 PIW (63 Series)** Select from Row "A" in Super-Screw Series Selection Guide

**Rubber Compound: Gravel (Abrasion Resistant = AR)** Select from Column "B" in Rubber Compound Selection Guide

**Belt Thickness After Skive: 5/16" (8mm)** Select from Column "C" in Belt Thickness After Skive Guide

**Belt Width: 36" (63 Series is Evolution so 36 x 1.067 = 38" splice length)** Select from Column "D" under 63/65 header in Splice Length Selection Guide

Ordering Number: **63-AR-8-38**

## A SUPER-SCREW® SERIES SELECTION GUIDE

Super-Screw Series	Type	Max Belt Tension	Min Pulley Diameter		Belt Thickness After Skiving		Top of Splice Thickness (+/- 1mm)		Bottom of Splice Thickness (+/- 1mm)		Overall Width of Splice		Full Roll Size	
			PIW	in	mm	in	mm	in	mm	in	mm	in	mm	in.
35 Series	Evolution	200	6	160	5/32-1/2	3.2-14	1/8	3.5	1/8	3	2-27/32	72	984	25
63 Series	Evolution	360	8	200	5/32-1/2	3.2-16	5/32	4	1/8	3	4-9/16	116	984	25
65 Series	Evolution	360	8	200	5/32-1/2	3.2-15	1/4	6	1/8	3	4-9/16	116	984	25
80 Series	Evolution*	450	10	250	5/32-1/2	4.8-15	1/4	6	3/16	4.7	6-5/16	160	984	25
85 Series	Original	450	10	250	5/32-19/32	4.8-16	5/16	7.5	3/16	4.5	5-7/8	156	984	25
100 Series	Original	650	12	300	5/32-19/32	4.8-16	5/16	7.5	3/16	4.5	5-7/8	156	984	25
105 Series	Original	650	13	330	5/32-19/32	4.8-14	11/32	9	3/16	4.5	5-7/8	156	984	25
180 Series	Original	1030	16	400	9/32-13/16	2.8-20	9/32	7	1/4	6	10-1/2	266	590	15
200 Series	Original	1200	20	500	9/32-3/4	4.8-20	11/32	9	1/4	6	10-1/2	266	590	15
250 Series	Original	1430	32	800	9/32-3/4	4.8-18	7/16	10.5	5/16	8	10-1/2	266	590	15

\*Note: 80 Series is currently transitioning from Original to Evolution. Only Original is available until stock is depleted. Contact Customer Service for availability.

## B RUBBER COMPOUND SELECTION GUIDE

RUBBER COMPOUND	COLOR ON SPLICE STRIPE	SPECS	APPLICATIONS
AR (Abrasion Resistant)	White	Lowest DIN Rating (most resistant to abrasion)	Sand, Gravel, Quarries, Cement, Abrasive Applications
HOT	Orange	Heat Resistant up to 392°F	High-Temp Applications from 170° to 392F. Clinker, Foundries, Hot Sand
MOR (Moderately Oil Resistant)	Green	Moderately Oil Resistant	Wood, Pulp & Paper, Sawmills
SS (Stainless Steel)	White, Green or Blue Outlined in Yellow	AR, OR, or MSHA rubber compound with 316 stainless screws and internal hardware	Corrosive Environments, Chemical Fertilizer Plants, Chemical Plants, some Mining Applications
MSHA (Fire-Resistant/Anti-Static, Anti-Sparking)	Blue	MSHA/Fire-Resistant/Anti-Static	Underground Mining, Coal, Silos
White (FDA/USDA Food Grade)	Splice all White	FDA/USDA Food Grade	Food
AR BB/FB/SB (Bare back/Friction Back/Sliding Bed)	White with Bottom Ply Exposed	Abrasion resistant rubber compound with an extra ply vulcanized onto bottom.	Where an impact bed is present. Many times a standard AR will work. Use this for continuous sliding bed applications and on bare back belts
MOR BB/FB/SB (Bare back/Friction Back/Sliding Bed)	Green with Bottom Ply Exposed	MOR rubber compound with an extra ply vulcanized onto bottom.	Where an impact bed is present. Many times a standard MOR will work. Use this for continuous sliding bed applications and on bare back belts

# Super-Screw® Selection Guide

## THICKNESS AFTER SKIVE GUIDE

Thickness After Skive*			Screw Length Needed (mm)									
in.	mm	<b>C</b> mm Rounded Up	35	63	65	80	85	100	105	180	200	250
1/8	3.2	4	10	10	12	-	-	-	-	-	-	-
3/16	4.8	6	12	12	14	14	16	16	18	19	21	25.5
1/4	6.4	8	14	14	16	16	18	18	20	21	22.5	27
5/16	7.9	8	14	14	16	16	18	18	20	21	22.5	27
3/8	9.5	10	16	16	18	18	20	20	22	22.5	24	28.5
7/16	11.1	12	18	18	20	20	22	22	24	24	25.5	30
1/2	12.7	14	20	20	22	22	24	24	30	25.5	27	31.5
9/16	14.3	15	-	22	24	24	30	30	-	27	28.5	38
5/8	15.9	16	-	24	-	-	30	30	-	28.5	30	38
11/16	17.5	18	-	-	-	-	-	-	-	30	31.5	38
3/4	19.1	20	-	-	-	-	-	-	-	30	38	-

\*Top (or top and bottom) cover of the belt must be skived to this thickness for the screws to engage. **Screw length is not equal to thickness after skive.** The screws are longer to go through the Super-Screw top strip, belt, and bottom strip.

## EVOLUTION SPLICE LENGTH SELECTION GUIDE

BELT WIDTH		35 SERIES			63/65 SERIES			80 SERIES EVOLUTION*		
in.	mm	<b>D</b> SPLICE LENGTH	NO. OF SCREWS	NO. OF SPACERS	<b>D</b> SPLICE LENGTH	NO. OF SCREWS	NO. OF SPACERS	<b>D</b> SPLICE LENGTH	NO. OF SCREWS	NO. OF SPACERS
12	300	12	28	2	12	56	2	12	84	2
18	450	19	44	2	19	88	2	19	134	2
24	600	25	58	3	25	116	3	25	176	3
30	750	32	74	3	32	148	3	32	224	3
36	900	38	88	4	38	176	4	38	266	4
42	1050	44	102	4	44	204	4	44	308	4
48	1200	51	118	4	51	236	4	51	358	4
54	1350	57	132	5	57	264	5	57	400	5
60	1500	64	148	5	64	296	5	64	448	5
72	1800	76	176	6	76	350	6	76	532	6
84	2100	89	206	7	89	410	7	89	624	7
120	3000	128	294	8	128	589	8	128	896	10
<b>Per-Inch Screw Multiplier:</b>			<b>2.3</b>		<b>4.6</b>			<b>7.0</b>		

\*Note: 80 Series is currently transitioning from Original to Evolution. Only Original is available until stock is depleted. Contact Customer Service for availability.

## ORIGINAL SPLICE LENGTH SELECTION GUIDE

BELT WIDTH		80/85/100/105 Series Original			180/200/250 SERIES		
in.	mm	<b>D</b> SPLICE LENGTH	NO. OF SCREWS	NO. OF SPACERS	<b>D</b> SPLICE LENGTH	NO. OF SCREWS	NO. OF SPACERS
12	300	12	94	2	12	80	2
18	450	18	140	3	18	120	3
24	600	24	186	4	24	160	4
30	750	30	232	5	30	200	5
36	900	36	278	6	36	240	6
42	1050	42	324	7	42	280	7
48	1200	48	370	8	48	320	8
54	1350	54	416	9	54	360	9
60	1500	60	462	10	60	400	10
72	1800	72	556	11	72	480	11
84	2100	84	648	13	84	560	13
120	3000	120	924	15	120	799	15
<b>Per-Inch Screw Multiplier:</b>			<b>7.7</b>		<b>6.66</b>		

# Fix'N Go<sup>®</sup> Belt Repair System

## REPAIR KIT ROLLS

DESCRIPTION	RUBBER COMPOUND	SCREW TYPE	ITEM CODE
Fix'N Go 2 Meter Kit - AR Fix'N Go 2 Meter Kit - HOT	AR Abrasion Resistant HOT 400° F	Galvanized or Stainless	Configurable items: 4 inputs needed: (Rubber Compound)- (Length)-(Screw Type)- (Screw Lengths)
Fix'N Go 20 Meter Kit - AR Fix'N Go 20 Meter Kit - HOT	AR Abrasion Resistant HOT 400° F		

2 meter/79" kits include 300 screws with washers and 1 PZ2 Drive Bit  
 20 meter/787" kits include 3000 screws with washers and 10 PZ2 Drive Bits  
 \*There is an upcharge if stainless screws are selected



The four inputs needed to order a Fix'N Go<sup>®</sup> splice are below.

**Format:** FNG-(rubber compound)-(length)-(screw type)-(screw length 1)-(screw length 2)

- Prefix: **FNG** optional
- Rubber Compound: **AR** or **HOT**
- Length: **2** or **20** meters
- Screw Type: **GALV** or **SS** for galvanized or stainless
- Screw Length 1: Select from size options in the chart below. (If only one screw length needed, all 300 or 3000 will be the same size.)
- Screw Length 2 (optional): Select from size options in the chart below. (If two screw lengths needed, default split will be 150 or 1500 of each.)

**Example:** Fix'N Go with AR rubber, 2 meter kit, 14mm and 16mm galvanized screws:  
**FNG-AR-2-GALV-5X14-5X16**

## FIX'N GO<sup>®</sup>

### SCREWS WITH WASHERS - PACK OF 100

DESCRIPTION	SCREW SIZE	ITEM CODE
Galvanized Screw with Washer, 5mm diameter	5x10	109844
	5x12	109848
	5x14	109852
	5x16	109856
	5x18	109860
	5x20	109864
Stainless* Screw with Washer, 5mm diameter	5x10	109846
	5x12	109850
	5x14	109854
	5x16	109858
	5x18	109862
	5x20	109866



\*316 Stainless

2 meter kits include 300 screws and 20 meter kits include 3,000 screws.  
 For additional screws contact Customer Service for information and ordering.

## DRIVE BITS

DESCRIPTION	ORDERING NUMBER	ITEM CODE
PZ2 Bit	PZ2B	110274



Customer Experience: 1.800.541.8028



PRODUCT HANDBOOK

# Belt Skivers

## PS15 HOT KNIFE SKIVERS

DESCRIPTION	ORDERING NUMBER	ITEM CODE
PS15 Hot Knife Skiver Kit	PS15-SK	110270
PS15 Skiver Blades (Pack of 20)	PS15RB-C6	110269

### PS15 Skiver:

- The PS15 Standard is a 120V corded hot knife used for skiving the rubber covers off edges and center of belts.
- Kit includes PS15 Hot Knife Skiver, 4mm Allen key, 20 C6/W6 replacement blades, and toolbox.
- Skives belt covers from 1/16" to 5/8" (1.5mm to 16mm) thick.



## FEIN OSCILLATING TOOLS

(Blades are ordered separately)

DESCRIPTION	DETAILS	ORDERING NUMBER	ITEM CODE
FEIN Cordless Skiver with Batteries (Tool and Batteries have AMPShare Battery System)	Includes 18V tool, 2 AMPShare batteries, 1 charger, whetting stone, case (blades ordered separately)	FS-CLS2B	109887
FEIN Cordless Skiver without Batteries (Tool and Batteries have AMPShare Battery System)	Includes 18V tool, whetting stone, case (blades ordered separately)	FS-CLS2	109769
FEIN AMPShare Battery Kit ‡	Includes 2 AMPShare batteries and 1 charger	F-BATTERY2	109770
FEIN Battery Kit for FEIN tools WITHOUT AMPShare Battery (for tools ordered in 2023 or prior)	Includes 2 batteries and 1 charger for tools without AMPShare platform	F-BATTERY	110254
FEIN 110V Corded Skiver	Includes corded tool, whetting stone, case (blades ordered separately)	FS-C110	110247
FEIN Cordless Drill	Includes 18V drill, handle, 2 batteries, 1 battery charger, case, 2PZ2 and 2PZ3 Bits	FD-CLK	110538
FEIN Blade Whetting Stone	1 whetting stone	F-WS	110246

\*Tools and batteries equipped with AMPShare Battery System are not interchangeable with tools/batteries that are not on the AMPShare platform.

‡ For tools with AMPShare platform only

### FEIN Oscillating Skiver:

- The FEIN Oscillating Skiver is used for skiving the rubber covers off edges and center of belts.
- Skives belt covers from 3/32" to 3/8" (2mm to 10mm) thick.
- All FEIN items are sold individually.



## FEIN OSCILLATING TOOL BLADES

DESCRIPTION	ORDERING NUMBER	ITEM CODE
1-3/4" (45mm) Wide Swerved Blade	F-SWB	110236
1-3/4" (45mm) Wide Straight Blade	F-STB	110235
<b>BLADES FOR BELT ENDS</b>		
Belt End Blade 1/4" (6.5mm) Depth 1-9/16" (40mm) Wide	F-BEB-1/4	110237
Belt End Blade 3/16" (4.5mm) Depth 1-9/16" (40mm) Wide	F-BEB-3/16	110238
Belt End Blade 1/8" (2.5mm) Depth 1-9/16" (40mm) Wide	F-BEB-1/8	110239

DESCRIPTION	ORDERING NUMBER	ITEM CODE
<b>BLADES FOR BELT CENTER</b>		
Belt Center Blade 3/8" (10.5mm) Depth 1-3/8" (35mm) Wide	F-BCB-3/8	110244
Belt Center Blade 5/16" (8.5mm) Depth 1-3/8" (35mm) Wide	F-BCB-5/16	110245
Belt Center Blade 1/4" (6.5mm) Depth 1-9/16" (40mm) Wide	F-BCB-1/4	110240
Belt Center Blade 3/16" (4.5mm) Depth 1-9/16" (40mm) Wide	F-BCB-3/16	110241
Belt Center Blade 1/8" (2.5mm) Depth 1-9/16" (40mm) Wide	F-BCB-1/8	110242
Belt Center Blade 3/32" (2mm) Depth 1-9/16" (40mm) Wide	F-BCB-2MM	110243



## BELT CHAMFER TOOL

DESCRIPTION	ORDERING NUMBER	ITEM CODE
Belt Chamfer Tool	BC-TOOL	114459

2525 Wisconsin Avenue • Downers Grove, IL 60515-4200 U.S.A.  
Tel: (630) 971-0150 • Fax: (630) 971-1180 • E-mail: info@flexco.com

Visit [www.flexco.com](http://www.flexco.com) for other Flexco locations and products

©2024 Flexible Steel Lacing Company. 09/20/24. W2057

