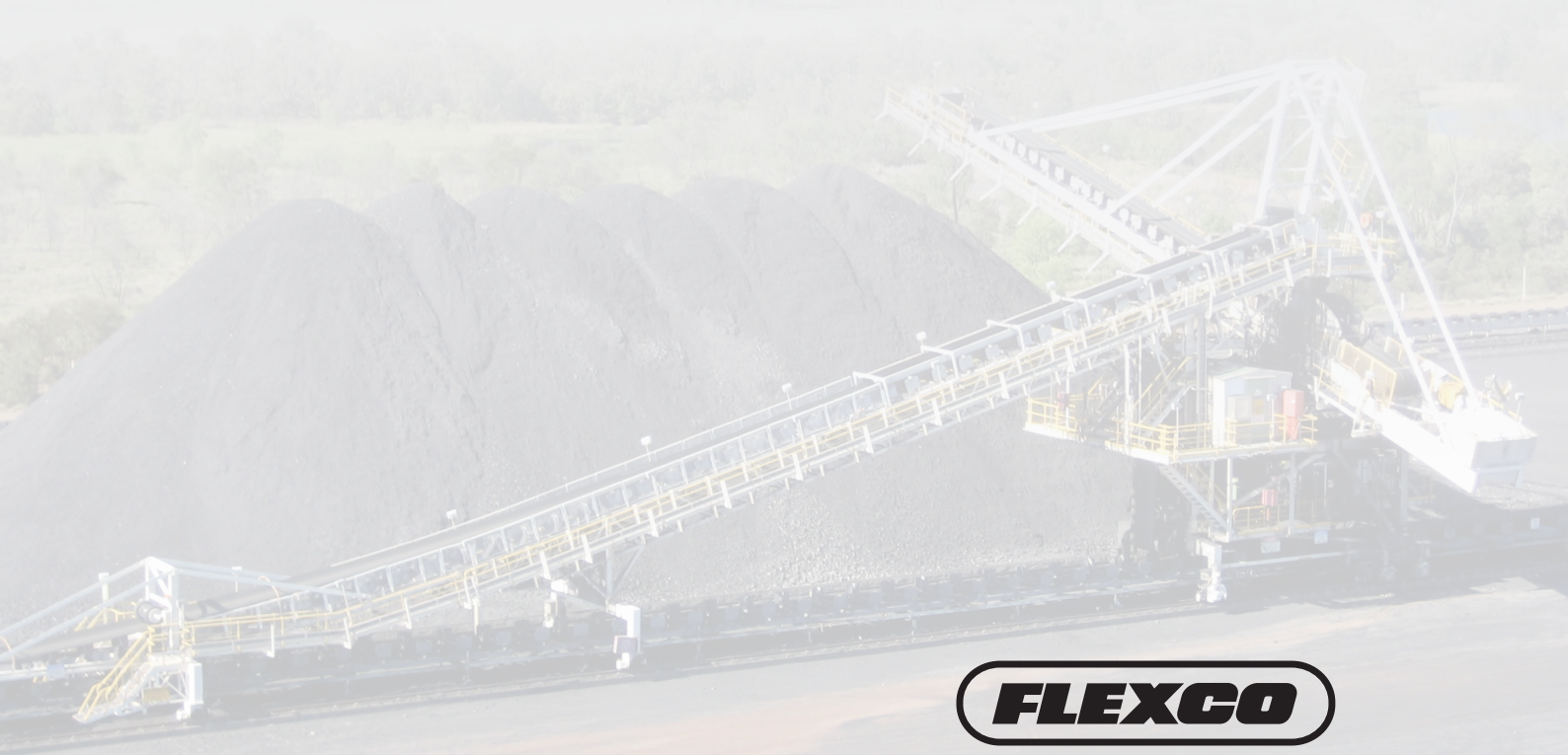




# COAL MINING

Flexco is committed to keeping your belts and your business moving



**FLEXCO**

*Partners in Productivity*

# FLEXCO UNDERSTANDS COAL MINING

## WHY FLEXCO?



When you are conveying the toughest, most abrasive materials in the world, you can count on Flexco solutions to keep belts running at maximum productivity. For over 110 years, Flexco has continually striven to improve the performance of conveyor operations in the coal industry, determined to be the best at what we do and lead with excellence.

### Our Partnership Approach

- Where possible, our sales members will meet you at your facility to help understand your belt conveyor system problems and recommend the correct solutions for your application.
- Service professionals are available to install, service and train to make sure your Flexco products are performing optimally 24/7.
- Our customer support team is there whenever you need them to help with any queries or concerns that come your way.

## HOW FLEXCO CONTRIBUTES EXPERTISE TO THE COAL MINING SECTOR

### Key Partnerships

During our 30+ years of working in Africa, our team has built a strong relationship based on trust within the Coal Industry. Our attention to detail, consistent performance, and deep understanding of belt conveyor systems is how we have provided value for our partners in productivity.

### Coal Focus

We spend countless hours working alongside coal customers to understand the nuances of their everyday challenges, and we used our hard-won knowledge to design a comprehensive line-up of belt conveyor products to address their pain points throughout the coal mining process.

### Innovation

As we continue to grow and expand, we are focused on meeting operational challenges with fresh ideas and world-class innovation. While adapting to ever-changing market conditions, our experience is the foundation for new conveyor systems solutions, advanced material science, engineering strategies that optimize operations, and predictive conveyor maintenance.

## FLEXCO ELEVATE®

Flexco is redefining the connection between people and technology in mining operations with Flexco Elevate®. This wireless solution is built on the power of predictive data insights which allow for real-time, remote monitoring of belt cleaners to increase operational efficiency and transparency.

### Asset Management

Elevate can map all installed Flexco cleaners at your location, across operations and existing assets.

### Immediate ROI

Data insights are immediately transferred to your Elevate dashboard so you can realize increased operational efficiency from day one.

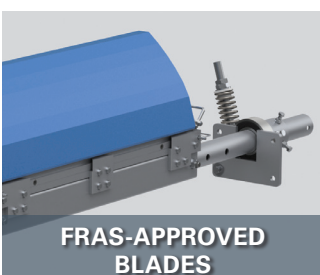
### Increased Productivity

Elevate can tell you exactly when and where to deploy maintenance support with no guesswork needed.

### Improved Safety

Elevate reduces, and in most cases eliminates, the need for dangerous physical inspections.

## CUSTOM ENGINEERED SOLUTIONS



Flexco has custom engineered a unique FRAS approved polyurethane blend for a range of belt cleaner blades to cater to the South African underground coal mining industry.



From belt cleaners to belt trackers, our collection of Mineline® products have been designed and manufactured to specifically meet the hardwearing requirements of coal mines, all while still being cost effective.

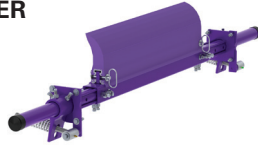
## CARRYBACK

**THE PROBLEM:** Carryback is the product that makes its way past the drop off point and runs back along the underside of the conveyor belt. When carryback leaves the belt, it typically falls to the ground, creating mountains of product buildup. This isn't only a significant on-site hazard, but it creates a clean-up job that can lead to unscheduled downtime.

### THE SOLUTION:

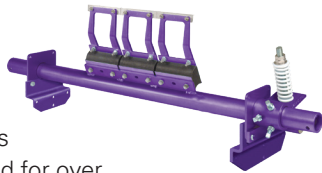
#### MMP MEDIUM DUTY PRECLEANER

The MMP Medium-Duty Precleaner tackles those tough applications where a standard-duty precleaner is not robust enough. The MMP is built tough with a heavy-duty pole and a larger, more powerful blade. The TuffShear™ is a solid, urethane blade that is designed for high abrasion resistance and boasts a lifespan that is up to 30 percent longer than conventional blades; this also includes a beefy, dual tensioning system. Installation is simple, maintenance is easy, and the cleaning results are excellent.



#### H-TYPE® SEGMENTED BLADE PRECLEANER

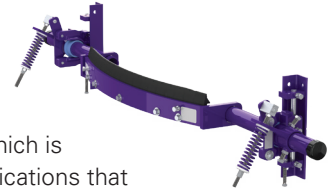
The H-Type® Precleaner is uniquely designed to efficiently remove carryback and maintain performance – even as the blades wear. It has proven performance in the field for over 20 years and is available in several segmented



blade options to match your application requirements. The blades are available in urethane and tungsten carbide, working independently to power the blade to the belt and wear evenly. While tungsten carbide cleaners such as the H-Type will offer greater cleaning efficiency, using a polyurethane cleaner such as the MMP will give you a high level of cleaning power for belts that are profiled or worn.

#### U-TYPE® SECONDARY CLEANER

The U-Type® Secondary Belt Cleaner is designed for constant blade-to-belt contact resulting in the highest cleaning efficiency, which is especially useful in tough applications that require removal of water and sticky carryback materials. The U-shaped design conforms to the belt, allowing the blade tip to shear stubborn carryback materials from the belt.



Blade replacement is made easy with the U-Type's removable plate. Simply release the blade tension, loosen the bolts on the back of the cleaner pole, slide the worn blade out, insert the new blade and retighten the bolts. The job can be done in mere minutes.

*\* The Flexco Minline® endorsement means the product is proven in heavy-tonnage applications that test the strength and durability of your conveyor system.*

## SPILLAGE AND THE LOAD ZONE

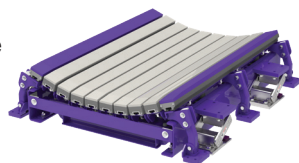
**THE PROBLEM:** Heavy impact on the conveyor can cause severe damage. Offering support in the load zone is crucial to protect the belt and extend its life.

Spillage occurs when material falls off the belt conveyor in areas other than the discharge point, usually near the load zone. This can lead to sharp and potentially large pieces of material going through the tail pulley, risking damage to the belt. To prevent this, properly maintaining your load zone components and keeping the loaded material centered is essential.

### THE SOLUTION:

#### IMPACT BEDS

Flexco has the right load zone solutions for high-impact applications like coal-fired power plants, coal prep plants, and load-out facilities.



Flexco's DRX™ Impact Beds are designed with one simple goal: protect the belt. How we meet that goal is

revolutionary. We've engineered superior belt protection into the entire structure – not just the bars. Sturdy components, robust construction and convenient maintenance make our product more durable and efficient.

#### SKIRTING SYSTEMS

One of the most important jobs of the load point is to provide a seal that prevents material spillage and controls dust. Specially designed to create an effective seal at load points without damaging the top cover of your belt, Flexco skirting systems are a smart way to improve throughput.



Our versatile line of skirting solutions are all easy to install and maintain on your beltline.

*\*The Flexco Minline® endorsement means the product is proven in heavy-tonnage applications that test the strength and durability of your conveyor system.*



## CONVEYOR ASSESSMENTS

Having a third party review your conveyor system can prove to be an effective way to identify performance, maintenance and safety concerns that can be critical to minimizing downtime and maximizing your productivity. Flexco's assessment program allows you to proactively address belt conveyor concerns before they lead to costly repairs and unscheduled downtime. Focusing on issues such as spillage, carryback, belt slippage, and mistracking, Flexco specialists will record their findings and return to your operation with a complete recommendation on the system, identifying immediate needs and suggesting future fixes.

## SAFETY AND QUALITY

Flexco is committed to safety and quality. Our hands-on industry experience gives us deep insight into your productivity demands, maintenance, and safety requirements. We have continuously shown the ability to deliver exceptional customer satisfaction and retention results directly from our commitment and strong quality control processes.

# EDUCATION AND TRAINING



### ONLINE

Flexco University is your central source for information on Flexco products. Our online learning tool is a perfect beginner or refresher course for in-class attendees to reinforce practical skills. From selecting the right productivity-boosting solution to proper install techniques, you'll find all you need to become an expert on our solutions. Courses cover all skill levels and can be taken as online sessions at your own pace and convenience.

### IN CLASS

Our Johannesburg office in Gauteng, South Africa, offers well-equipped training facilities to accommodate a comprehensive training program that incorporates both classroom presentations and hands-on learning. Spanning over two days, Flexco specialists provide extensive technical information and practical demonstrations to assist you with problem solving, maintenance and safety on-site.

### ON-SITE

Flexco Field Specialists can visit you in person and conduct hands-on, practical training right on the conveyor. Our specialists have a number of materials to assist them in conducting valuable training sessions at your facility, including demonstration products and samples, as well as theoretical information for attendees.

235 Albert Amon R | Meadowdale Ext. 7 | Germiston 1614 | South Africa  
Tel: +27-11-608-4180 | E-mail: flexco\_sa@flexco.com

[www.flexco.com](http://www.flexco.com)

©2024 Flexible Steel Lacing Company. W1938. 05/02/24



*Partners in Productivity*