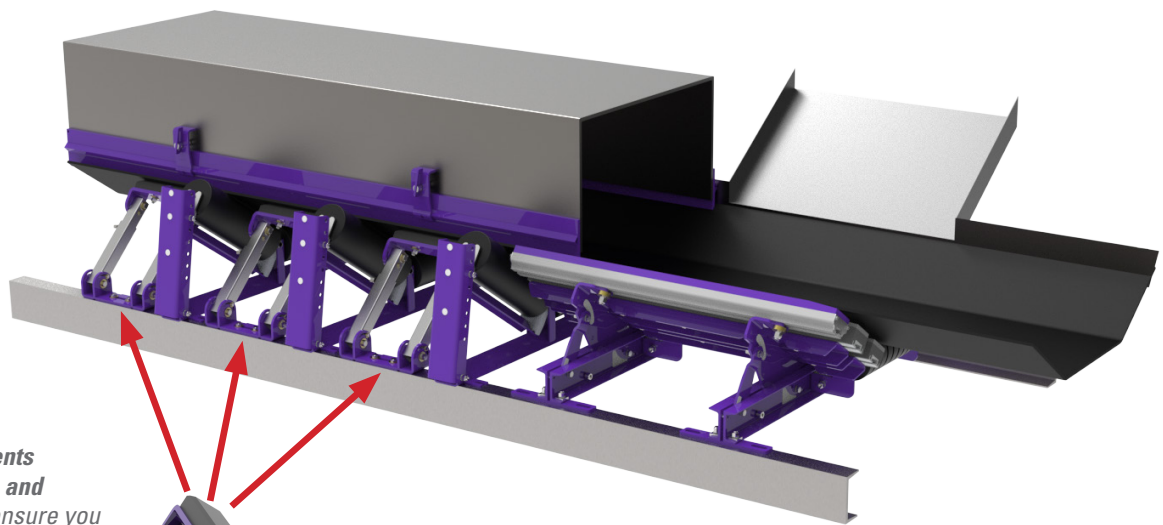


# BELT SUPPORT BAR

## Support Your Belt at the Load Zone

A sagging belt in between idlers in the load zone could mean that dust is escaping, thus creating a potentially dangerous environment. Additionally, this could lead to uneven wear on the existing skirting, causing the seal on the belt to fail and require frequent adjustments and replacements. The Belt Support Bar (BSB) has been specially engineered to help solve both problems. By supplying support from underneath the belt and in between idlers, the BSB helps to flatten the belt to return your load zone to the sealed position that is needed for a safe and efficient conveyor system.



*Versatile adjustments with the base, top, and telescoping tube ensure you flatten the belt exactly where the skirting is installed*

*Fits anywhere you have idler gaps between 16" to 30" to create a sealing surface*

*Simple installation by bolt-on or welding to existing conveyor structure*



*Support from the underside of the belt can help eliminate sag and prevent dust from escaping*

## Features and Benefits

- **No equipment modification needed.** The Belt Support Bar can fit in between existing idlers, requiring no modification of existing equipment.
- **Modular design.** Telescoping tubing allows for adjustable length and rotating hinges help create the perfect approach and bar angles to fit your load zone setup.
- **Easy to install.** With only four bolts needed to mount a pair of BSBs to your conveyor structure, there is no need to pick up the belt or move idlers.
- **Low maintenance.** The 1" (25mm) UHMW wear bars can last for months and require virtually no adjustment.

# BELT SUPPORT BAR

## Specifications and Guidelines

### Maximum Belt Speed

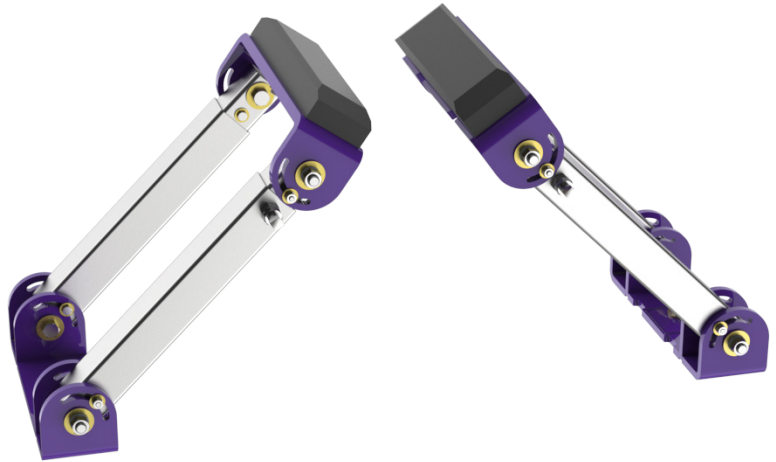
1000 FPM (5 M/sec)

### Temperature Rating

-20 to 180°F (-28 to 82°C)

### Horizontal Clearance Required

16" to 30" (406 to 762mm)



## Ordering Information

Belt Support Bar				
Size	Ordering Number	Item Code	Weight	
			Lb.	Kg.
1	BSB-1	112918	50.1	22.7
2	BSB-2	112919	52.4	23.8
3	BSB-3	112920	53.6	24.3
4	BSB-4	112921	61.3	27.8
5	BSB-5	112922	67.2	30.5
6	BSB-6	112923	83.5	37.9

Refer to the chart below for correct size.

BELT WIDTH		TROUGH ANGLE		
in.	mm	20°	35°	45°
18	450	SIZE 1	SIZE 1	SIZE 1
24	600	SIZE 1	SIZE 2	SIZE 2
30	750	SIZE 2	SIZE 3	SIZE 3
36	900	SIZE 2	SIZE 4	SIZE 4
42	1050	SIZE 3	SIZE 4	SIZE 4
48	1200	SIZE 3	SIZE 4	SIZE 5
54	1350	SIZE 4	SIZE 5	SIZE 5
60	1500	SIZE 4	SIZE 5	SIZE 5
72	1800	SIZE 5	SIZE 5	SIZE 6
84	2100	SIZE 5	SIZE 6	SIZE 6
96	2400	SIZE 6	SIZE 6	SIZE 6

Visit [www.flexco.com](http://www.flexco.com) for other Flexco locations and products, or to find an authorized distributor.

