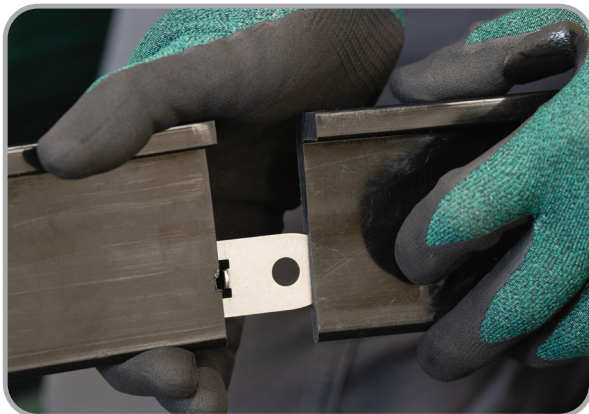
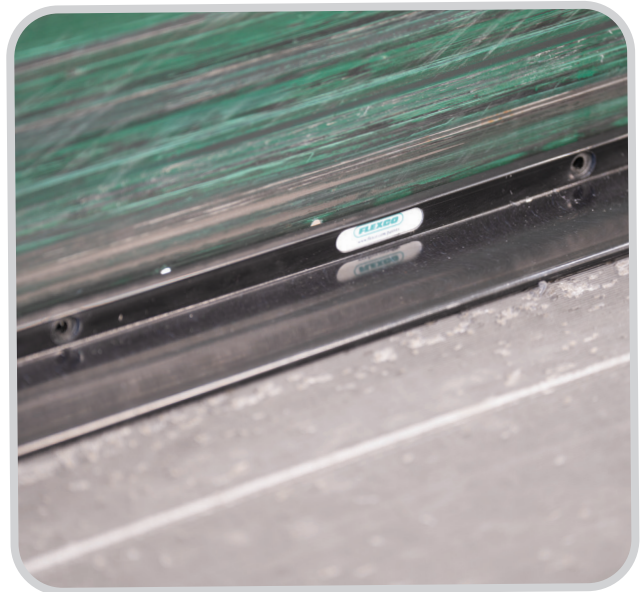


# Belt Edge Protector

## Reduce Product Loss and Prevent Belt Damage on Belt Conveyors

Day after day, logistics facilities process countless packages that are continually transferred through intricate conveyor systems. These systems are filled with belts, chutes, transfer points, and other technical parts that make everything go. Unfortunately, all of these are susceptible to damage and jamming that can bring the whole operation to a halt. That's where Flexco comes in. Our Belt Edge Protectors (BEP) can help negate product loss and unplanned downtime by preventing packages from sliding beneath the belt.



### Features and Benefits

- Made from recycled, wear resistant UHMW
- Covers edge of belt and prevents packages from becoming jammed beneath
- Available in 2.4m (8') pieces and easily cut to fit any conveyor length
- Included link plate creates seamless install between pieces
- Easy to stage and quickly installs to the side wall of the conveyor system

### How to order:

1. Determine total length of conveyors to be Protected and decide whether both belt edges will have BEPs installed to calculate total number of feet required.
2. Determine the number of Protector kits required. Each kit comes with (8) 2.4m (8') pieces for a total of 19.5m (64') per kit.
3. Determine how many Install Kits are needed, taking into consideration number of BEP Kits being ordered, number of systems requiring installation, and the number of labor crews working simultaneously.

**NOTE:** Install Kits are required for proper installation. Each

Installation Kit comes with drill bits and additional shims needed to properly align BEPs to the belt and fasten them to the conveyor side wall. Install Kits also include an appropriate size wrench for convenient installation.

#### Belt Edge Protector Ordering Information

Description	Ordering Number	Item Code
Box of 8 BEP pieces and hardware	BEP-2.4U-KIT	108340
Installation kit of shims and drill bits	BEP-INSTALL	109455
Bulk pack of 20 metric BEP kits. 160 pieces and hardware.	BEP-2.4U-BULK	116211

Patents: [www.flexco.com/patents](http://www.flexco.com/patents)

Visit [www.flexco.com](http://www.flexco.com) for other Flexco locations and products, or to find an authorized distributor.

©2023 Flexible Steel Lacing Company. 07-23-24. W1844

