



SMART SOLUTIONS FOR BELT CONVEYOR OPERATIONS



Partners in Productivity



HELPING YOU **MAXIMIZE** YOUR PRODUCTIVITY

As a world leader in belt conveyor solutions, Flexco understands the challenges facing belt conveyor systems, like those in hard rock mines, coal, and aggregate operations. That's why we offer an extensive line of tough, durable belt conveyor products that increase uptime and output. Plus, we employ an experienced team who can help you make the right selections for your system.

INCREASE UPTIME

Flexco manufactures a wide range of Mechanical Belt Fastening Systems to get your belts up and running fast — and keep them running — even in the most demanding material handling applications.



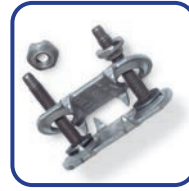
Flexco® SR™ Rivet Hinged Fasteners

Features:

- Hinged fastener with self-setting rivets
- Low-profile, Scalloped Edge™ design that reduces exposure to cleaner blades, skirt rubber, and return idlers
- Ideal for belts with tension ratings up to 2000 PIW (Belt strengths up to 3500 kN/m) and minimum pulley diameters from 5" – 42" (125 – 1050 mm)
- Available in a variety of metal types to best suit your application

Recommended for:

- Underground and surface mining, coal and hard rock, asphalt plants, pulp and paper, and other demanding applications, with a belt thickness from 1/8" – 1" (3 – 25 mm)



Flexco® Bolt Solid Plate Fasteners

Features:

- Quickly and easily installed on site using portable hand and power tools
- Sift-free splice with superior hold
- Ideal for belts with tension ratings up to 620 PIW (Belt strengths up to 1080 kN/m) and minimum pulley diameters from 12" – 48" (300 – 1200 mm)
- VP™ style available with rubber covered top plates for increased impact protection and compatibility with belt cleaners
- Available in a variety of metal types to best suit your application

Recommended for:

- Sand, gravel, crushed stone, and cement, with a belt thickness from 3/16" – 1-1/4" (5-32 mm)



Flexco® BR™ Rivet Solid Plate Fasteners

Features:

- Multi-point rivet attachments pass between the belt's carcass fibers to ensure maximum grip
- Scalloped Edge™ allows for increased compatibility with belt cleaners and other conveyor components
- Ideal for belts with tension ratings up to 800 PIW (Belt strengths up to 1400 kN/m) and minimum pulley diameters from 14" – 36" (350 – 900 mm)
- Available in a variety of metal types to best suit your application

Recommended for:

- High-tension applications in sand and gravel, hard rock mining, and cement with a belt thickness from 1/4" – 15/16" (6 – 24 mm)



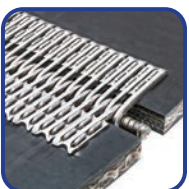
Flexco® Bolt Hinged Fasteners

Features:

- Mechanical compression fastener with high-tensile strength bolts
- Ideal for belts with tension ratings up to 300 PIW (Belt strengths up to 520 kN/m) and minimum pulley diameters from 6" – 9" (152 – 230 mm)
- Available in a variety of metal types to best suit your application

Recommended for:

- Belts with frequent belt-length alterations or smaller pulleys, with a belt thickness from 1/4" – 5/8" (6 – 16 mm)



Flexco® XP™ Staple Fastening System

Features:

- Superior staple applied belt splice for tough mining environments
- Smooth, low-profile splice for compatibility with belt cleaners and other conveyor components
- Ideal for belts with tension ratings up to 2000 PIW (Belt strengths up to 3500 kN/m) and minimum pulley diameters 10" – 20" (250 – 500 mm)
- Installed with either a manual, hydraulic, or pneumatic applicator tool
- Available in steel or stainless metals to best suit your application

Recommended for:

- Designed for use with solid woven PVG/PVC belting, with a belt thickness from 1/4" – 25/32" (6 – 20 mm)

ENHANCE SAFETY

High quality Flexco tools make each step in the belt conveyor maintenance process easier, faster, and safer.



Flex-Lifter™ Conveyor Belt Lifter

Features:

- Easily and safely lifts a tensioned belt up to the stated ratings
- Wide, dual-rail base to maintain unit stability
- Optimized lift height to provide sufficient room to make repairs safely

Recommended for:

- Top-side (troughed or flat) belts and return-side belts up to 4000 lbs (1800 kg)



FSK™ Belt Skiver

Features:

- Lightweight, portable
- Accurate and adjustable cutting depth
- Blade safely enclosed during skiving operation

Recommended for:

- Belts with rubber top covers at least 3/16" (4.5 mm) thick



TUG™ HD® Belt Clamps

Features:

- Provide grip strength across the entire belt width by clamping over the belt
- Modular components allow for increased versatility and portability
- Third-party tested. Safety factors of clamp ratings meet or exceed industry standards

Recommended for:

- 6 ton clamps are available for belts up to 72" (1800 mm) wide and up to 2" (50 mm) thick
- 8 ton clamps are available for belts up to 96" (2400 mm) wide and up to 2.25" (55 mm) thick



Electric Belt Cutter

Features:

- Available in two sizes, the EBC1 allows for cuts up to 1" (25 mm) thick while the EBC2 provides for a thicker cut up to 2" (50 mm)
- Designed for cutting all belt widths as well as for extended, longitudinal cuts
- High speed, steel blade provides for a smooth, accurate cut and is protected by a spring loaded blade guard for enhanced worker safety
- Cordless model also available

Recommended for:

- All types of belting from the softest of natural rubbers to the hardest constructed solid woven PVC and fabric plied belts



Far-Pul™ HD® Belt Clamps

Features:

- Provides even clamping tension across entire belt width for safer belt maintenance
- Securely grips belts up to 1" (25 mm) thick
- Adjusts easily for a variety of belt widths

Recommended for:

- Load capacity up to 3 ton (2.7 metric ton) when used with two 1-1/2 ton (1.4 metric ton) come-alongs



900 Series* Belt Cutter

Features:

- Safely and accurately cuts belts up to 1-1/2" (38 mm) thick
- Blade is guided at the top to ensure perpendicular cuts
- Single-sided clamp reduces operator cutting effort

Recommended for:

- Accurate, fast, safe cutting for all belting including thick and/or hard carcass belts

REDUCE CARRYBACK

Easily remove material from the conveyor belt which can cause problems with other components on the conveyor.

Precleaners



EZP1 Rockline® Precleaner

Features:

- Easy, visual check spring tensioning
- Faceted ConShear™ blade — available in standard polyurethane or high-temp options — renews its edge as it wears
- Simple, do-it-yourself installation
- Compatible with Flexco fasteners
- Available in High-Temp and Ultra High Temp

Recommended for:

- Belt ranges 12" – 72" (300 – 1800 mm) with belt speeds up to 700 fpm



EZP-LS "Limited Space" Precleaner

Features:

- Compact design
- Standard-duty, solid-blade design
- Visual tension check
- Do-it-yourself installation and minimal maintenance

Recommended for:

- Applications with Belt Ranges 12" – 60" (300 – 1500 mm) and belt speeds up to 500 fpm



MSP Standard Mine-Duty Precleaner

Features:

- Optimized blade coverage of the belt's material carrying path for better cleaning efficiency and less blade tension adjustment
- QMT Tensioner allows the blade to self-adjust to the belt as it wears for continuous cleaning
- Compatible with Flexco fasteners
- Available in High Temp and Ultra High Temp

Recommended for:

- Belt ranges 24" – 84" (600 – 2100 mm) with belt speeds up to 700 fpm



Minline® MMP Medium Mine-Duty Precleaner

Features:

- Dual-tensioned belt cleaner with larger, more durable blade
- Long-lasting TuffShear™ blade stands up to high abrasion applications
- Easy to install
- Available in Stainless Steel

Recommended for:

- Belt ranges 24" – 84" (600 – 2100 mm) with belt speeds up to 1000 fpm



Minline® MHP Heavy-Duty Precleaner

Features:

- Heavy-duty, solid blade precleaner
- Heavy 3-piece pole design with rugged, dual-spring tensioners
- Abrasion-resistant, XL solid polyurethane MegaShear™ blade

Recommended for:

- Belt ranges 24" – 96" (600 – 2400 mm) with belt speeds up to 1500 fpm (7.5 m/sec)



Minline® MHCP Heavy-Duty Cartridge Precleaner

Features:

- Quick-change cartridge for easy blade replacement
- SuperShear™ segmented blades stand up to wet, sticky material and abusive conditions

Recommended for:

- Belt ranges 24" – 84" (600 – 2100 mm) with belt speeds up to 1200 fpm



Minline® MXP Extreme-Duty Precleaner

Features:

- Ideal for use in copper, coal, iron ore, and oil sands applications
- Designed with a three-piece pole, making it easier to transport and install
- Available with 6" and 12" (150 and 300 mm) wide blade segments for material path versatility and easy replacement

Recommended for:

- Applications with belt ranges 42" – 120" (1050 – 3000 mm) wide and pulley diameters 48" (1200 mm) or larger



H-Type® Precleaner

Features:

- Unique design with segmented blades mounted on individual, pre-tensioned cushions that maintain cleaning efficiency, even as the blades wear
- Available in a variety of application matched styles for compatibility with mechanical fasteners, vulcanized belts, and high-temperature applications

Recommended for:

- Applications with belt ranges 18" – 72" (450 – 1800 mm) and belt speeds up to 1000 fpm

Secondary Cleaners



EZS2 Rockline® Secondary Cleaner

Features:

- Long-lasting tungsten carbide blades
- Patented FormFlex™ cushions allow each blade to self-adjust to the belt independently for continuous cleaning power
- Requires minimal maintenance
- Available in High-Temp

Recommended for:

- Belt ranges 18" – 72" (450 – 1800 mm) with belt speeds up to 700 fpm



Y-Type™ Secondary Cleaner

Features:

- Segmented tips easily serviced utilizing a removable cartridge
- Available with choice of Polyurethane or Tungsten Carbide blades
- Available in Ultra High Temp
- Spring tensioned to deliver optimal cleaning performance and blade life

Recommended for:

- Belt ranges 18" – 72" (450 – 1800 mm) and belt speeds up to 750 fpm
- Reversing belts



FMS Medium-Duty Secondary Cleaner

Features:

- Unique sealed cushion design allows each blade to conform to the entire belt
- Easy installation and service with MST tensioner design
- Self-adjusting tensioner maintains optimal blade tension

Recommended for:

- Belt ranges 450 – 1800 mm (18" – 72") with belt speeds up to 5.0 mps (1000 fpm)



Mineline® MHS Heavy-Duty and Reversing Secondary Cleaner

Features:

- Segmented blades with choice of tungsten carbide tips
- Patented PowerFlex™ cushions for maintaining optimal belt contact
- Two-way cushions available for reversing applications on shuttle conveyors, conveyors that roll back, or tripper and stacker applications
- Available in Stainless Steel

Recommended for:

- Belt ranges 24" – 84" (600 – 2100 mm) with belt speeds up to 1500 fpm



P-Type® Secondary Cartridge Cleaner

Features:

- For applications where space is at a premium, the P-Type® belt cleaner is a compact, secondary cleaner delivering exceptional cleaning efficiency with the service friendly cartridge feature
- For really tight space applications the P-Type LS is available, requiring only 5-1/2" (138 mm) of vertical clearance for installation
- Independently tensioned 6" (150 mm) blades
- Also available without cartridge feature

Recommended for:

- Belt ranges 18" – 84" (450 – 2100 mm) with belt speeds up to 1000 fpm



R-Type® Reversing Secondary Cartridge Cleaner

Features:

- Tungsten carbide blades for superior cleaning performance with two-way cushions that accommodate reversing belts
- Individually tensioned 6" (150 mm) cleaning tips
- Also available without cartridge feature

Recommended for:

- Reversing applications used on shuttle conveyors, conveyors that roll back, or in tripper and stacker applications
- Belt ranges 18" – 72" (450 – 1800 mm) and belt speeds up to 1000 fpm



Mineline® MHS Secondary Cleaner with Service Advantage Cartridge™

Features:

- Segmented blades with choice of tungsten carbide tips
- Patented PowerFlex™ cushions that maintain optimal belt contact
- Tensioner and cushions create 4 points of relief, making the cleaner fastener friendly
- Service advantage cartridge feature allows for easy service and inspection
- Available in Stainless Steel
- Also available without cartridge feature

Recommended for:

- Belt ranges 24" – 84" (600 – 2100 mm) with belt speeds up to 1200 fpm



U-Type® Secondary Cleaner

Features:

- U-shaped blade that conforms to the belt for superior cleaning
- Tungsten carbide blade tips scrape off stubborn materials, while rubber backer "squeegees" water off the belt
- Dual-spring tensioner delivers low, uniform blade pressure
- Long wear life with low maintenance
- Available in Stainless Steel

Recommended for:

- Tough applications with wet, sticky carryback and belt ranges 18" – 72" (450 – 1800 mm)
- Cupped conveyor belts and/or belts with worn centers with belt speeds up to 1300 fpm



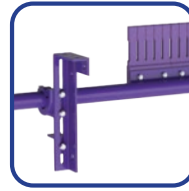
MDWS Dry Wipe Secondary Cleaner

Features:

- Specially formulated ConShear™ Dry Wipe Blade to wipe the belt dry
- Simple, visual blade tension check and accurate blade retensioning
- Extra long pole for use on most mining conveyors

Recommended for:

- The last cleaner in the cleaning system to remove water
- Belt ranges 24" – 84" (600 – 2100 mm) and belt speeds up to 1000 fpm



CFC Secondary Cleaner

Features:

- Segmented Blades, including flexible fingers, ensure efficient cleaning results
- Versatile tensioner kit can be mounted to push-up or pull-up the cleaner
- Rugged 60mm diameter pole provides exceptional strength

Recommended for:

- Mechanically spliced or vulcanized belts.
- Belt ranges 600 – 1600mm and belt speeds up to 2.5 m/s



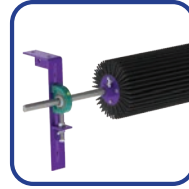
T-Type™ Secondary Cleaner

Features:

- A combination of thin and overlapping tungsten carbide blades with a robust tensioner system
- Durable, overlapping carbide blades for streakfree cleaning
- Requires minimal installation space

Recommended for:

- Belt ranges 400 mm to 1600 mm and belt speeds up to 4 m/s



Chevron Belt Cleaner

Features:

- Cleaner designed for chevron, cleated, and raised-rib belts
- Hundreds of rubber fingers create a rotary cleaning action, flicking carryback off belt
- Long-wearing SBR rubber
- Easy to install

Recommended for:

- Wet sand belts, wood chip belts, and other raised top or grooved belts
- Belt ranges 18" – 60" (450 – 1500 mm) and belt speeds up to 500 fpm



Motorized Brush Cleaner

Features:

- Maximum cleaning as it spins opposite the belt direction for optimal cleaning
- Uniquely patterned bristles aid in reducing material buildup and clogging
- Adjustable tensioners allow easy brush-to-belt adjustment as the bristles wear

Recommended for:

- Belt ranges 450 – 2100 mm (18" – 84") and belt speeds up to 3.5 mps (700 fpm)

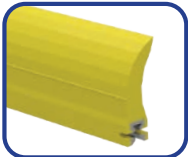
Cleaner Replacement Blades



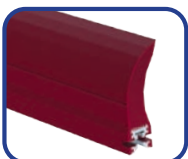
ConShear™

Features:

- Flexco offers a broad selection of application-matched belt cleaner replacement blades for both mechanically fastened and vulcanized belting
- ConShear™, TuffShear™, and SuperShear™ blades are constructed of specially formulated, long wearing polyurethane for extra abrasion resistance and extra long life
- The High-Temp ConShear™ Blade is designed for continuous, ambient temperatures up to 275° F (135° C) and spikes to 325° F (163° C)
- The Ultra High-Temp ConShear blade is built for consistent temperatures up to 400° F (204° C) with occasional spikes to 450° F (232° C).
- Impact resistant tungsten carbide blades are also available for mechanically spliced or vulcanized belts while a special, extra long wearing tungsten carbide blade is available for use on vulcanized belts only



High-Temp ConShear™



Ultra High-Temp ConShear™

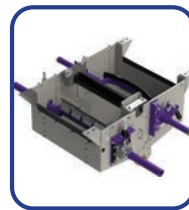


Carbide Tip

Recommended for:

- Flexco belt cleaners on both mechanically fastened and vulcanized belts as well as for cleaners from a variety of other manufacturers

Belt Cleaner Accessories



Wash Box

Features:

- Superior belt washing for tough conveying systems
- Available in galvanized or stainless steel
- Adjustable cleaner mounting plate accepts all Flexco secondary belt cleaners

Recommended for:

- Available for belts 24" – 60" (600 – 1500 mm)

TRANSFORM YOUR OPERATION WITH REMOTE, REAL-TIME BELT CLEANER MONITORING



Preventing belt conveyor failure or unexpected downtime due to belt cleaner maintenance is a primary concern for operations like yours. With Flexco Elevate®, time for manual inspections, delays in service, and safety issues with walking the line can all be minimized.

The wireless platform transfers data insight via cloud technology to the intuitive Elevate Dashboard from state-of-the-art devices attached to your Flexco cleaners. That information combines with maintenance information logged via a mobile app to provide predictive data-driven insight direct to your remote dashboard.

With Flexco Elevate® you will realize:

-  ROI from Day One with Immediate Cleaner Insights
-  Improved Safety by Avoiding Manual Inspections
-  Leverages Existing Flexco Belt Cleaners
-  Increased Productivity with Managed Maintenance
-  Easy to Install, Deploy, and Connect
-  Digital Mapping of Cleaner Assets Across your Operations
-  No Maintenance Guesswork for Service Teams

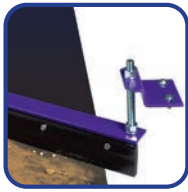
To learn more about how Flexco Elevate® and the power of predictive data can transform your operation, visit flexcoelevate.com or contact your local Flexco Representative.



Patent#
10,836,585

PROTECT THE TAIL PULLEY

Rocks, lumps, and other debris can get into the tail pulley and cause damage to the belt, splice, lagging, or pulley.



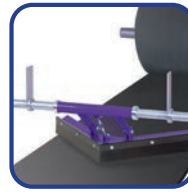
Diagonal Plow

Features:

- Angled installation discharges material to a designated side of the conveyor for easy cleanup
- Exclusive blade design “spirals” material quickly off the belt
- Long blade life with limited maintenance

Recommended for:

- Belts 18” – 84” (450 – 2100 mm) anywhere on the inside of the return belt where there is a problem with materials falling onto the belt



V-Plow

Features:

- Exclusive blade design spirals debris off the return-side belt surface
- Self-adjusting unit accommodates blade wear and keeps plow on the belt
- Easy to install on virtually any conveyor

Recommended for:

- Belts 18” – 96” (450 – 2400 mm) on any conveyor structure at the tail pulley or anywhere carryback is a problem

CORRECT BELT MISTRACKING

Conveyor structure misalignment, off-center loading, material build-up, and worn components can contribute to belt mistracking.



Belt Positioner™

Features:

- Correctly “positions” return-side belts
- Simple adjustment for variable belt conditions
- Works on the return-side belt’s bottom cover and not on the belt’s edges

Recommended for:

- Belts 18” – 96” (450 – 2400 mm) that consistently mistrack to one side of the conveyor



PTEZ™ Belt Trainer

Features:

- Unique “Pivot and Tilt” feature responds to and compensates for belt alignment without sensor rollers – the result is two forces quickly moving the belt back to center
- Polyurethane roller cover comes standard to ensure long-lasting performance
- Simple, yet versatile, mounting system ensures quick and accurate installation

Recommended for:

- Standard-Duty belt widths 18” – 48” (450 to 1200 mm) and up to 1600 PIW max tension
- Heavy-Duty belt widths 42” – 84” (1050 to 2100 mm) and up to 2400 PIW max tension



PT Smart™ Belt Trainer

Features:

- Reacts and compensates instantly to belt misalignment
- Sensor Rollers along both belt edges help drive the pivot/tilt action
- Quick and easy installation

Recommended for:

- Medium-Duty belts 18” – 72” (450 – 1800 mm)



PT Max™ Top Side Belt Trainer

Features:

- Unique “pivot and tilt” action that immediately corrects mistracking
- Two sensor rollers on each side to minimize belt edge damage
- Performs in wet and dry conditions
- Available in standard, heavy-duty, and super-duty models for the most extreme conditions

Recommended for:

- Troublesome belts 24” – 120” (600 – 3000 mm) requiring a high performance belt trainer



PT Max™ Return Side Belt Trainer

Features:

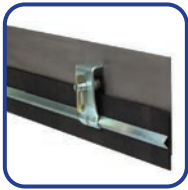
- Unique “pivot and tilt” action that immediately corrects mistracking
- Two sensor rollers on each side to minimize belt edge damage
- Performs in wet and dry conditions
- Available in standard, heavy-duty, and super-duty models for the most extreme conditions

Recommended for:

- Troublesome belts 24” – 120” (600 – 3000 mm) requiring a high performance belt trainer

ELIMINATE SPILLAGE

Material spillage along the belt line means loss of production, clean-up time, and is a safety hazard for workers.



RMC1 Skirt Clamps

Features:

- A cost-effective solution to material spillage at the loading zone
- Simple, weld-on installation
- Quick, one-person adjustment or replacement of skirt material
- Available in a standard 4' (1200 mm) length and two heights for standard load point containment

Recommended for:

- Skirt rubber thickness from 5/16" – 3/4" (8 – 19 mm)



PAL PAKs

Features:

- "Pick-A-Length" (PAL) option for long or special length requirements
- Choose from weld-on or bolt-on clamp pins as well as clamp plates in two heights for custom conveyor requirements
- PAL PAKs contain two clamp pins and two clamp plates

Recommended for:

- Applications with non-standard lengths or limited space



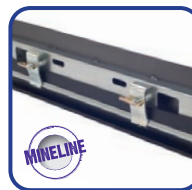
Flex-Lok™ Skirt Clamps

Features:

- Unique, anti-vibration clamp pin and wedge lock assembly
- Skirt material does not cause belt wear or groove marks when properly installed
- Available in 6' (1800 mm) lengths and two heights, Standard and Mini, for easy, custom installation that can be done by one person

Recommended for:

- Skirt rubber thicknesses from 5/16" – 1" (8 – 25 mm)



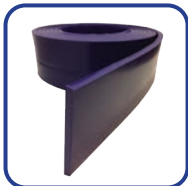
Flex-Seal™ Skirt System

Features:

- Fully seals the loading zone to eliminate spillage and dust
- Skirt rubber is automatically angled to make a low-pressure parallel seal with belt
- Standard 4' (1200 mm) lengths can be used to create skirting of any length

Recommended for:

- Skirt rubber thickness from 5/16" – 3/4" (8 – 19mm)



Standard Polyurethane Skirting

Features:

- More wear resistant than rubber – as much as 3-4 times the abrasion resistance in the same application
- Uses soft 65A durometer with exceptional tear resistance – it's the same basic formula as our best-in-class cleaner blades
- Features 35-degree chamfer to eliminate the typical skirting break-in period

Recommended for:

- Available in 25' and 50' rolls with 3/8", 1/2", 5/8", 3/4", or 1" thick and 4", 6", 8", 10", and 12" heights



Dual Seal Polyurethane Skirting

Features:

- Design provides a secondary seal to prevent dust escape in the sealing area
- More wear resistant than rubber – as much as 3-4 times the abrasion resistance in the same application
- Uses same 65A durometer and 35-degree chamfer as Standard Polyurethane Skirting

Recommended for:

- Available in 25' and 50' rolls with 1/2" or 3/4" thickness and 6" or 8" heights



Enclosed Skirt System

Features:

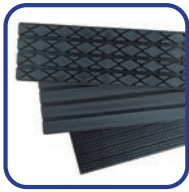
- Simple, effective containment solution
- Universal support legs make installation easy
- Two sealing options: vertical or tangential

Recommended for:

- Standard systems or can be custom engineered to fit the job requirements

REDUCE SLIPPAGE

Flexco makes it easy to find the pulley lagging you need to eliminate belt slippage, increase pulley life, improve water shedding, and boost productivity.



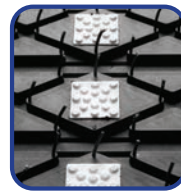
Flex-Lag® Rubber Lagging

Features:

- Available in plain and diamond-pattern
 - *Plain* – horizontal grooves between rubber strips trap and deflect water from the pulleys
 - *Diamond* – high-durometer rubber for abrasion resistance and even greater water-shedding ability
- Rubber flexes during use, preventing material build-up and belt wear

Recommended for:

- Standard applications with minimal slippage that may experience increased pulley wear



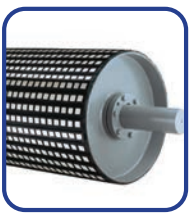
Flex-Lag® Natural Diamond Ceramic Lagging

Features:

- Ceramic tiles molded into the diamond section of the lagging, providing an increased coefficient of friction
- Diamond pattern tiles are surrounded by multiple channels to disperse water and renegade materials, allowing for improved water shedding capabilities
- Available in both natural rubber and FRAS approved rubber in convenient 21 ft. (6.5 M) cut-to-fit rolls with minimal waste

Recommended for:

- Medium tension belt drive applications and all other non-drive pulley lagging applications that need the added advantages of a ceramic product, at a more affordable cost



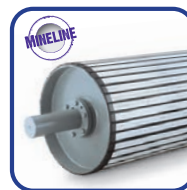
Flex-Lag® Medium Ceramic Tile Lagging

Features:

- Constructed with ceramic tiles and a durable, five-sided rubber backing
- Can be installed in situ or in a shop or factory
- Available with dimpled or smooth ceramic tiles

Recommended for:

- Suitable for most medium to high slippage lagging applications



Flex-Lag® Full Ceramic Tile Lagging

Features:

- Ceramic tiles with raised button pattern and a durable rubber backing
- Highest coefficient of friction available in lagging materials
- Easily installed without removing pulley

Recommended for:

- The most severe belt slippage conditions where exceptional traction is essential to operations



Flex-Lag® Weld-On™ Lagging

Features:

- Available in both Rubber and Ceramic styles
- Designed to standard CEMA pulley widths which minimizes the need for trimming
- Patented gear tooth design eliminates wide gutter present in other weld-on products reducing problems associated with belt vibration, cleaner chatter, and cleaner compatibility

Recommended for:

- On-site installation in heavy-duty applications

PROTECT THE BELT

Belt wear, belt damage, material degradation, or material rebound at the load point is common in high impact applications.



EZIB Flexco® Impact Beds

Features:

- Impact Bars for absorbing material impact
- Long-wearing UHMW slider bar ideal for sealing load zone
- Simply lower troughing angles to provide easy access to the bars and bolts for quick and safe maintenance.

Recommended for:

- Load point zones with light to medium impact



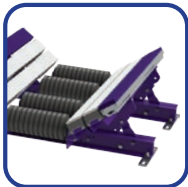
Modular Impact Beds

Features:

- Superior load zone performance with a flexible platform
- Two designs: all-bar section for high impact areas and slider impact section where lower impact resistance for sealing is required
- Units can be seamlessly combined for ultimate performance
- All bars feature 1" (25 mm) UHMS for long wear life and are quick to service with slide-out trough and center section removal

Recommended for:

- Load point zones with light to heavy impact



Slider Bed

Impact and Slider Beds

Features:

- Various models for light/medium-duty applications, as well as for simply sealing a load zone
- Slider Bed design features long lasting CoreTech™ nylon idlers and impact idlers
- Flexco Impact Beds are suitable for 200 – 750 lb-ft impacts

Recommended for:

- Load point zones with light to medium impact

MAXIMIZE YOUR OPERATION'S PERFORMANCE WITH FLEXCO

Visit our website or contact your local distributor to learn more.

www.flexco.com

