

# NOVITOO<sup>®</sup> AMIGO<sup>™</sup> Splice Press for Homogeneous Belts

## Engineered for Precision Belt Splicing

Splices in homogeneous belting must ensure tight pitch tolerance and be free from pinhole air pockets. With that in mind, everything about the Amigo<sup>™</sup> 625 and 1000 has been designed to do just that. And in typical Novitool<sup>®</sup> tradition, it was made to do it with ease, safety, and speed.

Custom templates are available to secure the belt when cutting and welding the belt ends to ensure accurate pitch control. Preheat mode dries belt ends of moisture to minimize pinholes. The Amigo Splice Press features a transport case for easy storage and transportation, making it ideal for in-shop or on-site splicing.



## Accuracy, Speed, and Safety

The Amigo 625 and 1000 feature an integrated blade with a single pass operation that cuts belt edges square. They are designed for operator safety from lacerations as the blade passes through the clamp bars and stores in a blade housing when complete.

The contactless heating element splices the belt in as little as one minute, finishing with a controlled amount of clash. It is also stored within the press when not in use, protecting the operator from possible burns.

The shielded heat zone not only provides consistent heating in various environmental conditions; it also protects the operator from the heat source during splicing. The heater stows and cools inside the press as the belt ends are brought together, fabricating the butt-weld.

## Market Applications

- Proteins
- Baking
- Snack
- Fruit and Vegetable

Patents: [www.flexco.com/patents](http://www.flexco.com/patents)

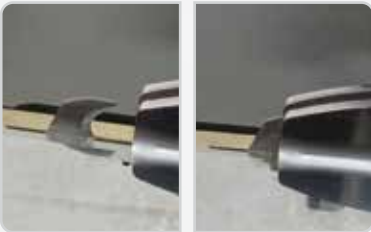
[www.flexco.com](http://www.flexco.com)



## Safety Features of the Amigo™ 625 & 1000



**Integrated Cutter:** Operator is protected from blade during single pass cutting operation.



**Cutter Storage Position:** Cutter must be in storage position for splicing function to operate.



**Shielded Heat Zone:** Guard must be closed for heat emitter to function. Operator is protected from heat source during splicing.



**Cool Zone:** Heater stows and cools inside unit as belt ends are butt-welded together.

## NOVITool® AMIGO™ Splice Press for Homogeneous Belts

### Overview

#### Features and Benefits:

- Splice time, including the time to heat the press and splice the belt, is **approximately one minute**.
- Pre-heat function dries moisture out of belt ends for **improved splice quality**, free of pinholes where bacteria can grow.
- **Unique heating element** brings the belt ends to the desired molten state without disrupting the material.
- Exclusive, **built-in safety features** like the integrated belt cutter and shielded heating element eliminates the need for utility knives and protects operators from the heat source.



The Amigo™ 625 is compact enough to be transported and used by a single operator.

Amigo™ 625



**Interchangeable Splice Templates** for precise pitch splicing of belts from various belt manufacturers



**Integrated Belt Cutter** maintains accurate pitch in a single pass

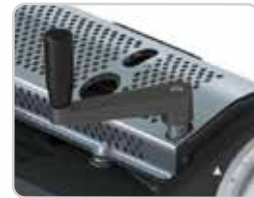
#### Amigo™ 625 Dimension Information

|  | Dimensions  | Weight           |
|--|---|------------------|
| Machine  | 1000 mm (39.4 in) x 315 mm (12.4 in) x 170 mm (6.7 in)  | 24.5 kg (54 lb)  |
| Transport Case (includes additional templates and support equipment) | 1210 mm (47.7 in) x 490 mm (19.3 in) x 385 mm (15.2 in) | 31 kg (68 lb)    |
| Total Weight   |   | 55.5 kg (122 lb) |

## NOVITool® AMIGO™ Splice Press for Homogeneous Belts



Operates on **Single Phase**  
115V or 230V



**Shielded Heat Zone and Temperature Control**  
ensures splice parameter consistency regardless of ambient temperatures



**Amigo™ 1000**



**Contactless Heating**  
provides for a controlled amount of clash without actual contact with the heat source



**Digital Time Control** with quick, simple splice settings; the **Pre-Heat Setting** can be used to remove moisture and avoid pinholes



Custom **Transport Case** for easy storage and transportation



### Amigo™ 1000 Dimension Information

|  | Dimensions  | Weight           |
|--|---|------------------|
| Machine  | 56.1" (1425 mm) × 12.4" (315 mm) × 6.7" (170 mm)  | 85 lb (38.5 kg)  |
| Transport Case (includes additional templates and support equipment) | 66.9" (1700 mm) × 19.3" (490 mm) × 15.2" (385 mm) | 80 lb (36.3 kg)  |
| Total Weight   |   | 165 lb (74.8 kg) |





# NOVITOOL® AMIGO™ Splice Press for Homogeneous Belts

| Amigo™ Press and Cable Ordering Information |                        |       |                                 |                                |       |   |
|---|------------------------|-------|---------------------------------|--------------------------------|-------|---|
| Press                                       |                        |       | Cables                          |                                |       |   |
| Ordering Number                             | Item Code              |       | Ordering Number                 | Item Code                      |       |   |
| 24.5" (625 mm)                              | AMIGO-625-SPLICEPRESS  | 09726 | 115 volt; single phase; 15 amp  | AMIGO-1000-CABLE-1X115-IEC520  | 08585 |  |
| 42" (1065 mm)                               | AMIGO-1000-SPLICEPRESS | 08545 | 230 volt; single phase; 7.5 amp | AMIGO-1000-CABLE-1X230-IECL620 | 08586 |  |

NOTE: Press, cable, and templates are all purchased separately.

| Amigo™ 625 Belt Template Ordering Information* |                       |                         |                                  |  |
|--|-----------------------|-------------------------|----------------------------------|--|
| Item Code                                      | Ordering Number       | Belt Manufacturer       | Belt Style                       | Belt Type  |
| Templates                                      |                       |                         |                                  |  |
| 09731  | AMIGO-625-TMPLT-08592 | Ammeraal Beltech        | Center Bar                       |  |
|  |                       | Intralox®               | ThermoDrive®                     | 8140 Dual Lug  |
|  |                       | Volta                   | SuperDrive™                      | FMW & FMB<br>FHW & FHB   |
| 09730  | AMIGO-625-TMPLT-08593 | Intralox®               | ThermoDrive®                     | 8050<br>8026   |
|  |                       | Mafdel                  | DEL/DRIVE                        | DD25   |
| 09732  | AMIGO-625-TMPLT-08594 | Habasit                 | Cleandrive™                      | CD.M50.S-UA.CB<br>CD.M50.S-UA.WB<br>CD.M25.S-UA.CB<br>CD.M25.S-UA.WB |
| 09733  | AMIGO-625-TMPLT-08595 |                         |                                  | Flat   |
| 09734  | AMIGO-625-TMPLT-08596 | Forbo                   | Fullseal                         | PD1 U30 & PD2 U34  |
|  |                       | Gates® TPU              | PosiClean®                       | PC10<br>PC20   |
|  |                       | UBR                     | 1" & 2" Purclean                 | PS2 & PB3  |
| 09735  | AMIGO-625-TMPLT-08597 | Beltservice Corporation | ProClean Center Drive Lug        | PCCDB<br>PCCD-MD   |
|  |                       | Daisler®                | REOClean®                        | AT40   |
|  |                       | Forbo                   | Fullseal                         | CD40- U34  |
|  |                       | Gates® TPU              | CenterClean®                     | CC40   |
|  |                       | UBR                     | Center Drive Purclean            | CD3BLSS  |
|  |                       | Yongli Belting          | HygienePro™                      | U400   |
| 09736  | AMIGO-625-TMPLT-08710 | Cog-veyor Systems Inc.  | Cog-veyor                        | UBM<br>UWM<br>PBH<br>PWH   |
| 09737  | AMIGO-625-TMPLT-08776 | Gates® TPU              | PosiLace™                        | PC20<br>CC40<br>FC12   |
|  |                       | UBR                     | Hinge Lace                       |  |
| 09738  | AMIGO-625-TMPLT-08788 | Ammeraal Beltech        | Full Bar                         |  |
|  |                       | Beltservice Corporation | ProClean 1" & 2" Pitch Drive Bar | PCPD2B<br>PCPD1B-MD  |
|  |                       | Daisler®                | ReoClean®                        | T25<br>REO-T50 DB & SB & W   |
|  |                       | UBR                     | 1" & 2" Purclean                 | PS2 & PB3  |
|  |                       |                         | DualDrive™                       | FMW & FMB<br>FHW & FHB   |
|  |                       | Volta                   | Mini DualDrive™                  | FMB & FHB  |
|  |                       |                         | Mini SuperDrive™                 | FMB & FHB  |
| 09739  | AMIGO-625-TMPLT-08847 | Volta                   | Hinge Splice                     | M (2.5-5mmH)   |

| Amigo™ Optional Accessories                  |                          |           |
|--|--------------------------|-----------|
|  | Ordering Number          | Item Code |
| Skiving Tool                                 | RTBS Rough Top Skiver    | 03239     |
| Replacement Blades for Amigo                 | AMIGO-1000-BLADES-5      | 08587     |
| High – Low Temp Friction Tape for Flat Belts | AMIGO-FRICTIONTAPE-33X25 | 08604     |

236 Albert Amon Rd • Meadowdale Ext. 7 • Germiston 1614 • South Africa  
Tel: +27-11-608-4180 • Fax: +27-11-454-5821 • E-mail: flexco@flexco.co.za

Visit [www.flexco.com](http://www.flexco.com) for other Flexco locations and products.

©2022 Flexible Steel Lacing Company. Novitool® is a registered trademark.  
Intralox® and ThermoDrive® are registered trademarks of Laitram L.L.C. 05-12-22. For reorder: W1298

| Amigo™ 1000 Belt Template Ordering Information* |                        |                         |                                    |  |
|---|------------------------|-------------------------|------------------------------------|--|
| Item Code                                       | Ordering Number        | Belt Manufacturer       | Belt Style                         | Belt Type  |
| Templates                                       |                        |                         |                                    |  |
| 08592   | AMIGO-1000-TMPLT-08592 | Ammeraal Beltech        | Center Bar                         |  |
|   |                        | Intralox®               | ThermoDrive®                       | 8140 Dual Lug  |
|   |                        | Volta                   | SuperDrive™                        | FMW & FMB<br>FHW & FHB   |
| 08593   | AMIGO-1000-TMPLT-08593 | Intralox®               | ThermoDrive®                       | 8050<br>8026   |
|   |                        | Mafdel                  | DEL/DRIVE                          | DD25   |
| 08594   | AMIGO-1000-TMPLT-08594 | Habasit                 | Cleandrive™                        | CD.M50.S-UA.CB<br>CD.M50.S-UA.WB<br>CD.M25.S-UA.CB<br>CD.M25.S-UA.WB |
| 08595   | AMIGO-1000-TMPLT-08595 |                         |                                    | Flat   |
| 08596   | AMIGO-1000-TMPLT-08596 | Forbo                   | Fullseal                           | PD1 U30 & PD2 U34  |
|   |                        | Gates® TPU              | PosiClean®                         | PC10<br>PC20   |
|   |                        | UBR                     | 1" & 2" Purclean                   | PS2 & PB3  |
| 08597   | AMIGO-1000-TMPLT-08597 | Beltservice Corporation | ProClean Center Drive Lug          | PCCDB<br>PCCD-MD   |
|   |                        | Daisler®                | REOClean®                          | AT40   |
|   |                        | Forbo                   | Fullseal                           | CD40- U34  |
|   |                        | Gates® TPU              | CenterClean®                       | CC40   |
|   |                        | UBR                     | Center Drive PurClean              | CD3BLSS  |
|   |                        | Yongli Belting          | HygienePro™                        | U400   |
| 08603   | AMIGO-1000-TMPLT-08603 | Ammeraal                | Aeon                               | Aeon-50  |
| 08710   | AMIGO-1000-TMPLT-08710 | Cog-veyor Systems Inc.  | Cog-veyor                          | UBM<br>UWM<br>PBH<br>PWH   |
| 08739   | AMIGO-1000-TMPLT-08739 | Beltservice Corporation | Magnethane™                        | PD1  |
|   |                        | Yongli Belting          | HygienePro™                        | U300   |
| 08741   | AMIGO-1000-TMPLT-08741 |                         |                                    | Flat w/Spikes  |
| 08776   | AMIGO-1000-TMPLT-08776 | Gates® TPU              | PosiLace™                          | PC20<br>CC40<br>FC12   |
|   |                        | UBR                     | Hinge Lace                         | N/A  |
| 08788   | AMIGO-1000-TMPLT-08788 | Ammeraal Beltech        | Full Bar                           |  |
|   |                        | Beltservice Corporation | ProClean 1" & 2" Pitch Drive Bar   | PCPD2B<br>PCPD1B-MD  |
|   |                        | Daisler®                | REOClean®                          | T25<br>REO-T50 DB & SB & W   |
|   |                        | UBR                     | 1" & 2" Purclean                   | PS2 & PB3  |
|   |                        |                         | DualDrive™                         | FMW & FMB<br>FHW & FHB   |
|   |                        | Volta                   | Mini DualDrive™                    | FMB<br>FHB   |
|   |                        |                         | Mini SuperDrive™                   | FMB<br>FHB   |
| 08847   | AMIGO-1000-TMPLT-08847 | Volta                   | Hinge Splice                       | M (2.5-5mmH)   |
| 08849   | AMIGO-1000-TMPLT-08849 | Ammeraal Beltech        | Soliflex PRO/<br>Soliflex PRO mini | Soliflex TPU<br>Soliflex TPE   |
| 08855   | AMIGO-1000-TMPLT-08855 | Mafdel                  | POSITIVEBELT                       | PQ2-L  |
| 08856   | AMIGO-1000-TMPLT-08856 | Mafdel                  | DEL/DRIVE                          | DD50   |

