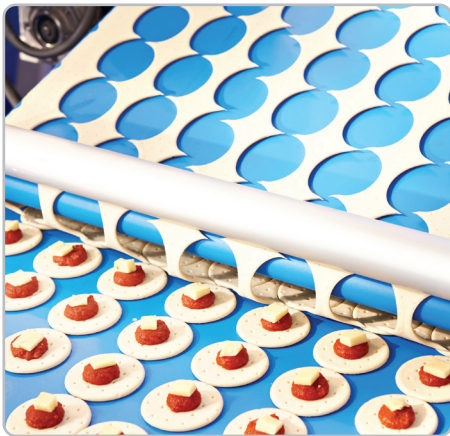
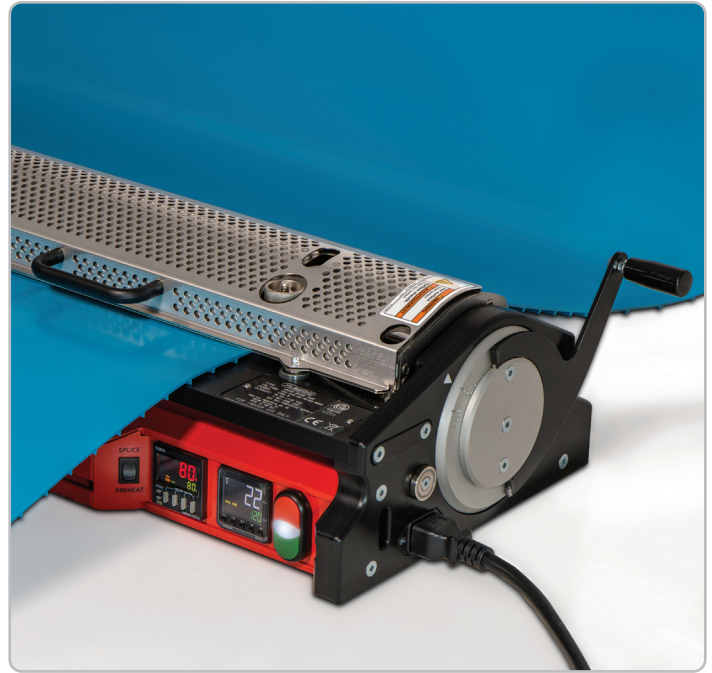


NOVITOO[®] AMIGO[™] Splice Press for Homogeneous Belts

Engineered for Precision Belt Splicing

Splices in homogeneous belting must ensure tight pitch tolerance and be free from pinhole air pockets. With that in mind, everything about the Amigo[™] 625 and 1000 has been designed to do just that. And in typical Novitool[®] tradition, it was made to do it with ease, safety, and speed.

Custom templates are available to secure the belt when cutting and welding the belt ends to ensure accurate pitch control. Preheat mode dries belt ends of moisture to minimize pinholes. The Amigo Splice Press features a transport case for easy storage and transportation, making it ideal for in-shop or on-site splicing.



Features and Benefits:

- Splice time, including the time to heat the press and splice the belt, is **approximately one minute**.
- Pre-heat function dries moisture out of belt ends for **improved splice quality**, free of pinholes where bacteria can grow.
- **Unique heating element** brings the belt ends to the desired molten state without disrupting the material.
- Exclusive, **built-in safety features** like the integrated belt cutter and shielded heating element eliminates the need for utility knives and protects operators from the heat source.

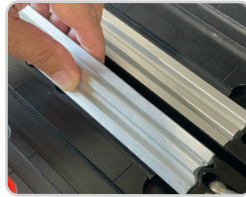
Market Applications

- Proteins
- Baking
- Snack
- Fruit and Vegetable

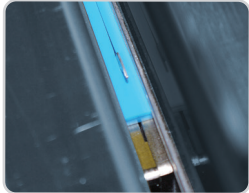
Patents: www.flexco.com/patents

NOVITool® AMIGO™ Splice Press for Homogeneous Belts

Amigo™ 625



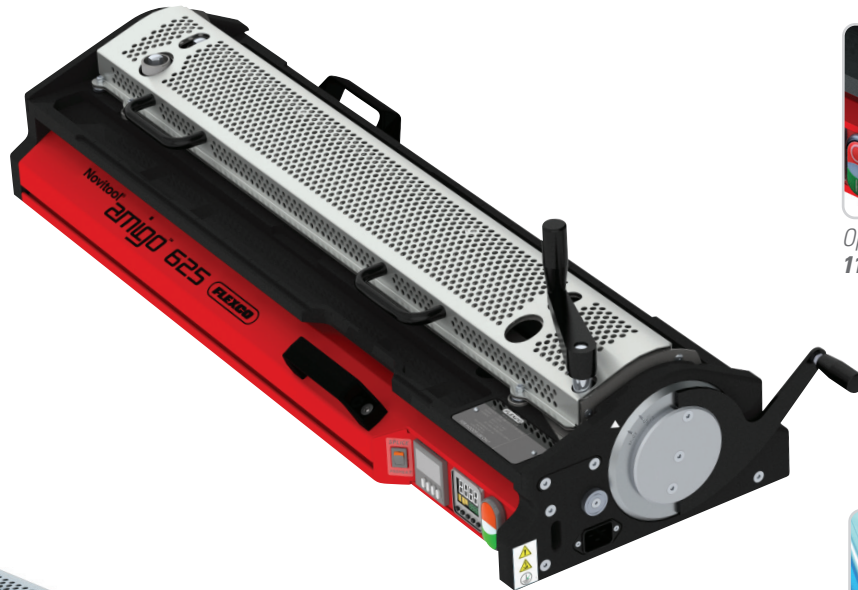
Interchangeable Splice Templates for precise pitch splicing of belts from various belt manufacturers



Integrated Belt Cutter maintains accurate pitch in a single pass



Operates on **Single Phase 115V or 230V**



Amigo™ 1000



Contactless Heating provides for a controlled amount of clash without actual contact with the heat source



Digital Time Control with quick, simple splice settings; the **Pre-Heat Setting** can be used to remove moisture and avoid pinholes





The **Return Side splicing kit** includes components to enable splicing with the Amigo on the **return side** of the conveyor.



Custom Transport Case for easy storage and transportation

NOVITOOL® AMIGO™ Splice Press for Homogeneous Belts

Amigo™ Press and Cable Ordering Information			
	Ordering Number	Item Code	
Press			
24.5" (625mm)	AMIGO-625-SPLICEPRESS	09726	
42" (1065mm)	AMIGO-1000-SPLICEPRESS	08545	
Cables			
115 volt; single phase; 15 amp	AMIGO-1000-CABLE-1X115-IEC520	08585	
230 volt; single phase; 7.5 amp	AMIGO-1000-CABLE-1X230-IECL620	08586	

NOTE: Press, cable, and templates are all purchased separately.

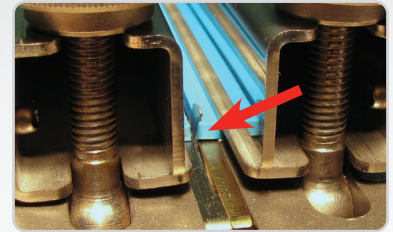
Amigo™ 625 Dimension Information		
	Dimensions	Weight
Machine	39.4" (1000mm) x 12.4" (315mm) x 6.7" (170mm)	54 lb (24.5 kg)
Transport Case (includes additional templates and support equipment)	47.7" (1210mm) x 19.3" (490mm) x 15.2" (385mm)	68 lb (31 kg)
Total Weight		122 lb (55.5 kg)

NOTE: The Amigo™ 625 is compact enough for a single operator to transport and operate.

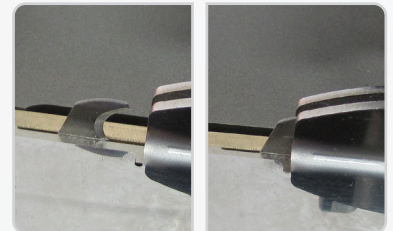
Amigo™ 625 Belt Template Ordering Information*						
Item Code	Ordering Number	Belt Manufacturer	Belt Style	Belt Type		
Templates						
09731	AMIGO-625-TMPLT-08592	Ammeraal Beltech	Soliflex CB	TPU		
		Intralox®	ThermoDrive®	8140 Single Lug		
		Volta	SuperDrive™	FMW & FMB FHW & FHB		
09730	AMIGO-625-TMPLT-08593	Intralox®	ThermoDrive®	8050 8026		
		Mafdel	DEL/DRIVE	DD25		
				CD.M50.S-UA.CB CD.M50.S-UA.WB CD.M25.S-UA.CB CD.M25.S-UA.WB		
09732	AMIGO-625-TMPLT-08594	Habasit	Cleandrive™	Flat		
09733	AMIGO-625-TMPLT-08595			EC-P1N/EC-P2		
09734	AMIGO-625-TMPLT-08596	Elatech®	ELAClean®	PC10 PC20		
		Gates® TPU	PosiClean®	PS2 & PB3		
09735	AMIGO-625-TMPLT-08597	UBR	1" Purclean	PCCDB PCCD-MD		
		Beltservice Corporation	ProClean Center Drive Lug	EC-C4		
		Elatech®	ELAClean®	CD40-1R U30		
		Gates® TPU	CenterClean®	CC40		
		Habasit	CD M40	L-UA WB		
		UBR	Center Drive Purclean	CD3BLSS		
		Yongli Belting	HygienePro™	U400		
09736	AMIGO-625-TMPLT-08710			UBM UWM PBH PWH		
		Cog-veyor Systems Inc.	Cog-veyor	PC20 CC40 FC12		
		Gates® TPU	PosiLace™	N/A		
		UBR	Hinge Lace			
09738	AMIGO-625-TMPLT-08788	Ammeraal Beltech	Soliflex FB/mini FB	TPU		
		Beltservice Corporation	ProClean 1" & 2" Pitch Drive Bar	PCPD2B PCPD1B-MD		
		Forbo	Fullsan	PD2 U30		
		INO Belt	REOclean	REO-T50 REO-T25		
		UBR	2" Purclean	PS2 & PB3		
		Volta	DualDrive™	FMW & FMB FHW & FHB		
			Mini DualDrive™	FMB & FHB		
			Mini SuperDrive™	FMB & FHB		
		09739	AMIGO-625-TMPLT-08847	Volta	Hinge Splice	M (2.5-5mmH)
		105844	AMIGO-625-TMPLT-105844	Yongli	HygienePro™	U200
109226	AMIGO-625-TMPLT-109228	INO Belt	REOclean	AT40		
109506*	AMIGO-625-TMPLT-109508	INO Belt	REOclean	M25DB		
109627*	AMIGO-625-TMPLT-109629	INO Belt	REOclean	M5DB		

*Must be spliced using the Return Side Kit 107323.

Safety Features of the Amigo™ 625 & 1000



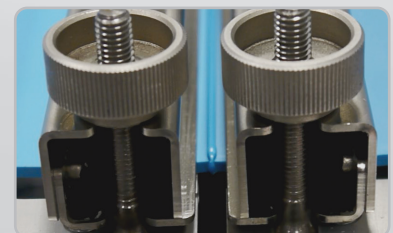
Integrated Cutter: Operator is protected from blade during single pass cutting operation.



Cutter Storage Position: Cutter must be in storage position for splicing function to operate.



Shielded Heat Zone: Guard must be closed for heat emitter to function. Operator is protected from heat source during splicing.



Cool Zone: Heater stows and cools inside unit as belt ends are butt-welded together.



NOVITool® AMIGO™ Splice Press for Homogeneous Belts

Amigo™ 1000 Dimension Information

	Dimensions	Weight
Machine	56.1" (1425mm) × 12.4" (315mm) × 6.7" (170mm)	85 lb (38.5 kg)
Transport Case (includes additional templates and support equipment)	66.9" (1700mm) × 19.3" (490mm) × 15.2" (385mm)	80 lb (36.3 kg)
Total Weight		165 lb (74.8 kg)

Amigo™ Optional Accessories

	Ordering Number	Item Code
Skiving Tool	RTBS Rough Top Skiver	03239
Replacement Blades for Amigo	AMIGO-1000-BLADES-5	08587
High – Low Temp Friction Tape for Flat Belts	AMIGO-FRICTIONTAPE-33X25	08604

Amigo™ 1000 Belt Template Ordering Information*

Item Code	Ordering Number	Belt Manufacturer	Belt Style	Belt Type
Templates				
08592	AMIGO-1000-TMPLT-08592	Ammeraal Beltech	Soliflex CB	TPU
		Intralox®	ThermoDrive®	8140 Single/Dual Lug
		Volta	SuperDrive™	FMW & FMB FHW & FHB
08593	AMIGO-1000-TMPLT-08593	Intralox®	ThermoDrive®	8050 8026
		Mafdel	DEL/DRIVE	DD25
08594	AMIGO-1000-TMPLT-08594	Habasit	Cleandrive™	CD.M50.S-UA.CB CD.M50.S-UA.WB CD.M25.S-UA.CB CD.M25.S-UA.WB
08595	AMIGO-1000-TMPLT-08595			Flat
08596	AMIGO-1000-TMPLT-08596	Elatech®	ELAClean®	EC-P1N/EC-P2
		Gates® TPU	PosiClean®	PC10 PC20
		UBR	1" Purclean	PS2 & PB3
08597	AMIGO-1000-TMPLT-08597	Beltservice Corporation	ProClean Center Drive Lug	PCCDB PCCD-MD
		Elatech®	ELAClean®	EC-C4
		Forbo	Fullsan	CD40- 1R/2R U30
		Gates® TPU	CenterClean®	CC40
		Habasit	CD M40	L-UA WB
		UBR	Center Drive PurClean	CD3BLSS
08603	AMIGO-1000-TMPLT-08603	Yongli Belting	HygienePro™	U400
08710	AMIGO-1000-TMPLT-08710	Ammeraal	Aeon	Aeon-50 UBM
		Cog-veyor Systems Inc.	Cog-veyor	UWM PBH PWH
		Beltservice Corporation	Magnethane™	PD1
		Yongli Belting	HygienePro™	U300

Amigo™ Return Side Kits

Ordering Number	Item Code	Maximum Belt Width
AMIGO-1000-RETURN-SIDE-KIT	107322	41.18" (1046mm)
AMIGO-625-RETURN-SIDE-KIT	107323	24.17" (614mm)
AMIGO-RS-GUARD-ADAPTER-KIT*	107321	

*Contact Flexco Customer Service with your Amigo™ Serial Number to determine if this kit is required. Amigo™ Return Side is not compatible with the following belt templates: 08710, 08776, 08847, 09736, 09737, 09739.

Amigo™ 1000 Belt Template Ordering Information*

Item Code	Ordering Number	Belt Manufacturer	Belt Style	Belt Type
Templates				
08741	AMIGO-1000-TMPLT-08741			Flat w/Spikes
08776	AMIGO-1000-TMPLT-08776	Gates® TPU	PosiLace™	PC20 CC40 FC12
		UBR	Hinge Lace	N/A
08788	AMIGO-1000-TMPLT-08788	Ammeraal Beltech	Soliflex FB/mini FB	TPU
		Beltservice Corporation	ProClean 1" & 2" Pitch Drive Bar	PCPD2B PCPD1B-MD
		Forbo	Fullsan	PD2 U30
		INO Belt	REOcLean	REO-T50 REO-T25
		UBR	2" Purclean	PS2 & PB3
		Volta	DualDrive™	FMW & FMB FHW & FHB
			Mini DualDrive™	FMB FHB
			Mini SuperDrive™	FMB FHB
		08847	AMIGO-1000-TMPLT-08847	Volta
08849	AMIGO-1000-TMPLT-08849	Ammeraal Beltech	Soliflex PRO/Soliflex PRO mini	Soliflex TPU Soliflex TPE
08855**	AMIGO-1000-TMPLT-08855	Mafdel	POSITIVEBELT	P02-L
08856	AMIGO-1000-TMPLT-08856	Mafdel	DEL/DRIVE	DD50
105846	AMIGO-1000-TMPLT-105846	Yongli	HygienePro™	U200
109228*	AMIGO-1000-TMPLT-109228	INO Belt	REOcLean	AT40
109508*	AMIGO-1000-TMPLT-109508	INO Belt	REOcLean	M25DB
109629*	AMIGO-1000-TMPLT-109629	INO Belt	REOcLean	M5DB

*Must be spliced using the Return Side Kit 107322. 109228 for belt width 39-1/4" or wider.

**The first three rows of lugs need to be trimmed prior to cutting and splicing this belt.

Visit www.flexco.com for other Flexco locations and products, or to find an authorized distributor.

