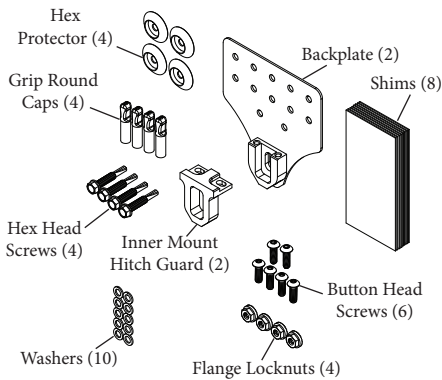


Hitch Guard Wide Flange V4 Bracket (Kit 111565)

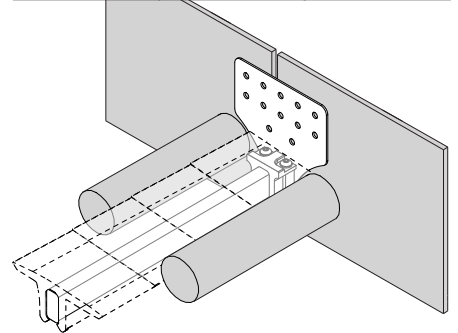
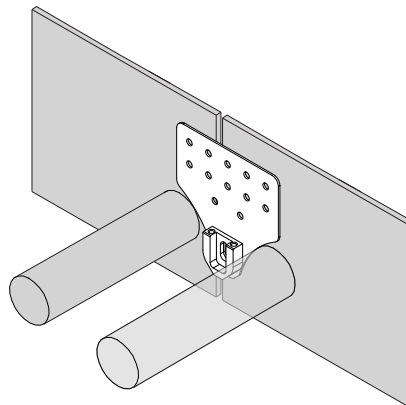
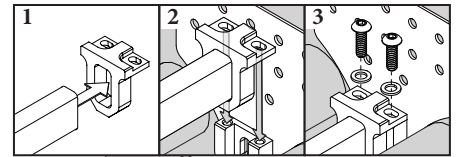
Instructions for Installation

Reference Hitch Guard IOM (X2927 & X3627) for full installation details. This sheet is only to guide the installation of the optional mounting bracket. Kit 111565 contains two wide flange V4 brackets and mounting hardware.

Typical applications include 3" horizontal transfers where a bolted connection is desired or required, and there is little or no access beneath the transfer. This bracket is not recommended for use in typical hitch transfer applications. If needed, refer to the standard Hitch Guard brackets instructions.

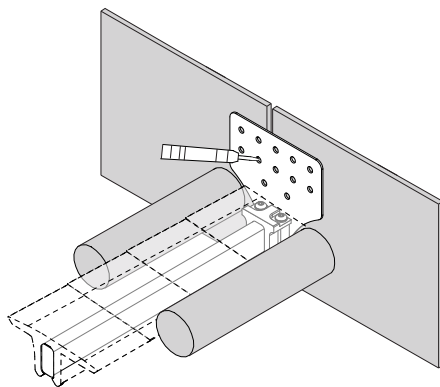


Hitch Guard Wide Flange V4 Bracket (Kit 111565).

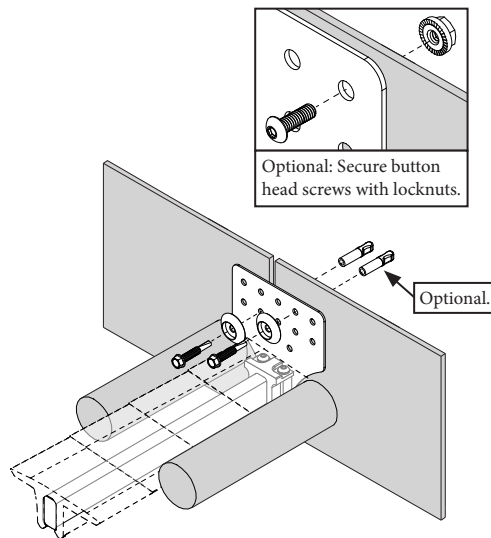


1. Identify horizontal transition and ensure area where the bracket will be installed is clear of obstructions. Measure the gap width and trim the support bar as required, following the procedures in X2927 and X3627.

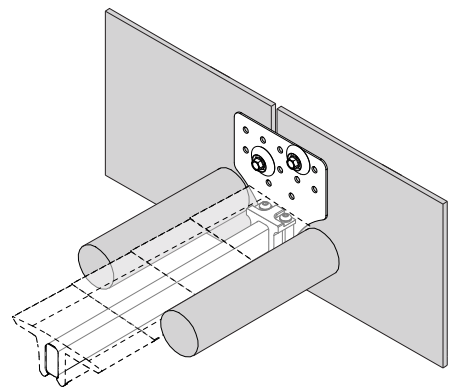
2. Install plastic Hitch Guard segments along the length of the support bar, trimming segments as necessary. Insert each end of the bar into a wide flange V4 bracket. Place the full assembly into the gap, making sure everything is properly aligned between the belts.



3. Identify the bracket holes to be used for mounting and verify that there are no interferences behind the structure. Use a center punch to mark the holes and seat the drill bit.



4. Drill the first hole with a 1/8" (3.2mm) drill bit. Fasten the bracket using at least two self-tapping screws and hex head protector washers. Grip round caps are optional. Repeat for additional holes and opposite bracket.



5. Once at least four fasteners are in place and final clearance between belt and segment is confirmed, tighten all fasteners until the bracket seats tight against the conveyor side wall. Refer to IOMs X2927 and X3627 to finish the installation, including adding shims between backplate and inner mount as required for vertical adjustment.

Visit www.flexco.com for other Flexco locations and products, or to find an authorized distributor.