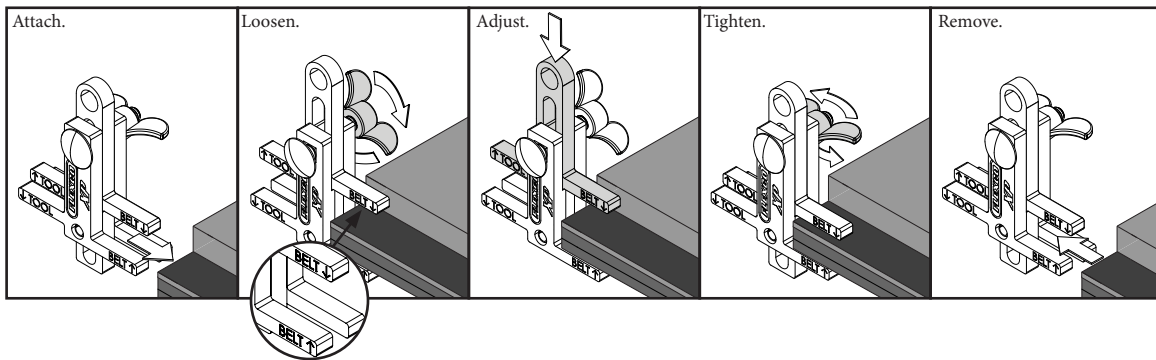


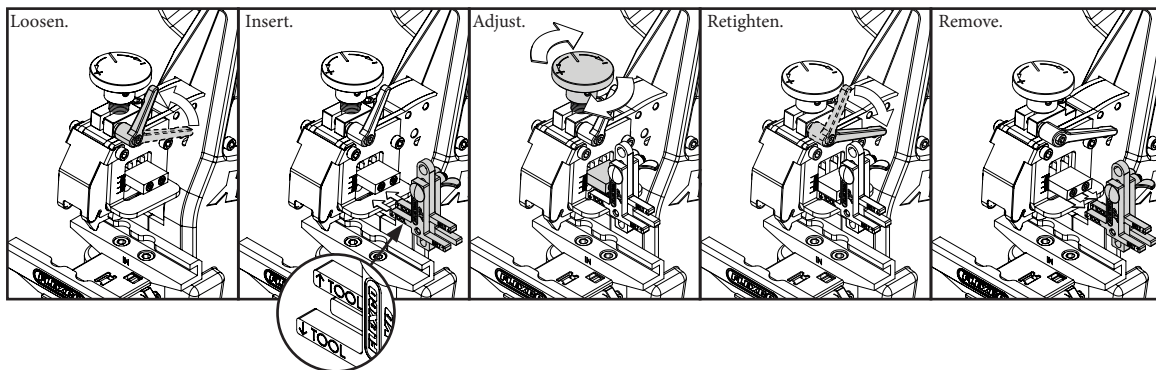
# XP Belt Thickness Gauge



1. Gauge the belt thickness after skive to set applicator tool.



2. Place the gauge into the opening of the XP applicator tool for the corresponding fastener.



Visit [www.flexco.com](http://www.flexco.com) for other Flexco locations and products, or to find an authorized distributor.

©2023 Flexible Steel Lacing Company, 01-03-24, 108433

