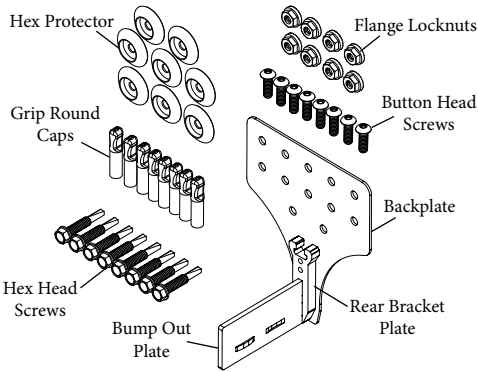


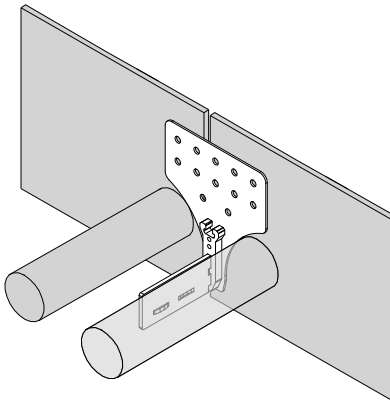
# Narrow Gap Wide Flange Mount Bracket (Kit 105953) Installation Instructions

Reference Narrow Gap Segmented Transfer Plate IOM (X4657) for full installation details. This sheet is only to guide the installation of the optional mounting bracket.

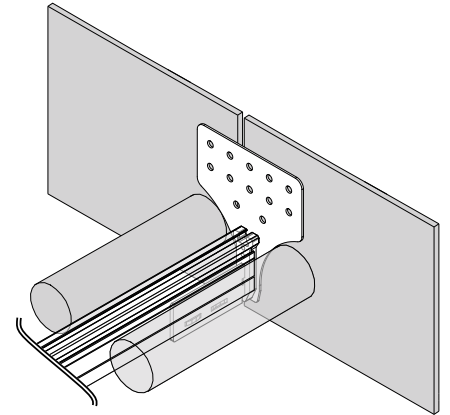
**NOTE:** Kit 105953 is intended for STP installations where the conveyor structure is mounted directly to the floor or has a low-profile structure. Kit 105953 offers the option to install the Narrow Gap STP brackets directly on the side panels above the transfer where there is insufficient space or access below the conveyors to install the standard Narrow Gap STP brackets. Reference Narrow Gap Segmented Transfer Plate IOM X4657 for full installation details. Kit 105953 is recommended for airport operations (baggage handling, check in, X-Ray tunnels) and Logistics applications (parcel, package handling) where a low-profile conveyor is required.



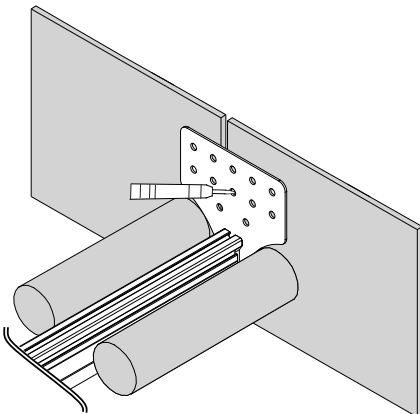
Narrow Gap Wide Flange Mount Bracket (Kit 105953).



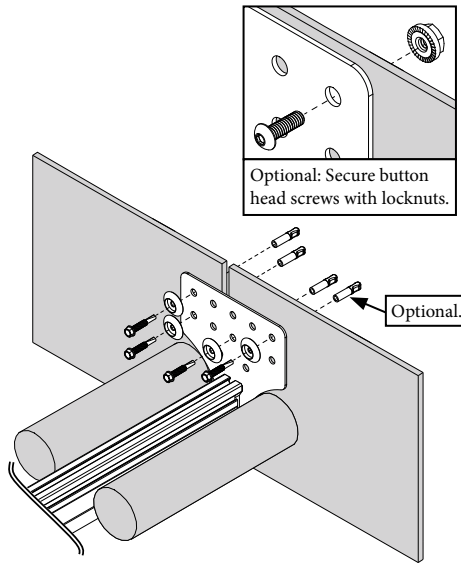
1. Make sure the area where the bracket will be installed is clear of obstructions.



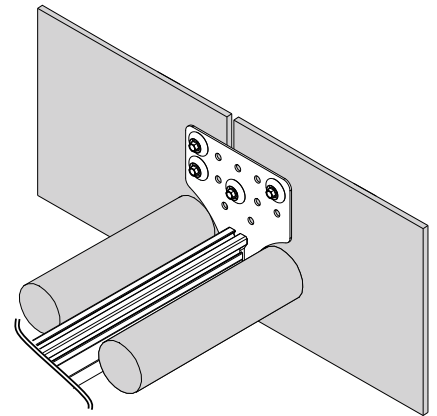
2. Install pairs of plastic segments along the length of the aluminum channel, trimming segments as necessary, and one bracket on each end of the channel. Place the full assembly into the gap, making sure everything is properly aligned between rollers.



3. Identify the bracket holes to be used for mounting and verify that there are no obstructions behind the structure. Use a center punch to mark the holes and seat the drill bit.



4. Drill the first hole with a 1/8" (3.2mm) drill bit. Fasten the bracket using at least 2 self-tapping screws and hex head protector washers. Grip round caps are optional. Repeat for additional holes and opposite bracket.



5. Once at least four fasteners are in place and final clearance between belt and segment is confirmed, tighten all fasteners until the bracket seats tight against the conveyor side wall. Refer to IOM X4657 to finish the installation.