

Product Handbook

EFFECTIVE AUGUST 1, 2024

Flex-Lag[®] Pulley Lagging



10 Solent Circuit, Norwest NSW 2153, Australia

Customer Service

+61 2 8818 2000

Fax

+61 2 8824 6333

www.flexco.com

Table of Contents

Flex-Lag®

| | |
|---|-------|
| Flex-Lag® Rubber Lagging..... | 3 |
| Flex-Lag® Medium Ceramic Lagging..... | 4-5 |
| Flex-Lag® Full Ceramic Lagging..... | 6-7 |
| Flex-Lag® Selection Chart – Ceramic..... | 8 |
| Flex-Lag® Weld-on Rubber Lagging..... | 9 |
| Flex-Lag® Weld-on Full Ceramic Lagging..... | 10 |
| Flex-Lag® Crowned Pulley Lagging..... | 11 |
| Cements and Repair Materials..... | 12-13 |

Information

| | |
|---|--|
| HEAD OFFICE ADDRESS: | Flexco (Aust.) Pty Ltd 10 Solent Circuit Norwest, NSW 2153 |
| OFFICE TELEPHONE: | +61 2 8818 2000 |
| WESTERN AUSTRALIA OFFICE ADDRESS | 8 Potts Road Forrestdale, WA 6112 Phone: 1300 098 435 |
| POSTAL ADDRESS: | P.O. Box 6365 Norwest, NSW 2153 |
| EMAIL: | salesau@flexco.com |
| OFFICE FACSIMILE: | +61 2 8824 6333 |

Flex-Lag® Rubber Lagging

Flex-Lag® Light Duty is supplied in rolls 200 mm wide and 3.3 metres long. Alternative lengths and thicknesses are available upon request.

Flex-Lag® Light Duty Rubber

| PATTERN | THICKNESS | LENGTH | MATERIAL | ORDERING NUMBER | ITEM CODE | WT. KG |
|------------|-----------|--------|----------|-----------------|-----------|--------|
| | mm | m | | | | |
| Light Duty | 7.5 | 3.3 | SBR | 7.5NLD3.3/1 | 71077 | 5.5 |

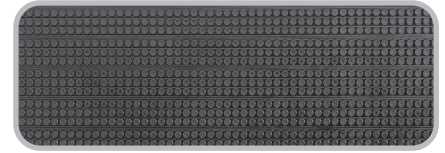
SBR and FRAS Rubber have a hardness of 65–75 durometer.

FRAS Rubber has been approved for use in underground coal mines.

For 25 mm and 30 mm thicknesses or special lengths, contact Flexco Customer Service Department for price and delivery details.

Tolerances - Standard thicknesses plus 0.25 mm minus 0.75 mm
- Width – plus or minus 0.5 mm

Light Duty Lagging

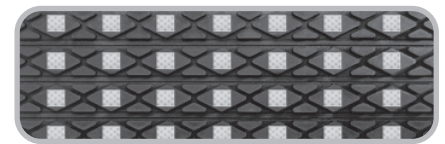


Flex-Lag® Roll Lagging – SBR Rubber

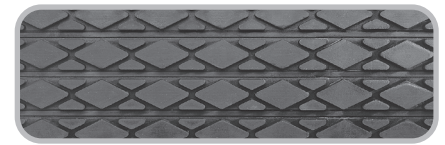
| PATTERN | THICKNESS | LENGTH | ORDERING NUMBER | ITEM CODE | WT. KG |
|-----------------|-----------|--------|------------------|-----------|--------|
| | mm | m | | | |
| Diamond | 10 | 6.5 | 10ND6.5/21 | 71002 | 12.0 |
| Diamond | 10 | 78* | 10ND-78MTR ROLL | 66158 | 144.0 |
| Diamond | 12 | 6.5 | 12ND6.5/21 | 71004 | 15.0 |
| Diamond | 12 | 65* | 12ND-65MTR ROLL | 66153 | 150.0 |
| Diamond | 15 | 6.5 | 15ND6.5/21 | 71006 | 19.5 |
| Diamond | 20 | 6.5 | 20ND6.5/21 | 71008 | 24.0 |
| Diamond | 25 | 6.5 | 25ND6.5/21 | 71152 | 31.5 |
| Plain | 10 | 6.5 | 10NP6.5/21 | 71010 | 14.0 |
| Plain | 12 | 6.5 | 12NP6.5/21 | 71012 | 17.0 |
| Plain | 15 | 6.5 | 15NP6.5/21 | 71017 | 22.0 |
| Plain | 20 | 6.5 | 20NP6.5/21 | 71021 | 26.0 |
| Plain | 25 | 6.5 | 25NP6.5/21 | 71163 | 32.5 |
| Diamond Ceramic | 12 | 6.5 | 12NDC6.5/21 | 71155 | 15.0 |
| Diamond Ceramic | 12 | 65* | 12NDC-65MTR ROLL | 66155 | 150.0 |

* Lead time for non-stocked items: 5 days; 65 m rolls - 15 days

Diamond Ceramic Lagging



Diamond Grooved Lagging



Plain Grooved Lagging





Flex-Lag® Roll Lagging – FRAS SBR Rubber

| PATTERN | THICKNESS | LENGTH | ORDERING NUMBER | ITEM CODE | WT. |
|--------------------------|-----------|--------|-------------------|-----------|-------|
| | mm | m | | | |
| Diamond | 10 | 6.5 | 10FRD6.5/21 | 71014 | 14.0 |
| Diamond | 10 | 78* | 10FRD-78MTR ROLL | 66159 | 168.0 |
| Diamond | 12 | 6.5 | 12FRD6.5/21 | 71016 | 17.5 |
| Diamond | 12 | 65* | 12FRD-65MTR ROLL | 66154 | 175.0 |
| Diamond | 15 | 6.5 | 15FRD6.5/21 | 71018 | 25.0 |
| Diamond | 20 | 6.5 | 20FRD6.5/21 | 71019 | 27.0 |
| Plain | 10 | 6.5 | 10FRP6.5/21 | 71020 | 16.0 |
| Plain | 12 | 6.5 | 12FRP6.5/21 | 71022 | 20.0 |
| Plain | 15 | 6.5 | 15FRP6.5/21 | 71015 | 25.0 |
| Plain | 20 | 6.5 | 20FRP6.5/21 | 72129 | 33.0 |
| Diamond Ceramic | 12 | 6.5 | 12FRDC6.5/21 | 71159 | 16.0 |
| Diamond Ceramic - Smooth | 12 | 65* | 12FRDC-65MTR | 107803 | 185.0 |
| Diamond Ceramic | 12 | 65* | 12FRDC-65MTR ROLL | 66246 | 160.0 |

FRAS (Fire Resistant Anti Static). FRAS Lagging complies with the requirements of MDG3608.

* Lead time for non-stocked items: 5 days; 65 m rolls - 15 days

 Stock Items (non-shaded) carried in factory inventory.
 Made to Order Items (shaded). Please contact Flexco for dispatch options and lead times.

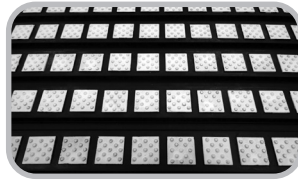
Flex-Lag® Medium Ceramic Lagging

No wasted ceramic with easy-to-specify dimensions by using pulley or belt width.

Constructed from individual ceramic tiles moulded into high-durometer rubber for superior abrasion resistance.

Horizontal grooves trap and deflect water.

Moulded ceramic buttons grip the belt's underside for positive traction and no slippage.



Specifications:

| | |
|---|---|
| Temperature Rating -15° to 85°C | Ceramic Compound Aluminum Oxide (Al ₂ O ₃) |
| Rubber Compound SBR (Styrene-Butadiene-Rubber) | Ceramic Hardness 83 HRA Rockwell Hardness Scale A |
| Rubber Hardness 68 ± 3 Shore A | |

Flex-Lag® Medium Ceramic Lagging – SBR 12 mm Rubber

| THICKNESS | BELT WIDTH | CERAMIC LENGTH | STRIP LENGTH | DIMPLED TILE | | | SMOOTH TILE | | |
|-----------|------------|----------------|--------------|------------------|-----------|--------|-----------------------|-----------|--------|
| | | | | ORDERING NUMBER | ITEM CODE | WT. KG | ORDERING NUMBER | ITEM CODE | WT. KG |
| *12 | 450 | 474 | 880 | CLMN450/18-12MM | 102063 | 2.40 | CLMN450/18-12 SMOOTH | 102066 | 2.40 |
| | 600 | 626 | 1032 | CLMN600/24-12MM | 102064 | 2.80 | CLMN600/24-12 SMOOTH | 102067 | 2.80 |
| | 750 | 779 | 1185 | CLMN750/30-12MM | 64285 | 3.20 | CLMN750/30-12 SMOOTH | 102068 | 3.20 |
| | 900 | 931 | 1337 | CLMN900/36-12MM | 66016 | 3.60 | CLMN900/36-12 SMOOTH | 69328 | 3.60 |
| | 1050 | 1082 | 1488 | CLMN1050/42-12MM | 68150 | 4.00 | CLMN1050-12 SMOOTH | 102069 | 4.00 |
| | 1200 | 1235 | 1641 | CLMN1200/48-12MM | 69326 | 4.80 | CLMN1200/48-12 SMOOTH | 66253 | 4.80 |
| | 1350 | 1388 | 1794 | CLMN1350/54-12MM | 68805 | 5.60 | CLMN1350/54-12 SMOOTH | 102070 | 5.60 |
| | 1500 | 1541 | 1947 | CLMN1500/60-12MM | 69321 | 6.00 | CLMN1500/60-12 SMOOTH | 102071 | 6.00 |
| | 1800 | 1842 | 2248 | CLMN1800/72-12MM | 69318 | 6.80 | CLMN1800/72-12 SMOOTH | 102072 | 6.80 |
| | 2100 | 2155 | 2561 | CLMN2100/84-12MM | 102065 | 7.20 | CLMN2100/84-12 SMOOTH | 102073 | 7.20 |



* Lead time for non-stocked items: 10 days

Flex-Lag® Medium Ceramic Lagging – FRAS SBR 12 mm Rubber

| THICKNESS | BELT WIDTH | CERAMIC LENGTH | STRIP LENGTH | DIMPLED TILE | | | SMOOTH TILE | | |
|-----------|------------|----------------|--------------|-----------------|-----------|--------|------------------|-----------|--------|
| | | | | ORDERING NUMBER | ITEM CODE | WT. KG | ORDERING NUMBER | ITEM CODE | WT. KG |
| *12 | 450 | 474 | 880 | CLMFR450/18-12 | 102074 | 2.80 | CLMFR450/18-12s | 102079 | 2.80 |
| | 600 | 626 | 1032 | CLMFR600/24-12 | 102075 | 3.20 | CLMFR600/24-12s | 102080 | 3.20 |
| | 750 | 779 | 1185 | CLMFR750/30-12 | 102076 | 3.60 | CLMFR750/30-12s | 102081 | 3.60 |
| | 900 | 931 | 1337 | CLMFR900/36-12 | 69491 | 4.00 | CLMFR900/36-12s | 102082 | 4.00 |
| | 1050 | 1082 | 1488 | CLMFR1050/42-12 | 102077 | 4.80 | CLMFR1050/42-12s | 102083 | 4.80 |
| | 1200 | 1235 | 1641 | CLMFR1200/48-12 | 65017 | 5.60 | CLMFR1200/48-12s | 102084 | 5.60 |
| | 1350 | 1388 | 1794 | CLMFR1350/54-12 | 64994 | 6.40 | CLMFR1350/54-12s | 102085 | 6.40 |
| | 1500 | 1541 | 1947 | CLMFR1500/60-12 | 65526 | 6.80 | CLMFR1500/60-12s | 102086 | 6.80 |
| | 1800 | 1842 | 2248 | CLMFR1800/72-12 | 64663 | 7.60 | CLMFR1800/72-12s | 102087 | 7.60 |
| | 2100 | 2155 | 2561 | CLMFR2100/84-12 | 102078 | 8.40 | CLMFR2100/84-12s | 102088 | 8.40 |

FRAS (Fire Resistant Anti Static). FRAS Lagging complies with the requirements of MDG3608.

* Lead time for non-stocked items: 10 days

 Stock Items (non-shaded) carried in factory inventory.
 Made to Order Items (shaded). Please contact Flexco for dispatch options and lead times.

Flex-Lag® Medium Ceramic Lagging

Flex-Lag® Medium Ceramic Lagging – SBR 15 mm Rubber

| THICKNESS | BELT WIDTH | CERAMIC LENGTH | STRIP LENGTH | DIMPLED TILE | | | SMOOTH TILE | | |
|-----------|------------|----------------|--------------|-----------------|-----------|--------|-----------------|-----------|--------|
| | | | | ORDERING NUMBER | ITEM CODE | WT. KG | ORDERING NUMBER | ITEM CODE | WT. KG |
| *15 | 450 | 474 | 880 | CLMN450/18-15 | 61294 | 3.0 | CLMN450/18-15S | 62052 | 3.0 |
| | 600 | 626 | 1032 | CLMN600/24-15 | 61295 | 3.5 | CLMN600/24-15S | 62053 | 3.5 |
| | 750 | 779 | 1185 | CLMN750/30-15 | 61296 | 4.0 | CLMN750/30-15S | 62054 | 4.0 |
| | 900 | 931 | 1337 | CLMN900/36-15 | 61297 | 4.5 | CLMN900/36-15S | 62055 | 4.5 |
| | 1050 | 1082 | 1488 | CLMN1050/42-15 | 61298 | 5.0 | CLMN1050/42-15S | 62056 | 5.0 |
| | 1200 | 1235 | 1641 | CLMN1200/48-15 | 61299 | 6.0 | CLMN1200/48-15S | 62057 | 6.0 |
| | 1350 | 1388 | 1794 | CLMN1350/54-15 | 61300 | 7.0 | CLMN1350/54-15S | 62058 | 7.0 |
| | 1500 | 1541 | 1947 | CLMN1500/60-15 | 61301 | 7.5 | CLMN1500/60-15S | 62059 | 7.5 |
| | 1800 | 1842 | 2248 | CLMN1800/72-15 | 61302 | 8.5 | CLMN1800/72-15S | 62060 | 8.5 |
| | 2100 | 2155 | 2561 | CLMN2100/84-15 | 61303 | 9.0 | CLMN2100/84-15S | 62061 | 9.0 |

* Lead time for non-stocked items: 10 days

Flex-Lag® Medium Ceramic Lagging – FRAS SBR 15 mm Rubber

| THICKNESS | BELT WIDTH | CERAMIC LENGTH | STRIP LENGTH | DIMPLED TILE | | | SMOOTH TILE | | |
|-----------|------------|----------------|--------------|-----------------|-----------|--------|------------------|-----------|--------|
| | | | | ORDERING NUMBER | ITEM CODE | WT. KG | ORDERING NUMBER | ITEM CODE | WT. KG |
| *15 | 450 | 474 | 880 | CLMFR450/18-15 | 61308 | 3.5 | CLMFR450/18-15S | 62063 | 3.5 |
| | 600 | 626 | 1032 | CLMFR600/24-15 | 61309 | 4.0 | CLMFR600/24-15S | 62064 | 4.0 |
| | 750 | 779 | 1185 | CLMFR750/30-15 | 61310 | 4.5 | CLMFR750/30-15S | 62065 | 4.5 |
| | 900 | 931 | 1337 | CLMFR900/36-15 | 61311 | 5.0 | CLMFR900/36-15S | 62066 | 5.0 |
| | 1050 | 1082 | 1488 | CLMFR1050/42-15 | 61312 | 6.0 | CLMFR1050/42-15S | 62067 | 6.0 |
| | 1200 | 1235 | 1641 | CLMFR1200/48-15 | 61313 | 7.0 | CLMFR1200/48-15S | 62068 | 7.0 |
| | 1350 | 1388 | 1794 | CLMFR1350/54-15 | 61314 | 8.0 | CLMFR1350/54-15S | 62069 | 8.0 |
| | 1500 | 1541 | 1947 | CLMFR1500/60-15 | 61315 | 8.5 | CLMFR1500/60-15S | 62070 | 8.5 |
| | 1800 | 1842 | 2248 | CLMFR1800/72-15 | 61316 | 9.5 | CLMFR1800/72-15S | 62071 | 9.5 |
| | 2100 | 2155 | 2561 | CLMFR2100/84-15 | 61317 | 10.5 | CLMFR2100/84-15S | 62072 | 10.5 |

FRAS (Fire Resistant Anti Static). FRAS Lagging complies with the requirements of MDG3608.

* Lead time for non-stocked items: 10 days

Flex-Lag® Medium Ceramic Lagging, 15 mm – 40 metre rolls

| DESCRIPTION | THICKNESS | LENGTH | ORDERING NUMBER | ITEM CODE |
|-------------|-----------|--------|----------------------------------|-----------|
| | mm | m | | |
| SBR Rubber | 15 | 40 | CLMN-40MTR MEDIUM FLEX-LAG | 63765 |
| FRAS | 15 | 40 | CLMFR-40MTR MEDIUM FRAS FLEX-LAG | 63788 |

* Lead time for non-stocked items: 15 days

Stock Items (non-shaded) carried in factory inventory.
 Made to Order Items (shaded). Please contact Flexco for dispatch options and lead times.

Flex-Lag® Full Ceramic Lagging

Flex-Lag® Ceramic Pulley Lagging consists of dimple ceramic tiles moulded into SBR rubber and is 12 mm thick.

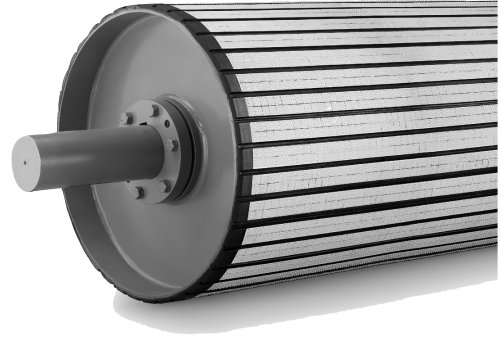
FRAS Ceramic Lagging has been approved for use in underground coal mines.

Flex-Lag Ceramic is also available in 15 mm, 20 mm, and 30 mm (maximum) thicknesses. For pricing and delivery times, please contact Flexco.

Smooth ceramic available on demand. No extra cost.

Thickness tolerance 0.25 mm plus and 0.75 mm minus.

Width – plus or minus 0.5 mm



Flex-Lag® Full Ceramic Lagging - SBR Rubber

| THICKNESS | BELT WIDTH | CERAMIC LENGTH | STRIP LENGTH | DIMPLED TILE | | | SMOOTH TILE | | |
|-----------|------------|----------------|--------------|-----------------|-----------|--------|------------------|-----------|--------|
| | | | | ORDERING NUMBER | ITEM CODE | WT. KG | ORDERING NUMBER | ITEM CODE | WT. KG |
| 12 | 450 | 460 | 860 | CLN460/18.4-12 | 71111 | 3.5 | CLN460/18.4-12S | 79383 | 3.5 |
| 12 | 600 | 600 | 1000 | CLN600/24-12 | 71112 | 4.0 | CLN600/24-12S | 79384 | 4.0 |
| 12 | 750 | 760 | 1160 | CLN760/30.4-12 | 71113 | 4.3 | CLN760/30.4-12S | 79385 | 4.3 |
| 12 | 800 | 800 | 1200 | CLN800/32-12 | 71114 | 4.5 | CLN800/32-12S | 79386 | 4.5 |
| 12 | 900 | 900 | 1300 | CLN900/36-12 | 71115 | 5.0 | CLN900/36-12S | 79387 | 5.0 |
| 12 | 1050 | 1060 | 1500 | CLN1060/42.4-12 | 71116 | 5.5 | CLN1060/42.4-12S | 79388 | 5.5 |
| 12 | 1200 | 1200 | 1600 | CLN1200/48-12 | 71039 | 6.0 | CLN1200/48-12S | 79389 | 6.0 |
| 12 | 1350 | 1360 | 1800 | CLN1360/54.4-12 | 71126 | 7.0 | CLN1360/54.4-12S | 79390 | 7.0 |
| 12 | 1400 | 1400 | 1800 | CLN1400/56-12 | 71040 | 7.2 | CLN1400/56-12S | 79391 | 7.2 |
| 12 | 1500 | 1520 | 2000 | CLN1520/60.8-12 | 71127 | 7.5 | CLN1520/60.8-12S | 79392 | 7.5 |
| 12 | 1600 | 1600 | 2000 | CLN1600/64-12 | 71117 | 8.0 | CLN1600/64-12S | 79393 | 8.0 |
| 12 | 1700 | 1700 | 2100 | CLN1700/68-12 | 71041 | 8.3 | CLN1700/68-12S | 79394 | 8.3 |
| 12 | 1800 | 1800 | 2300 | CLN1800/72-12 | 71042 | 8.5 | CLN1800/72-12S | 79395 | 8.5 |
| 12 | 1900 | 1900 | 2400 | CLN1900/76-12 | 71043 | 9.0 | CLN1900/76-12S | 79396 | 9.0 |
| 12 | 2000 | 2000 | 2500 | CLN2000/80-12 | 71037 | 9.2 | CLN2000/80-12S | 79397 | 9.2 |
| 12 | 2100 | 2100 | 2600 | CLN2100/84-12 | 71044 | 9.5 | CLN2100/84-12S | 79398 | 9.5 |
| 12 | 2200 | 2200 | 2700 | CLN2200/88-12 | 71045 | 10.0 | CLN2200/88-12S | 79399 | 10.0 |
| 12 | 2300 | 2300 | 2800 | CLN2300/92-12 | 71046 | 10.5 | CLN2300/92-12S | 79400 | 10.5 |
| 12 | 2400 | 2400 | 2900 | CLN2400/96-12 | 71047 | 11.0 | CLN2400/96-12S | 79401 | 11.0 |
| 12 | 2500 | 2500 | 3000 | CLN2500/100-12 | 71048 | 11.2 | CLN2500/100-12S | 79402 | 11.2 |
| 12 | 2600 | 2600 | 3000 | CLN2600/104-12 | 71049 | 11.5 | CLN2600/104-12S | 79403 | 11.5 |
| 12 | 2800 | 2800 | 3300 | CLN2800/112-12 | 71050 | 12.0 | CLN2800/112-12S | 79404 | 12.0 |
| 12 | 3000 | 3000 | 3300 | CLN3000/120-12 | 71000 | 13.0 | CLN3000/120-12S | 79405 | 13.0 |

* Lead time for non-stocked items: 10 days

Stock Items (non-shaded) carried in factory inventory.
 Made to Order Items (shaded). Please contact Flexco for dispatch options and lead times.



Flex-Lag® Full Ceramic Lagging

Flex-Lag® Full Ceramic Lagging – FRAS SBR Rubber

| THICKNESS | BELT WIDTH | CERAMIC LENGTH | STRIP LENGTH | DIMPLED TILE | | | SMOOTH TILE | | |
|-----------|------------|----------------|--------------|------------------|-----------|--------|-------------------|-----------|--------|
| | | | | ORDERING NUMBER | ITEM CODE | WT. KG | ORDERING NUMBER | ITEM CODE | WT. KG |
| 12 | 450 | 460 | 860 | CLFR460/18.4-12 | 71118 | 3.5 | CLFR460/18.4-12S | 79406 | 3.5 |
| 12 | 600 | 600 | 1000 | CLFR600/24-12 | 71119 | 4.0 | CLFR600/24-12S | 79407 | 4.0 |
| 12 | 750 | 760 | 1160 | CLFR760/30.4-12 | 71120 | 4.3 | CLFR760/30.4-12S | 79408 | 4.3 |
| 12 | 800 | 800 | 1200 | CLFR800/32-12 | 71121 | 4.5 | CLFR800/32-12S | 79409 | 4.5 |
| 12 | 900 | 900 | 1300 | CLFR900/36-12 | 71122 | 5.0 | CLFR900/36-12S | 79410 | 5.0 |
| 12 | 1050 | 1060 | 1500 | CLFR1060/42.4-12 | 71123 | 5.5 | CLFR1060/42.4-12S | 79411 | 5.5 |
| 12 | 1200 | 1200 | 1600 | CLFR1200/48-12 | 71005 | 6.0 | CLFR1200/48-12S | 79412 | 6.0 |
| 12 | 1350 | 1360 | 1800 | CLFR1360/54.4-12 | A1636 | 7.0 | CLFR1360/54.4-12S | 79413 | 7.0 |
| 12 | 1400 | 1400 | 1800 | CLFR1400/56-12 | 71007 | 7.2 | CLFR1400/56-12S | 79414 | 7.2 |
| 12 | 1500 | 1520 | 2000 | CLFR1520/60.8-12 | 71009 | 7.5 | CLFR1520/60.8-12S | 79415 | 7.5 |
| 12 | 1600 | 1600 | 2000 | CLFR1600/64-12 | 71124 | 8.0 | CLFR1600/64-12S | 79416 | 8.0 |
| 12 | 1700 | 1700 | 2100 | CLFR1700/68-12 | 71078 | 8.3 | CLFR1700/68-12S | 79417 | 8.3 |
| 12 | 1800 | 1800 | 2300 | CLFR1800/72-12 | 71079 | 8.5 | CLFR1800/72-12S | 79418 | 8.5 |
| 12 | 1900 | 1900 | 2400 | CLFR1900/76-12 | 71080 | 9.0 | CLFR1900/76-12S | 79419 | 9.0 |
| 12 | 2000 | 2000 | 2500 | CLFR2000/80-12 | 71081 | 9.2 | CLFR2000/80-12S | 79420 | 9.2 |
| 12 | 2100 | 2100 | 2600 | CLFR2100/84-12 | 71082 | 9.5 | CLFR2100/84-12S | 79421 | 9.5 |
| 12 | 2200 | 2200 | 2700 | CLFR2200/88-12 | 71083 | 10.0 | CLFR2200/88-12S | 79422 | 10.0 |
| 12 | 2300 | 2300 | 2800 | CLFR2300/92-12 | 71084 | 10.5 | CLFR2300/92-12S | 79423 | 10.5 |
| 12 | 2400 | 2400 | 2900 | CLFR2400/96-12 | 71085 | 11.0 | CLFR2400/96-12S | 79424 | 11.0 |
| 12 | 2500 | 2500 | 3000 | CLFR2500/100-12 | 71086 | 11.2 | CLFR2500/100-12S | 79425 | 11.2 |
| 12 | 2600 | 2600 | 3000 | CLFR2600/104-12 | 71087 | 11.5 | CLFR2600/104-12S | 79426 | 11.5 |
| 12 | 2800 | 2800 | 3300 | CLFR2800/112-12 | 71088 | 12.0 | CLFR2800/112-12S | 79427 | 12.0 |
| 12 | 3000 | 3000 | 3300 | CLFR3000/120-12 | 71089 | 13.0 | CLFR3000/120-12S | 79428 | 13.0 |

FRAS (Fire Resistant Anti Static). FRAS Lagging complies with the requirements of MDG3608.

* Lead time for non-stocked items: 10 days

 Stock Items (non-shaded) carried in factory inventory.
 Made to Order Items (shaded). Please contact Flexco for dispatch options and lead times.

Flex-Lag® Lagging

Flex-Lag® Pulley Lagging is manufactured in strips 200 mm wide. It is this width in relation to the pulley circumference that determines the quantity of strips required to lag a pulley. A chart has been set out below for ease of calculation, relating to the pulley diameter.

FLEX-LAG® INSTALLATION INSTRUCTIONS

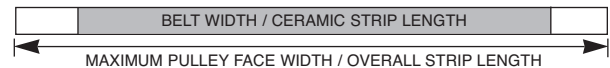
1. Measure pulley diameter and select the number of strips from the selection chart.
2. Cut strips approximately 50–100 mm wider than pulley face.
3. Sandblast pulley surface to obtain a clean surface. If necessary, clean pulley with solvent to remove any grease or oils.
4. Paint pulley surface with one coat of Conti Plus metal primer. Lagging can be fixed to the pulley anytime in the next 7 days. (Allow drying for 30 minutes at room temperature before applying cement.)
5. Apply one coat of Conti Secur BFA to the lagging and the pulley surface. (Remember to add the Activator RE to the tin of cement.) Depending on ambient temperatures, allow drying for 30 minutes at room temperature.
6. Scribe a straight line across the pulley face using a square to the edge of the pulley.
7. Apply second coat of cement to rubber and pulley surface. If the pulley is large, you may want to do this in stages, as you travel around the circumference.
8. Let each surface dry until tacky (use back of the finger test)
9. When tacky, apply the first strip along the scribed line and then carefully press down the full width of the strip. Hammer each strip down with a 'dead-blow' hammer, ensuring there are no air bubbles. A stitching roller can be handy for pressing down the cutting sypes.
10. Apply each subsequent strip in the same manner until there are three strips remaining.
11. Using a few small off-cuts of Flex Lag, work out how the three remaining strips must be cut to ensure they all fit.
12. Apply the remaining strips in the manner set out above. Always fix the widest of the three remaining strips last, as it is the most flexible and easy to use in the gap remaining.
13. Hammer down all strips again and be sure there are no gaps between any of the joints.
14. Trim excess lagging around the circumference of the pulley at a 45° angle.

STRIP SELECTION CHART

| PULLEY DIAMETER | STRIPS | PULLEY DIAMETER | STRIPS |
|-----------------|--------|-----------------|--------|
| 50 (min)–67mm | 1* | 637–700 mm | 11 |
| 68–129 mm | 2* | 701–764 mm | 12 |
| 130–196 mm | 3* | 765–827 mm | 13 |
| 197–259 mm | 4* | 828–891 mm | 14 |
| 260–319 mm | 5* | 892–955 mm | 15 |
| 320–381 mm | 6 | 956–1018 mm | 16 |
| 382–445 mm | 7 | 1019–1082 mm | 17 |
| 446–510 mm | 8 | 1083–1145 mm | 18 |
| 511–573 mm | 9 | 1146–1210 mm | 19 |
| 574–636 mm | 10 | 1211–1300 mm | 20 |

*Light Duty Lagging only. Rubber Lagging and Ceramic Lagging would be difficult to apply to pulleys with these diameters and is not recommended unless necessary.

CERAMIC STRIP CONFIGURATION



Stock Items (non-shaded) carried in factory inventory.
 Made to Order Items (shaded). Please contact Flexco for dispatch options and lead times.

Flex-Lag® Weld-On Rubber Lagging



STRIP SELECTION CHART

| PULLEY DIAMETER | STRIPS REQUIRED |
|-----------------|-----------------|
| 400 | 8 |
| 450 | 9 |
| 600 | 12 |
| 750 | 15 |
| 900 | 18 |
| 1050 | 21 |
| 1200 | 24 |
| 1350 | 27 |
| 1500 | 30 |
| 1800 | 36 |

Flex-Lag® Weld-on Diamond Lagging – SBR Rubber 400–725 mm Pulley Diameter

| BELT WIDTH | STRIP LENGTH | ORDERING NUMBER | ITEM CODE | WT. KG |
|------------|--------------|-----------------|-----------|--------|
| mm | mm | | | |
| 450 | 500 | WND18-16 | 72169 | 1.4 |
| 600 | 650 | WND24-16 | 72171 | 1.8 |
| 750 | 800 | WND30-16 | 72173 | 2.2 |
| 900 | 950 | WND36-16 | 72175 | 2.6 |
| 1050 | 1100 | WND42-16 | 72177 | 3.0 |
| 1200 | 1275 | WND48-16 | 72179 | 3.5 |
| 1350 | 1425 | WND54-16 | 72181 | 4.0 |
| 1500 | 1575 | WND60-16 | 72183 | 4.4 |
| 1800 | 1875 | WND72-16 | 72185 | 5.1 |

Flex-Lag® Weld-on Diamond Lagging – SBR Rubber 750 mm+ Pulley Diameter

| BELT WIDTH | STRIP LENGTH | ORDERING NUMBER | ITEM CODE | WT. KG |
|------------|--------------|-----------------|-----------|--------|
| mm | mm | | | |
| 450 | 500 | WND18-30 | 72170 | 1.4 |
| 600 | 650 | WND24-30 | 72172 | 1.8 |
| 750 | 800 | WND30-30 | 72174 | 2.2 |
| 900 | 950 | WND36-30 | 72176 | 2.6 |
| 1050 | 1100 | WND42-30 | 72178 | 3.0 |
| 1200 | 1275 | WND48-30 | 72180 | 3.5 |
| 1350 | 1425 | WND54-30 | 72182 | 4.0 |
| 1500 | 1575 | WND60-30 | 72184 | 4.4 |
| 1800 | 1875 | WND72-30 | 72186 | 5.1 |

Flex-Lag® Weld-on Diamond Lagging – FRAS SBR Rubber 400 – 725 mm Pulley Diameter

| BELT WIDTH | STRIP LENGTH | ORDERING NUMBER | ITEM CODE | WT. KG |
|------------|--------------|-----------------|-----------|--------|
| mm | mm | | | |
| 450 | 500 | WFRD18-16 | 72187 | 1.6 |
| 600 | 650 | WFRD24-16 | 72189 | 2.0 |
| 750 | 800 | WFRD30-16 | 72191 | 2.5 |
| 900 | 950 | WFRD36-16 | 72193 | 3.0 |
| 1050 | 1100 | WFRD42-16 | 72195 | 3.5 |
| 1200 | 1275 | WFRD48-16 | 72197 | 4.0 |
| 1350 | 1425 | WFRD54-16 | 72199 | 4.5 |
| 1500 | 1575 | WFRD60-16 | 72201 | 5.0 |
| 1800 | 1875 | WFRD72-16 | 72201 | 5.6 |

FRAS (Fire Resistant Anti Static). FRAS Lagging complies with the requirements of MDG3608.

* Lead time for non-stocked items: 10 days

Flex-Lag® Weld-on Diamond Lagging – FRAS SBR Rubber 750 mm+ Pulley Diameter

| BELT WIDTH | STRIP LENGTH | ORDERING NUMBER | ITEM CODE | WT. KG |
|------------|--------------|-----------------|-----------|--------|
| mm | mm | | | |
| 450 | 500 | WFRD18-30 | 72188 | 1.6 |
| 600 | 650 | WFRD24-30 | 72190 | 2.0 |
| 750 | 800 | WFRD30-30 | 72192 | 2.5 |
| 900 | 950 | WFRD36-30 | 72194 | 3.0 |
| 1050 | 1100 | WFRD42-30 | 72196 | 3.5 |
| 1200 | 1275 | WFRD48-30 | 72198 | 4.0 |
| 1350 | 1425 | WFRD54-30 | 72200 | 4.5 |
| 1500 | 1575 | WFRD60-30 | 72202 | 5.0 |
| 1800 | 1875 | WFRD72-30 | 72204 | 5.6 |

FRAS (Fire Resistant Anti Static). FRAS Lagging complies with the requirements of MDG3608.

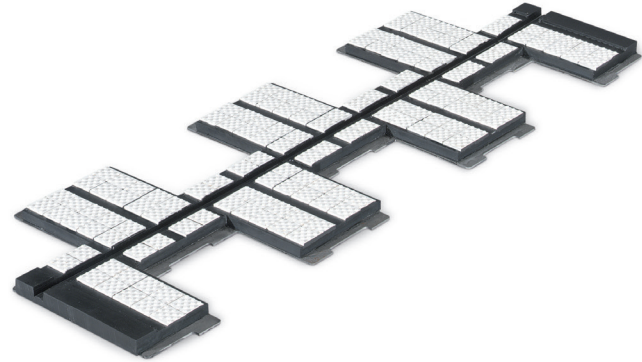
Stock Items (non-shaded) carried in factory inventory.
 Made to Order Items (shaded). Please contact Flexco for dispatch options and lead times.

Flex-Lag® Weld-On Full Ceramic Lagging

WNC weld-on ceramic lagging is supplied either flat or radiused.
 Recommend rolling of metal back prior to installation.
WNC weld on ceramic is available in FRAS rubber at a surcharge of 5%.

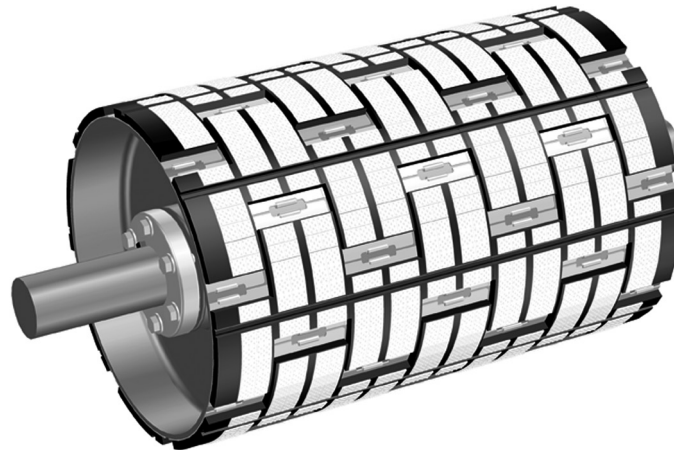
Flat Metal Backed Lagging

| STRIP WIDTH | ORDERING NUMBER | ITEM CODE | WT. KG |
|-------------|-----------------------|-----------|--------|
| mm | | | |
| 460 | WNC18/450-Flat strip | P2897 | 1.7 |
| 600 | WNC24/600-Flat strip | P2898 | 2.3 |
| 750 | WNC30/750-Flat strip | P2899 | 2.9 |
| 900 | WNC36/900-Flat strip | P2900 | 3.4 |
| 1050 | WNC42/1050-Flat strip | P2901 | 4.5 |
| 1200 | WNC48/1200-Flat strip | P2902 | 4.8 |
| 1350 | WNC54/1350-Flat strip | P2903 | 5.5 |
| 1500 | WNC60/1500-Flat strip | P2904 | 6.0 |
| 1800 | WNC72/1800-Flat strip | P2905 | 7.0 |



STRIP SELECTION CHART

| PULLEY DIAMETER | STRIPS REQUIRED |
|-----------------|-----------------|
| 400 | 8 |
| 450 | 9 |
| 600 | 12 |
| 750 | 15 |
| 900 | 18 |
| 1050 | 21 |
| 1200 | 24 |
| 1350 | 27 |
| 1500 | 30 |
| 1800 | 36 |



Radius Metal Backed Lagging – 400–725 mm Pulley Diameter



| BELT WIDTH | STRIP LENGTH | ORDERING NUMBER | ITEM CODE | WT. KG |
|------------|--------------|-----------------|-----------|--------|
| mm | mm | | | |
| 450 | 500 | WCLN18-16 | 71131 | 1.7 |
| 600 | 650 | WCLN24-16 | 71132 | 2.3 |
| 750 | 800 | WCLN30-16 | 71133 | 2.9 |
| 900 | 950 | WCLN36-16 | 71135 | 3.4 |
| 1050 | 1100 | WCLN42-16 | 71137 | 4.5 |
| 1200 | 1275 | WCLN48-16 | 71139 | 4.8 |
| 1350 | 1425 | WCLN54-16 | 71149 | 5.5 |
| 1500 | 1575 | WCLN60-16 | 71165 | 6.0 |
| 1800 | 1875 | WCLN72-16 | 71151 | 7.0 |

* Lead time for non-stocked items: 10 days

Radius Metal Backed Lagging – 725 mm+ Pulley Diameter

| BELT WIDTH | STRIP LENGTH | ORDERING NUMBER | ITEM CODE | WT. KG |
|------------|--------------|-----------------|-----------|--------|
| mm | mm | | | |
| 600 | 650 | WCLN24-30 | 71150 | 2.3 |
| 750 | 800 | WCLN30-30 | 71134 | 2.9 |
| 900 | 950 | WCLN36-30 | 71136 | 3.4 |
| 1050 | 1100 | WCLN42-30 | 71138 | 4.5 |
| 1200 | 1275 | WCLN48-30 | 71144 | 4.8 |
| 1350 | 1425 | WCLN54-30 | 71145 | 5.5 |
| 1500 | 1575 | WCLN60-30 | 71146 | 6.0 |
| 1800 | 1875 | WCLN72-30 | 71147 | 7.0 |

* Lead time for non-stocked items: 10 days

 Stock Items (non-shaded) carried in factory inventory.
 Made to Order Items (shaded). Please contact Flexco for dispatch options and lead times.

Flex-Lag® Adhesives

Flex-Lag® Adhesive

| SIZE & TYPE | CARTON QUANTITY | ITEM CODE | WT. KG |
|--|-----------------|-----------|--------|
| 0.8 litre | 12 | 75017 | 0.8 |
| 4.8 litre | 1 | 75019 | 4.9 |
| 200 litre | 1 | 64250 | 192.0 |
| COVERAGE – 2.5 SQUARE METRES PER LITRE | | | |

NOTE: 1 x 0.8L tin of Flex-Lag® Adhesive (75017) requires 1 x 40ml Flex-Lag® Activator (70186).

1 x 4.8L tin of Flex-Lag® Adhesive (75019) requires 6 x 40ml Flex-Lag® Activator (70186).

Flex-Lag® Activator – 40 ml Bottles

| SIZE & TYPE | CARTON QUANTITY | ITEM CODE | WT. KG |
|----------------------|-----------------|-----------|--------|
| Activator RE (40 ml) | 12 | 70186 | 0.1 |

Flex-Lag® Primer

| SIZE & TYPE | CARTON QUANTITY | ITEM CODE | WT. KG |
|---------------------------------------|-----------------|-----------|--------|
| 0.8 Litre | 6 | 70186 | 0.9 |
| COVERAGE – 12 SQUARE METRES PER LITRE | | | |



- Stock Items (non-shaded) carried in factory inventory.
- Made to Order Items (shaded). Please contact Flexco for dispatch options and lead times.

Conrema® Filler Rubber

| THICKNESS | ITEM CODE | WT. KG |
|-----------|-----------|--------|
| mm | | |
| 1.5 | 70191 | 6.9 |
| 3 | 70192 | 11.1 |

Tacky on both sides & supplied in rolls 500 mm wide & 5 metres long.

Conrema® Repair Bands

| WIDTH | ITEM CODE | WT. KG |
|-------|-----------|--------|
| mm | | |
| 50 | 70193 | 1.4 |
| 70 | 70194 | 2.0 |
| 100 | 70195 | 3.2 |
| 150 | 70196 | 4.8 |
| 220 | 70197 | 6.8 |
| 300 | 73952 | 9.6 |

2 mm thick and 10 metres long.

Conrema® Repair Bands – Fabric Reinforced



| WIDTH | ITEM CODE | WT. KG |
|-------|-----------|--------|
| mm | | |
| 150 | 74994 | 6.0 |
| 220 | A1796 | 9.0 |
| 300 | 75002 | 12.0 |

4 mm thick and 10 metres long.

Conrema® Repair – Fabric-EP160

| MODEL/SIZE | ITEM CODE | WT. KG |
|--|-----------|--------|
| 600 mm x 10 m x 1.6 mm (12M ²) | 75020 | 15.5 |

2 mm thick - 600 mm x 10 metres.

 Stock Items (non-shaded) carried in factory inventory.
 Made to Order Items (shaded). Please contact Flexco for dispatch options and lead times.

This page intentionally left blank.

This page intentionally left blank.

This page intentionally left blank.



Partners in Productivity

10 Solent Circuit • Norwest NSW 2153

Phone: +61 2 8818 2000 Fax: +61 2 8824 6333

E-mail: salesau@flexco.com

www.flexco.com