

# Novitool® Aero® Press and Amigo™ 110V Power Bank Requirements

## Technical Specifications

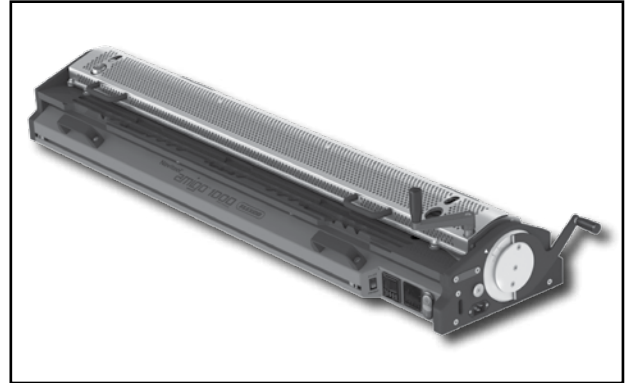
Flexco recommends use of a Power Bank when splicing without a readily-available power source. Before selecting a power bank, please refer to the information below to help you select the proper bank for your splice press. Please take proper safety precautions at all times when using your splice press and power bank.



### Requirements for Aero®

- Pure sine wave inverter
- 20 amp outlet for Aero® 925 and 1225
- 20 or 15 amp outlet for Aero 325 and 625
- 2000 watt output continuous for Aero 925 and 1225
- 1800 watt output continuous for Aero 325 and 625

Press Size	Approximate watt-hr per splice	Approximate number of splices from 2000 watt-hr power bank
Aero® 325	150	10
Aero 625	275	5
Aero 925	400	4
Aero 1225	525	3



### Requirements for Amigo™

- Pure sine wave inverter
- 20 amp outlet
- Minimum 1700 watt output continuous for Amigo™ 1000
- Minimum 1200 watt output continuous for Amigo 625

Press Size	Approximate watt-hr per splice	Approximate number of splices from 2000 watt-hr power bank
Amigo™ 625	160	10
Amigo 1000	245	6

### Notes

- Values can vary significantly based on splice settings, belt type and thickness, press starting temperature, etc.
- To determine number of cycles possible, multiply the battery's watt-hr rating by 0.8 to maintain 20% charge, then divide that solution by the above watt-hr per cycle.

### Other Items to Consider

- Weight
- Physical Size
- Charge Time
- Charging Device Requirements and Options



2525 Wisconsin Avenue • Downers Grove, IL 60515-4200 • USA  
Tel: (630) 971-0150 • Fax: (630) 971-1180 • E-mail: info@flexco.com

Visit [www.flexco.com](http://www.flexco.com) for other Flexco locations and products.

©2021 Flexible Steel Lacing Company. 12-09-21. For Reorder: 102594

