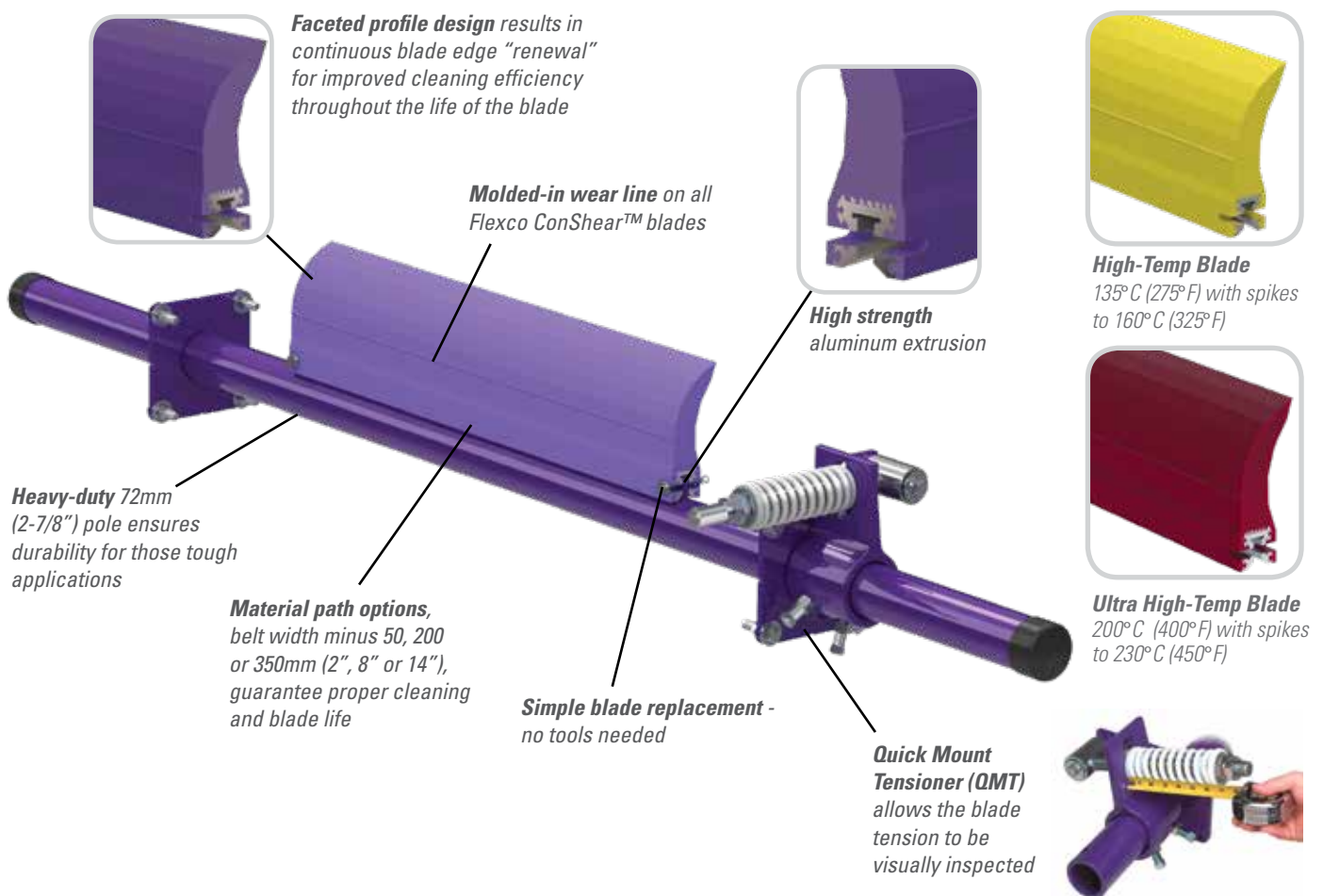


MSP Standard Mine-Duty Precleaner

Economical and Effective

The MSP Standard-Duty Precleaner design combines simple, do-it-yourself installation, quick maintenance and effective cleaning results with an affordable price tag, making it a great choice for belts all around the cement plant. Cleaner belts mean much less material is dropped around the plant, reducing time spent cleaning up around the conveyors. The robust pole withstands the abuse of crushed limestone and the other raw materials being conveyed around the plant to crushers, stockpiles and mills. High-Temp and Ultra High-Temp blade options are available for belts carrying clinker.



Features and Benefits

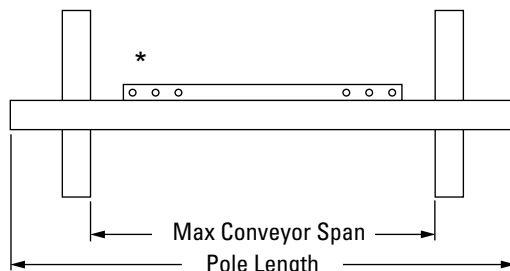
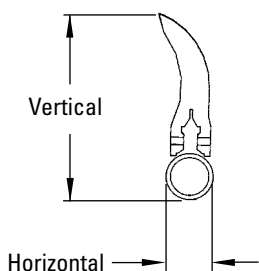
- **Quick-change blade.** No tools are needed. Just pull one pin, remove the old blade, slide in the new one and replace the pin.
- **Works with Flexco and other mechanical splices.** The spring tensioner quickly moves the blade away from the belt when a splice passes. The polyurethane blade easily glides over the splice without damage and with minimal cleaning disruption.
- **Easy to service.** All maintenance work is done from the easy-access side of the beltline. Blade retensioning and changeout are quick and easy.
- **Fits most conveyor structures.** Available for belt widths from 600 to 2100mm (24" to 84"). The MSP poles are extra long (belt width plus 1350 mm/54") to accommodate varying structure widths.

MSP

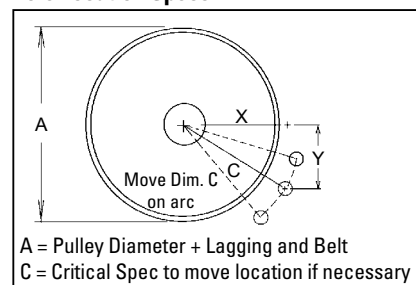
Standard Mine-Duty Precleaner

Specifications and Guidelines

- Maximum Belt Speed**
3.5 M/sec (700 FPM)
- Temperature Rating**
Purple: -35°C to 82°C (-30°F to 180°F)
Yellow: -35°C to 135°C (-30°F to 275°F)
Spikes to 160°C (325°F)
Red: -35°C to 200°C (-30°F to 400°F)
Spikes to 230°C (450°F)
- Minimum Pulley Diameter**
400mm (16")
- Blade Height**
185mm (7-1/4")
- Usable Blade Wear Length**
100mm (4")
- Blade Material**
Purple: Polyurethane 83 durometer
Yellow: Polyurethane 93 durometer
Red: Ultra High-Temp Polyurethane 90 durometer (proprietary blends for abrasion resistance and long wear)
- Available for Belt Widths**
600 to 2100mm (24" to 84")
- CEMA Cleaner Rating**
Class 3
- Horizontal Clearance Required**
100mm (4")
- Vertical Clearance Required**
254mm (10")
- Pole Length**
Cleaner size + 1350mm (54")
- Maximum Conveyor Span**
Cleaner size + 1100mm (44")



Pole Location Specs



Pole Location Chart

A	X	Y	C	A	X	Y	C	A	X	Y	C
400	204	305	367	625	314	230	390	850	446	230	501
425	218	305	375	650	330	230	402	875	460	230	514
450	231	305	383	675	346	230	415	900	474	230	526
475	244	305	390	700	360	230	427	925	488	230	539
500	259	305	400	725	374	230	439	950	502	230	552
525	274	305	410	775	389	230	452	975	516	230	565
550	288	305	419	775	403	230	464	1000	529	230	576
575	300	305	428	825	417	230	477	1025	542	230	589
600	315	305	438	825	432	230	489	1050	557	230	602



MSP Standard-Duty Precleaner Belt Width Minus 50mm

Belt Width	Blade Width	Ordering Number	Item Code
mm	in.		
600	24	MSP600-50	81000
750	30	MSP750-50	81001
900	36	MSP900-50	81002
1050	42	MSP1050-50	81003
1200	48	MSP1200-50	81004
1350	54	MSP1350-50	81005
1500	60	MSP1500-50	81006
1800	72	MSP1800-50	81007
2100	84	MSP2100-50	81008

MSP Standard-Duty Precleaner Belt Width Minus 200mm

Belt Width	Blade Width	Ordering Number	Item Code
mm	in.		
600	24	MSP600-200	81009
750	30	MSP750-200	81010
900	36	MSP900-200	81011
1050	42	MSP1050-200	81012
1200	48	MSP1200-200	81013
1350	54	MSP1350-200	81014
1500	60	MSP1500-200	81015
1800	72	MSP1800-200	81016
2100	84	MSP2100-200	81017

Replacement ConShear™ Blades

Blade Width		Ordering Number	Item Code
mm	in.		
400	16	CRB-16	75629
550	22	CRB-22	75630
700	28	CRB-28	75631
850	34	CRB-34	75632
1000	40	CRB-40	75633
1150	46	CRB-46	75634
1300	52	CRB-52	75635
1450	58	CRB-58	75636
1600	64	CRB-64	75775
1750	70	CRB-70	75773

Other blade sizes available upon request.

Ordering information shown is for the standard mild steel MSP with purple blade.
Contact your Flexco distributor or visit www.flexco.com for other cleaner/blade options.

Authorized Distributor: