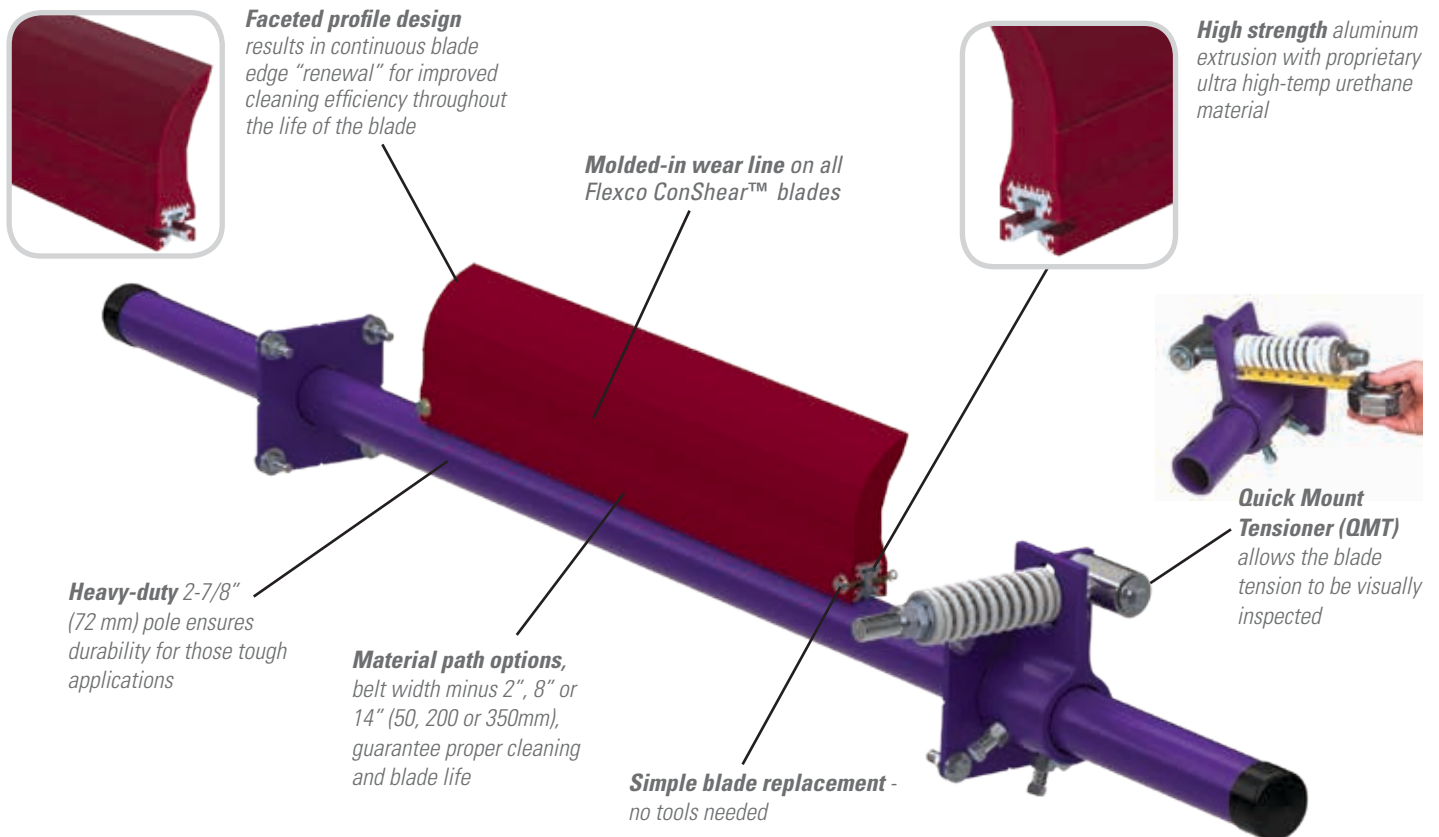


MSP

Ultra High Temperature Standard Mine-Duty Precleaner

Economical and Effective

Now there is a new polyurethane-blade precleaner that outperforms other “hot” blades. The Ultra High-Temp ConShear™ Blade is designed for continuous ambient temperatures up to 400°F (200°C) and spikes to 450°F (232°C). This deep red blade takes the heat and yet provides the extended wear life of Flexco’s standard ConShear blade. More wear life means fewer blade change-outs. And our heavy-duty Quick Mount Tensioner offers easy visual inspection of the blade tension. A heavy-duty 2-7/8" (72mm) diameter pole ensures durability for tough applications.



Features and Benefits

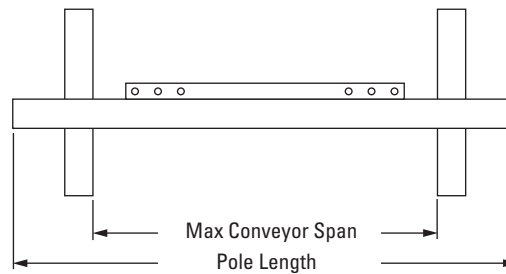
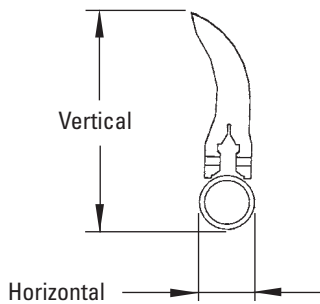
- **Quick-change blade.** No tools are needed. Just pull one pin, remove the old blade, slide in the new one and replace the pin.
- **Works with Flexco and other mechanical splices.** The spring tensioner quickly moves the blade away from the belt when a splice passes. The polyurethane blade easily glides over the splice without damage and with minimal cleaning disruption.
- **Easy to service.** All maintenance work is done from the easy-access side of the beltline. Blade retensioning and change-out are quick and easy.
- **Fits most conveyor structures.** Available for belt widths from 24" to 72" (600 to 1800mm). The MSP poles are extra long (belt width plus 54"/1350 mm) to accommodate varying structure widths.

MSP

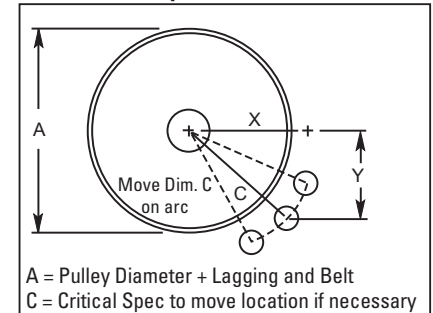
Ultra High-Temp Standard Mine-Duty Precleaner

Specifications and Guidelines

- Maximum Belt Speed**
700 FPM (3.5 M/sec)
- Temperature Rating**
Up to 400°F (200°C)
with spikes up to 450°F (232°C)
- Minimum Pulley Diameter**
16" (400mm)
- Blade Height**
7-1/4" (185mm)
- Usable Blade Wear Length**
4" (100mm)
- Blade Material**
Ultra High-Temp Polyurethane
90 durometer (proprietary
blend for abrasion resistance
and long wear)
- Available for Belt Widths**
24" – 72" (600 mm – 1800 mm)
- CEMA Cleaner Rating**
Class 3
- Horizontal Clearance Required**
4" (100mm)
- Vertical Clearance Required**
10" (254mm)
- Pole Length**
Cleaner size + 54" (1350mm)
- Maximum Conveyor Span**
Cleaner size + 44" (1100mm)



Pole Location Specs



Ordering Information

		Blade Coverage						MSP Ultra High-Temp Precleaners					
Belt Width		-2" (50mm) Coverage		-8" (200mm) Coverage		-14" (350mm) Coverage		BW - 2" (50mm)		BW - 8" (200mm)		BW - 14" (350mm)	
in.	mm	in.	mm	in.	mm	in.	mm	Ordering Number	Item Code	Ordering Number	Item Code	Ordering Number	Item Code
24	600	22	550	16	400	-	-	MSP-UHT224	91264	MSP-UHT824	91272	-	-
30	750	28	700	22	550	-	-	MSP-UHT230	91265	MSP-UHT830	91273	-	-
36	900	34	850	28	700	-	-	MSP-UHT236	91266	MSP-UHT836	91274	-	-
42	1050	40	1000	34	850	28	700	MSP-UHT242	91267	MSP-UHT842	91275	MSP-UHT1442	91280
48	1200	46	1150	40	1000	34	850	MSP-UHT248	91268	MSP-UHT848	91276	MSP-UHT1448	91281
54	1350	52	1300	46	1150	40	1000	MSP-UHT254	91269	MSP-UHT854	91277	MSP-UHT1454	91282
60	1500	58	1450	52	1300	46	1150	MSP-UHT260	91270	MSP-UHT860	91278	MSP-UHT1460	91283
72	1800	70	1750	64	1600	58	1450	MSP-UHT272	91271	MSP-UHT872	91279	MSP-UHT1472	91284

ConShear UHT Replacement Blades			
Blade Width		Ordering Number	Item Code
in.	mm		
10	250	CRB-UHT10	91253
16	400	CRB-UHT16	91254
22	550	CRB-UHT22	91255
28	700	CRB-UHT28	91256
34	850	CRB-UHT34	91257
40	1000	CRB-UHT40	91258
46	1150	CRB-UHT46	91259
52	1300	CRB-UHT52	91260
58	1450	CRB-UHT58	91261
64	1600	CRB-UHT64	91262
70	1750	CRB-UHT70	91263



Pole Location Chart

A	X	Y	C
16"	7-1/8"	9"	11-1/2"
17"	7-7/8"	9"	12"
18"	8-1/4"	9"	12-1/4"
19"	9"	9"	12-3/4"
20"	9-3/8"	9"	13"
21"	10"	9"	13-1/2"
22"	10-3/4"	9"	14"
23"	11-3/8"	9"	14-1/2"
24"	12"	9"	15"
25"	12-5/8"	9"	15-1/2"
26"	13-1/4"	9"	16"
27"	13-7/8"	9"	16-1/2"
28"	14-3/8"	9"	17"
29"	15"	9"	17-1/2"
30"	15-5/8"	9"	18"
31"	16-1/8"	9"	18-1/2"
32"	16-3/4"	9"	19"
33"	17-1/4"	9"	19-1/2"
34"	17-7/8"	9"	20"
35"	18-3/8"	9"	20-1/2"
36"	19"	9"	21"
37"	19-1/2"	9"	21-1/2"
38"	20"	9"	22"
39"	20-5/8"	9"	22-1/2"
40"	21-1/8"	9"	23"
41"	21-3/4"	9"	23-1/2"
42"	22-1/4"	9"	24"

Authorized Distributor:



2525 Wisconsin Avenue • Downers Grove, IL 60515-4200 • USA
Tel: (630) 971-0150 • Fax: (630) 971-1180 • E-mail: info@flexco.com

Visit www.flexco.com for other Flexco locations and products.

©2019 Flexible Steel Lacing Company. 10/10/19. For Reorder: X5415

