

# Smart Clamp™ Belt Clamps

## Fast Setup Saves Costly Downtime for Parcel Handling

Designed for the Parcel Industry, the SmartClamp™ system speeds belt clamping for installation of Clipper® Wire Hooks. Faster and stronger than bolt clamping methods, SmartClamps were developed with worker safety in mind during belt maintenance. Key to the design, clamping pressure is evenly distributed over the entire clamp surface keeping belt integrity intact and maintenance hazards to a minimum.



### ***Safer.***

The SmartClamp was engineered to maximize strength and performance. The wedge grip design places an evenly distributed pressure load over the entire clamp interface. The set of four clamps permits safe pulling of belts with up to 900 kg of take-up load. Each individual clamp is rated up to a 450 kg load.

### ***Faster.***

Unlike other clamp systems which require time-consuming adjustments, the SmartClamp™ needs only a quick tap of a hammer to prelock the wedges. Attach and tighten come-alongs and the final lock is engaged. This fast setup saves precious and costly time during a breakdown situation.

With SmartClamps you do not need to sacrifice efficiencies for safety. These easy-to-install belt clamps make the choice obvious for maximum belt conveyor uptime.

### ***Smarter.***

\*Patent 7,552,517

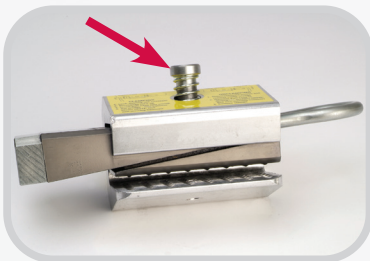
[www.flexco.com](http://www.flexco.com)

**FLEXCO**

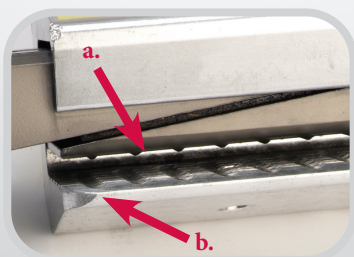
## Features and Benefits



*Large impact plate provides easy striking surface.*



*Return Spring Post holds wedges up so belt can easily slide into clamping position.*



*Ribbed lower wedge and grooved housing provide additional holding strength (a).*

*Beveled edges of the housing permit easy belt engagement. Elimination of sharp corners and edges provide a smoother transition from clamp to belt, reducing the chance of belt damage (b).*

## Smart Clamp™ Belt Clamps



### Ordering Information

Ordering Number	Item Code	Weight	Belt Thickness
		kgs.	mm
SMARTCLAMP	04073	21.0	up to 8

*Note: A complete set of SmartClamps includes four clamps with two convenient carrying bags.*

## Other Flexco Safe™ Products:

### 900 Series\* Belt Cutter

Designed to enhance operator safety with the fully enclosed cutting blade, this lightweight, portable belt cutter delivers straight, accurate cuts, time after time. Available in five widths: 600, 900, 1200, 1500, and 1800 mm.



\*Patent pending

Authorised Distributor:

Flexco Europe GmbH • Maybachstrasse 9 • 72348 Rosenfeld • Deutschland  
Tel: +49-7428-9406-0 • Fax: +49-7428-9406-260 • E-mail: europe@flexco.com

Visit [www.flexco.com](http://www.flexco.com) for other Flexco locations and products.

©2018 Flexible Steel Lacing Company. 05-19-20. X4990

