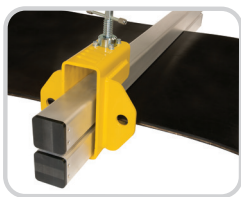




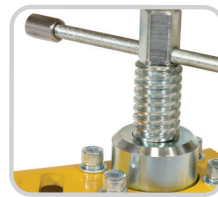
## TUG™ HD® Belt Clamps

# Ultimate Grip and Superior Strength Combine to Secure the Belt

Flexco understands that worker safety is a top priority when repairing belts carrying larger loads. Flexco TUG™ HD® Belt Clamps are designed to secure the belt for belt repair meeting the most stringent safety test standards. Available in 6 and 8 ton versions, TUG HD Belt Clamps provide even tensioning across the entire belt width for ultimate strength. Modular components allow for increased versatility and portability.



*Clamps over the belt for greater strength*



*Acme thread offers superior grip strength and allow operators the chance to slowly release the belt after maintenance*



*Extruded non-slip grip pattern on aluminum bars provides ultimate holding power*



*Easy to carry heat-treated aluminum clamp bars*



*Clamp Ends feature increased capacity for easier clamp bar insertion*

### Features and Benefits:

- **Safety first.** Third-party tested. Safety factors of clamp ratings meet or exceed industry standards.
- **Easy belt maintenance.** A single pair can be used to block off belt for maintenance.
- **Belt versatility.** Can be used on multiple conveyor belting types including flat, sidewall, chevron, and other specialty profiles.
- **Engineered for tough conditions.** Designed with high-grade aluminum bars and structural steel clamp ends. Shock absorbing end caps are designed to protect the bars from hammer use and drops.
- **Ideal for larger loads.** 6 and 8 ton load capacity ratings and belt widths up to 2400 mm.

### Available versions

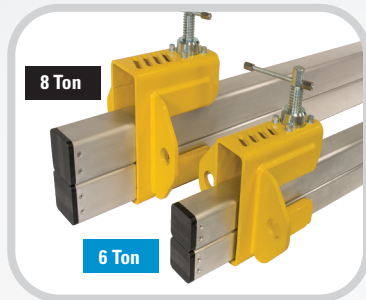
6 Ton

8 Ton

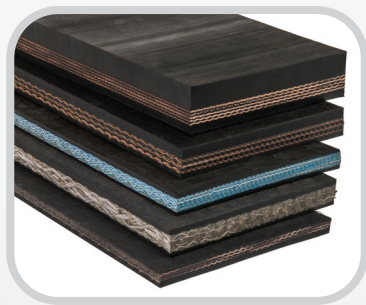
Easy on-site identification clamp labels are color-coded blue for 6 Ton and black for 8 Ton.

## Secure Versatility

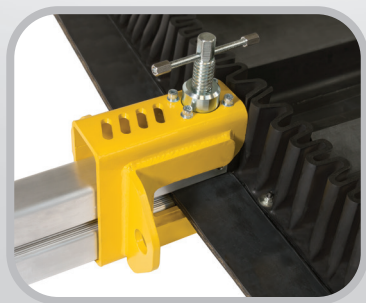
TUG™ HD® Belt Clamps are engineered for heavy-duty applications and can be used with a variety of materials and belt types.



6 ton clamps are available for belts up to 1800 mm wide and up to 50 mm thick, while the 8 ton clamps are available for belts up to 2400 mm wide and up to 55 mm thick.



Can be used on solid woven PVC/PVG or rubber cover plied belting.



TUG HD Belt Clamps are perfect for use with sidewall belts. Ordering numbers for a pair of 300 mm bars are TUG6B-12-AL, TUG8B-12-AL.

## TUG™ HD® Belt Clamps

### TUG™ HD® Belt Clamps Specifications

Version	Maximum Belt Thickness	Clamp Screw Torque	Rated Load Capacity
TUG6	50 mm	270 N-m	6 Metric Tons
TUG8	55 mm	270 N-m	8 Metric Tons

Note: 32 mm maximum belt thickness when using TUG6E clamp ends with Far-Pul™ HD® bars.

### TUG™ HD® Belt Clamps COMPLETE Ordering Information

Belt Width mm	Ordering Number		TUG6 Weight	TUG8 Weight
	6 Ton	8 Ton	kgs.	kgs.
Up to 900	TUG6-36-AL	TUG8-36-AL	61	81
Up to 1050	TUG6-42-AL	TUG8-42-AL	64	86
Up to 1200	TUG6-48-AL	TUG8-48-AL	67	91
Up to 1400	TUG6-54-AL	TUG8-54-AL	70	96
Up to 1600	TUG6-60-AL	TUG8-60-AL	73	101
Up to 1800	TUG6-72-AL	TUG8-72-AL	80	111
Up to 2200	N/A	TUG8-84-AL	N/A	121
Up to 2400	N/A	TUG8-96-AL	N/A	131

Note: A complete set of TUG™ HD® Belt Clamps includes four aluminum clamp bars and four steel clamp ends. Contact customer service for information on steel bars.

### TUG™ HD® Belt Clamps PAIR Ordering Information

Belt Width mm	Ordering Number		TUG6 Weight	TUG8 Weight
	6 Ton	8 Ton	kgs.	kgs.
Up to 900	TUG6P-36-AL	TUG8P-36-AL	30	40
Up to 1050	TUG6P-42-AL	TUG8P-42-AL	32	43
Up to 1200	TUG6P-48-AL	TUG8P-48-AL	34	45
Up to 1400	TUG6P-54-AL	TUG8P-54-AL	35	48
Up to 1600	TUG6P-60-AL	TUG8P-60-AL	37	50
Up to 1800	TUG6P-72-AL	TUG8P-72-AL	40	55
Up to 2200	N/A	TUG8P-84-AL	N/A	60
Up to 2400	N/A	TUG8P-96-AL	N/A	65

Note: A pair of TUG™ HD® Belt Clamps includes two aluminum clamp bars and two steel clamp ends. Contact customer service for information on steel bars.

### TUG™ HD® Belt Clamps REPLACEMENT BARS PAIR Ordering Information

Belt Width mm	Ordering Number		TUG6 Weight	TUG8 Weight
	6 Ton	8 Ton	kgs.	kgs.
300	TUG6B-12-AL	TUG8B-12-AL	3	5
Up to 900	TUG6B-36-AL	TUG8B-36-AL	10	15
Up to 1050	TUG6B-42-AL	TUG8B-42-AL	11	17
Up to 1200	TUG6B-48-AL	TUG8B-48-AL	13	20
Up to 1400	TUG6B-54-AL	TUG8B-54-AL	14	22
Up to 1600	TUG6B-60-AL	TUG8B-60-AL	16	25
Up to 1800	TUG6B-72-AL	TUG8B-72-AL	19	30
Up to 2200	N/A	TUG8B-84-AL	N/A	35
Up to 2400	N/A	TUG8B-96-AL	N/A	40

Note: A replacement complete set of TUG™ HD® Belt Clamps includes two aluminum clamp bars. Contact customer service for information on steel bars.

### TUG™ REPLACEMENT CLAMP END

Ordering Number	Weight
	kgs.
TUG6E	10
TUG8E	13

Note: Includes one Steel Clamp End

### Aluminum Content

Aluminum Alloy Type	Percent	
	Mg Magnesium	Ti Titanium
6061	1.00%	0%

Authorised Distributor:

Flexco Europe GmbH • Maybachstrasse 9 • 72348 Rosenfeld • Deutschland  
Tel: +49-7428-9406-0 • Fax: +49-7428-9406-260 • E-mail: europe@flexco.com

Visit [www.flexco.com](http://www.flexco.com) for other Flexco locations and products.

©2016 Flexible Steel Lacing Company. 05-27-20. For Reorder: X4670

