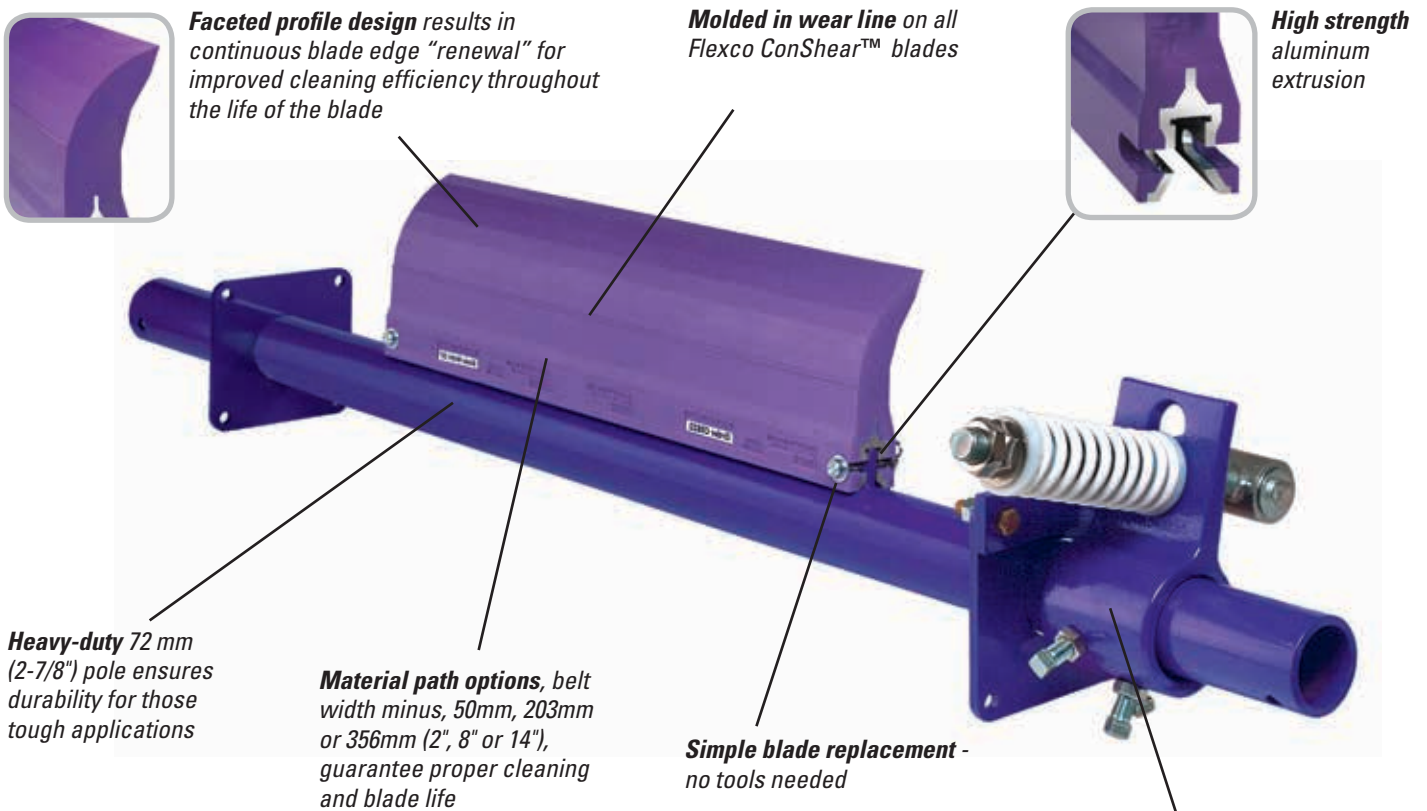


MSP

Standard Mine-Duty Precleaner

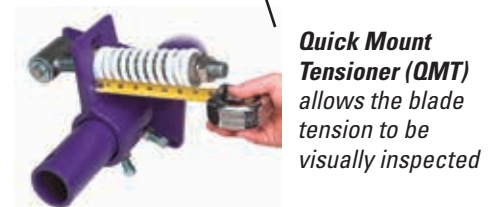
Economical and Effective

The MSP Standard-Duty Precleaner is not your average solid-blade belt cleaner that mounts on the head pulley. It is a mine-tough design that combines simple, do-it-yourself installation, quick maintenance and effective cleaning results with an affordable price tag.



Features and Benefits

- **Quick-change blade.** No tools are needed. Just pull one pin, remove the old blade, slide in the new one and replace the pin.
- **Works with Flexco and other mechanical splices.** The spring tensioner quickly moves the blade away from the belt when a splice passes. The polyurethane blade easily glides over the splice without damage and with minimal cleaning disruption.
- **Easy to service.** All maintenance work is done from the easy-access side of the beltline. Blade retensioning and change-out are quick and easy.
- **Fits most conveyor structures.** Available for belt widths from 600 to 2100mm" (24" to 84"). The MSP poles are extra long (belt width plus 1350mm/54") to accommodate varying structure widths.

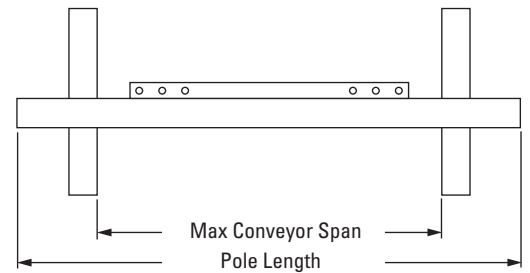
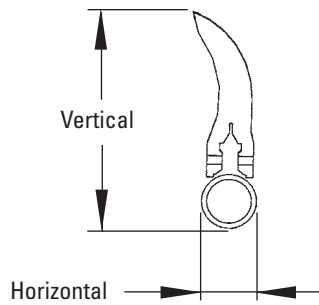
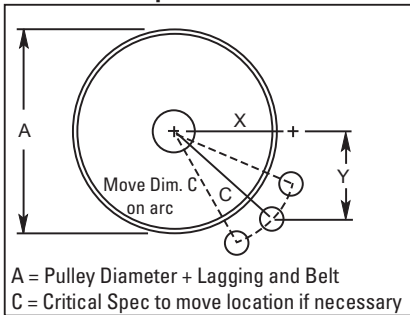


MSP Standard Mine-Duty Precleaner

Specifications and Guidelines

- **Maximum Belt Speed**
3.5 M/sec (700 FPM)
- **Temperature Rating**
-35°C to 82°C (-30°F to 180°F)
- **Minimum Pulley Diameter**
400mm (16")
- **Blade Height**
185mm (7-1/4")
- **Usable Blade Wear Length**
100mm (4")
- **Blade Material**
Polyurethane 83 durometer (proprietary blend for abrasion resistance and long wear)
- **Available for Belt Widths**
600 to 2100mm (24" to 84")
- **Horizontal Clearance Required**
100mm (4")
- **Vertical Clearance Required**
254mm (10")
- **Pole Length**
Cleaner size + 1350mm (54")
- **Maximum Conveyor Span**
Cleaner size + 1100mm (44")

Pole Location Specs



Pole Location Chart

A	X	Y	C	A	X	Y	C	A	X	Y	C
400	204	305	367	625	314	230	390	850	446	230	501
425	218	305	375	650	330	230	402	875	460	230	514
450	231	305	383	675	346	230	415	900	474	230	526
475	244	305	390	700	360	230	427	925	488	230	539
500	259	305	400	725	374	230	439	950	502	230	552
525	274	305	410	775	389	230	452	975	516	230	565
550	288	305	419	775	403	230	464	1000	529	230	576
575	300	305	428	825	417	230	477	1025	542	230	589
600	315	305	438	825	432	230	489	1050	557	230	602

Ordering Information

MSP Standard-Duty Precleaner
Belt Width Minus 2"

Belt Width	Blade Width	Ordering Number	Item Code
mm	in.		
600	24	MSP-224	75787
750	30	MSP-230	75788
900	36	MSP-236	75789
1050	42	MSP-242	75790
1200	48	MSP-248	75791
1350	54	MSP-254	75792
1500	60	MSP-260	75793
1800	72	MSP-272	75794
2100	84	MSP-284	76796

MSP Standard-Duty Precleaner
Belt Width Minus 8"

Belt Width	Blade Width	Ordering Number	Item Code
mm	in.		
600	24	MSP-824	75795
750	30	MSP-830	75796
900	36	MSP-836	75797
1050	42	MSP-842	75798
1200	48	MSP-848	75799
1350	54	MSP-854	75800
1500	60	MSP-860	75801
1800	72	MSP-872	75802
2100	84	MSP-884	76797

Replacement ConShear™ Blades

Blade Width		Ordering Number	Item Code
mm	in.		
300	16	CRB-16	75629
350	22	CRB-22	75630
450	28	CRB-28	75631
600	34	CRB-34	75632
750	40	CRB-40	75633
800	46	CRB-46	75634
950	52	CRB-52	75635
1000	58	CRB-58	75636
1150	64	CRB-64	75775
1200	70	CRB-70	75773
1350	76	CRB-76	76940
1400	82	CRB-84	76941

Other blade sizes available upon request.

Authorized Distributor:

236 Albert Amon Rd • Meadowdale Ext. 7 • Germiston 1614 • South Africa
Tel: +27-11-608-4180 • Fax: +27-11-454-5821 • E-mail: flexco@flexco.co.za

Visit www.flexco.com for other Flexco locations and products.

©2015 Flexible Steel Lacing Company. 07/15. For reorder: X3946

