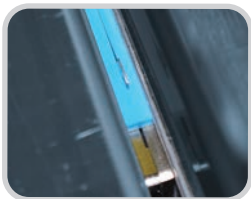


## Engineered for Precision Belt Splicing

Splices in monolithic belting must ensure tight pitch tolerance and be free from pinhole air pockets. Everything about the Amigo™ has been designed to do just that. And in typical Novitool® design, it was made to do it with ease, safety, and speed.

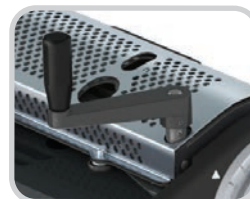
Custom templates secure the belt when cut to ensure accurate pitch control. Then the contactless heating process splices the belt in less than one minute and finishes with a controlled amount of clash. To ensure quality splices, pinholes are avoided through engineered solutions such as the pre-heat function to remove moisture from the belt ends; the shielded heat zone for consistent heating in various environmental conditions; and the contactless heating method. Accuracy, speed, and operator safety are fully integrated into the Amigo design making it an ideal splicing tool for in-shop or on-site splicing.



**Integrated Belt Cutter**  
maintains accurate pitch  
in a single pass



**Contactless Heating**  
provides for a controlled  
amount of clash without  
actual contact with the  
heat source



**Shielded Heat Zone and  
Temperature Control**  
ensures splice parameter  
consistency regardless of  
ambient temperatures



Operates on **Single Phase**  
115V or 230V



**Interchangeable Splice  
Templates** for precise pitch  
splicing of belts from various  
belt manufacturers



**Digital Time  
Control** with  
quick, simple splice  
settings; the **Pre-Heat Setting** can be used to  
remove moisture and avoid pinholes



Custom **Transport  
Case** for easy storage  
and transportation

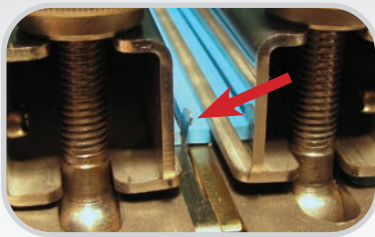


### Amigo™ Dimension Information

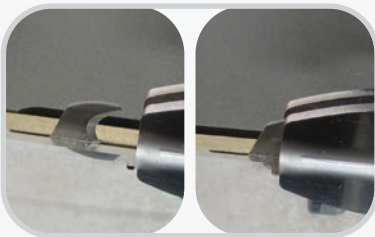
	DIMENSIONS	WEIGHT
Machine	1425 mm (56.1") × 315 mm (12.4") × 170 mm (6.7")	38.5 kg (85 lb)
Transport Case (includes additional templates and support equipment)	1700 mm (66.9") × 490 mm (19.3") × 385 mm (15.2")	36.3 kg (80 lb)
<b>Total Weight</b>		<b>74.8 kg (165 lb)</b>

\*Patent Number: US 8,770,253 B2, other patents pending

## Safety Features of the Amigo™



**Integrated Cutter:** Operator is protected from blade during single pass cutting operation.



**Cutter Storage Position:** Cutter must be in storage position for splicing function to operate.



**Shielded Heat Zone:** Guard must be closed for heat emitter to function. Operator is protected from heat source during splicing.



**Cool Zone:** Heater stows and cools inside unit as belt ends are butt-welded together.

## NOVITool® AMIGO™ Splice Press for Monolithic Belts

Amigo™ Press and Cable Ordering Information			
	Ordering Number	Item Code	
<b>Press</b>			
1065 mm (42")	AMIGO-1000-SPLICEPRESS	08545	
<b>Cables</b>			
230 volt; single phase; 16 amp	AMIGO-1000-CABLE-1X230-IECBR3	08588	
230 volt; single phase; 13 amp	AMIGO-1000-CABLE-1-X230-CEE77	08707	

NOTE: Press, cable, and templates are all purchased separately.

Amigo™ Belt Template Ordering Information				
Item Code	Ordering Number	Belt Manufacturer	Belt Style	Belt Type
<b>Templates</b>				
08592	AMIGO-1000-TMPLT-08592	Volta	SuperDrive™	FMW & FMB FHW & FHB
08593	AMIGO-1000-TMPLT-08593	Intralox®	ThermoDrive®	8050 8026
		Mafdel	DEL/DRIVE	DD25
08594	AMIGO-1000-TMPLT-08594	Habasit	Cleandrive™	CD.M50.S-UA.CB
				CD.M50.S-UA.WB
				CD.M25.S-UA.CB
				CD.M25.S-UA.WB
08595	AMIGO-1000-TMPLT-08595			Flat
08596	AMIGO-1000-TMPLT-08596	Gates® Mectrol®	PosiClean®	PC10 PC20
		UBR	1" Purclean	PS2
08597	AMIGO-1000-TMPLT-08597	Gates® Mectrol®	CenterClean®	CC40
		Daisler®	REOclean®	AT40
08603	AMIGO-1000-TMPLT-08603	Ammeraal	Aeon	CD3BLSS
				Aeon-50
08710	AMIGO-1000-TMPLT-08710	Cog-veyor Systems Inc.	Cog-veyor	UBM
				UWM
				PBH PWH
08739	AMIGO-1000-TMPLT-08739	Beltservice Corporation	Magnethane™	PD1
08741	AMIGO-1000-TMPLT-08741			Flat w/Spikes
08776	AMIGO-1000-TMPLT-08776	Gates® Mectrol®	PosiLace™	PC20 CC40 FC12
		UBR	Hinge Lace	N/A
08788	AMIGO-1000-TMPLT-08788	Volta	DualDrive™	T25
				REO-T50 DB & SB & W
				FMW & FMB FHW & FHB
				FMB FHB FMB FHB
08847	AMIGO-1000-TMPLT-08847	Volta	Hinge Splice	M (2.5-5mmH)
08849	AMIGO-1000-TMPLT-08849	Ammeraal Beltech	Soliflex PRO/ Soliflex PRO mini	Soliflex TPU Soliflex TPE
08855	AMIGO-1000-TMPLT-08855	Mafdel	POSITIVEBELT	PO2-L
08856	AMIGO-1000-TMPLT-08856	Mafdel	DEL/DRIVE	DD50

Amigo™ Optional Accessories		
	Ordering Number	Item Code
Skiving Tool	RTBS Rough Top Skiver	03239
Replacement Blades for Amigo	AMIGO-1000-BLADES-5	08587
High – Low Temp Friction Tape for Flat Belts	AMIGO-FRICTIONTAPE-33X25	08604

Authorised Distributor:

236 Albert Amon Rd • Meadowdale Ext. 7 • Germiston 1614 • South Africa  
Tel: +27-11-608-4180 • Fax: +27-11-454-5821 • E-mail: flexco@flexco.co.za

Visit [www.flexco.com](http://www.flexco.com) for other Flexco locations and products.

©2021 Flexible Steel Lacing Company. Novitool® is a registered trademark. 09/15/21. For Reorder: X3807  
Intralox® and ThermoDrive® are registered trademarks of Lairtram L.L.C.

