

Engineered for Precision Belt Splicing

Splices in monolithic belting must ensure tight pitch tolerance and be free from pinhole air pockets. Everything about the Amigo[™] has been designed to do just that. And in typical Novitool[®] design, it was made to do it with ease, safety, and speed.

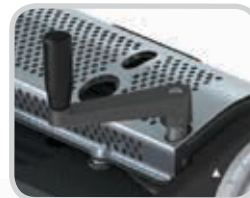
Custom templates secure the belt when cut to ensure accurate pitch control. Then the contactless heating process splices the belt in less than one minute and finishes with a controlled amount of clash. To ensure quality splices, pinholes are avoided through engineered solutions such as the pre-heat function to remove moisture from the belt ends; the shielded heat zone for consistent heating in various environmental conditions; and the contactless heating method. Accuracy, speed, and operator safety are fully integrated into the Amigo design making it an ideal splicing tool for in-shop or on-site splicing.



Integrated Belt Cutter
maintains accurate pitch
in a single pass



Contactless Heating
provides for a controlled
amount of clash without
actual contact with the
heat source



**Shielded Heat Zone and
Temperature Control**
ensures splice parameter
consistency regardless of
ambient temperatures



Operates on **Single Phase**
115V or 230V



**Interchangeable Splice
Templates** for precise pitch
splicing of belts from various
belt manufacturers



Digital Time Control with
quick, simple splice settings;
the **Pre-Heat Setting** can be
used to remove moisture and
avoid pinholes



Custom **Transport
Case** for easy storage
and transportation



Intertek
4003271
Cert. to CAN/CSA
Std. C22.2 No. 88



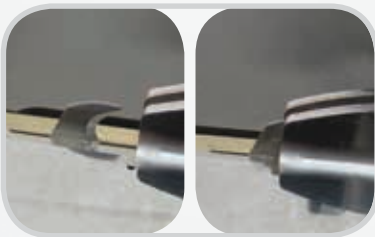
Intertek
4003271
Conforms to
IEC STD 60204-1
& EN STD 60204-1

*Patent Number: US 8,770,253 B2, other patents pending

Safety Features of the Amigo™



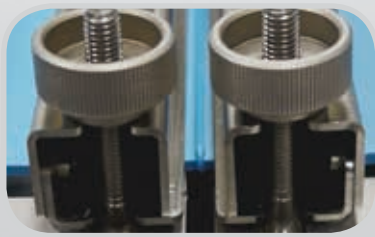
Integrated Cutter: Operator is protected from blade during single pass cutting operation.



Cutter Storage Position: Cutter must be in storage position for splicing function to operate.




Shielded Heat Zone: Guard must be closed for heat emitter to function. Operator is protected from heat source during splicing.



Cool Zone: Heater stows and cools inside unit as belt ends are butt-welded together.

NOVITOOL® AMIGO™ Splice Press for Monolithic Belts

Amigo™ Press and Cable Ordering Information			
	Ordering Number	Item Code	
Press			
1065 mm	AMIGO-1000-SPLICEPRESS	08545	
Cables			
230 volt; single phase; 16 amp	AMIGO-1000-CABLE-1-X230-CEE77	08707	

NOTE: Press, cable, and templates are all purchased separately.

Amigo™ Belt Template Ordering Information				
Item Code	Ordering Number	Belt Manufacturer	Belt Style	Belt Type
Templates				
08592	AMIGO-1000-TMPLT-08592	Volta	SuperDrive™	FMW & FMB FHW & FHB
08593	AMIGO-1000-TMPLT-08593	Intralox®	ThermoDrive®	8050 8026
08594	AMIGO-1000-TMPLT-08594	Habasit	Cleandrive™	CD.M50.S-UA.CB CD.M50.S-UA.WB CD.M25.S-UA.CB CD.M25.S-UA.WB
08595	AMIGO-1000-TMPLT-08595			Flat
08596	AMIGO-1000-TMPLT-08596	Gates® Mectrol®	PosiClean®	PC10 PC20
		UBR	1" Purclean 2" Purclean	PS2 PB3
08597	AMIGO-1000-TMPLT-08597	Gates® Mectrol®	CenterClean®	CC40
		UBR	Center Drive PurClean	CD3BLSS
08603	AMIGO-1000-TMPLT-08603	Ammeraal	Aeon	Aeon-50
08710	AMIGO-1000-TMPLT-08710	Cog-veyor Systems Inc.	Cog-veyor	UBM
				UWM
				PBH
08739	AMIGO-1000-TMPLT-08739	Beltservice Corporation	Magnethane™	PWH
08741	AMIGO-1000-TMPLT-08741			PD1
08776	AMIGO-1000-TMPLT-08776	Gates® Mectrol®	PosiLace™	Flat w/Spikes
				PC20
				CC40
				FC12
08788	AMIGO-1000-TMPLT-08788	Daisler®	REOclean®	REO-T50 DB
				REO-T50 SB
				REO-T50 W
		Volta	DualDrive™	REO-M25 DB
				FMW & FMB
				FHW & FHB
				FMB
				FHB
08796	AMIGO-1000-TMPLT-08796	Ammeraal Beltech	Soliflex Pro	N/A
08847	AMIGO-1000-TMPLT-08847	Volta	Hinge Splice	M (2.5-5mmH)

Amigo™ Optional Accessories		
	Ordering Number	Item Code
Skiving Tool	RTBS Rough Top Skiver	03239
Replacement Blades for Amigo	AMIGO-1000-BLADES-5	08587
High – Low Temp Friction Tape for Flat Belts	AMIGO-FRICTIONTAPE-33X25	08604

Amigo™ Dimension Information		
	Dimensions	Weight
Machine	1425 mm × 315 mm × 170 mm	38.5 kg
Transport Case (includes additional templates and support equipment)	1700 mm × 490 mm × 385 mm	36.3 kg
Total Weight		74.8 kg

Authorised Distributor:

Flexco Europe GmbH • Leidringer Strasse 40-42 • D-72348 Rosenfeld • Deutschland
Tel: +49-7428-9406-0 • Fax: +49-7428-9406-260 • E-mail: europe@flexco.com

Visit www.flexco.com for other Flexco locations and products.

©2019 Flexible Steel Lacing Company. Novitool® is a registered trademark. 02/06/19. For Reorder: X3740
Intralox® and ThermoDrive® are registered trademarks of Lairtram L.L.C.

